

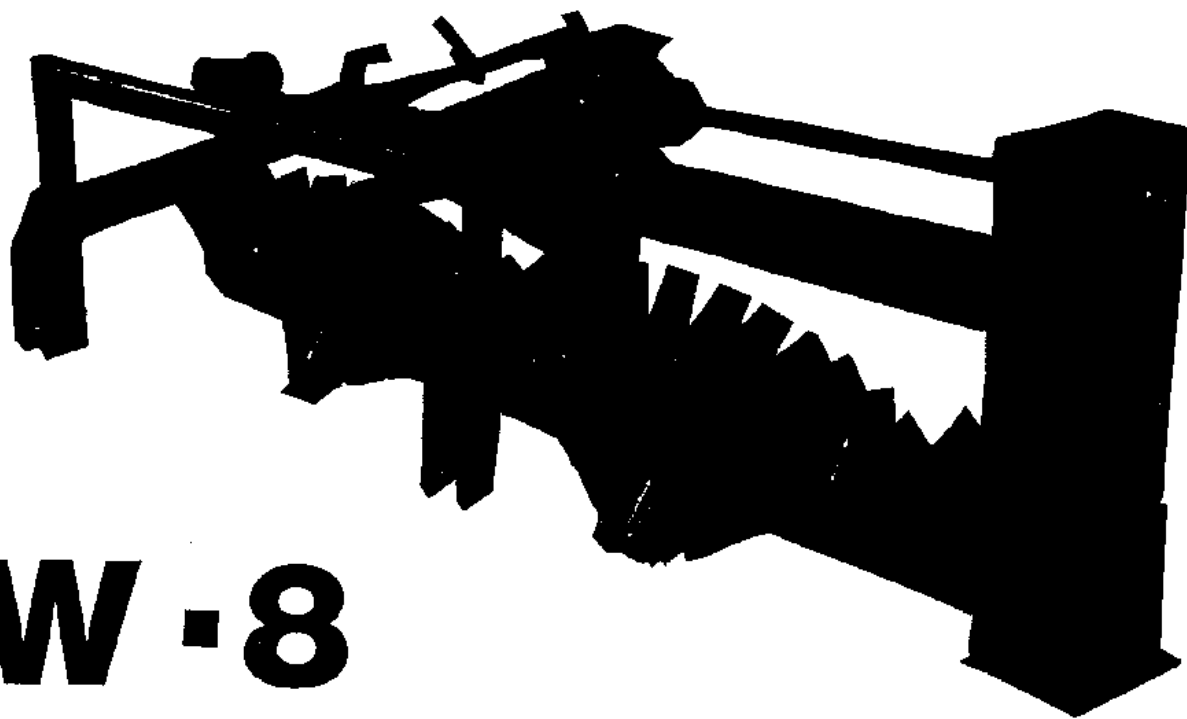


# ***ROCKMASTER***

**W-10**

## **Assembly-Operator Parts Manual**

# ROCK - MASTER



**W - 8**

**OPERATORS    MANUAL**

**HIGH-LINE** MFG.  
INC.  
**ROCK-MASTER PICKERS**



ROCK-MASTER A NEW NAME IN THE ROCK PICKING FIELD, IS MANUFACTURED BY HIGH-LINE MFG. INC. A COMPANY MANNED WITH A CREW WHICH HAS OVER 25 YEARS EXPERIENCE IN THE INDUSTRY.

THIS OPERATOR MANUAL HAS BEEN PREPARED TO PROVIDE INFORMATION NECESSARY FOR THE SAFE AND EFFICIENT OPERATION OF YOUR ROCK-MASTER PICKER. IN IT YOU WILL FIND SAFTY PROCEDURES, MAINTENANCE ROUTINES AND DETAILED PARTS DIAGRAMS.

IF YOU SHOULD FIND THAT YOU REQUIRE INFORMATION NOT COVERED IN THIS MANUAL, FEEL FREE TO CONSULT US OR YOUR LOCAL DEALER.

SHOULD THE NEED ARISE, THIS MANUAL WILL ASSIST YOU IN ACQUIRING REPLACEMENT PARTS. SHOULD YOUR DEALER NOT HAVE THE PARTS YOU REQUIRE IN STOCK, HE WILL BE HAPPY TO ORDER THEM FOR YOU.

THE ROCK-MASTER ROCK PICKER WAS DESIGNED TO WORK IN THE MOST DIFFICULT OF ROCK PICKING SITUATIONS. A LITTLE TIME AND EFFORT SPENT IN PROPER MAINTENANCE WILL INCREASE THE PERFORMANCE AND DURABILITY OF YOUR PICKER.

IN ORDER TO MAINTAIN HIGH EFFICIENCY STANDARDS, CHANGES OR IMPROVEMENTS ARE MADE FROM TIME TO TIME. HIGH-LINE MFG. INC. RESERVES THE RIGHT TO MAKE THOSE CHANGES AND ADD IMPROVMENTS WHEN PRACTICAL TO DO SO WITHOUT INCURRING ANY OBLIGATION TO MAKE SUCH CHANGES AND IMPROVEMENTS ON MACHINES SOLD PREVIOUSLY.

HIGH-LINE MFG. INC. THANKS AND CONGRATULATES YOU FOR SELECTING A ROCK-MASTER ROCK PICKER AS THE MACHINE OF YOUR CHOICE.

RAYMOND BUSSIERE  
PRESIDENT

P.O BOX 307 VONDA, SASKATCHEWAN SOK 4N0  
PHONE 1-800-665-2010 FAX (306) 258-2010

## TABLE OF CONTENTS

PRESIDENTS MESSAGE.....	1
TABLE OF CONTENTS.....	2
SCOPE.....	3
WARRANTY.....	4
DRUM DRIVE.....	5
MAIN VIEW.....	6
CHAIN TIGHTENER.....	7
GEARBOX.....	8
M4559 PTO SHAFT.....	9
6000 CLUTCH.....	11
CLUTCH OPERATING & MAINTENANCE.....	12
CASTOR & ARM ASSY.....	13
HD211 HUB.....	14
MAINTENANCE & SPECS.....	15

YOUR MODEL W-8 ROCK-MASTER ROCK RAKE WAS DESIGNED FOR EASE OF HANDLING IN THE TOUGHEST OF CONDITIONS.

THE W-8 WILL CLEAN YOUR FIELDS OF SMALL AND LARGE STONES FAST AND WITH THE GREATEST OF EASE.

THE ROCK-MASTER STONE RAKE IS NOT A LUXURY, IT IS A SOUND ADDITION TO YOUR FARMING OPERATION.

MANY ACRES OF TROUBLE FREE SERVICE CAN BE EXPECTED WITH A LITTLE INSIGHT AND PROPER MAINTENANCE DESCRIBED IN THIS MANUAL.

DIAGRAMS AND PARTS LISTS HAVE BEEN INCLUDED FOR YOUR CONVENIENCE TO ASSIST IN THE ADJUSTMENTS AND UPKEEP THAT MAY BE REQUIRED.

- ALWAYS DISENGAGE PTO BEFORE DISMOUNTING TRACTOR
- DO NOT OPERATE UNLESS PTO GUARDS ARE IN PLACE
- PTO GUARDS MUST TURN FREELY AND BE PROPERLY ATTACHED AND MAINTAINED
- PTO SHAFTS MUST BE SECURELY LOCKED ONTO TRACTOR AND IMPLEMENT SHAFTS
- KEEP YOURSELF AND OTHERS CLEAR OF ROTATING PARTS TO PREVENT INJURY
- READ ALL SAFETY "NOTES"
- PAY ATTENTION TO ALL "WARNING & SAFETY" DECALS
- ABOVE ALL "BE CAREFUL"

# WARRANTY

HIGH-LINE MFG. INC. WARRANTS ITS PRODUCTS TO THE ORIGINAL OWNER FOR A PERIOD OF TWO YEARS FROM DATE OF PURCHASE. SUBJECT TO THE FOLLOWING PROVISIONS.

\*1ST YEAR - PARTS & LABOUR

\*2ND YEAR - PARTS ONLY

\*ALL MATTERS RELATED WITH THE WARRANTY OF PRODUCTS MUST BE HANDLED THROUGH AN AUTHORIZED ROCK-MASTER DEALER.

\*ANY LABOUR SUBJECT TO WARRANTY MUST BE AUTHORIZED BY A HIGH- LINE MFG. INC. REPRESENTATIVE, BEFORE WORK IS STARTED.

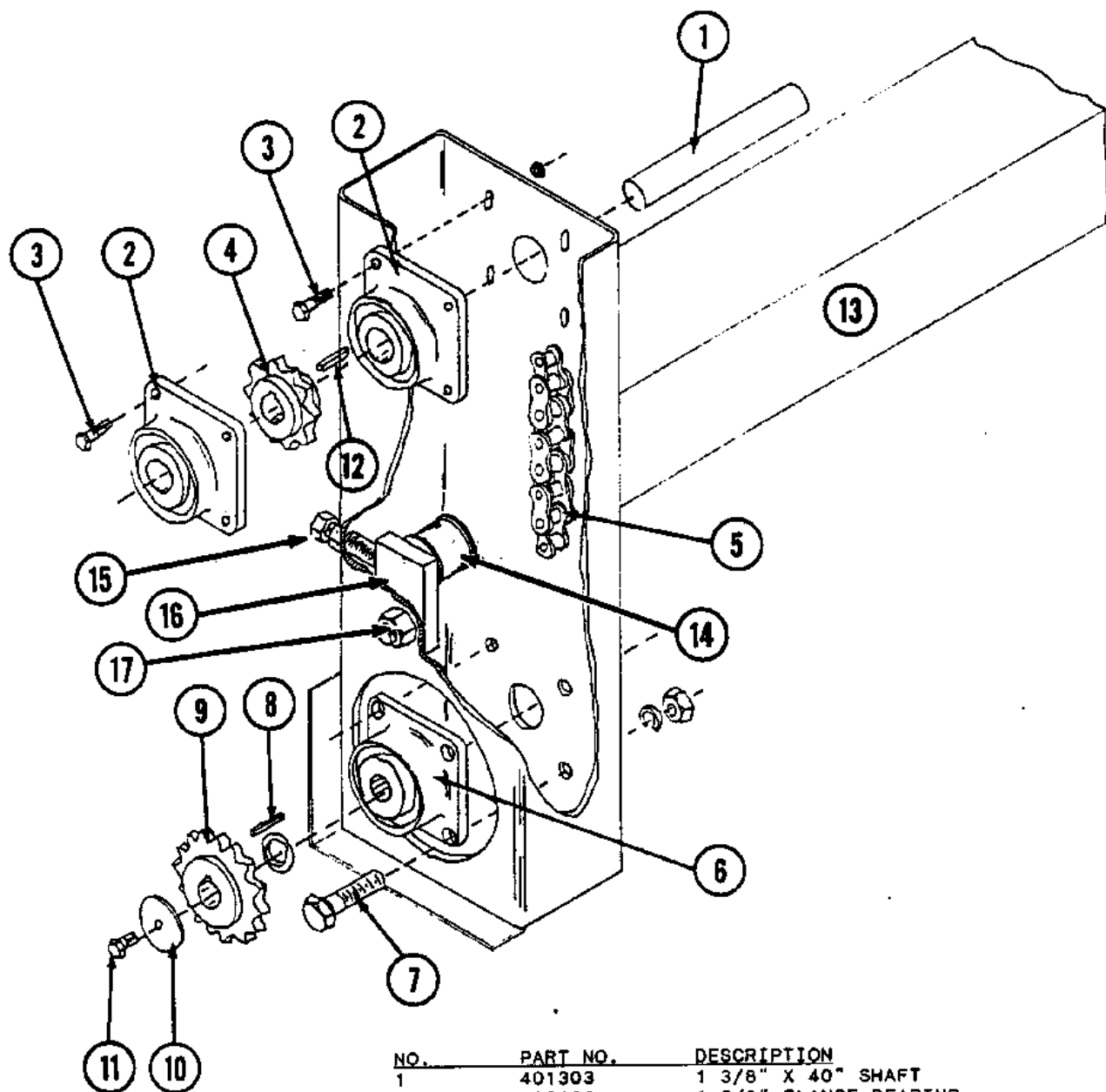
\*MACHINES USED FOR RENTAL, CUSTOM WORK OR INDUSTRIAL, CONSTRUCTION USE, WILL BE WARRANTED FOR A PERIOD OF 60 DAYS FROM DATE OF PURCHASE. (PARTS AND LABOUR)

\*WARRANTY WILL BE VOID IF ANY COMPONENT OF THE ROCK-PICKER IS ALTERED OR MODIFIED IN ANY WAY, UNLESS WRITTEN PERMISSION IS GIVEN BY HIGH-LINE MFG. INC.

\*HIGH-LINE MFG. INC. WILL NOT ASSUME ANY RESPONSIBILITY FOR WHATEVER DAMAGE MAY OCCUR TO EQUIPMENT TO WHICH THE ROCK-PICKER MAY BE ATTACHED.

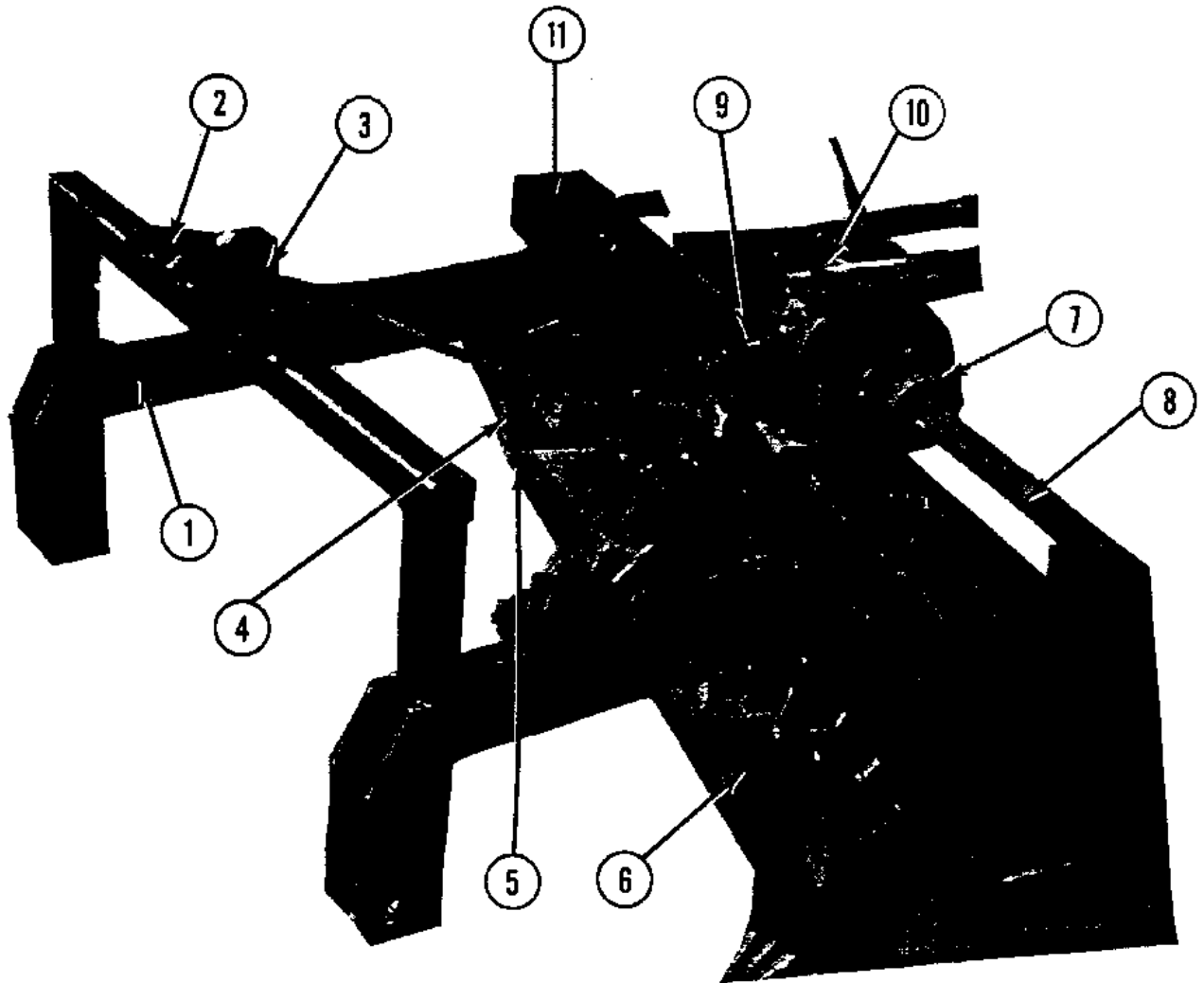
\*WARRANTY TERMS AND CONDITIONS ARE SUBJECT TO PROVINCIAL AND STATE LEGISLATION.

# ROCK-MASTER



NO.	PART NO.	DESCRIPTION
1	401303	1 3/8" X 40" SHAFT
2	400106	1 3/8" FLANGE BEARING
3	B5C0840P	1/2 X 2 1/2 UNC GR5 PLTD
	LW08P	1/2" LOCK WASHER PLTD
	NC08P	1/2" UNC NUT PLTD
4	701010	100C9 SPROCKET
5	702004	#100 CHAIN X 46 1/2 LINKS
6	400103	2" FLANGE BEARING
7	B5C1032	5/8 X 2 UNC GR5
	LW10	5/8" LOCK WASHER
	NC10P	5/8" UNC NUT PLTD
8	801605	1/2" X 2" KEY
9	701006	100C14 SPROCKET
10	801302	1/2" X 3 1/8" WASHER
11	B5C0816	1/2 X 1 UNC GR5
	LW08P	1/2" LOCK WASHER PLTD
12	801603	5/16" X 2 1/2" KEY
13	501801	DRUM FRAME
14	400101	2" NYLON IDLER
15	NC12P	3/4" UNC NUT
16	400102	IDLER BRACKET
17	NC20P	1 1/4" UNC NUT

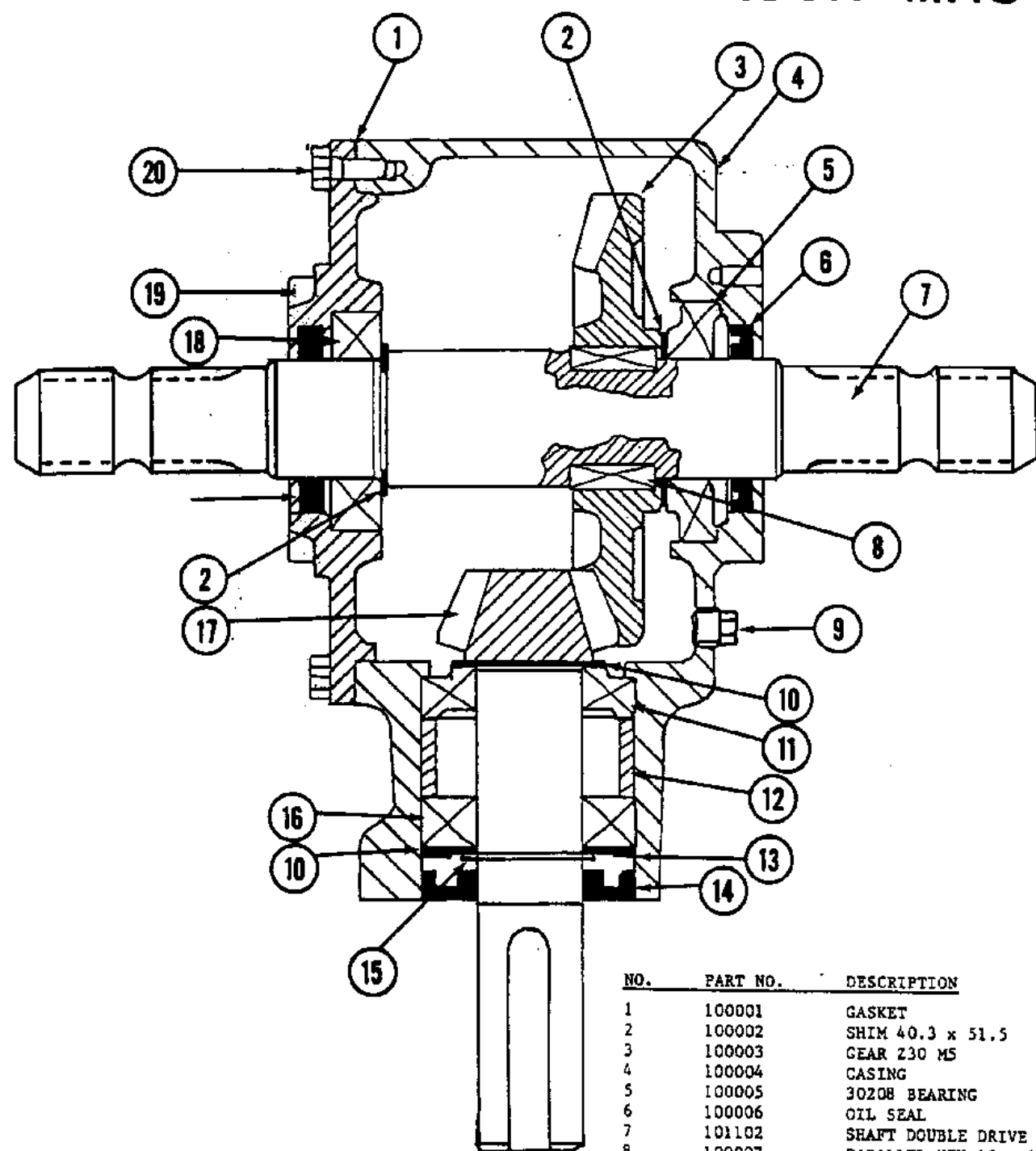
# ROCK-MASTER



NO.	PART NO.	DESCRIPTION
1	501802	HITCH
2	501803	HOOK UP PLATE
3	801210	1" X 2" PIN
4	801207	2" X 17 3/4" SHAFT
5	B5C0856	1/2 X 3 1/2 UNC GR5
	LW08P	1/2" LOCK WASHER PLTD
	NC08P	1/2" UNC NUT PLTD
6	401302	DRUM COMPLETE
	400105	DRUM TOOTH
7	701012	SHAFT COUPLER KEY-SPLINE
	702009	COUPLER JOINING CHAIN
	701013	KEYED HALF ONLY
	701014	SPLINED HALF ONLY
8	401303	1 3/8" X 40" SHAFT
9	101101	GEARBOX
10	B12MM30MM	M12 X 30MM BOLT
11	501801	DRUM FRAME



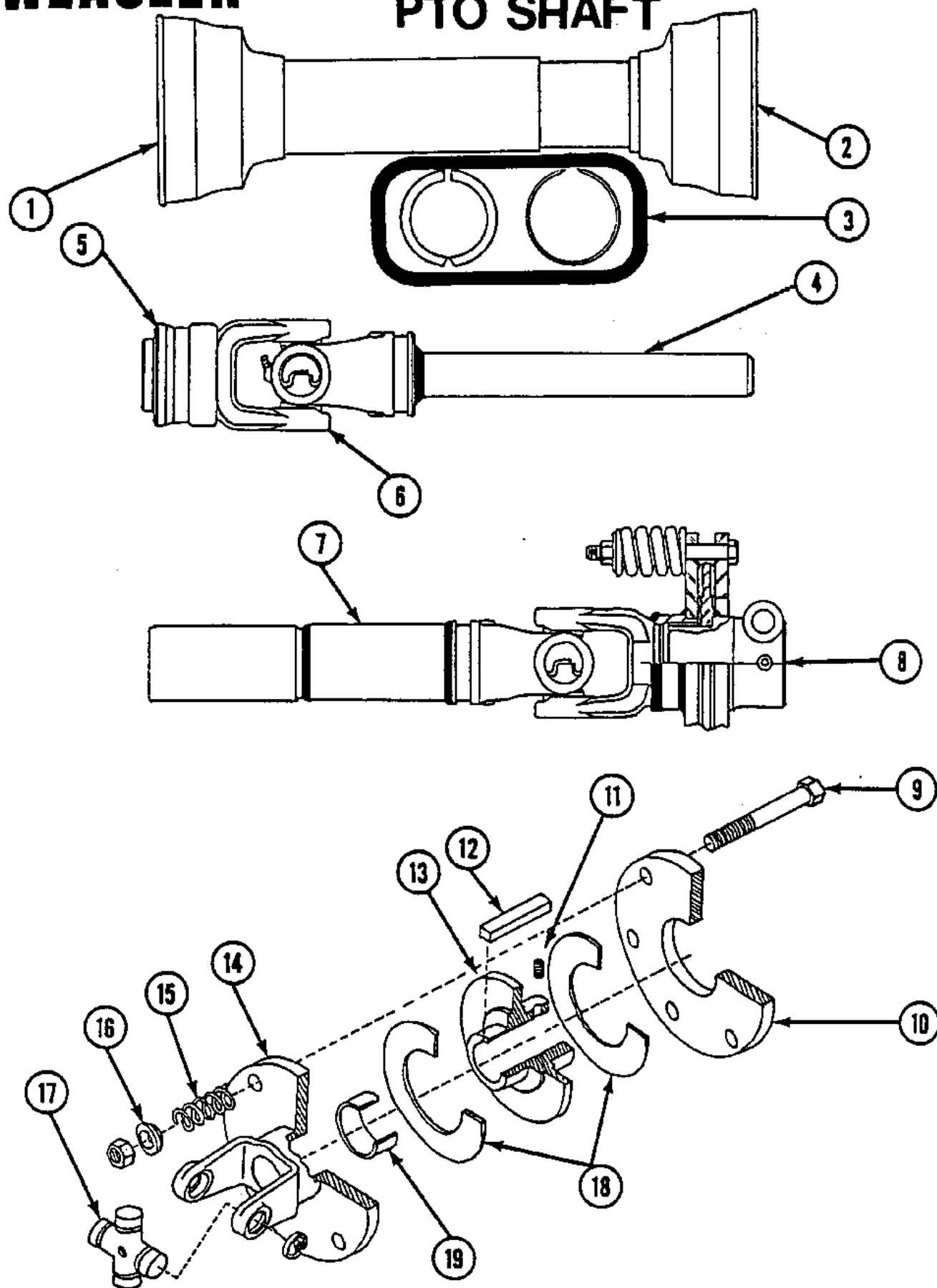
# ROCK-MASTER



NO.	PART NO.	DESCRIPTION
1	100001	GASKET
2	100002	SHIM 40.3 x 51.5
3	100003	GEAR 230 M5
4	100004	CASING
5	100005	30208 BEARING
6	100006	OIL SEAL
7	101102	SHAFT DOUBLE DRIVE SPLINED
8	100007	PARALLEL KEY 10 x 8 x 30
9	100008	W' PLUG
10	100009	SHIM 35.3"x 48
11	100010	30207 BEARING
12	100011	SPACER
13	100012	SNAP RING 72 UN17437
14	100013	OIL SEAL
15	100014	SNAP RING 35 IN17435
16	100015	6207 BEARING
17	100016	PINION GEAR 210 M5
18	101103	6208 BEARING
19	101104	DOUBLE DRIVE COVER
20	101018	BOLT M8 x 20 8.8
	101101	DOUBLE DRIVE GEAR BOX COMPLETE

# WEASLER

## PTO SHAFT



NO. PART NO. DESCRIPTION

1	901010	OUTER GUARD
2	901011	INNER GUARD
3	901012	GUARD RETAINER KIT
4	901004	YOKE & SHAFT
5	901013	SPRING-LOK YOKE REPAIR KIT
6	901002	TRACTOR YOKE
7	901005	YOKE & TUBE
8	901016	6000 CLUTCH ONLY COMPLETE
9	901008	6000 CLUTCH BOLT W/NUT
10	900002	CLUTCH PRESSURE PLATE
11	801501	3/8-16 SET SCREW
12	801602	5/16 X 2 KEY
13	900001	CLUTCH HUB
14	901006	YOKE W/CLUTCH PLATE
15	901007	6000 CLUTCH SPRING
16	901009	6000 CLUTCH SPRING HOLDING WASHER
17	901003	14R JOURNAL KIT
18	900003	CLUTCH FRICTION DISC
19	900004	BRASS BUSHING
20	901014	TRACTOR HALF PTO SHAFT W/GUARD
21	901015	CLUTCH HALF PTO SHAFT W/GUARD

901001 M4559 PTO COMPLETE

## "6000 CLUTCH"

### OPERATING AND MAINTENANCE INSTRUCTIONS.

1) ATMOSPHERIC CONDITIONS AND PROLONGED STORAGE MAY ALTER THE OPERATING CHARACTERISTICS OF FRICTION CLUTCHES. BEFORE FIRST USE OR AFTER STORAGE OF MORE THAN ONE MONTH ALL SPRING ADJUSTING NUTS SHOULD BE BACKED OFF UNTIL SPRINGS ARE LOOSE, THEN TIGHTENED ONE TURN.

2) THE CLUTCH SHOULD THEN BE SLIPPED UNTIL IT STARTS TO SMOKE. THE SPRINGS SHOULD THEN BE SET TO THE DESIRED SPRING SETTING, SET ALL SPRINGS TO THE SAME LENGTH.

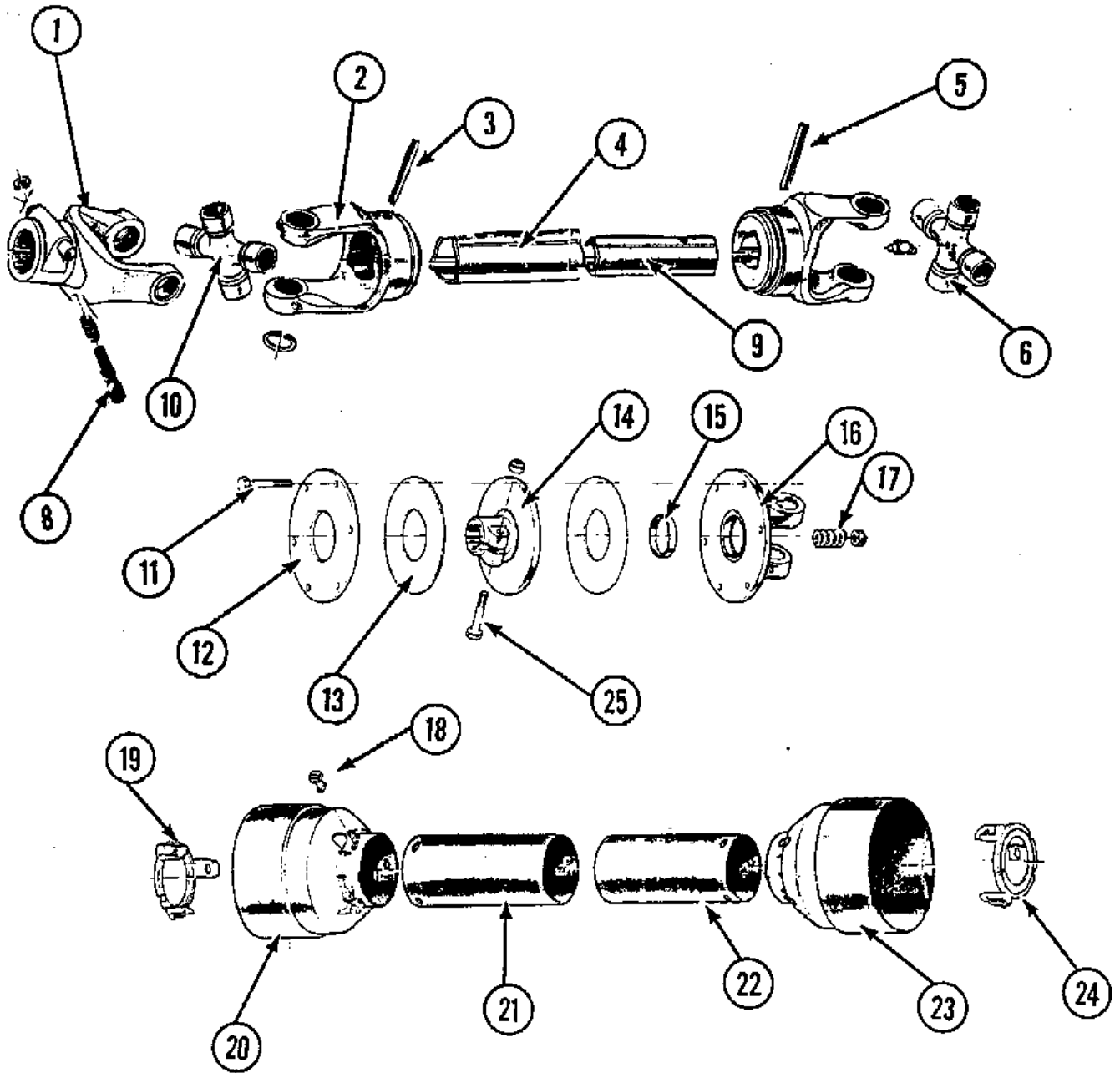
NOTE: THAT AFTER A CLUTCH HAS BEEN "RUN IN" IT WILL SLIP ABOUT 20% HIGHER THAN BEFORE.

3) THE TEMPERATURE OF THE CLUTCH SHOULD BE CHECKED OFTEN DURING THE FIRST 20 MIN. OF OPERATION AND ABOUT EVERY 8 HRS. THEREAFTER. IF THE CLUTCH SMOKES, OR IS TOO HOT TO TOUCH (140 DEG.F. APPROX. DON'T BURN YOURSELF), THE SPRINGS SHOULD BE TIGHTENED OR THE CLUTCH WILL BURN UP AND FAIL.

4) SOME CLUTCHES MAY HAVE A SPRING STOP INSIDE THE SPRING TO PREVENT TIGHTENING THE SPRING BEYOND A PRESET LENGTH.

CAUTION!! INJURY MAY RESULT IF SPRING IS TIGHTENED BEYOND PRESET LENGTH.

# EG 60 SERIES



**PTO PARTS**

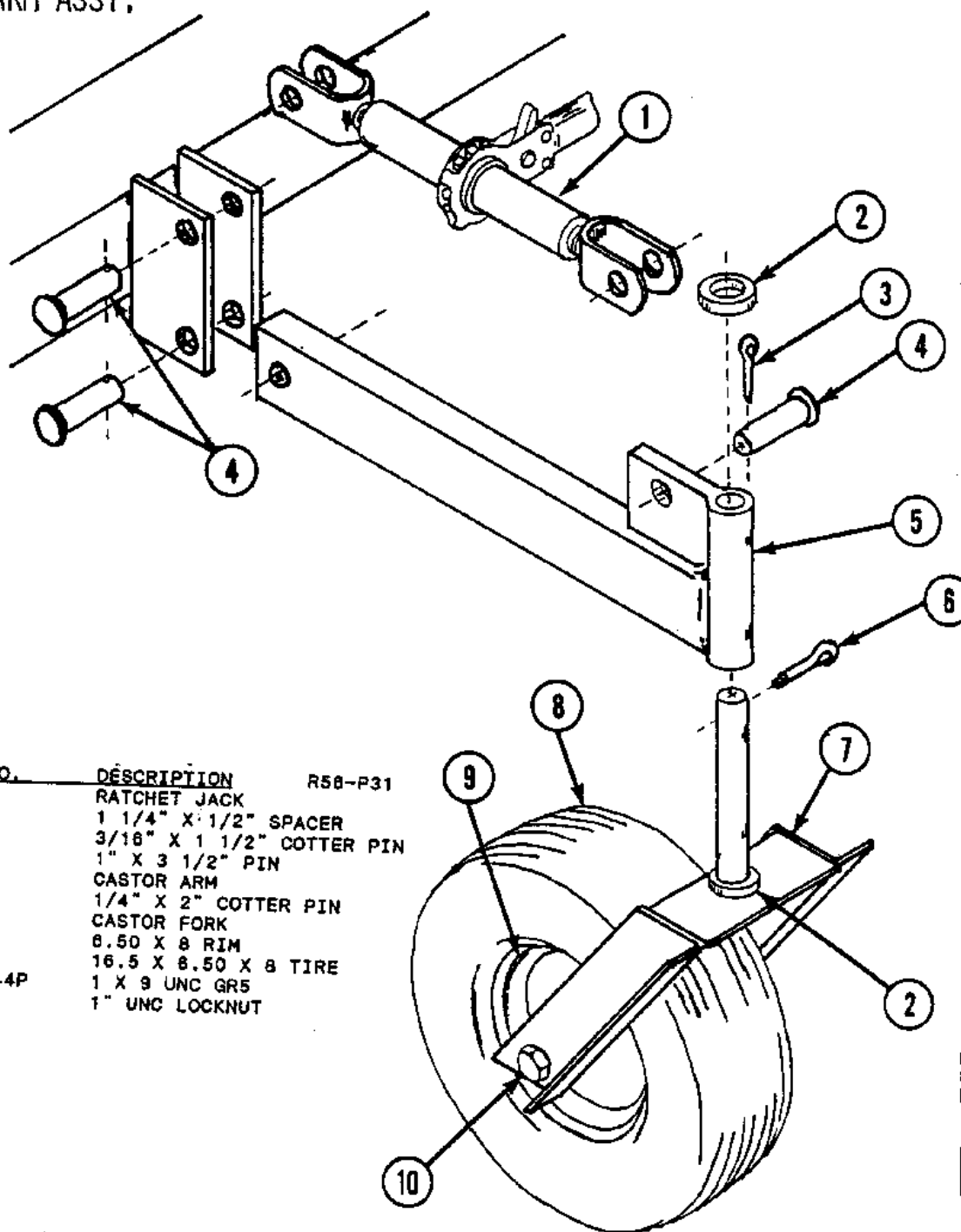
# ROCKMASTER

## EG 60 SERIES

NO.	PART NO.	DESCRIPTION
1	901117	1 3/8 - 6 YOKE
2	901119	OUTER TUBE YOKE
3	901120	ROLL PIN OUTER YOKE
4	901121	OUTER TUBE
5	901124	ROLL PIN
6	901118	CROSS KIT
8	901123	PUSH PIN KIT
9	901122	INNER TUBE
10	901118	CROSS KIT
11	901031	SPRING BOLT (M10 X 80)
12	901132	PRESSURE PLATE
13	901127	CLUTCH FACING
14	901144	CLUTCH SUPPORT
15	901133	BUSHING
16	901134	FLANGED YOKE
17	901126	CLUTCH SPRING
18	901137	CONE RETAINING BOLT
19	901136	OUTER TUBE RETAINING COLLAR
20	901138	OUTER TUBE CONE
21	901139	OUTER SHIELD TUBE
22	901140	INNER SHIELD TUBE
23	901142	INNER TUBE CLUTCH CONE
24	901143	INNER TUBE RETAINING COLLAR
25	901034	M12 X 65 BOLT
	901131	EG 60 SERIES PTO COMPLETE

# ROCK-MASTER

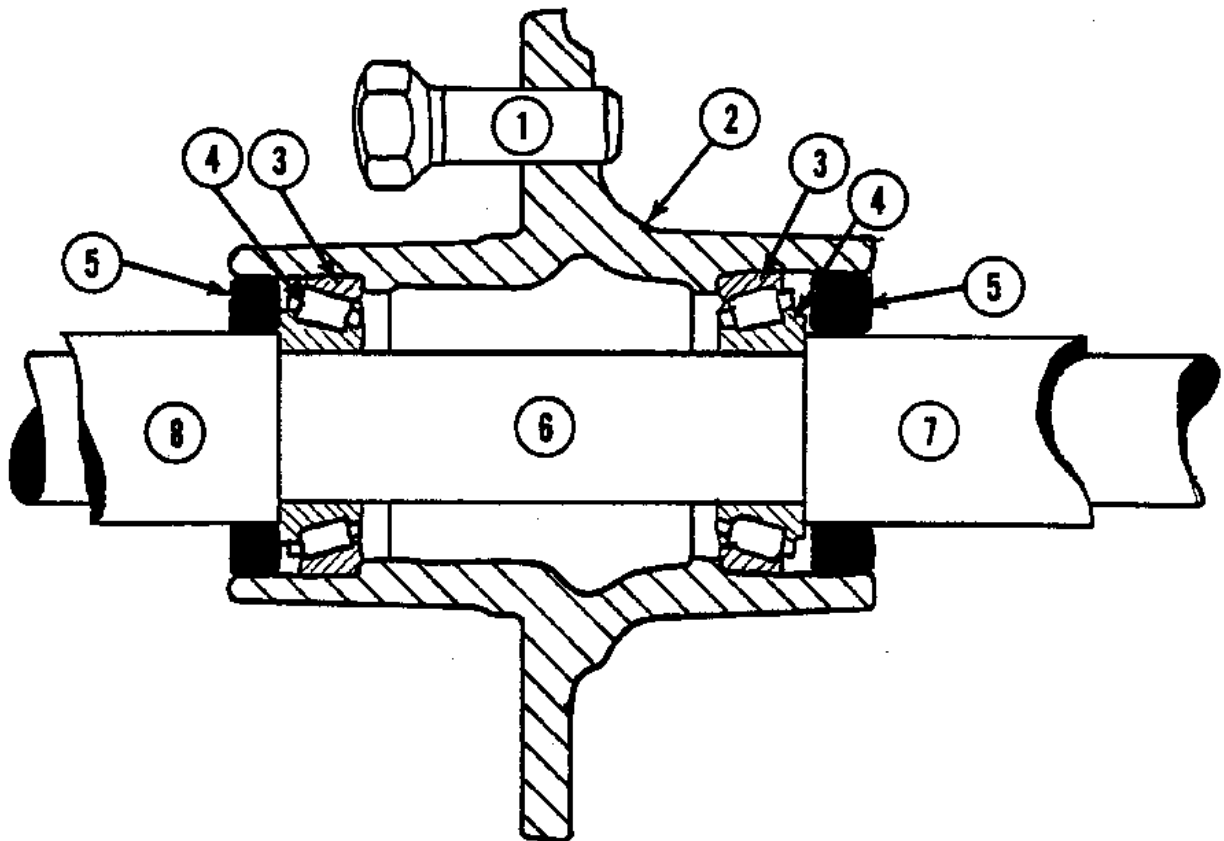
## CASTOR & ARM ASSY.



NO.	PART NO.	DESCRIPTION	R58-P31
1	500005	RATCHET JACK	
2	801304	1 1/4" X 1/2" SPACER	
3	801402	3/16" X 1 1/2" COTTER PIN	
4	801201	1" X 3 1/2" PIN	
5	500006	CASTOR ARM	
6	CP0432	1/4" X 2" COTTER PIN	
7	500007	CASTOR FORK	
8	301201	6.50 X 8 RIM	
9	301202	16.5 X 6.50 X 8 TIRE	
10	B5C16144P	1 X 9 UNC GR5	
	LNC16	1" UNC LOCKNUT	

# ROCK-MASTER

## 4-BOLT HD211



NO.	PART NO.	DESCRIPTION	R56-P15
1	301204	1/2" WHEEL BOLT	
2	301203	HD211 WHEEL HUB	
3	301205	L44610 RACE	
4	301206	L44643 BEARING	
5	301207	SE10 SEAL	
6	B5C16144P	1 X 9 UNC GR5 PLTD	
	LNC16	1" UNC LOCK NUT	
7	301208	1" I.D. X 2" L SPACER	
8	301209	1" I.D. X 1 1/2" SPACER	



## ROUTINE MAINTENANCE

- PERIODICALLY CHECK AIR PRESSURE IN TIRES AS UNEQUAL PRESSURE WOULD MAKE IT PRACTICALLY IMPOSSIBLE TO LEVEL MACHINE PROPERLY.
- CHECK OIL IN GEAR BOX AND ADD #90 GEAR OIL IF NEEDED.
- CHECK WHEEL BOLTS FOR TIGHTNESS.
- CHECK ALL BOLTS FOR TIGHTNESS.
- CHECK HYD. HOSE AND TUBING CONNECTIONS.
- GREASE TELESCOPIC SHAFT REGULARLY TO MINIMIZE TRUST FORCES.
- CHECK CHAIN TIGHTENER.
- TIGHTEN ALL SET SCREWS.

## SPECIFICATIONS

TIRES.....16.5 x 6.50 x 8  
CHAIN & SPROCKETS.....#100  
PTO DRIVE.....540 STD.  
WEIGHT.....1200 LBS.

## DANGER

ANY PETOLEUM PRODUCT UNDER PRESSURE CAN INFILTRATE THE SKIN CAUSING SERIOUS AFTER EFFECTS. IF THIS SHOULD HAPPEN, APPLY COLD PACKS TO THE AFFECTED AREA AND SEE A DOCTOR IMMEDIATELY.