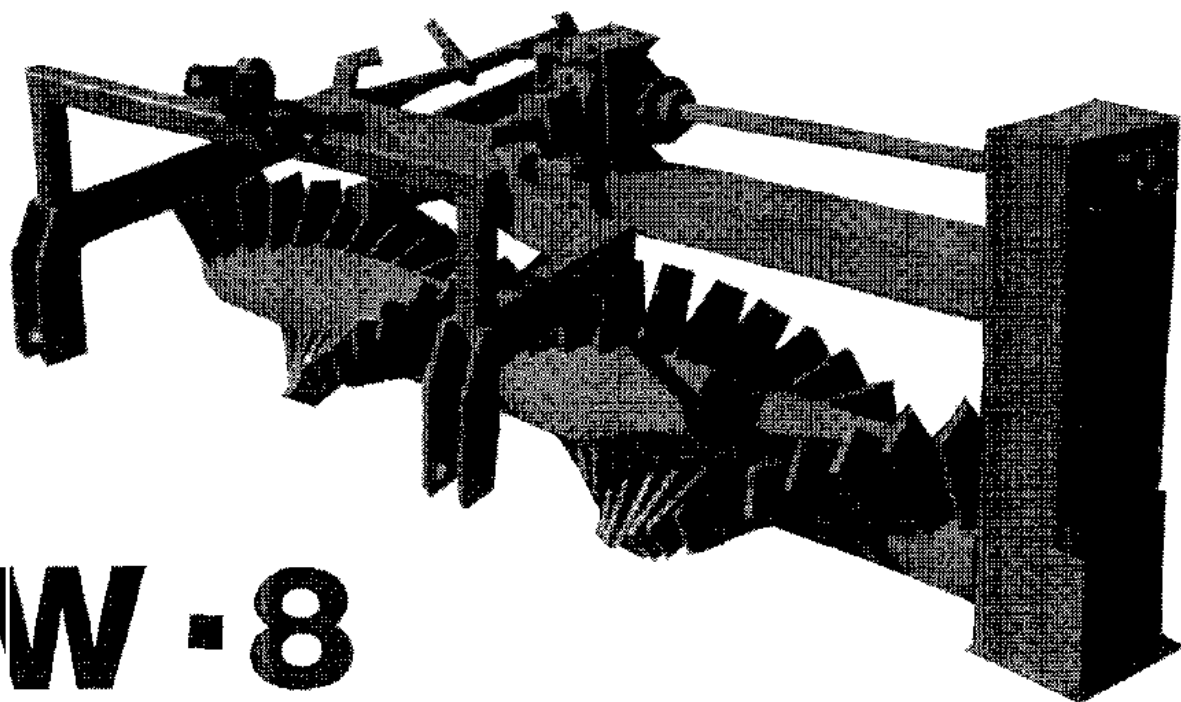


# ROCK - MASTER



**W - 8**

**OPERATORS    MANUAL**

**HIGH-LINE** MFG. INC.  
**ROCK-MASTER PICKERS**

# **HIGH-LINE MFG. INC.**

---

## **ROCK-MASTER PICKERS**

---

ROCK-MASTER A NEW NAME IN THE ROCK PICKING FIELD, IS MANUFACTURED BY HIGH-LINE MFG. INC. A COMPANY MANNED WITH A CREW WHICH HAS OVER 25 YEARS EXPERIENCE IN THE INDUSTRY.

THIS OPERATOR MANUAL HAS BEEN PREPARED TO PROVIDE INFORMATION NECESSARY FOR THE SAFE AND EFFICIENT OPERATION OF YOUR ROCK-MASTER PICKER. IN IT YOU WILL FIND SAFETY PROCEDURES, MAINTENANCE ROUTINES AND DETAILED PARTS DIAGRAMS.

IF YOU SHOULD FIND THAT YOU REQUIRE INFORMATION NOT COVERED IN THIS MANUAL, FEEL FREE TO CONSULT US OR YOUR LOCAL DEALER.

SHOULD THE NEED ARISE, THIS MANUAL WILL ASSIST YOU IN ACQUIRING REPLACEMENT PARTS. SHOULD YOUR DEALER NOT HAVE THE PARTS YOU REQUIRE IN STOCK, HE WILL BE HAPPY TO ORDER THEM FOR YOU.

THE ROCK-MASTER ROCK PICKER WAS DESIGNED TO WORK IN THE MOST DIFFICULT OF ROCK PICKING SITUATIONS. A LITTLE TIME AND EFFORT SPENT IN PROPER MAINTENANCE WILL INCREASE THE PERFORMANCE AND DURABILITY OF YOUR PICKER.

IN ORDER TO MAINTAIN HIGH EFFICIENCY STANDARDS, CHANGES OR IMPROVMENTS ARE MADE FROM TIME TO TIME. HIGH-LINE MFG. INC. RESERVES THE RIGHT TO MAKE THOSE CHANGES AND ADD IMPROVMENTS WHEN PRACTICAL TO DO SO WITHOUT INCURRING ANY OBLIGATION TO MAKE SUCH CHANGES AND IMPROVEMENTS ON MACHINES SOLD PREVIOUSLY.

HIGH-LINE MFG. INC. THANK YOU AND CONGRATULATE YOU FOR DELECTING A ROCK-MASTER ROCK PICKER AS THE MACHINE OF YOUR CHOICE.

RAYMOND BUSSIÈRE  
PRESIDENT

## TABLE OF CONTENTS

PRESIDENTS MESSAGE.....	1
TABLE OF CONTENTS.....	2
SCOPE.....	3
WARRANTY.....	4
DRUM DRIVE.....	5
MAIN VIEW.....	6
CHAIN TIGHTENER.....	7
GEARBOX.....	8
M4559 PTO SHAFT.....	9
6000 CLUTCH.....	11
CLUTCH OPERATING & MAINTENANCE.....	12
CASTOR & ARM ASSY.....	13
HD211 HUB.....	14
MAINTENANCE & SPECS.....	15

YOUR MODEL M-8 ROCK-MASTER ROCK RAKE WAS DESIGNED FOR EASE OF HANDLING IN THE TOUGHEST OF CONDITIONS.

THE M-8 WILL CLEAN YOUR FIELDS OF SMALL AND LARGE STONES FAST AND WITH THE GREATEST OF EASE.

THE ROCK-MASTER STONE RAKE IS NOT A LUXURY, IT IS A SOUND ADDITION TO YOUR FARMING OPERATION.

MANY ACRES OF TROUBLE FREE SERVICE CAN BE EXPECTED WITH A LITTLE INSIGHT AND PROPER MAINTENANCE DESCRIBED IN THIS MANUAL.

DIAGRAMS AND PARTS LISTS HAVE BEEN INCLUDED FOR YOUR CONVENIENCE TO ASSIST IN THE ADJUSTMENTS AND UPKEEP THAT MAY BE REQUIRED.

- ALWAYS DISENGAGE PTO BEFORE DISMOUNTING TRACTOR
- DO NOT OPERATE UNLESS PTO GUARDS ARE IN PLACE
- PTO GUARDS MUST TURN FREELY AND BE PROPERLY ATTACHED AND MAINTAINED
- PTO SHAFTS MUST BE SECURELY LOCKED ONTO TRACTOR AND IMPLEMENT SHAFTS
- KEEP YOURSELF AND OTHERS CLEAR OF ROTATING PARTS TO PREVENT INJURY
- READ ALL SAFETY "NOTES"
- PAY ATTENTION TO ALL "WARNING & SAFETY" DECALS
- ABOVE ALL "BE CAREFUL"

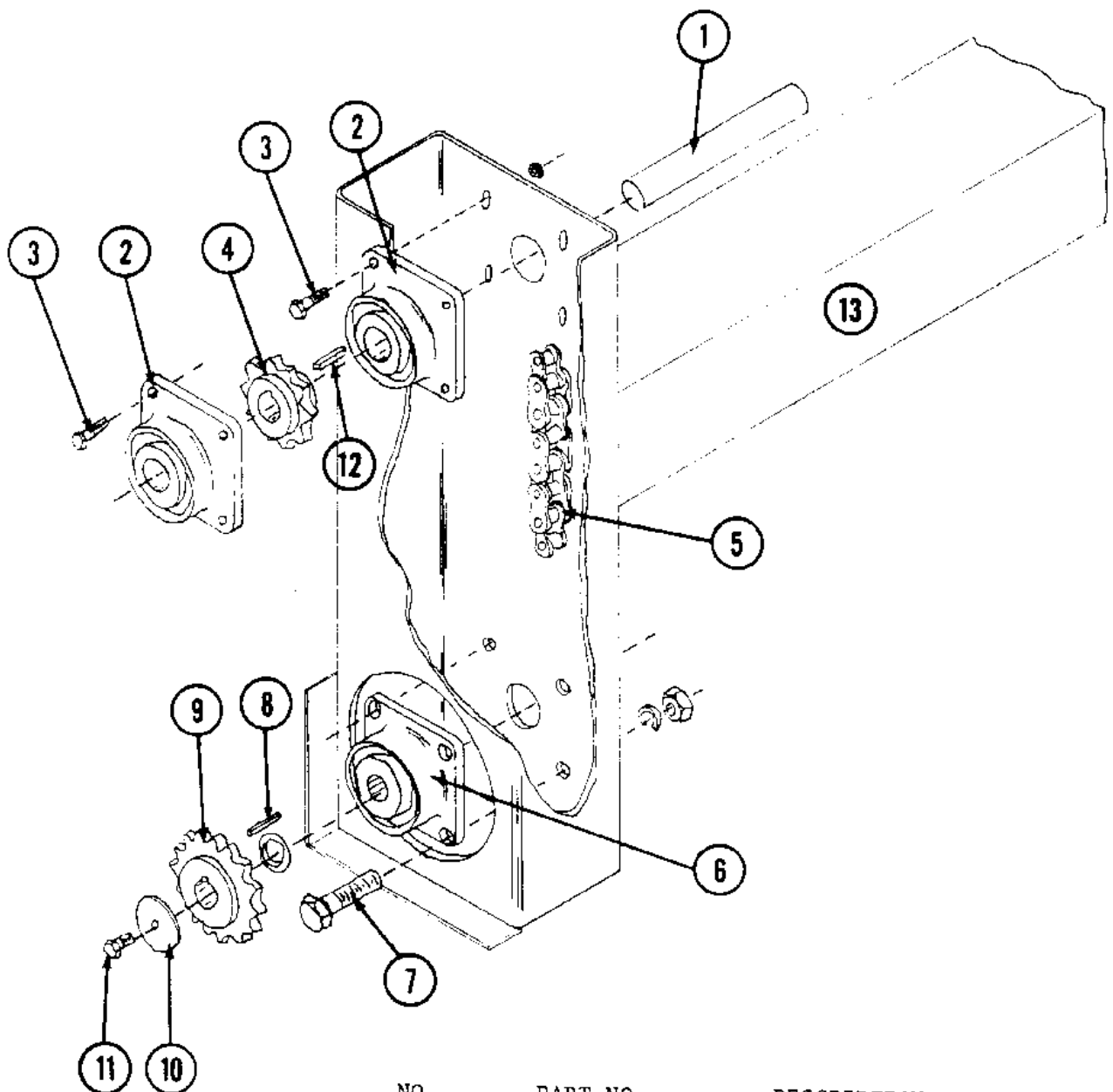
# WARRANTY

HIGH-LINE MFG. INC. warrants its products to the original owner for a period of two years from date of purchase. Subject to the following provisions.

- \*1st YEAR - PARTS & LABOUR
- \*2nd YEAR - PARTS ONLY

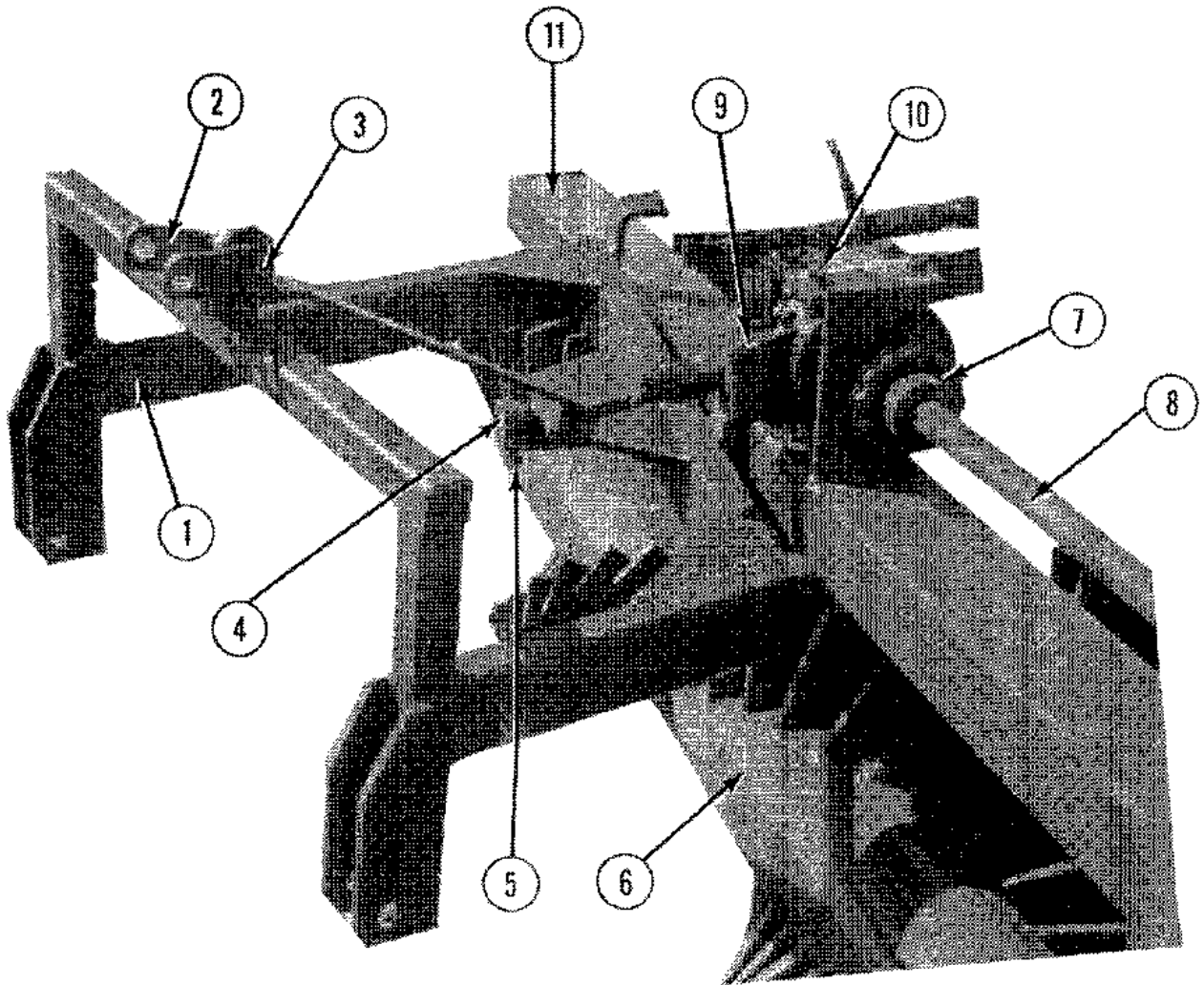
- \*All matters related with the warranty of products must be handled through an authorized ROCK-MASTER dealer.
- \*Any labour subject to warranty must be authorized by a HIGH-LINE MFG. INC. representative, before work is started.
- \*Machines used for rental, custom work or industrial/construction use, will be warranted for a period of 6 months from date of purchase. Parts & labour.
- \*Warranty will be void if any component of rock-picker is altered or modified in any way, unless written permission is given by HIGH-LINE MFG. INC.
- \*HIGH-LINE MFG. INC. will not assume any responsibility for whatever damage may occur to equipment to which the rock-picker may be attached.
- \*Warranty terms and conditions are subject to provincial and state legislation.

# ROCK-MASTER

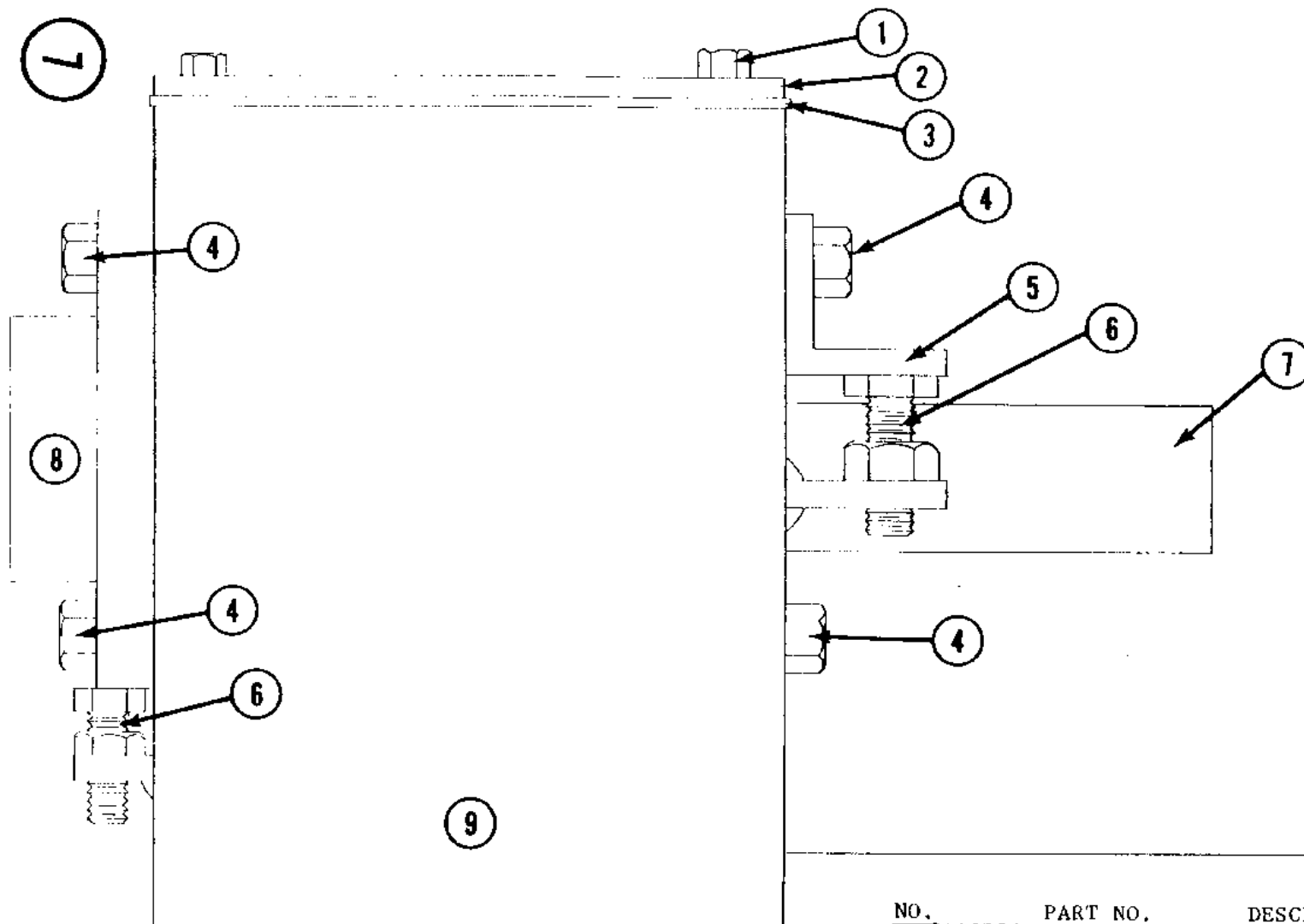


NO.	PART NO.	DESCRIPTION
1	401303	1 3/8" x 40" SHAFT
2	400106	1 3/8" FLANGE BEARING COMPLETE
3	801017	1/2" x 2 1/2" BOLT UNC W/NUT
4	701010	100C9 SPROCKET
5	702004	#100 CHAIN x 46 1/2 LINKS
6	400103	2" FLANGE BEARING COMPLETE
7	801106	5/8" x 2" UNF BOLT W/NUT
8	801605	1/2" x 2" KEY
9	701006	100C14 SPROCKET
10	801302	1/2" x 3 1/8 WASHER
11	801002	1/2" x 1" BOLT
12	801603	5/16" x 2 1/2" KEY
13	501801	DRUM FRAME

# ROCK-MASTER



NO.	PART NO.	DESCRIPTION
1	501802	HITCH
2	501803	HOOKE UP PLATES (set of 2)
3	801210	1" x 2" PIN
4	801207	2" x 17 3/4" SHAFT
5	801021	3/8" x 3 1/2" UNC BOLT W/NUT
6	401302	DRUM
	400105	DRUM TOOTH
7	701012	SHAFT COUPLER KEY TO SPLINE
	702009	COUPLER JOINING CHAIN
	701013	KEYED HALF ONLY
	701014	SPLINED HALF ONLY
8	401303	1 3/8" x 40" SHAFT
9	101101	GEARBOX
10	801023	M12 x 30 BOLT
11	501801	DRUM FRAME

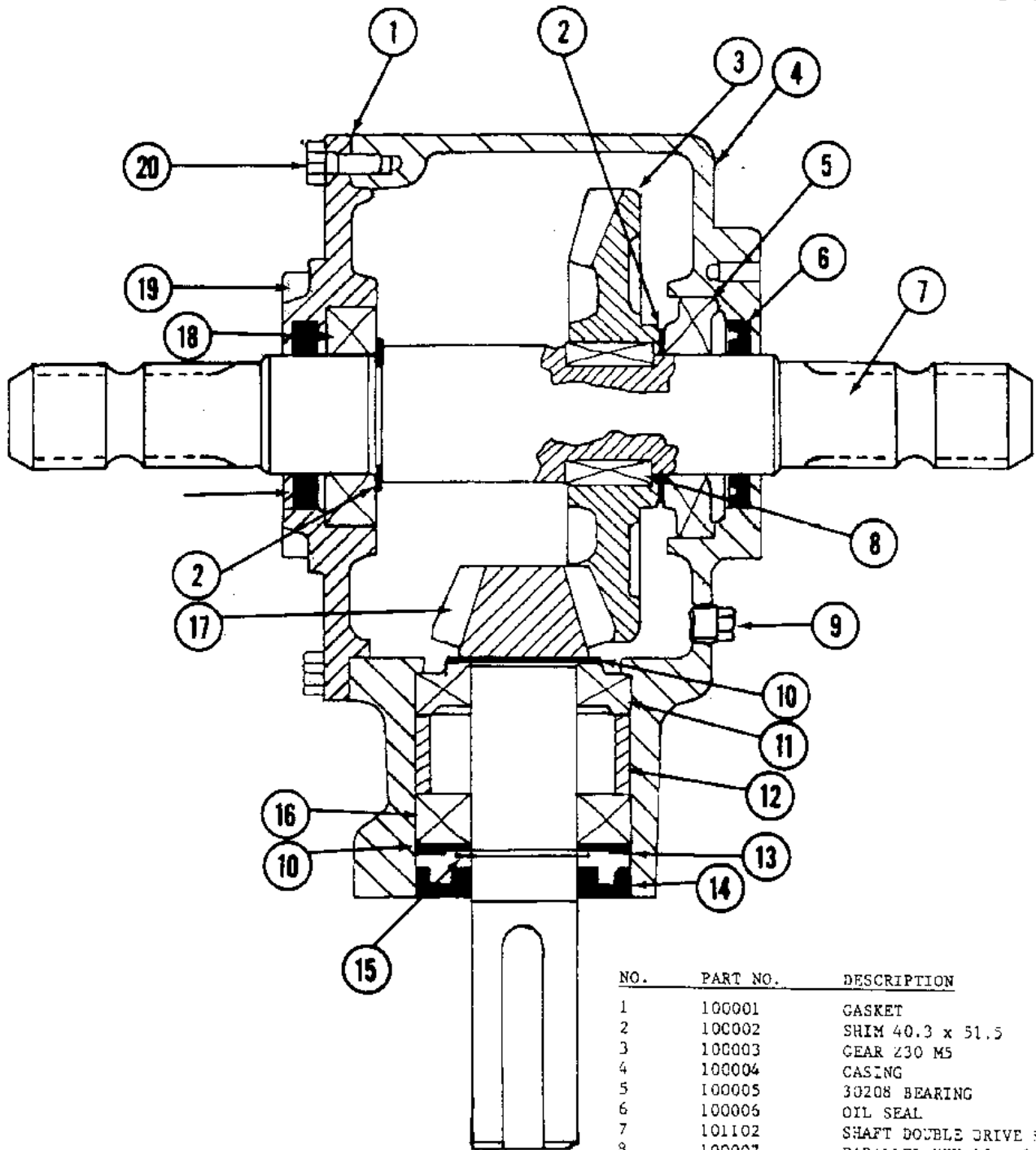


To tighten chain, loosen bolts (4) holding bearings & tightener bracket.  
Screw out bolts (6) to tighten, screw in to loosen.  
After adjusting chain, tighten bolts (4).

NO.	PART NO.	DESCRIPTION
1	801019	5/16" x 3/4" UNC BOLT
2	500008	TOP CASE COVER
3	500010	TOP CASE GASKET
4	801017	1/2" x 2 1/2" UNC BOLT W/NUT
5	501912	TIGHTENER BRACKET
6	801018	1/2" x 1 1/2" UNC BOLT
7	401303	1 3/8" x 40" SHAFT
8	400106	1 3/8" FLANGE BEARING COMPLETE
9	501801	DRUM FRAME



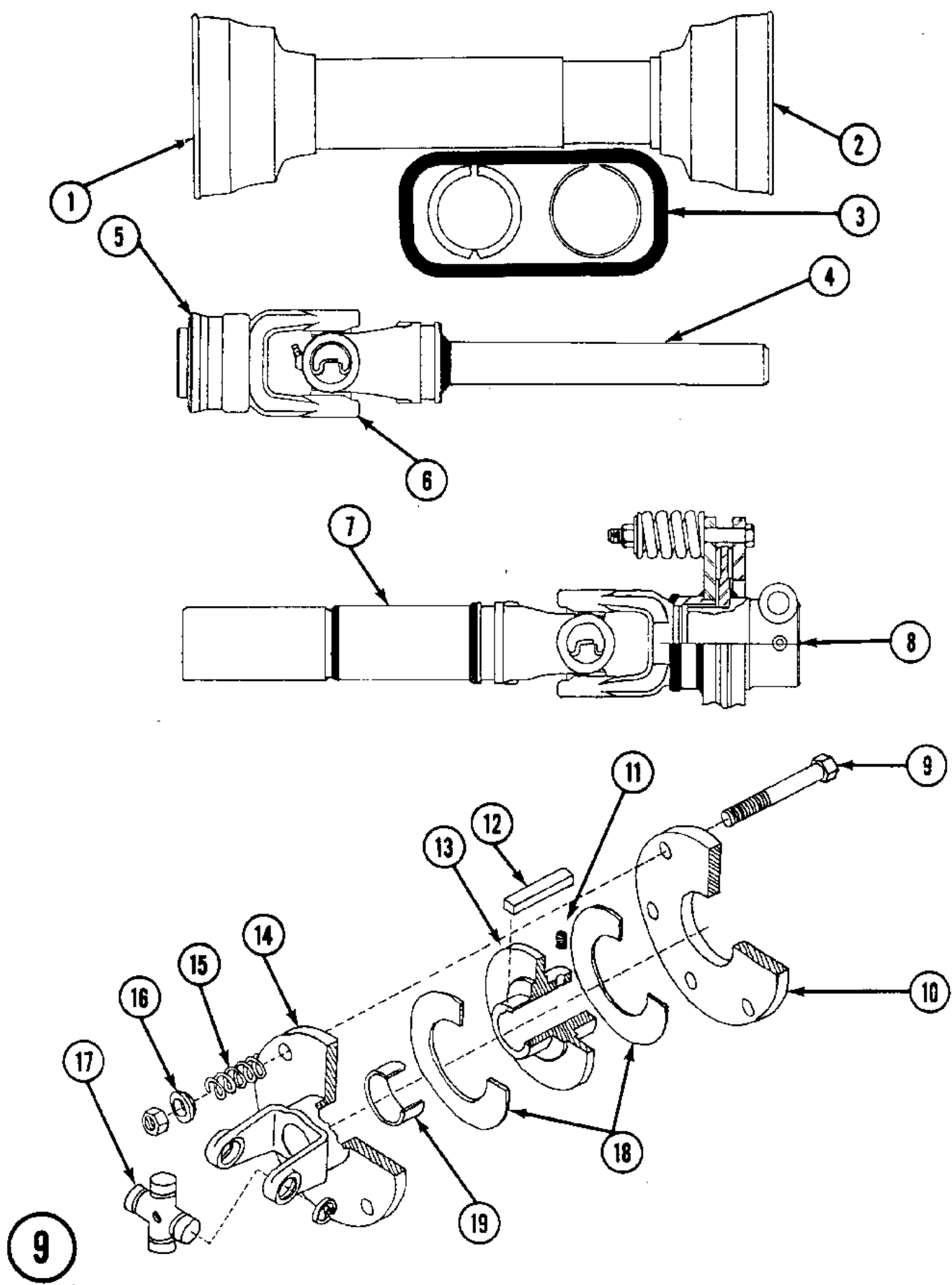
# ROCK-MASTER



NO.	PART NO.	DESCRIPTION
1	100001	GASKET
2	100002	SHIM 40.3 x 51.5
3	100003	GEAR Z30 M5
4	100004	CASING
5	100005	30208 BEARING
6	100006	OIL SEAL
7	101102	SHAFT DOUBLE DRIVE SPLINED
8	100007	PARALLEL KEY 10 x 8 x 30
9	100008	1/4" PLUG
10	100009	SHIM 35.3 x 48
11	100010	30207 BEARING
12	100011	SPACER
13	100012	SNAP RING 72 UN17437
14	100013	OIL SEAL
15	100014	SNAP RING 35 IN17435
16	100015	6207 BEARING
17	100016	PINION GEAR Z10 M5
18	101103	6208 BEARING
19	101104	DOUBLE DRIVE COVER
20	101018	BOLT M8 x 20 8.8
	101101	DOUBLE DRIVE GEAR BOX COMPLETE

M4559 PTO SHAFT

ROCK-MASTER



# ROCK-MASTER

<u>NO.</u>	<u>PART NO.</u>	<u>DESCRIPTION</u>
1	901010	OUTER GUARD
2	901011	INNER GUARD
3	901012	GUARD RETAINER KIT
4	901004	YOKE & SHAFT
5	901013	SPRING-LOK YOKE REPAIR KIT
6	901002	TRACTOR YOKE
7	901005	YOKE & TUBE
8	901016	6000 CLUTCH ONLY COMPLETE
9	901008	6000 CLUTCH BOLT W/NUT
10	900002	CLUTCH PRESSURE PLATE
11	801501	3/8-16 SET SCREW
12	801602	5/16 X 2 KEY
13	900001	CLUTCH HUB
14	901006	YOKE W/CLUTCH PLATE
15	901007	6000 CLUTCH SPRING
16	901009	6000 CLUTCH SPRING HOLDING WASHER
17	901003	1 1/4" JOURNAL KIT
18	900003	CLUTCH FRICTION DISC
19	900004	BRASS BUSHING
20	901014	TRACTOR HALF PTO SHAFT W/GUARD
21	901015	CLUTCH HALF PTO SHAFT W/GUARD
	901001	M4559 PTO COMPLETE

# ROCK-MASTER

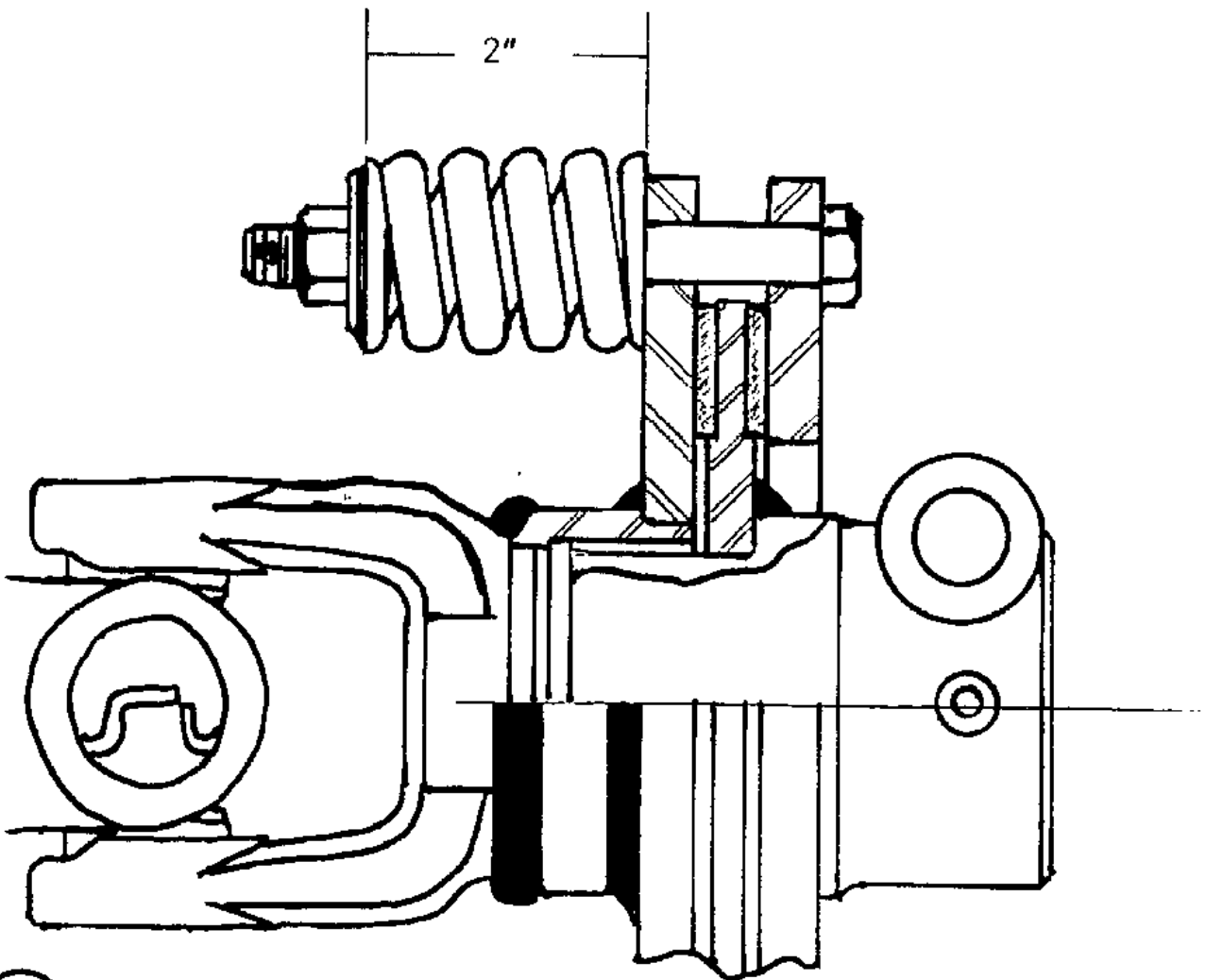
## "6000 CLUTCH"

(MAIN DRIVE LINE PTO ON ALL ROCK PICKERS AND WINDROWERS)

### STORAGE

WHEN YOUR MACHINE IS GOING TO BE INACTIVE ON A SEASONAL BASIS, IT IS ADVISED TO LOOSEN OR REMOVE THE CLUTCH FACINGS, TO AVOID RUST FORMING AND MAKING THEM INOPERATIVE.

"REMEMBER" TO TORQUE THE BOLTS TO THE REQUIRED LENGTH AS SHOWN BELOW.



"IMPORTANT"

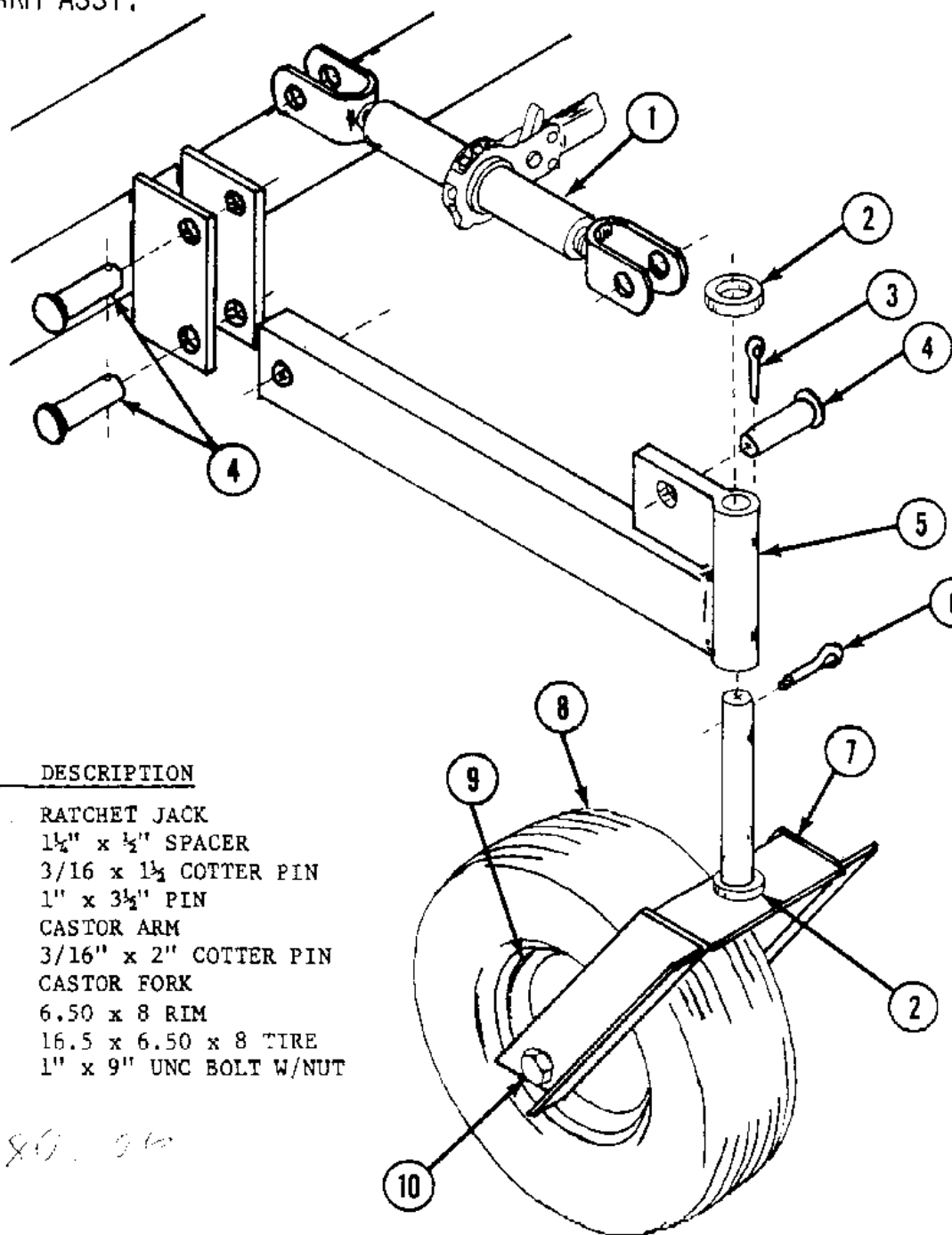
"6000 & 9000 CLUTCH"

OPERATING & MAINTENANCE INSTRUCTIONS

- 1) ATMOSPHERIC CONDITIONS AND PROLONGED STORAGE MAY ALTER THE OPERATING CHARACTERISTICS OF FRICTION CLUTCHES. BEFORE FIRST USE OR AFTER STORAGE OF MORE THAN ONE MONTH ALL SPRING ADJUSTING NUTS SHOULD BE BACKED OFF UNTIL SPRINGS ARE JUST LOOSE, THEN TIGHTENED ONE TURN.
- 2) THE CLUTCH SHOULD THEN BE SLIPPED UNTIL IT STARTS TO SMOKE. THE SPRINGS SHOULD THEN BE SET TO THE DESIRED SPRING SETTING. SET ALL SPRINGS TO THE SAME LENGTH. NOTE THAT AFTER A CLUTCH HAS BEEN "RUN IN" IT WILL SLIP ABOUT 20% HIGHER THAN BEFORE.
- 3) THE TEMPERATURE OF THE CLUTCH SHOULD BE CHECKED OFTEN DURING THE FIRST 20 MIN. OF OPERATION AND ABOUT EVERY 8 HRS. THEREAFTER. IF CLUTCH SMOKES, OR IS TOO HOT TO TOUCH (140°F. PROX.-DON'T BURN YOURSELF), THE SPRINGS SHOULD BE TIGHTENED OR THE CLUTCH WILL BURN UP AND FAIL.
- 4) SOME CLUTCHES MAY HAVE A SPRING STOP INSIDE THE SPRING TO PREVENT TIGHTENING THE SPRING BEYOND A PRESET LENGTH.  
CAUTION ! IF ATTEMPT IS MADE TO TIGHTEN THE SPRING BEYOND THE PRESET LENGTH, THE BOLT MAY BREAK AND THE SPRING WILL THE FASTENER FLY OFF.

# ROCK-MASTER

## CASTOR & ARM ASSY.

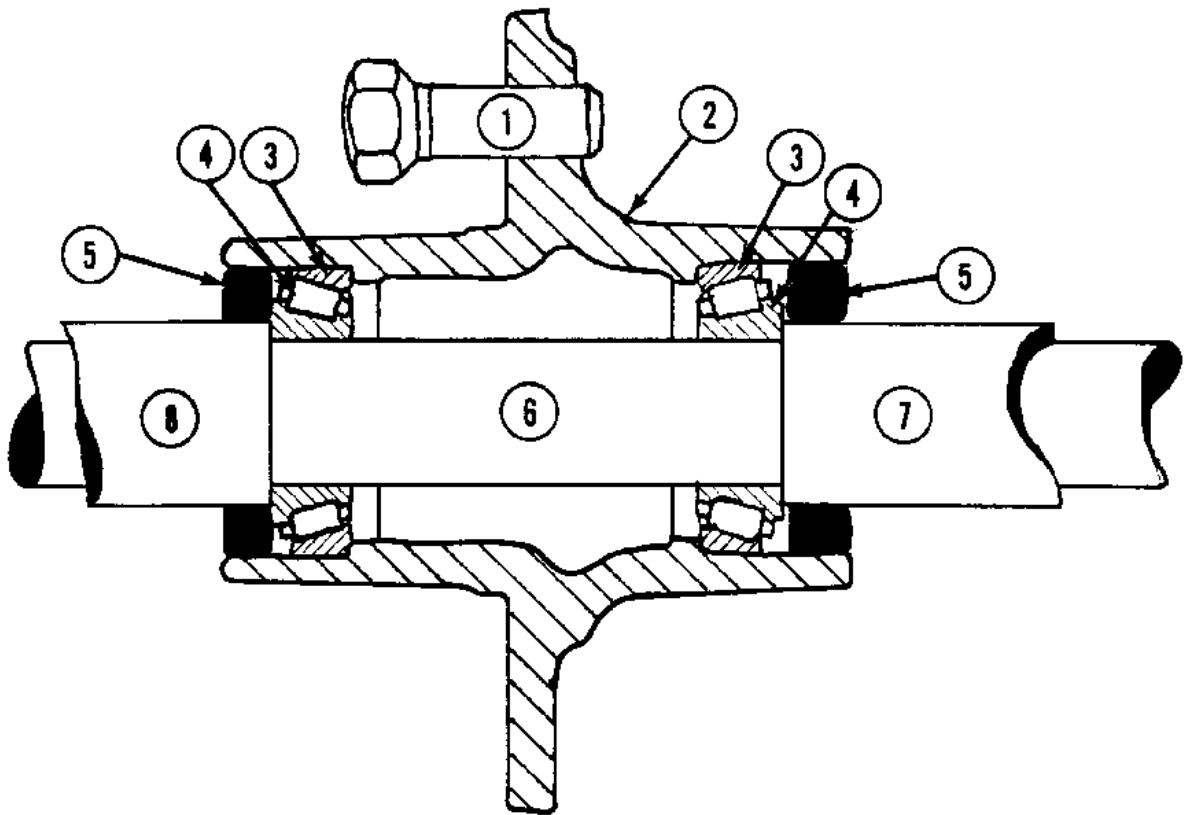


NO.	PART NO.	DESCRIPTION
1	500005	RATCHET JACK
2	801304	1½" x ½" SPACER
3	801402	3/16 x 1½ COTTER PIN
4	801201	1" x 3½" PIN
5	500006	CASTOR ARM
6	801401	3/16" x 2" COTTER PIN
7	500007	CASTOR FORK
8	301201	6.50 x 8 RIM
9	301202	16.5 x 6.50 x 8 TIRE
10	801011	1" x 9" UNC BOLT W/NUT

47 280. 06

# ROCK-MASTER

## 4-BOLT HD211



NO.	PART NO.	DESCRIPTION
1	301204	WB10 ½"-20 UNF x 1½" WHEEL BOLT
2	301203	HD211 4-BOLT WHEEL HUB ONLY
3	301205	L44610 CUP
4	301206	L44643 CONE
5	301207	SE10 GREASE SEAL
6	801011	1" x 9" UNC BOLT W/NUT
7	301208	1" I.D. x 2" L SPACER
8	301209	1" I.D. x 1½" L SPACER

## ROUTINE MAINTENANCE

- PERIODICALLY CHECK AIR PRESSURE IN TIRES AS UNEQUAL PRESSURE WOULD MAKE IT PRACTICALLY IMPOSSIBLE TO LEVEL MACHINE PROPERLY.
- CHECK OIL IN GEAR BOX AND ADD #90 GEAR OIL IF NEEDED.
- CHECK WHEEL BOLTS FOR TIGHTNESS.
- CHECK ALL BOLTS FOR TIGHTNESS.
- CHECK HYD. HOSE AND TUBING CONNECTIONS.
- GREASE TELESCOPIC SHAFT REGULARLY TO MINIMIZE TRUST FORCES.
- CHECK CHAIN TIGHTENER.
- TIGHTEN ALL SET SCREWS.

## SPECIFICATIONS

RAKING WIDTH.....	8'
TIRES.....	16.5 x 6.50 x 8
CHAIN & SPROCKETS.....	#100
PTO DRIVE.....	540 STD.
WEIGHT.....	1200 LBS.

## DANGER

ANY PETOLEUM PRODUCT UNDER PRESSURE CAN INFILTRATE THE SKIN CAUSING SERIOUS AFTER EFFECTS. IF THIS SHOULD HAPPEN, APPLY COLD PACKS TO THE AFFECTED AREA AND SEE A DOCTOR IMMEDIATELY.