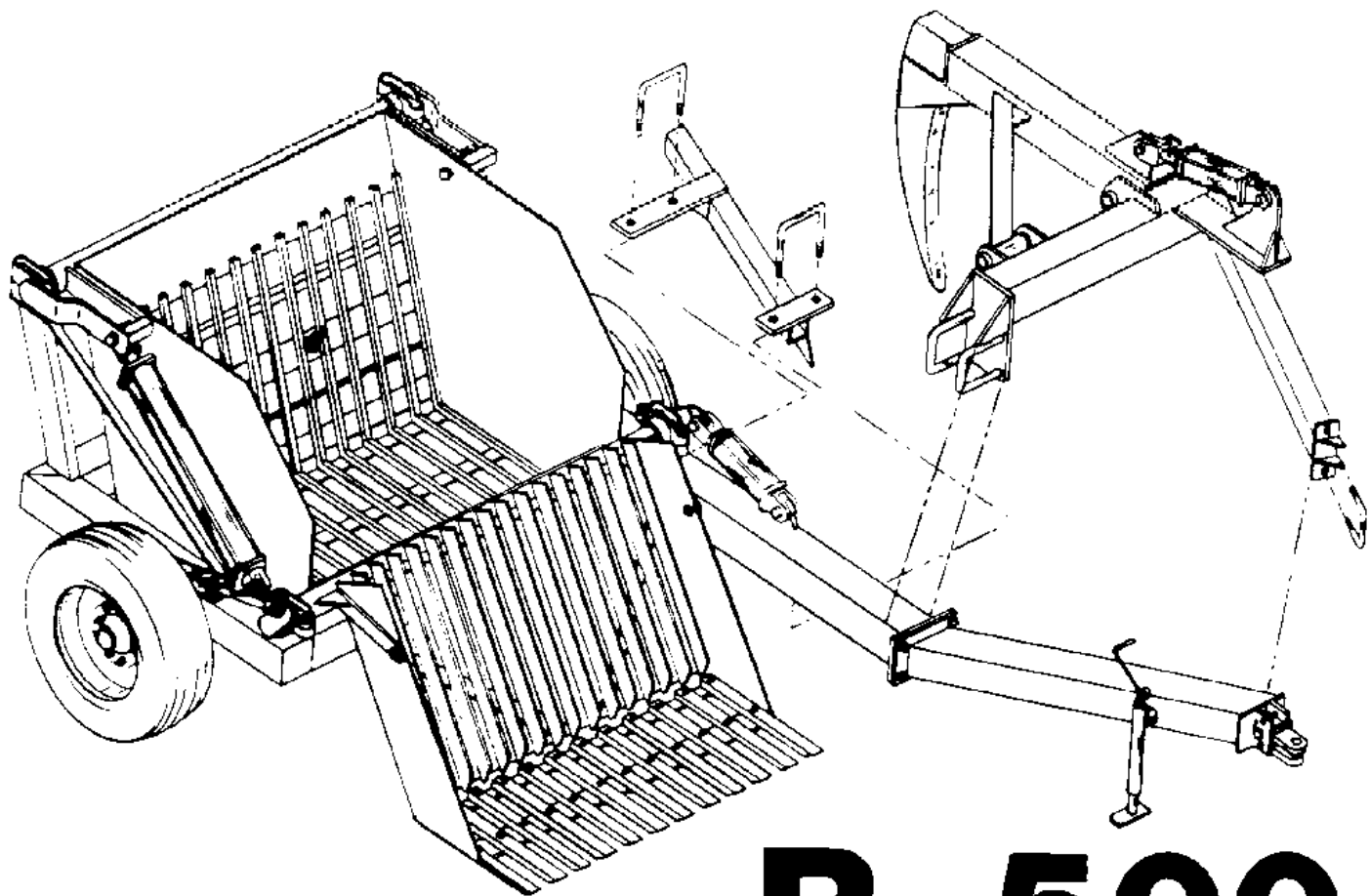


ROCK - MASTER



R-500

ROCK HOOK 1

HIGH-LINE MFG. INC.
ROCK-MASTER PICKERS

HIGH-LINE MFG. INC.

ROCK-MASTER PICKERS

ROCK-MASTER A NEW NAME IN THE ROCK PICKING FIELD, IS MANUFACTURED BY HIGH-LINE MFG. INC. A COMPANY MANNED WITH A CREW WHICH HAS OVER 25 YEARS EXPERIENCE IN THE INDUSTRY.

THIS OPERATOR MANUAL HAS BEEN PREPARED TO PROVIDE INFORMATION NECESSARY FOR THE SAFE AND EFFICIENT OPERATION OF YOUR ROCK-MASTER PICKER, IN IT YOU WILL FIND SAFETY PROCEDURES, MAINTENANCE ROUTINES AND DETAILED PARTS DIAGRAMS.

IF YOU SHOULD FIND THAT YOU REQUIRE INFORMATION NOT COVERED IN THIS MANUAL, FEEL FREE TO CONSULT US OR YOUR LOCAL DEALER.

SHOULD THE NEED ARISE, THIS MANUAL WILL ASSIST YOU IN ACQUIRING REPLACEMENT PARTS. SHOULD YOUR DEALER NOT HAVE THE PARTS YOU REQUIRE IN STOCK, HE WILL BE HAPPY TO ORDER THEM FOR YOU.

THE ROCK-MASTER ROCK PICKER WAS DESIGNED TO WORK IN THE MOST DIFFICULT OF ROCK PICKING SITUATIONS. A LITTLE TIME AND EFFORT SPENT IN PROPER MAINTENANCE WILL INCREASE THE PERFORMANCE AND DURABILITY OF YOUR PICKER.

IN ORDER TO MAINTAIN HIGH EFFICIENCY STANDARDS, CHANGES OR IMPROVMENTS ARE MADE FROM TIME TO TIME. HIGH-LINE MFG. INC. RESERVES THE RIGHT TO MAKE THOSE CHANGES AND ADD IMPROVMENTS WHEN PRACTICAL TO DO SO WITHOUT INCURRING ANY OBLIGATION TO MAKE SUCH CHANGES AND IMPROVEMENTS ON MACHINES SOLD PREVIOUSLY.

HIGH-LINE MFG. INC. THANK YOU AND CONGRATULATE YOU FOR DELECTING A ROCK-MASTER ROCK PICKER AS THE MACHINE OF YOUR CHOICE.

RAYMOND BUSSIÈRE
PRESIDENT

TABLE OF CONTENTS

TABLE OF CONTENTS.....	2
SCOPE.....	3
WARRANTY.....	4
HITCH.....	5
APRON.....	6
RIGHT SIDE VIEW.....	7
LEFT SIDE VIEW.....	8
H614 HUB.....	9
HYDRAULIC LAYOUT.....	10
3" X 30" HYD. CYL.....	11
3" X 10" HYD. CYL.....	12
ROCK HOOK 1.....	13
SPECS. & MAINTENANCE.....	14

YOUR MODEL R-500 ROCK-MASTER STONE PICKER WAS DESIGNED FOR EASE OF HANDLING IN THE TOUGHEST OF CONDITIONS.

THE R-500 WILL CLEAN YOUR FIELDS OF LARGE STONES FAST AND WITH THE GREATEST OF EASE.

THE ROCK-MASTER STONE PICKER IS NOT A LUXURY, IT IS A SOUND ADDITION TO YOUR FARMING OPERATION.

MANY ACRES OF TROUBLE FREE SERVICE CAN BE EXPECTED WITH A LITTLE INSIGHT AND PROPER MAINTENANCE DESCRIBED IN THIS MANUAL.

DIAGRAMS AND PARTS LISTS HAVE BEEN INCLUDED FOR YOUR CONVENIENCE TO ASSIST IN THE ADJUSTMENTS AND UPKEEP THAT MAY BE REQUIRED.

WARRANTY

HIGH-LINE MFG. INC. warrants its products to the original owner for a period of two years from date of purchase. Subject to the following provisions.

- *1st YEAR - PARTS & LABOUR
- *2nd YEAR - PARTS ONLY

*All matters related with the warranty of products must be handled through an authorized ROCK-MASTER dealer.

*Any labour subject to warranty must be authorized by a HIGH-LINE MFG. INC. representative, before work is started.

*Machines used for rental, custom work or industrial/construction use, will be warranted for a period of 6 months from date of purchase. Parts & labour.

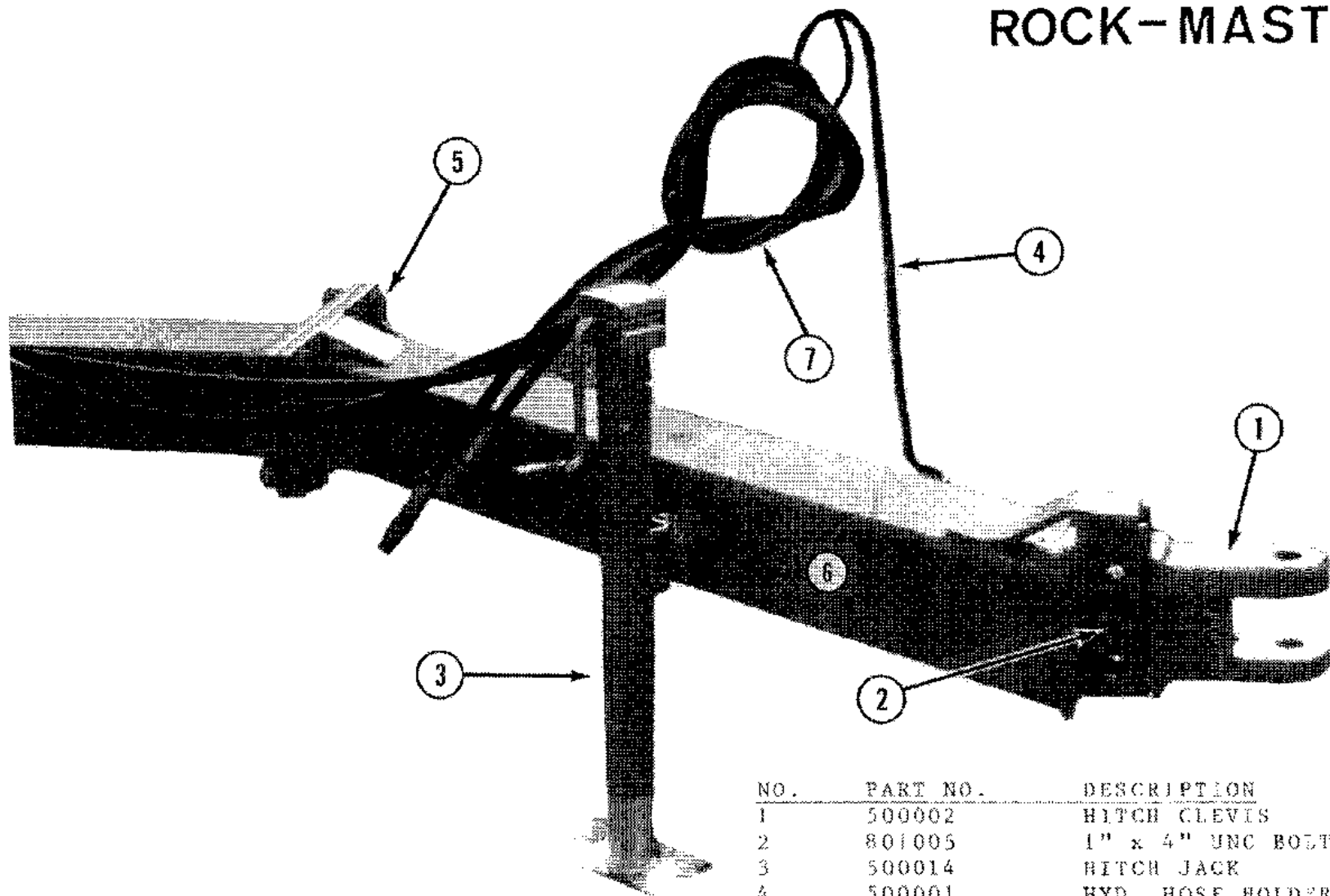
*Warranty will be void if any component of rock-picker is altered or modified in any way, unless written permission is given by HIGH-LINE MFG. INC.

*HIGH-LINE MFG. INC. will not assume any responsibility for whatever damage may occur to equipment to which the rock-picker may be attached.

*Warranty terms and conditions are subject to provincial and state legislation.

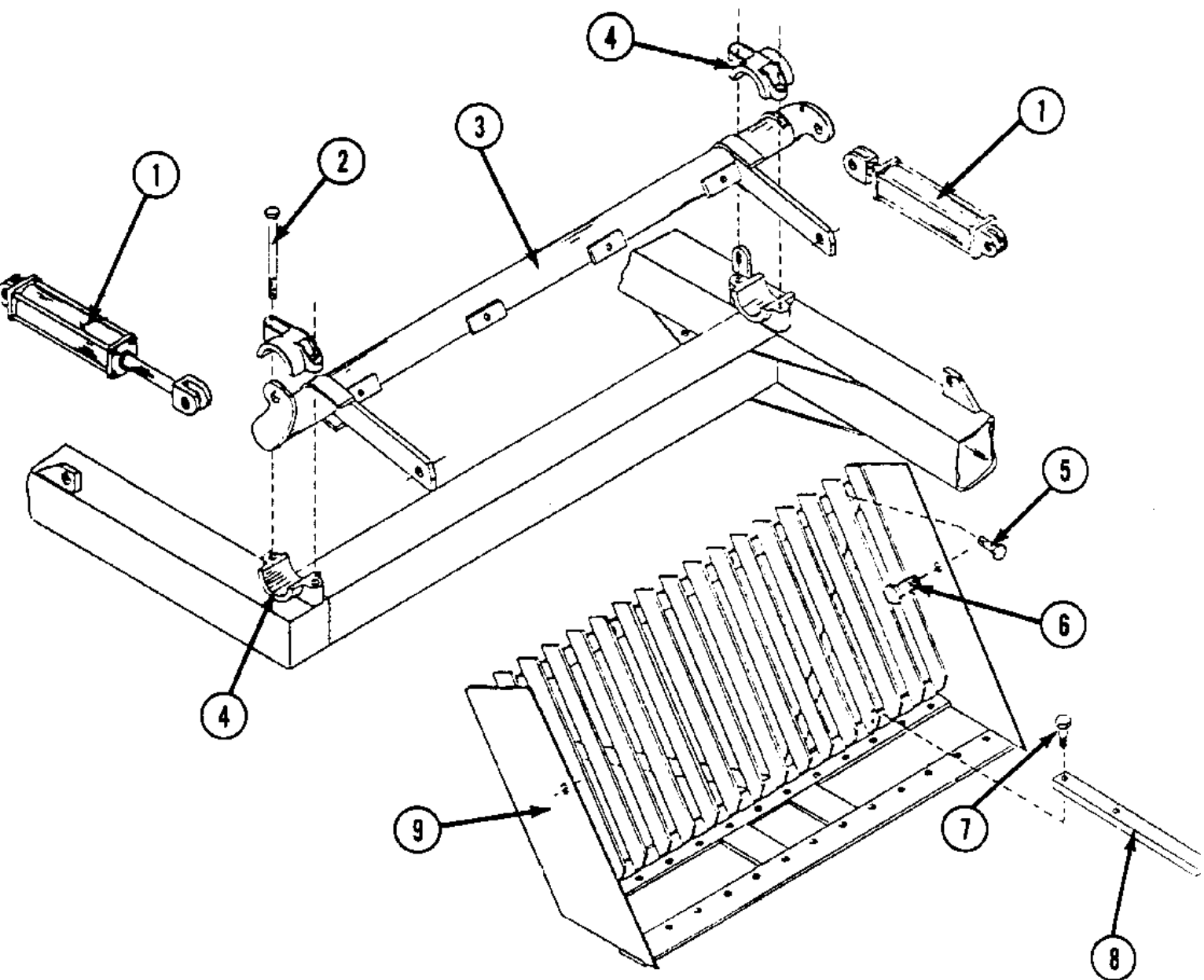
5

ROCK-MASTER



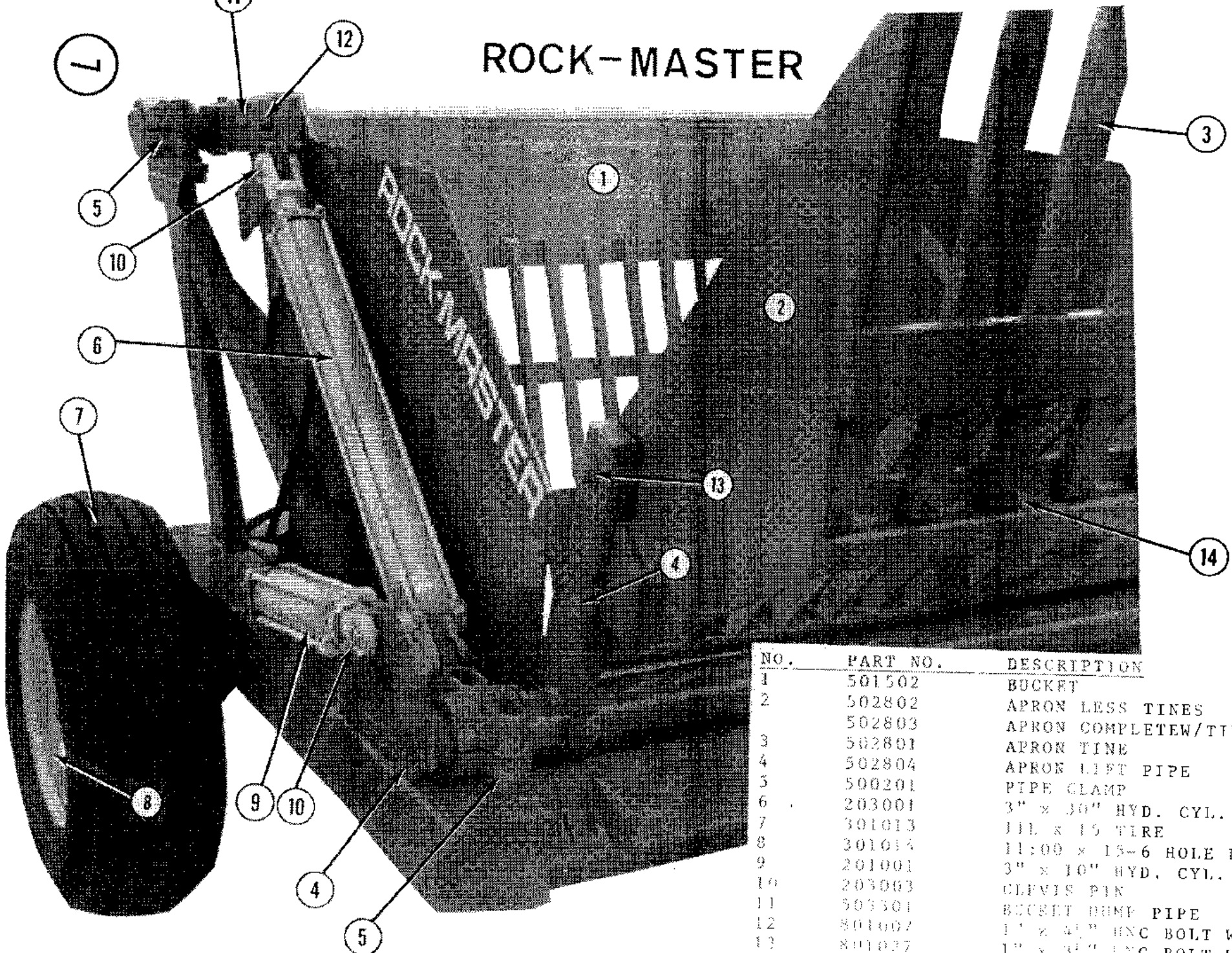
NO.	PART NO.	DESCRIPTION
1	500002	HITCH CLEVIS
2	801005	1" x 4" UNC BOLT W/NUT
3	500014	HITCH JACK
4	500001	HYD. HOSE HOLDER
5	801014	1" x 3" UNC BOLT W/NUT
6	501501	HITCH
7	601003	3/8" x 96" HYD. HOSE

ROCK-MASTER

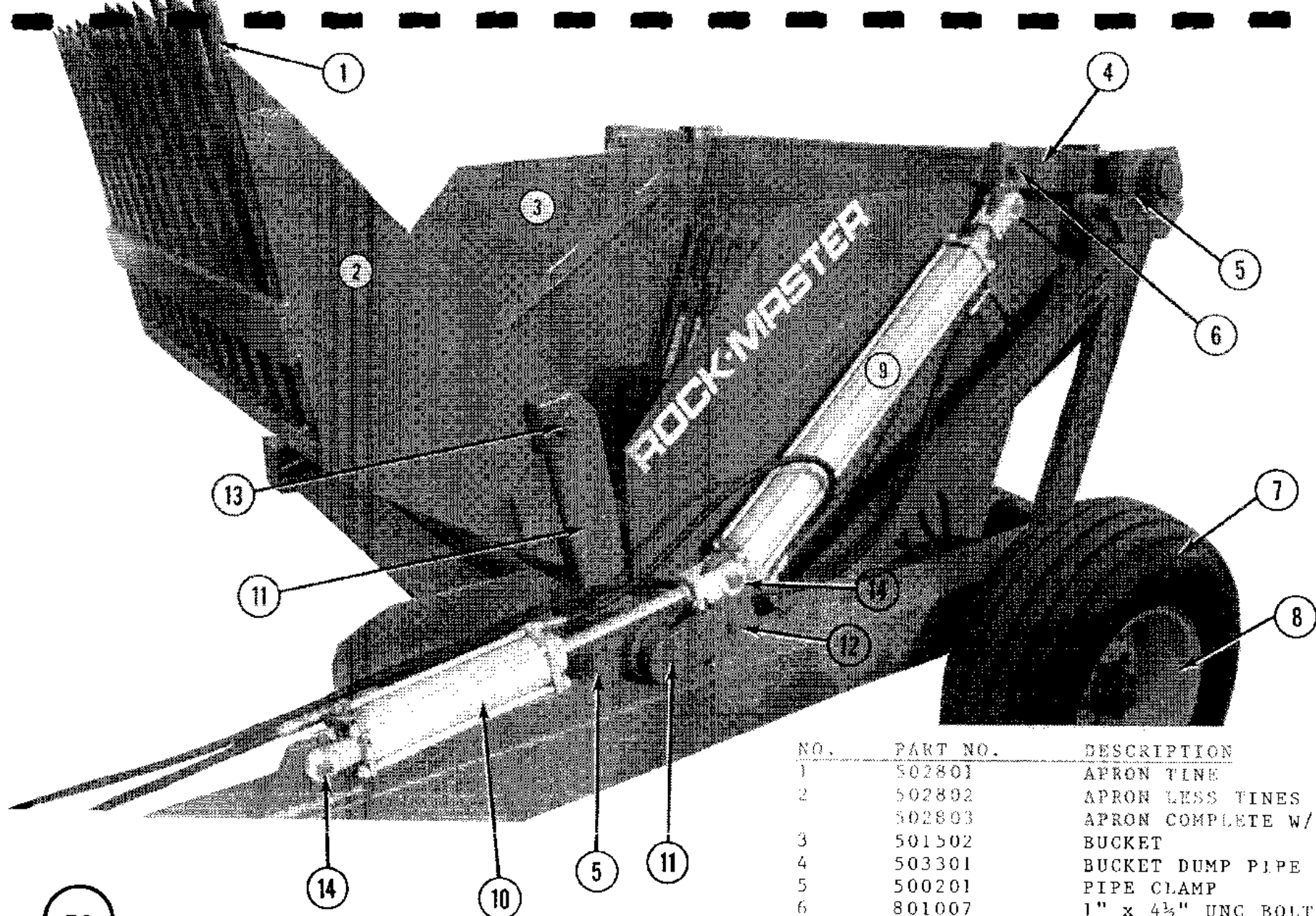


NO.	PART NO.	DESCRIPTION
1	201001	3" x 10" HYD. CYL.
2	801044	5/8" x 10" UNC BOLT W/NUT
3	502804	APRON LIFT PIPE
4	500201	PIPE CLAMP
5	801106	5/8" x 2" UNF BOLT W/NUT
6	801027	1" x 3½" UNC BOLT W/NUT
7	801104	½" x 3½" UNF BOLT W/NUT
8	502801	APRON TINE
9	502802	APRON LESS TINES
	502803	APRON COMPLETE W/TINES

ROCK-MASTER



NO.	PART NO.	DESCRIPTION
1	501502	BUCKET
2	502802	APRON LESS TINES
	502803	APRON COMPLETE W/TINES
3	502801	APRON TINE
4	502804	APRON LIFT PIPE
5	500201	PIPE CLAMP
6	203001	3" x 30" HYD. CYL.
7	301013	11L x 15 TIRE
8	301014	11:00 x 15-6 HOLE RIM
9	201001	3" x 10" HYD. CYL.
10	203003	CLEVIS PIN
11	503301	SECRET DUMP PIPE
12	801007	1" x 41" UNC BOLT W/NUT
13	801027	1" x 41" UNC BOLT W/NUT
14	801104	1" x 31" UNC BOLT W/NUT



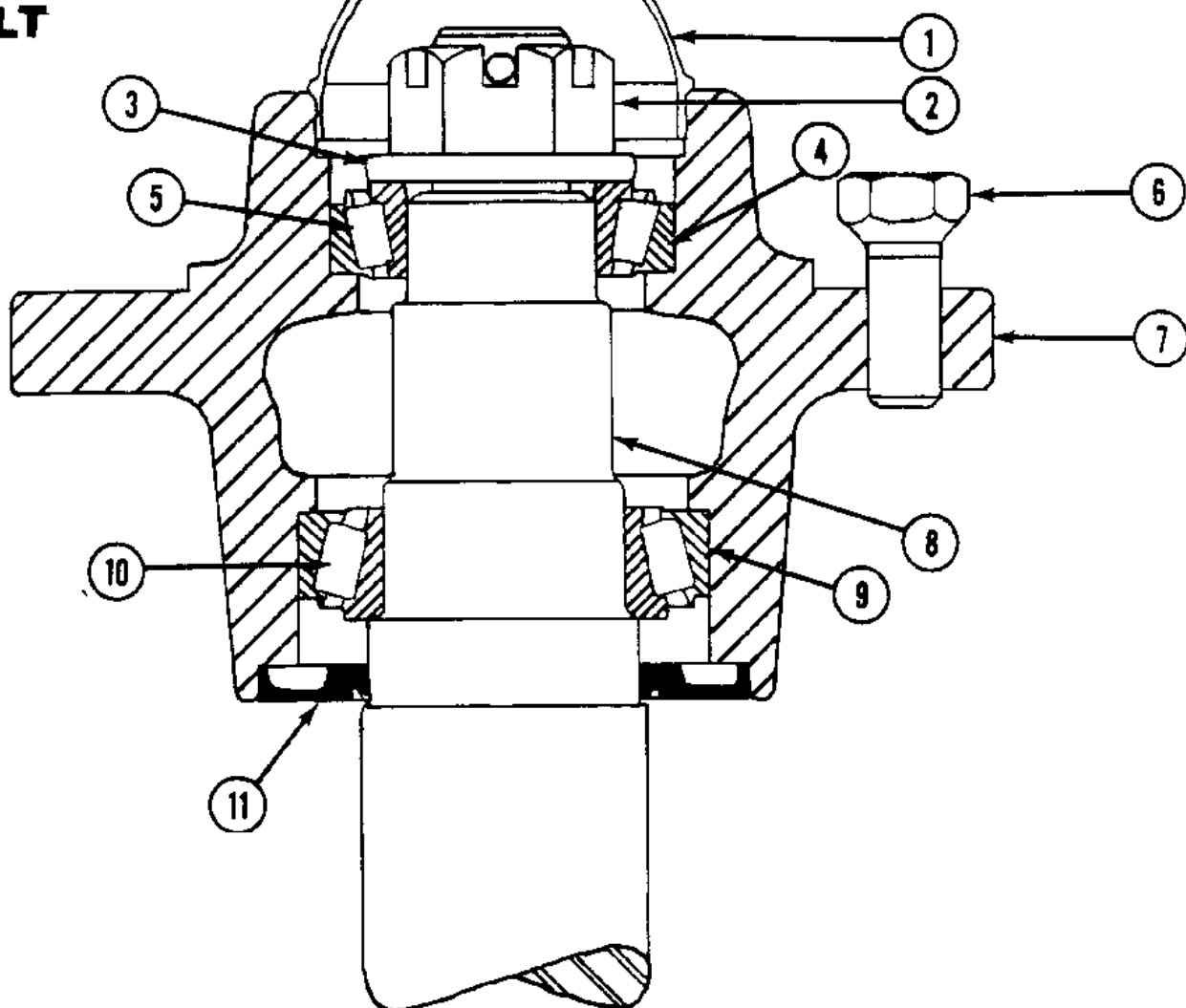
ROCK-MASTER

NO.	PART NO.	DESCRIPTION
1	502801	APRON TINE
2	502802	APRON LESS TINES
	502803	APRON COMPLETE W/TINES
3	501502	BUCKET
4	503301	BUCKET DUMP PIPE
5	500201	PIPE CLAMP
6	801007	1" x 4½" UNC BOLT W/NUT
7	301013	11L x 15 TIRE
8	301014	11:00 x 15-6 HOLE RIM
9	203001	3" x 30" HYD. CYL.
10	201001	3" x 10" HYD. CYL.
11	502804	APRON LIFT PIPE
12	801020	5/8" x 2" UNC BOLT W/NUT
13	801027	1" x 3½" UNC BOLT W/NUT
14	203003	CLEVIS PIN

H614 HUB

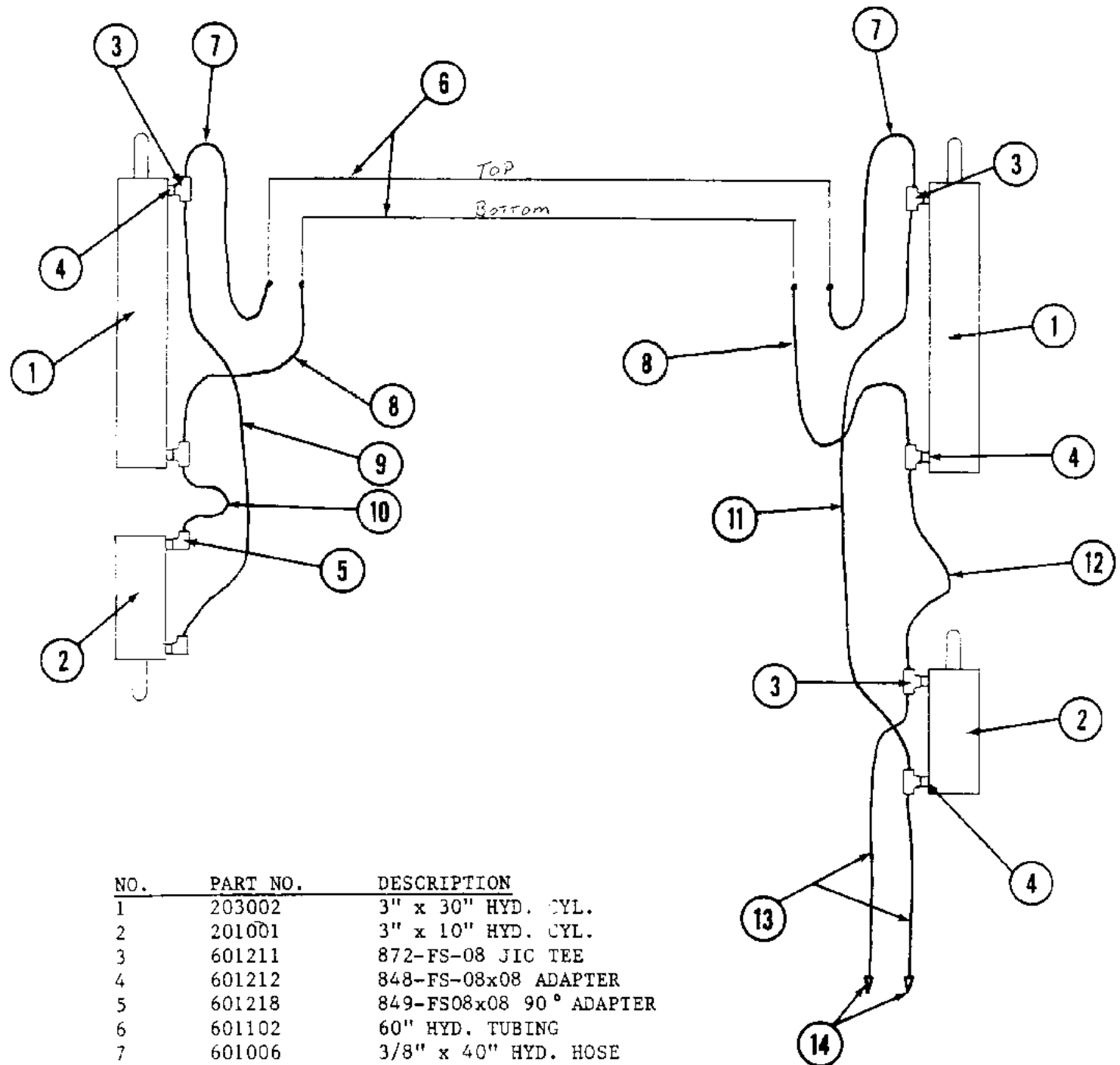
ROCK-MASTER

6-BOLT



NO.	PART NO.	DESCRIPTION
1-	301001	DC15 DUST CAP
2	301002	CASTELLATED NUT 1"- 14 UNS
3	301003	WA17 WASHER 1" I.D. x 2" O.D.
4	301004	LM48510 OUTER CUP
5	301005	LM48548 OUTER CONE
6	301006	WB12 WHEEL BOLT 9/16" - 18 UNF x 1 1/2"
7	301007	H614 HUB
8	301008	SE16 SPINDLE ONLY
9	301009	LM603012 INNER CUP
10	301010	LM603049 INNER CONE
11	301011	SE16 GREASE SEAL

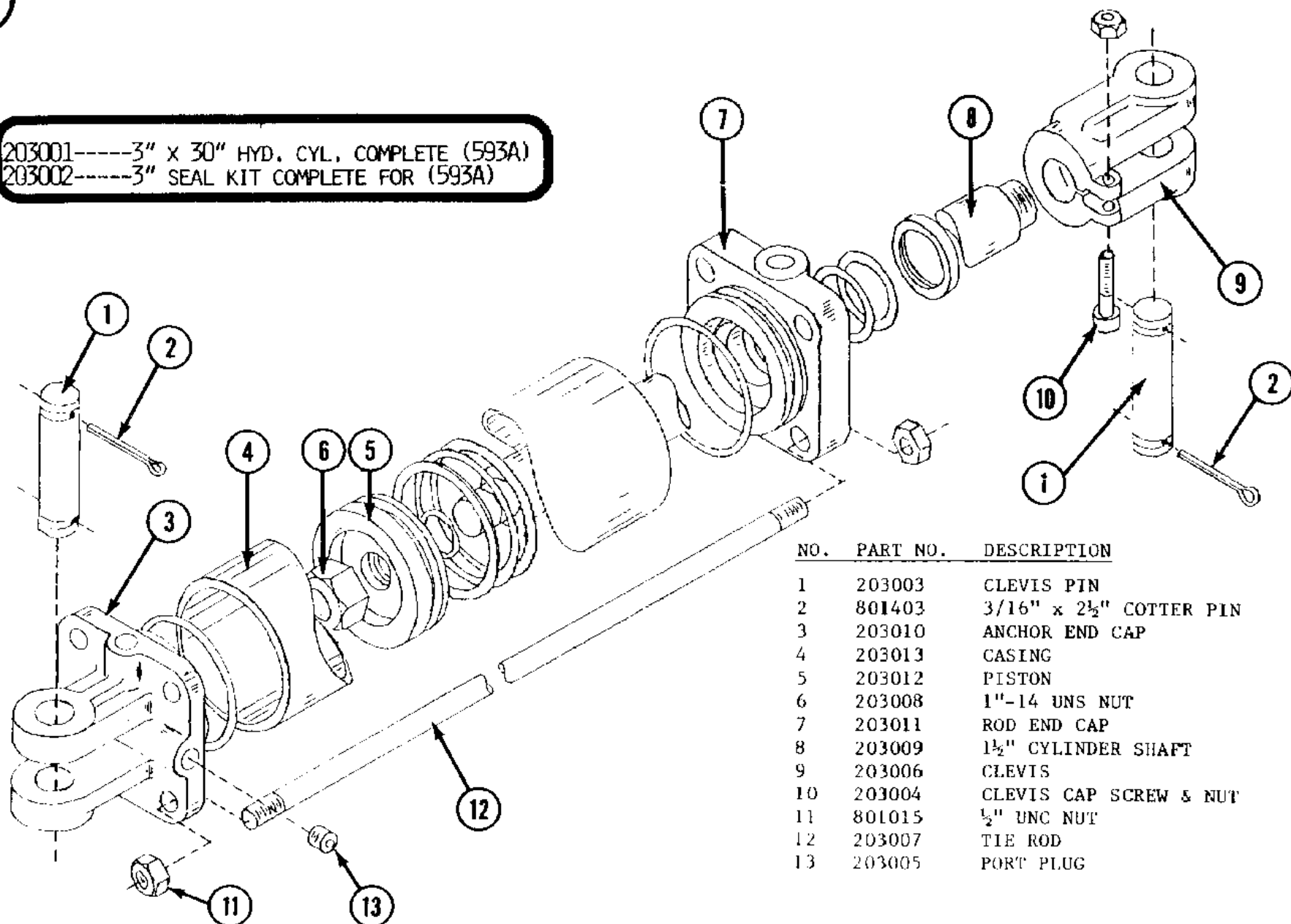
ROCK-MASTER



NO.	PART NO.	DESCRIPTION
1	203002	3" x 30" HYD. CYL.
2	201001	3" x 10" HYD. CYL.
3	601211	872-FS-08 JIC TEE
4	601212	848-FS-08x08 ADAPTER
5	601218	849-FS08x08 90° ADAPTER
6	601102	60" HYD. TUBING
7	601006	3/8" x 40" HYD. HOSE
8	601016	3/8" x 27" HYD. HOSE
9	601010	3/8" x 52" HYD. HOSE
10	601002	3/8" x 26" HYD. HOSE
11	601015	3/8" x 72" HYD. HOSE
12	601006	3/8" x 40" HYD. HOSE
13	601003	3/8" x 96" HYD. HOSE
14	601217	PIONEER MALE TIPS

ROCK-MASTER

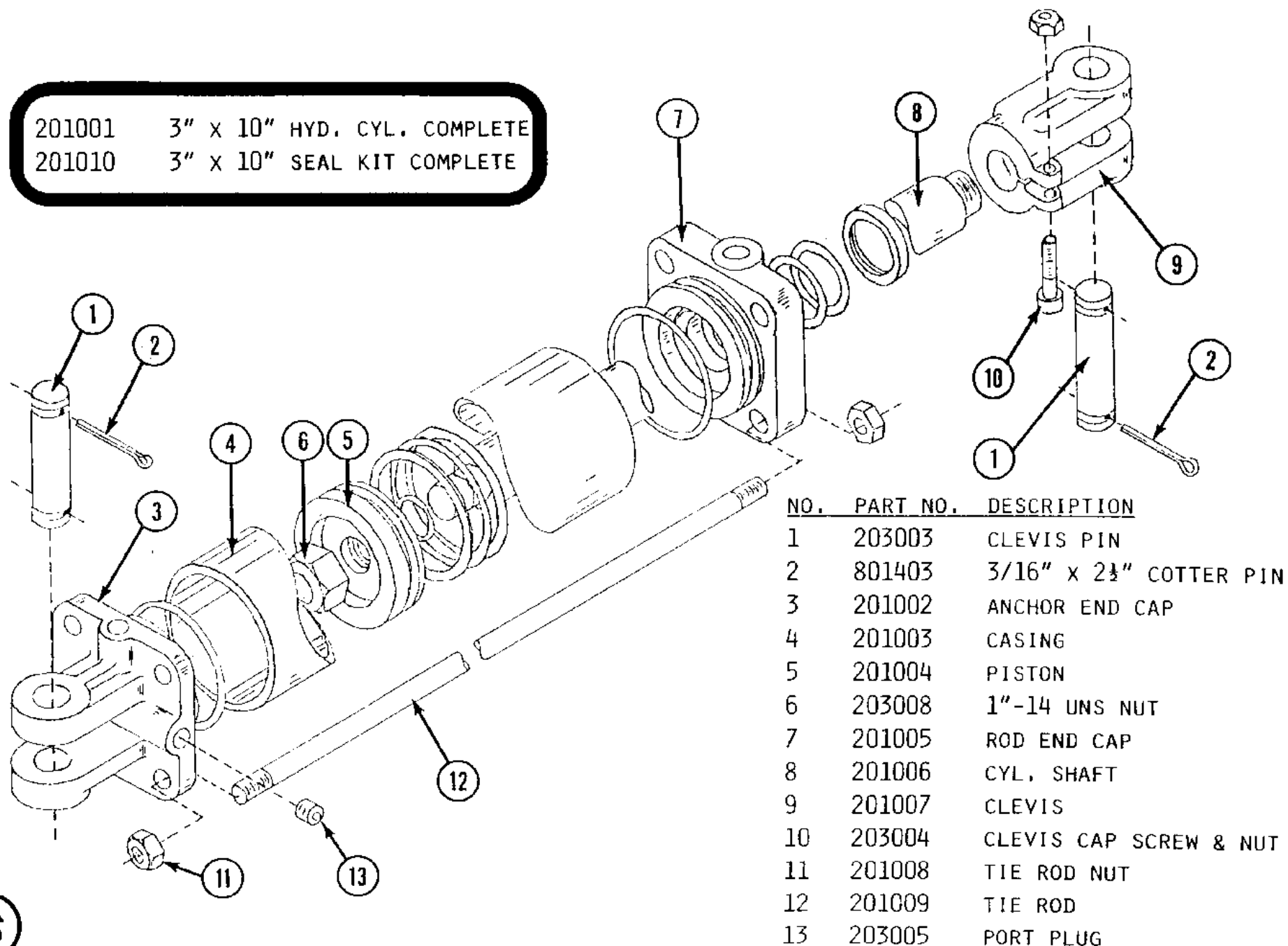
203001-----3" x 30" HYD. CYL. COMPLETE (593A)
203002-----3" SEAL KIT COMPLETE FOR (593A)



NO.	PART NO.	DESCRIPTION
1	203003	CLEVIS PIN
2	801403	3/16" x 2½" COTTER PIN
3	203010	ANCHOR END CAP
4	203013	CASING
5	203012	PISTON
6	203008	1"-14 UNS NUT
7	203011	ROD END CAP
8	203009	1½" CYLINDER SHAFT
9	203006	CLEVIS
10	203004	CLEVIS CAP SCREW & NUT
11	801015	½" UNC NUT
12	203007	TIE ROD
13	203005	PORT PLUG

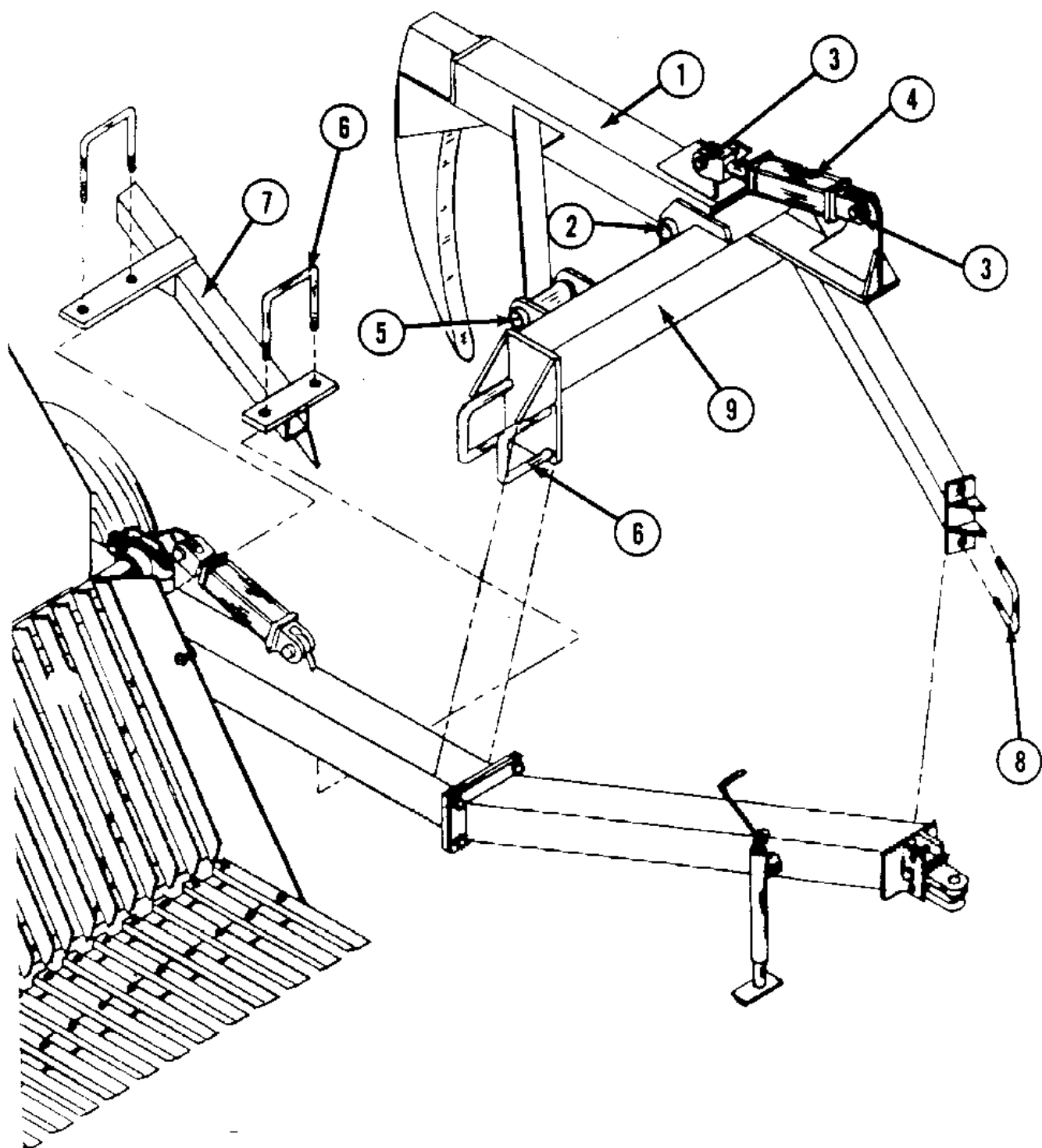
ROCK-MASTER

201001 3" X 10" HYD. CYL. COMPLETE
201010 3" X 10" SEAL KIT COMPLETE



NO.	PART NO.	DESCRIPTION
1	203003	CLEVIS PIN
2	801403	3/16" X 2 1/4" COTTER PIN
3	201002	ANCHOR END CAP
4	201003	CASING
5	201004	PISTON
6	203008	1"-14 UNS NUT
7	201005	ROD END CAP
8	201006	CYL. SHAFT
9	201007	CLEVIS
10	203004	CLEVIS CAP SCREW & NUT
11	201008	TIE ROD NUT
12	201009	TIE ROD
13	203005	PORT PLUG

ROCK-MASTER



NO.	PART NO.	DESCRIPTION
1	501601	HOOK ONLY
2	801212	2" x 14" PIN
3	801032	1 1/2" x 6 UNC BOLT W/NUT
4	206001	6" x 10" HYD. CYL.
5	801213	2" x 12" PIN
6	501603	8" U-CLAMP
7	501602	ROCK GUARD
8	501604	10" U-CLAMP
9	501605	HOOK FRAME

ROUTINE MAINTENANCE

-PERIODICALLY CHECK AIR PRESSURE IN THE TIRES AS UNEQUAL PRESSURE WOULD MAKE IT PRACTICALLY IMPOSSIBLE TO LEVEL MACHINE PROPERLY.

- CHECK WHEEL BOLTS FOR TIGHTNESS.
- CHECK ALL BOLTS FOR TIGHTNESS.
- CHECK HYD. HOSE & TUBING CONNECTIONS.
- GREASE ALL PIPE CLAMPS DAILY.
- CHECK CYLS. DAILY.

SPECIFICATIONS

PICKING WIDTH.....	5'
DUMP HEIGHT.....	4.5'
TIRES.....	11L x 15
CYLINDERS.....	3 x 30
	3 x 10
HYDRAULIC PRESSURE.....	2500 PSI
MAX. HORSEPOWER.....	100
BUCKET CAPACITY.....	2.4 CU. YDS.
WEIGHT.....	2600 lbs.

DANGER

ANY PETOLEUM PRODUCT UNDER PRESSURE CAN INFILTRATE THE SKIN CAUSING SERIOUS AFTER EFFECTS. IF THIS SHOULD HAPPEN, APPLY COLD PACKS TO THE AFFECTED AREA AND SEE A DOCTOR IMMEDIATELY.