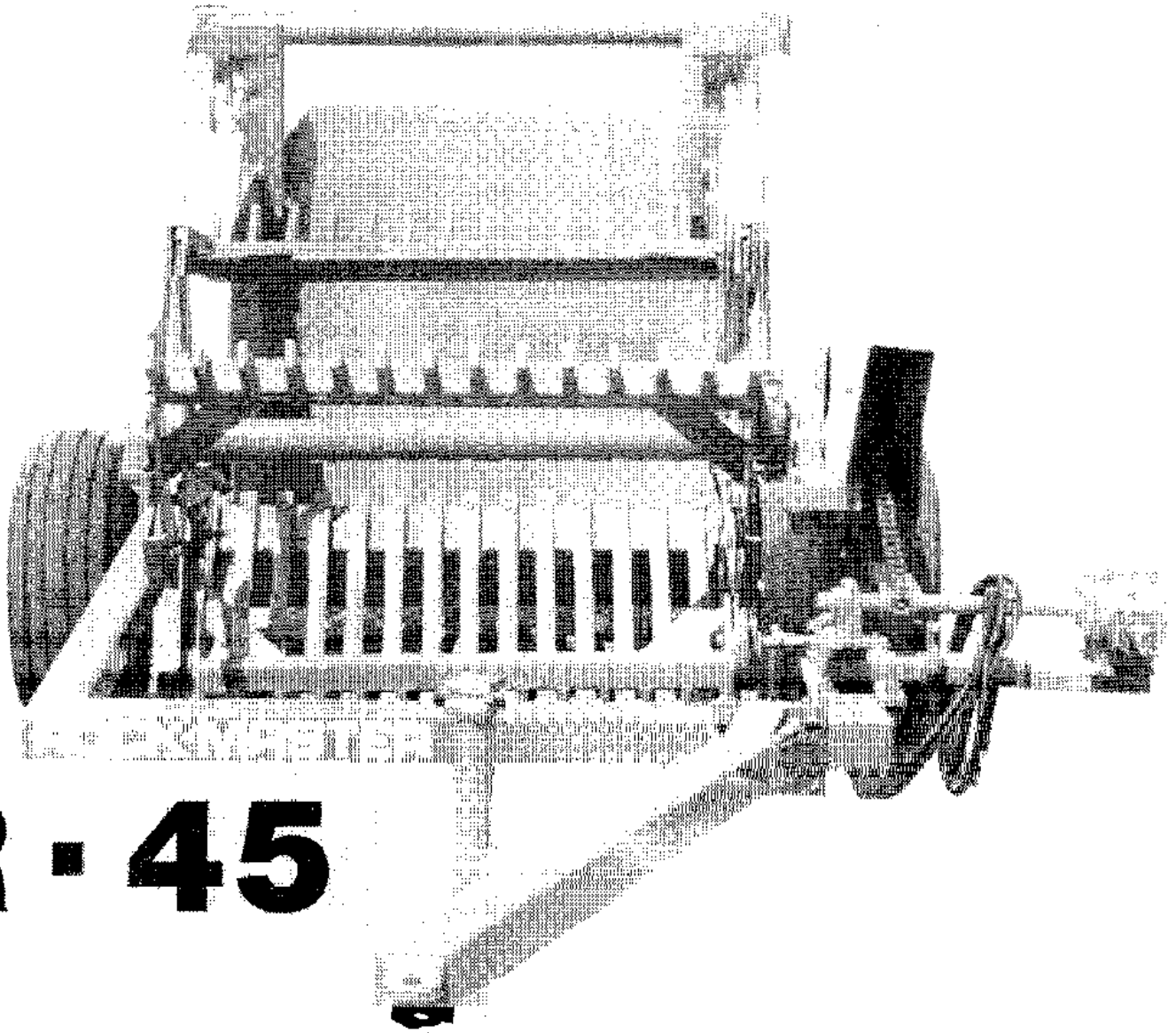


ROCK - MASTER



R - 45

HIGH-LINE MFG. INC.
ROCK-MASTER PICKERS

HIGH-LINE MFG. INC.

ROCK-MASTER PICKERS

ROCK-MASTER A NEW NAME IN THE ROCK PICKING FIELD, IS MANUFACTURED BY HIGH-LINE MFG. INC. A COMPANY MANNED WITH A CREW WHICH HAS OVER 25 YEARS EXPERIENCE IN THE INDUSTRY.

THIS OPERATOR MANUAL HAS BEEN PREPARED TO PROVIDE INFORMATION NECESSARY FOR THE SAFE AND EFFICIENT OPERATION OF YOUR ROCK-MASTER PICKER. IN IT YOU WILL FIND SAFETY PROCEDURES, MAINTENANCE ROUTINES AND DETAILED PARTS DIAGRAMS.

IF YOU SHOULD FIND THAT YOU REQUIRE INFORMATION NOT COVERED IN THIS MANUAL, FEEL FREE TO CONSULT US OR YOUR LOCAL DEALER.

SHOULD THE NEED ARISE, THIS MANUAL WILL ASSIST YOU IN ACQUIRING REPLACEMENT PARTS. SHOULD YOUR DEALER NOT HAVE THE PARTS YOU REQUIRE IN STOCK, HE WILL BE HAPPY TO ORDER THEM FOR YOU.

THE ROCK-MASTER ROCK PICKER WAS DESIGNED TO WORK IN THE MOST DIFFICULT OF ROCK PICKING SITUATIONS. A LITTLE TIME AND EFFORT SPENT IN PROPER MAINTENANCE WILL INCREASE THE PERFORMANCE AND DURABILITY OF YOUR PICKER.

IN ORDER TO MAINTAIN HIGH EFFICIENCY STANDARDS, CHANGES OR IMPROVMENTS ARE MADE FROM TIME TO TIME. HIGH-LINE MFG. INC. RESERVES THE RIGHT TO MAKE THOSE CHANGES AND ADD IMPROVMENTS WHEN PRACTICAL TO DO SO WITHOUT INCURRING ANY OBLIGATION TO MAKE SUCH CHANGES AND IMPROVEMENTS ON MACHINES SOLD PREVIOUSLY.

HIGH-LINE MFG. INC. THANK YOU AND CONGRATULATE YOU FOR DELECTING A ROCK-MASTER ROCK PICKER AS THE MACHINE OF YOUR CHOICE.

RAYMOND BUSSIERE
PRESIDENT

CONTENTS

TABLE OF CONTENTS.....	2
SCOPE.....	3
WARRANTY.....	4
REEL ASSY.....	5
SPRING IDENTIFICATION.....	6
REEL DRIVE ASSY.....	7
FRONT VIEW.....	9
APRON.....	10
GEARBOX.....	11
PTO SHAFT.....	13
PTO CLUTCH.....	15
SIDE VIEW.....	17
H614 HUB.....	18
3 X 30 CYL.....	19
HYD. LAYOUT.....	20
MAINTENANCE & SPECS.....	21

YOUR MODEL R-45 ROCKMASTER STONE PICKER WAS DESIGNED FOR EASE OF HANDLING IN THE TOUGHEST OF CONDITIONS.

THE R-45 WILL CLEAN YOUR FIELDS OF SMALL AND LARGE STONES FAST AND WITH THE GREATEST OF EASE.

THE ROCK-MASTER STONE PICKER IS NOT A LUXURY, IT IS A SOUND ADDITION TO YOUR FARMING OPERATION.

MANY ACRES OF TROUBLE FREE SERVICE CAN BE EXPECTED WITH A LITTLE INSIGHT AND PROPER MAINTENANCE DESCRIBED IN THIS MANUAL.

DIAGRAMS AND PARTS LISTS HAVE BEEN INCLUDED FOR YOUR CONVENIENCE TO ASSIST IN THE ADJUSTMENTS AND UPKEEP THAT MAY BE REQUIRED.

- ALWAYS DISENGAGE PTO BEFORE DISMOUNTING TRACTOR.
- DO NOT OPERATE UNLESS PTO GUARDS ARE IN PLACE.
- PTO GUARDS MUST TURN FREELY AND BE PROPERLY ATTACHED AND MAINTAINED.
- PTO SHAFTS MUST BE SECURLY LOCKED ONTO TRACTOR AND IMPLEMENT SHAFTS.
- KEEP YOURSELF AND OTHERS CLEAR OF ROTATING PARTS TO PREVENT INJURY
- READ ALL SAFETY "NOTES".
- PAY ATTENTION TO ALL "WARNING & SAFETY DECALS.
- ABOVE ALL "BE CAREFUL".

WARRANTY

HIGH-LINE MFG. INC. warrants its products to the original owner for a period of two years from date of purchase. Subject to the following provisions.

- *1st YEAR - PARTS & LABOUR
- *2nd YEAR - PARTS ONLY

*All matters related with the warranty of products must be handled through an authorized ROCK-MASTER dealer.

*Any labour subject to warranty must be authorized by a HIGH-LINE MFG. INC. representative, before work is started.

*Machines used for rental, custom work or industrial/construction use, will be warranted for a period of 6 months from date of purchase. Parts & labour.

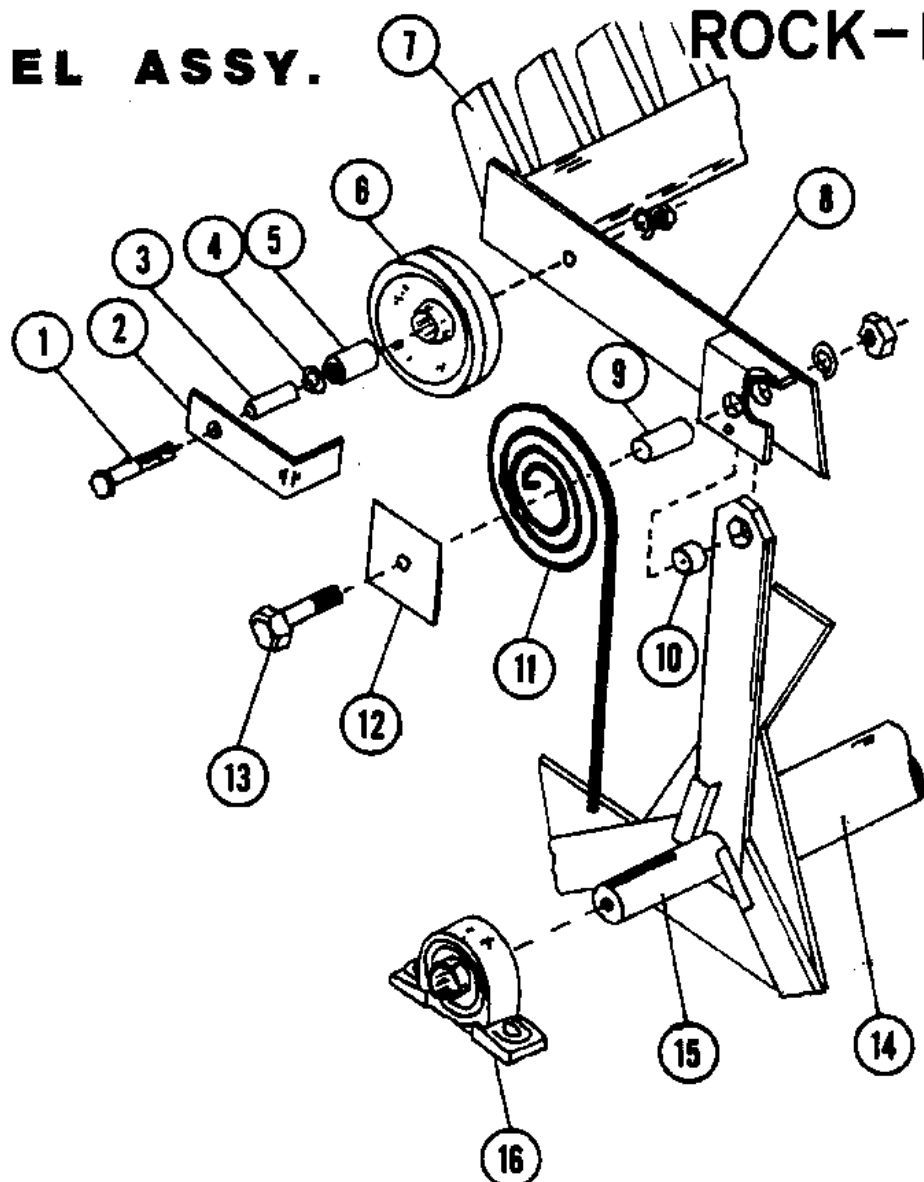
*Warranty will be void if any component of rock-picker is altered or modified in any way, unless written permission is given by HIGH-LINE MFG. INC.

*HIGH-LINE MFG. INC. will not assume any responsibility for whatever damage may occur to equipment to which the rock-picker may be attached.

*Warranty terms and conditions are subject to provincial and state legislation.

REEL ASSY.

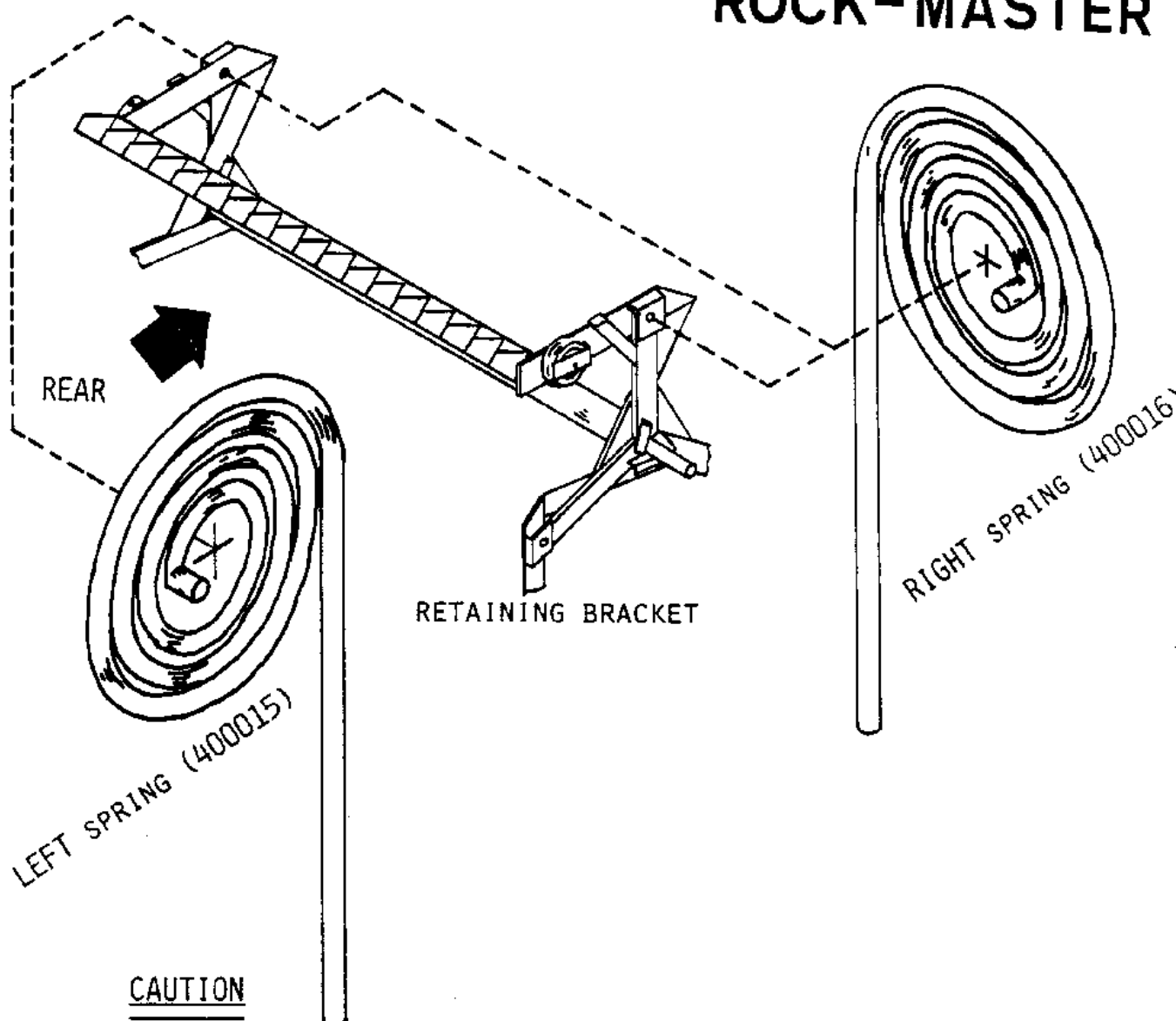
ROCK-MASTER



NO.	PART NO.	DESCRIPTION
1	801003	3/4" x 4 1/2" BOLT W/NUT (HG)
2	401103	BOGEY WHEEL BRACKET
3	400007	SPANNER SLEEVE
4	400008	BOGEY WHEEL SEAL
5	400009	BOGEY WHEEL BEARING
6	400010	8" BOGEY WHEEL
7	400011	REEL BAT TOOTH
8	401004	REEL BAT ONLY
9	400012	1 1/16" x 2 3/8" BUSHING
	400013	1 1/16" x 3 1/8" BUSHING
10	400014	1 5/16" x 3/4" BUSHING
11	400015	LEFT REEL SPRING
	400016	RIGHT REEL SPRING
12	400017	SPRING HOLDING PLATE
13	801101	5/8" x 3 1/2" UNF BOLT W/NUT
	801102	5/8" x 4 3/8" UNF BOLT W/NUT
14	401005	REEL LESS BATS
	401006	REEL W/BATS COMPLETE
15	400002	2" REEL SHAFT
16	400003	2" PILLOW BLOCK COMPLETE

REEL SPRING IDENTIFICATION

ROCK-MASTER



CAUTION

WHEN REMOVING REEL SPRINGS 400015 OR 400016 MAKE SURE YOU UNLATCH IT FROM IT'S RETAINING BRACKET, BEFORE REMOVING BOLTS 801101 OR 801102.

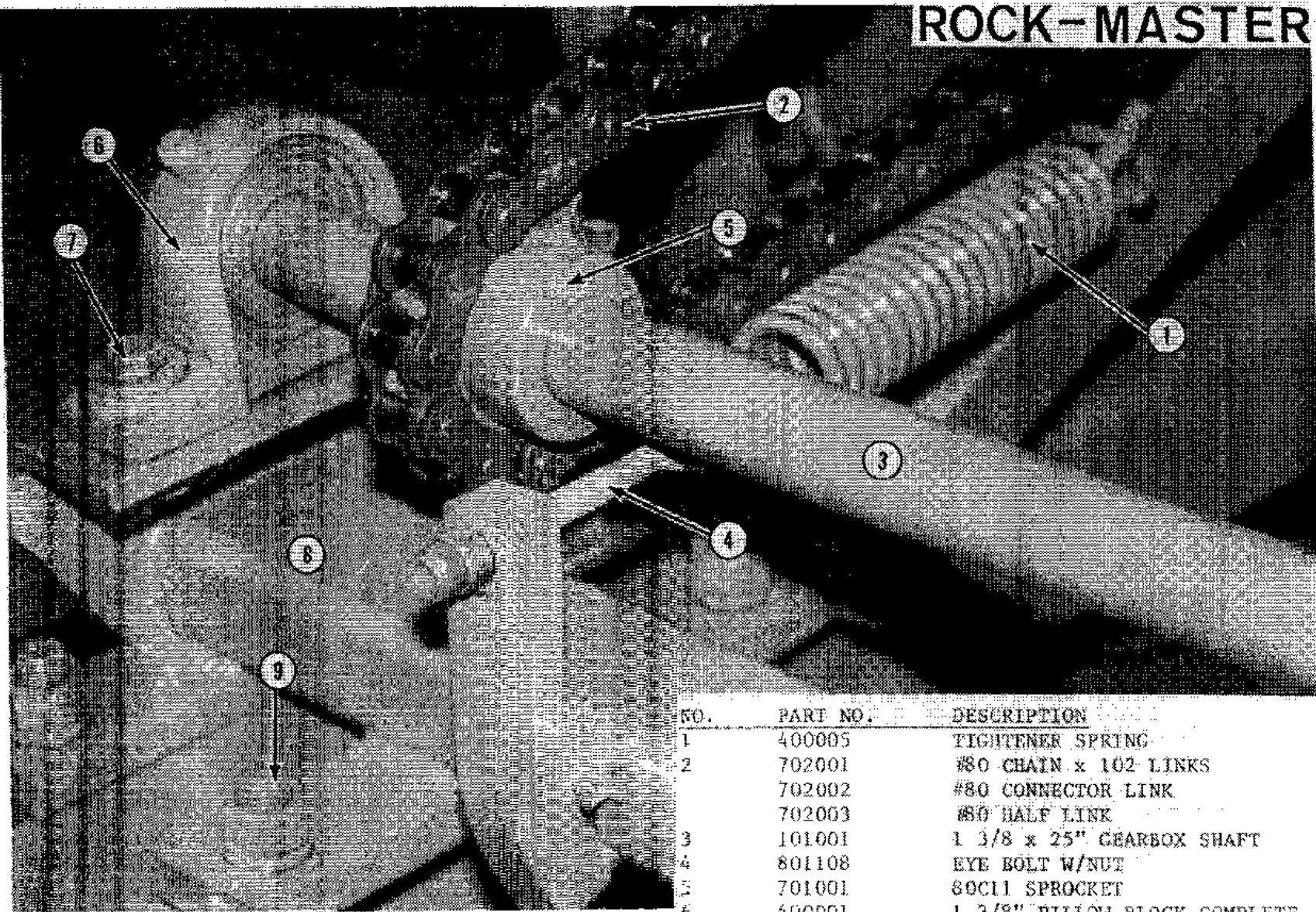
IMPORTANT NOTE

WHEN REFERING TO A MACHINE OR PARTS THERE-OF, IN REGARDS TO EITHER RIGHT OR LEFT HAND, IT SHOULD BE DETERMINED WHILE FACING THE REAR OF THE MACHINE.

NOTE:

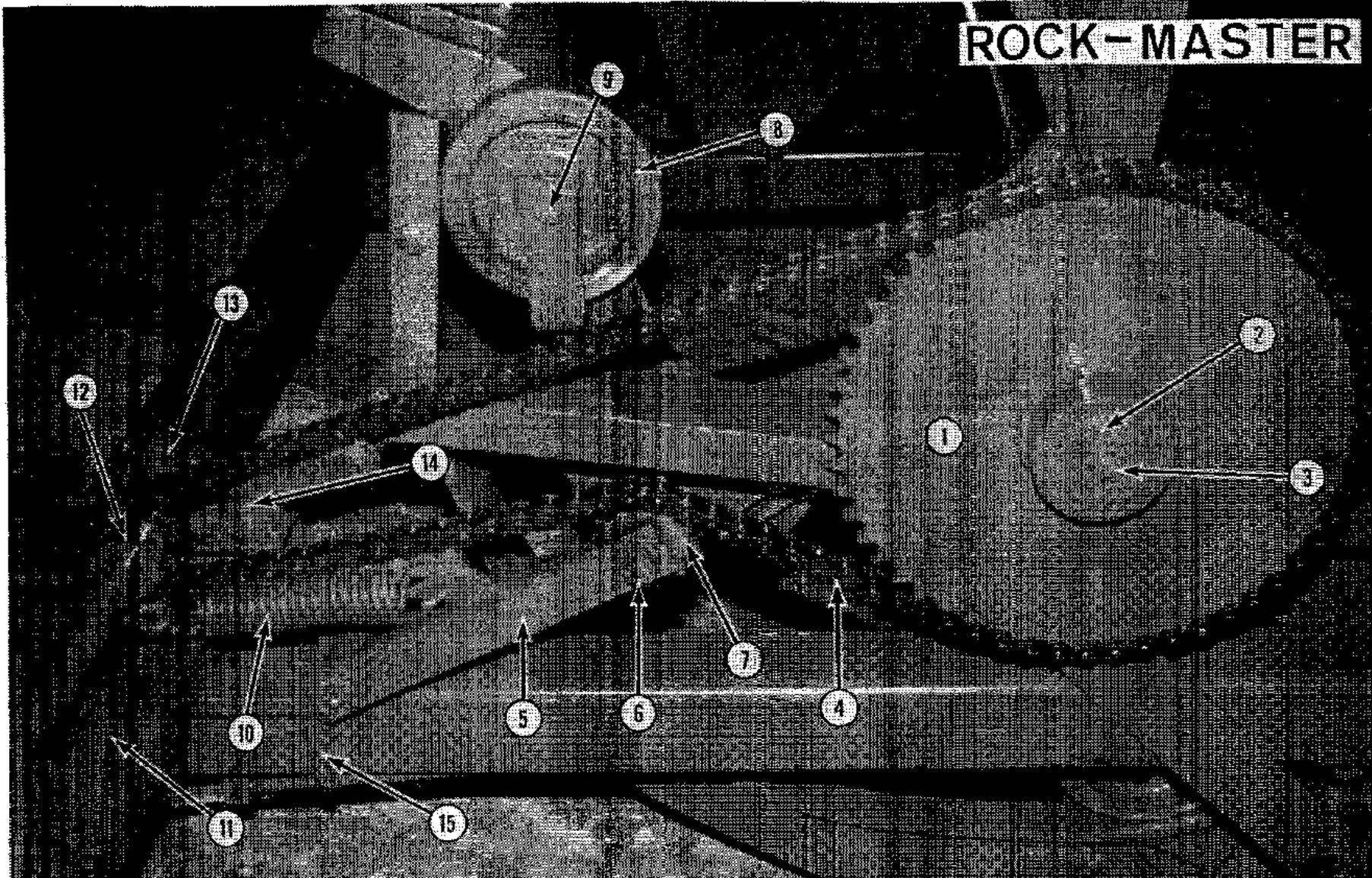
- DEPRESS CHAIN TIGHTENER PERIODICALLY TO ASSURE FREE MOVEMENT.
- FOR YOUR OWN SAFETY, REPLACE CHAIN GUARD AFTER ANY MAINTENANCE OR ADJUSTMENTS.

ROCK-MASTER



NO.	PART NO.	DESCRIPTION
1	400005	TIGHTENER SPRING
2	702001	#80 CHAIN & 102 LINKS
	702002	#80 CONNECTOR LINK
	702003	#80 HALF LINK
3	101001	1 3/8 x 25" GEARBOX SHAFT
4	801108	EYE BOLT W/NUT
5	701001	80C11 SPROCKET
6	400001	1 3/8" PILLOW BLOCK COMPLETE
7	801008	1/2" x 2" UNC BOLT W/NUT
8	401002	GEARBOX MOUNT
9	501905	3/4" x 4" x 6" U-CLAMP

ROCK-MASTER

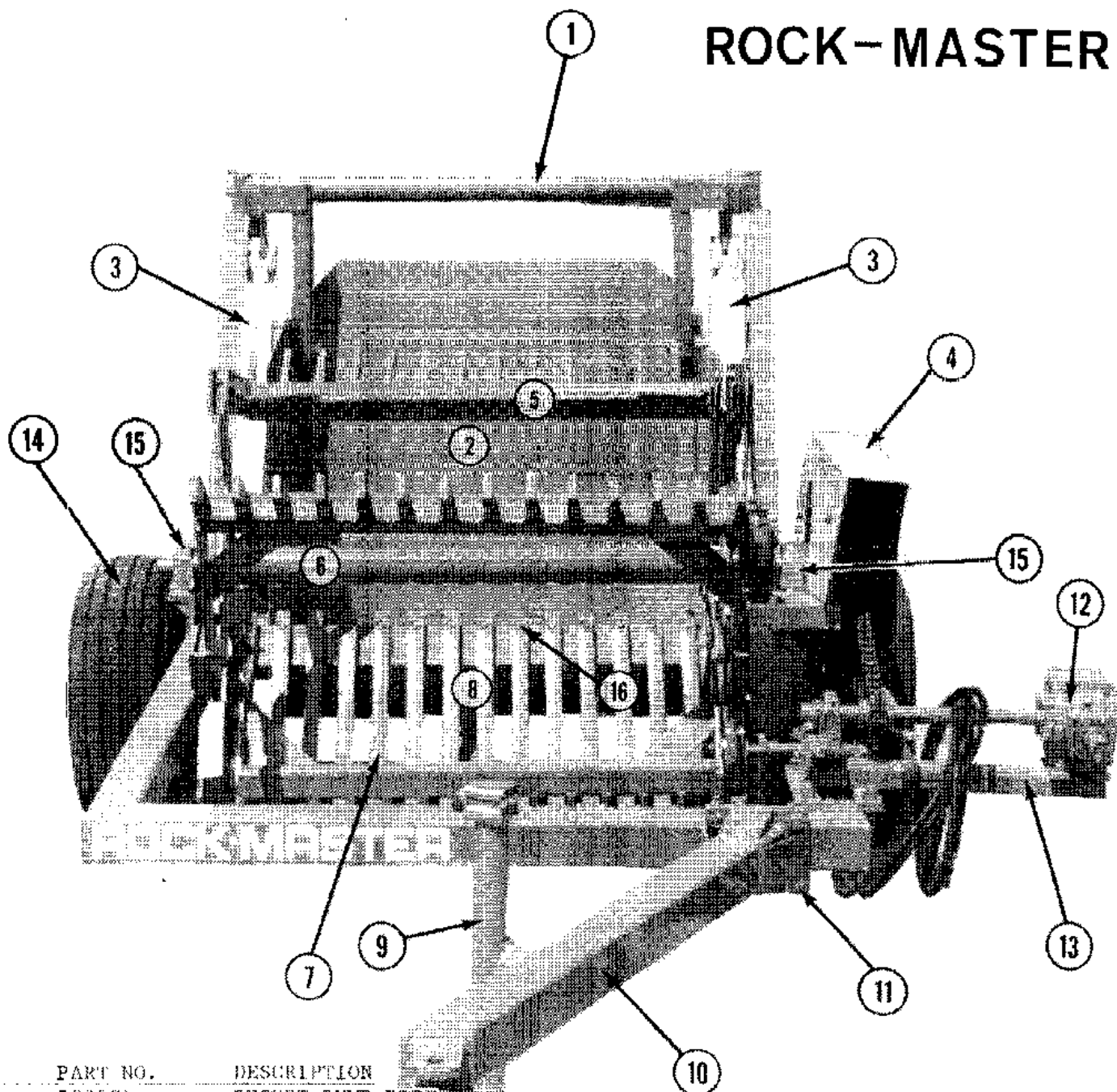


NO.	PART NO.	DESCRIPTION
1	701002	80C50 SPROCKET
2	801302	1/2" x 3 1/8" O.D. Washer
3	801002	1/2" x 1" UNC BOLT
4	702001	#80 CHAIN x 102 PINS
	702002	#80 CONNECTOR LINK
	702003	#80 HALF LINK
5	401001	IDLER ARM
6	801025	3/4" x 2 3/4" UNC BOLT W/NUT
7	701003	80A12 IDLER SPROCKET

NO.	PART NO.	DESCRIPTION
8	400010	8" BOGEY WHEEL
9	801003	3/4" x 4 1/2" BOLT W/NUT (HG)
10	400005	TIGHTENER SPRING
11	401002	GEARBOX MOUNT
12	701001	80C11 SPROCKET
13	400001	1 3/8" PILLOW BLOCK COMPLETE
14	801008	1/2" x 2" UNC BOLT W/NUT
15	501905	3/4" x 4" x 6" J-CLAMP



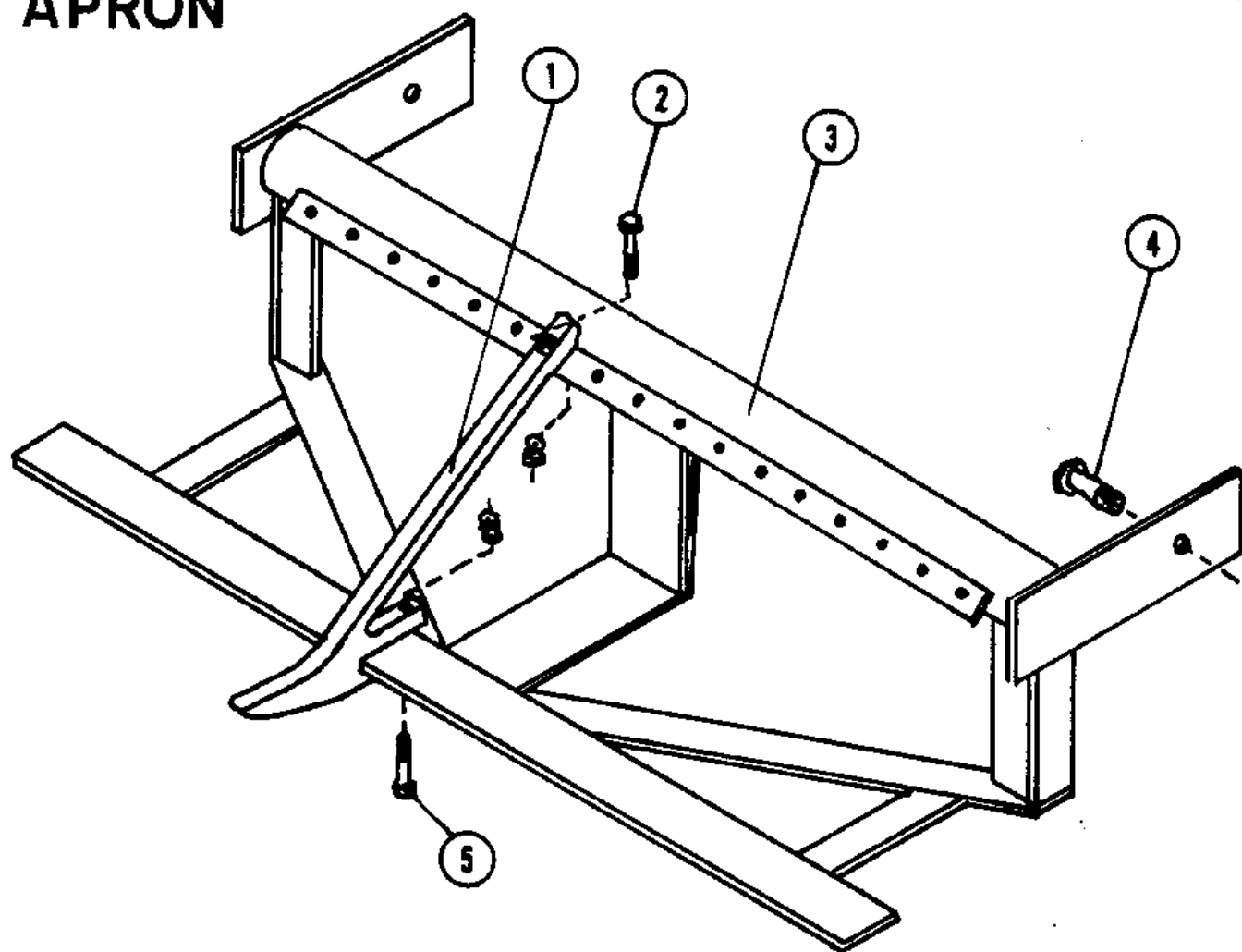
ROCK-MASTER



NO.	PART NO.	DESCRIPTION
1	502901	BUCKET DUMP PIPE
2	502902	BUCKET
3	203001	3" x 30" HYD. CYL.
4	401003	CHAIN GUARD
5	401004	REEL BAT ONLY
6	401005	REEL LESS BATS
	401006	REEL W/BATS COMPLETE
7	500101	APRON TYNE
8	502301	APRON LESS TYNES
	502302	APRON COMPLETE
9	500014	HITCH JACK
10	501001	HITCH
11	501905	3/4" x 4" x 6" U-CLAMP W/NUTS
12	101003	GEARBOX COMPLETE
13	401002	GEARBOX MOUNT
14	301013	11:00 x 15 TIRE
	301014	11L x 15 RIM 6-HOLE
15	400003	2" PILLOW BLOCK COMPLETE
16	801103	1/2" x 2 1/2" BOLT W/NUT UNF GRADE 8 (top)
	801104	1/2" x 3 1/2" BOLT W/NUT UNF GRADE 8 (bottom)

APRON

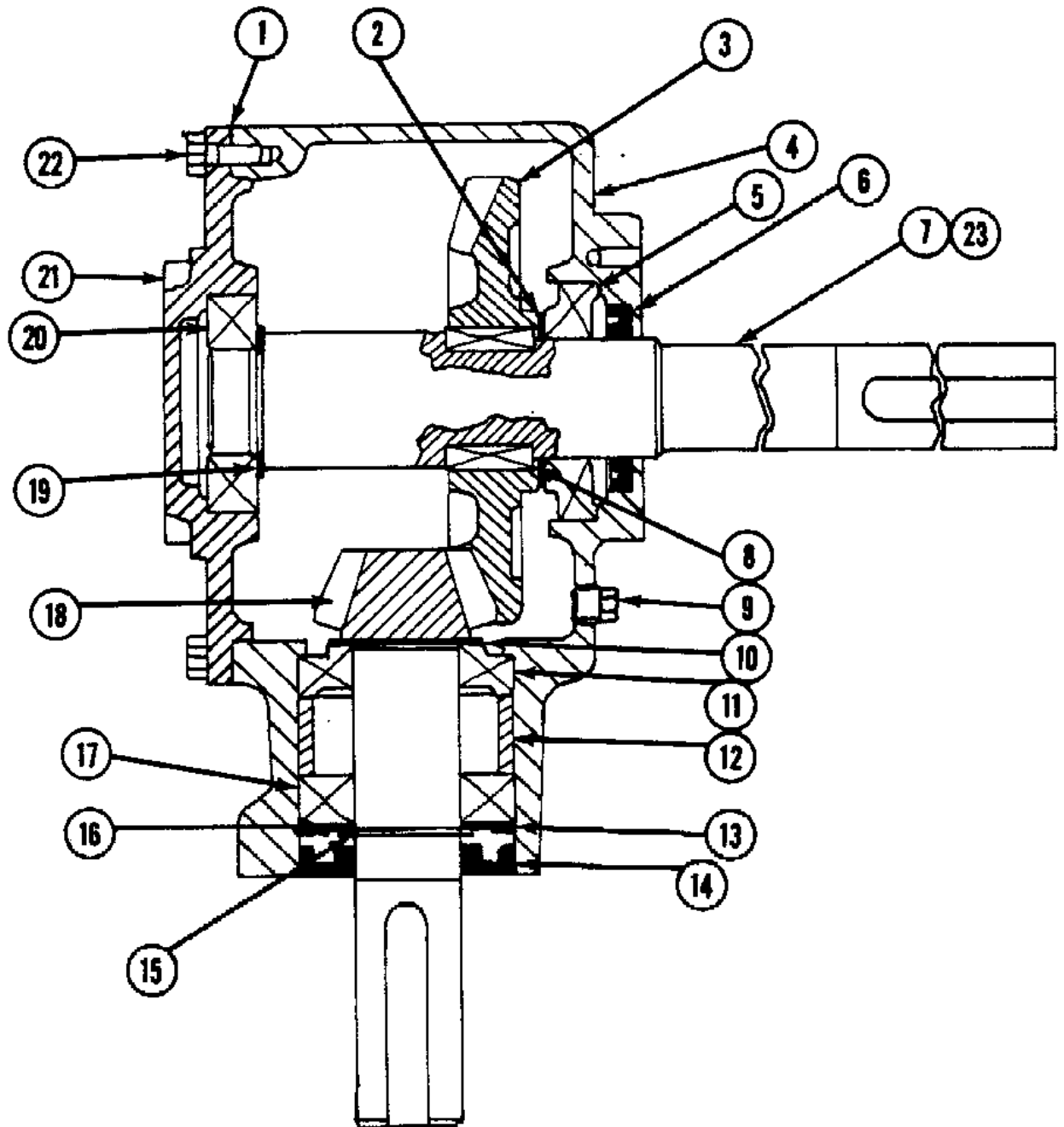
ROCK-MASTER



NO.	PART NO.	DESCRIPTION
1	500101	APRON TINE
2	801103	$\frac{1}{2}$ " x $2\frac{1}{2}$ " BOLT W/NUT UNF GRADE 8
3	502301	APRON FRAME LESS TINES
	502302	APRON FRAME COMPLETE W/TINES
4	801036	1" x $6\frac{1}{2}$ " BOLT W/NUT UNC
5	801104	$\frac{1}{2}$ " x $3\frac{1}{2}$ " BOLT W/NUT UNF GRADE 8

ROCK-MASTER

CÔMER SINGLE DRIVE GEARBOX

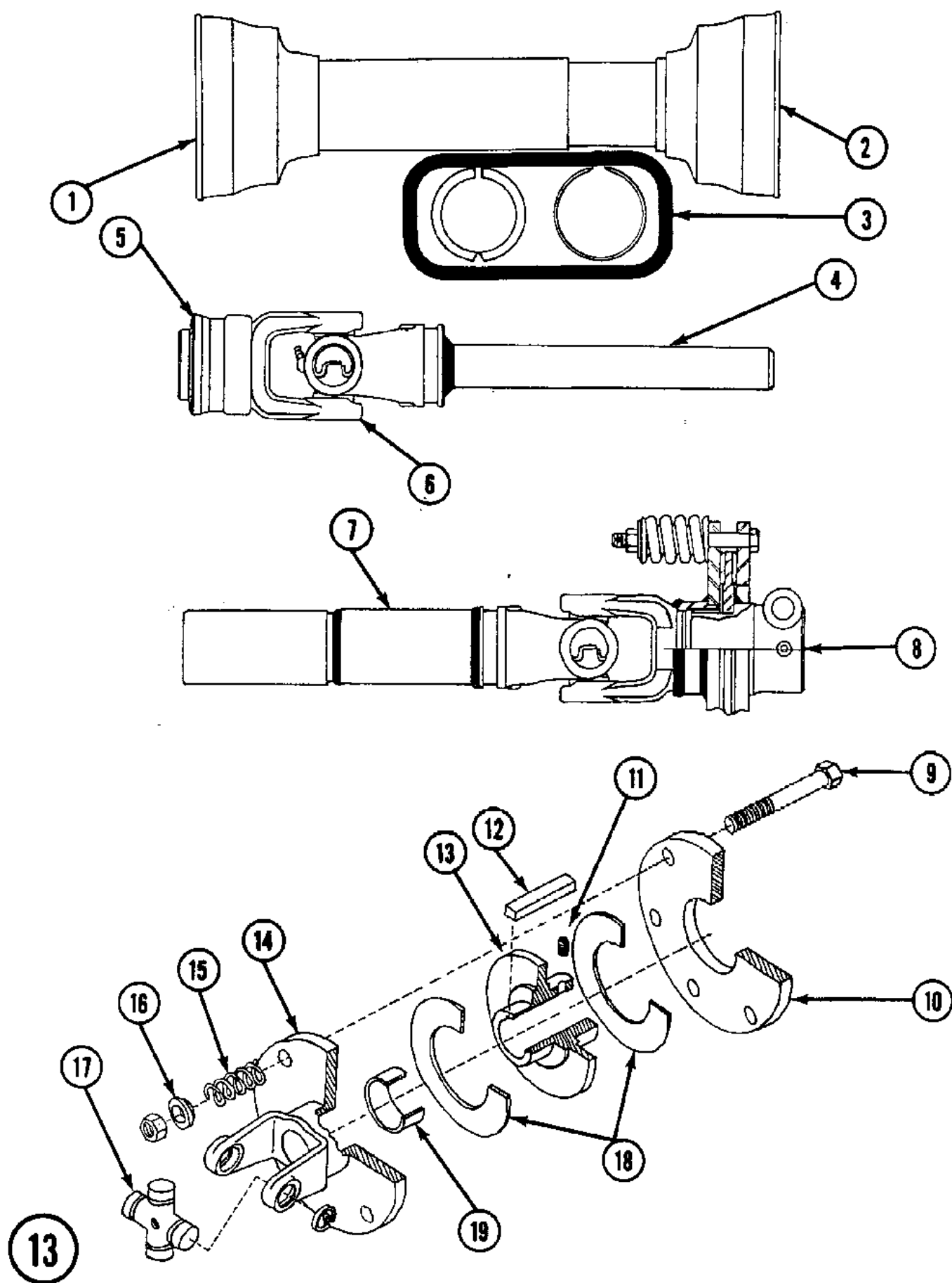


ROCK-MASTER

<u>NO.</u>	<u>PART NO.</u>	<u>DESCRIPTION</u>
1	100001	GASKET
2	100002	SHIM 40.3 x 51.5
3	100003	GEAR Z30 M5
4	100004	CASING
5	100005	30208 BEARING
6	100006	OIL SEAL
7	101001	1 3/8" x 25" SHAFT
8	100007	PARALLEL KEY 10 x 8 x 30
9	100008	1/2" PLUG
10	100009	SHIM 35.3 x 48
11	100010	30207 BEARING
12	100011	SPACER
13	100012	SNAP RING 72 UNI7437
14	100013	OIL SEAL
15	100014	SNAP RING 35 UNI7435
16	100009	SHIM 35.3 x 48
17	100015	6207 BEARING
18	100016	PINION GEAR Z10 M5
19	100009	SHIM 35.3 x 48
20	100015	6207 BEARING
21	100017	COVER
22	100018	BOLT M8 x 20 8.8
23	101002	1 3/8" x 8" SHAFT
24	101003	LONG SHAFT GEARBOX COMPLETE
25	101004	SHORT SHAFT GEARBOX COMPLETE

M4559 PTO SHAFT

ROCK-MASTER



ROCK-MASTER

<u>NO.</u>	<u>PART NO.</u>	<u>DESCRIPTION</u>
1	901010	OUTER GUARD
2	901011	INNER GUARD
3	901012	GUARD RETAINER KIT
4	901004	YOKE & SHAFT
5	901013	SPRING-LOK YOKE REPAIR KIT
6	901002	TRACTOR YOKE
7	901005	YOKE & TUBE
8	901016	6000 CLUTCH ONLY COMPLETE
9	901008	6000 CLUTCH BOLT W/NUT
10	900002	CLUTCH PRESSURE PLATE
11	801501	3/8-16 SET SCREW
12	801602	5/16 X 2 KEY
13	900001	CLUTCH HUB
14	901006	YOKE W/CLUTCH PLATE
15	901007	6000 CLUTCH SPRING
16	901009	6000 CLUTCH SPRING HOLDING WASHER
17	901003	14R JOURNAL KIT
18	900003	CLUTCH FRICTION DISC
19	900004	BRASS BUSHING
20	901014	TRACTOR HALF PTO SHAFT W/GUARD
21	901015	CLUTCH HALF PTO SHAFT W/GUARD
	901001	M4559 PTO COMPLETE

ROCK-MASTER

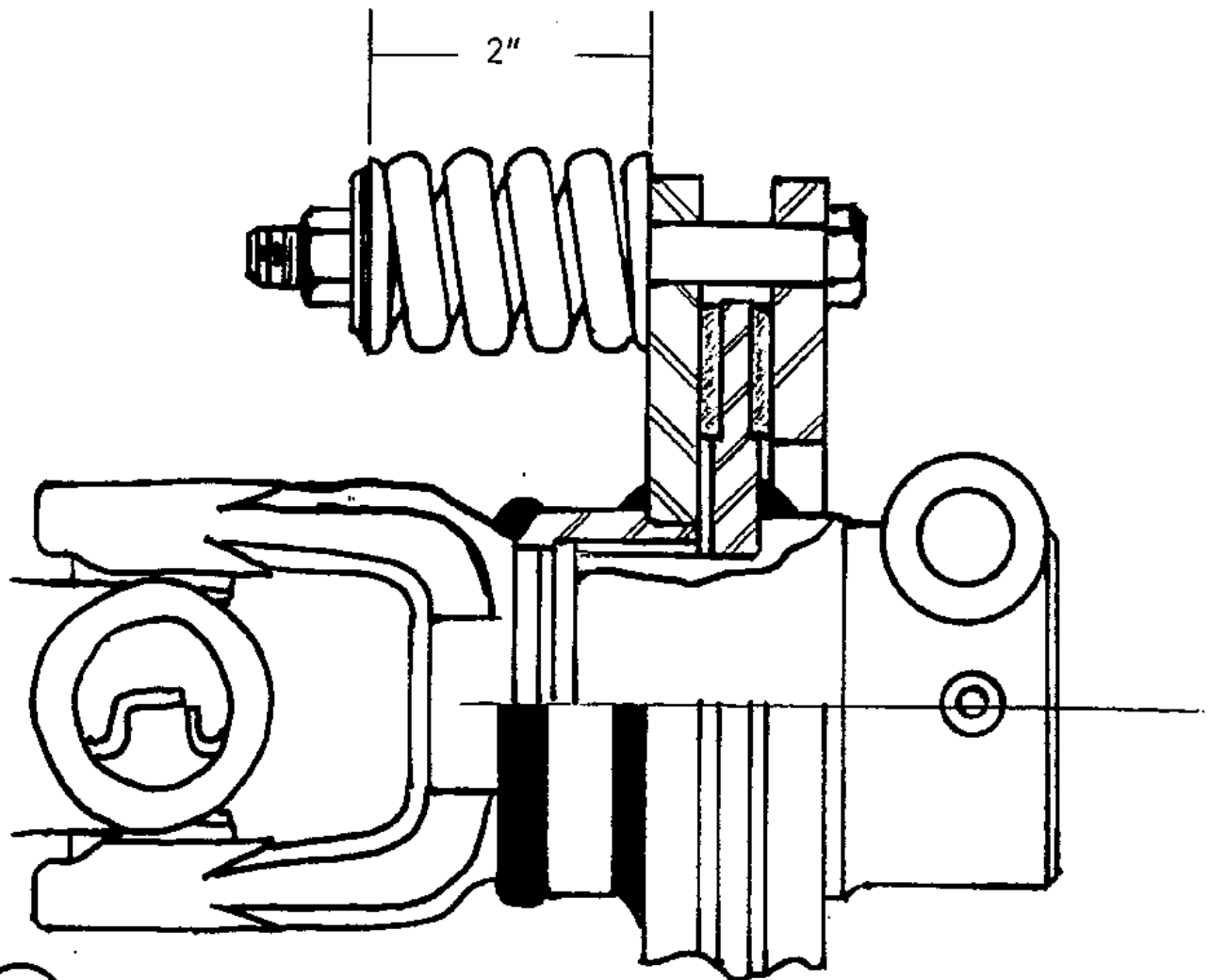
"6000 CLUTCH"

(MAIN DRIVE LINE PTO ON ALL ROCK PICKERS AND WINDROWERS)

STORAGE

WHEN YOUR MACHINE IS GOING TO BE INACTIVE ON A SEASONAL BASIS, IT IS ADVISED TO LOOSEN OR REMOVE THE CLUTCH FACINGS, TO AVOID RUST FORMING AND MAKING THEM INOPERATIVE.

"REMEMBER" TO TORQUE THE BOLTS TO THE REQUIRED LENGHT AS SHOWN BELOW.



"IMPORTANT"

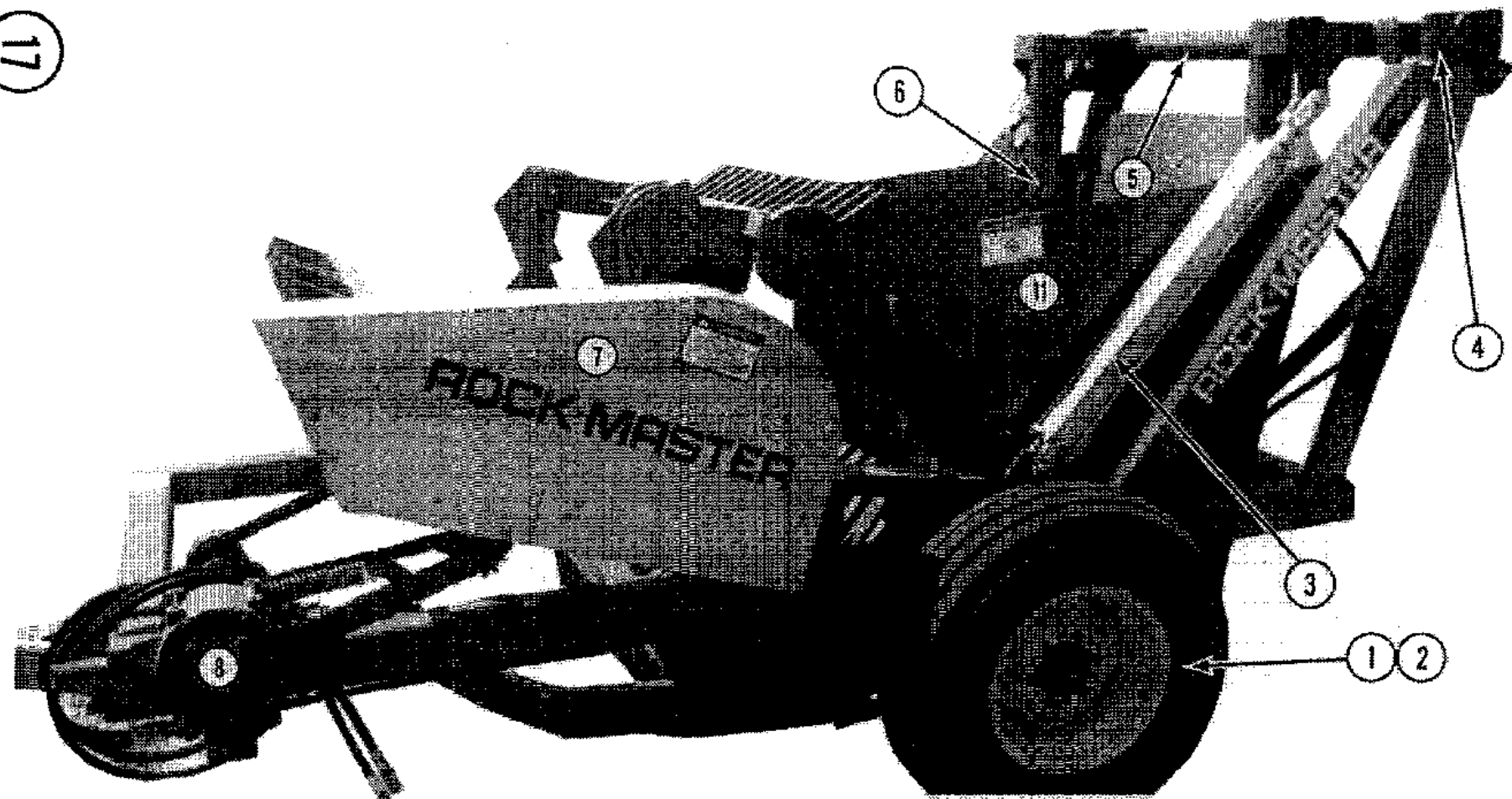
"6000 & 9000 CLUTCH"

OPERATING & MAINTENANCE INSTRUCTIONS

- 1) ATMOSPHERIC CONDITIONS AND PROLONGED STORAGE MAY ALTER THE OPERATING CHARACTERISTICS OF FRICTION CLUTCHES. BEFORE FIRST USE OR AFTER STORAGE OF MORE THAN ONE MONTH ALL SPRING ADJUSTING NUTS SHOULD BE BACKED OFF UNTIL SPRINGS ARE JUST LOOSE, THEN TIGHTENED ONE TURN.
- 2) THE CLUTCH SHOULD THEN BE SLIPPED UNTIL IT STARTS TO SMOKE. THE SPRINGS SHOULD THEN BE SET TO THE DESIRED SPRING SETTING. SET ALL SPRINGS TO THE SAME LENGTH.
NOTE THAT AFTER A CLUTCH HAS BEEN "RUN IN" IT WILL SLIP ABOUT 20% HIGHER THAN BEFORE.
- 3) THE TEMPERATURE OF THE CLUTCH SHOULD BE CHECKED OFTEN DURING THE FIRST 20 MIN. OF OPERATION AND ABOUT EVERY 8 HRS. THEREAFTER. IF CLUTCH SMOKES, OR IS TOO HOT TO TOUCH (140°F. PROX.-DON'T BURN YOURSELF), THE SPRINGS SHOULD BE TIGHTENED OR THE CLUTCH WILL BURN UP AND FAIL.
- 4) SOME CLUTCHES MAY HAVE A SPRING STOP INSIDE THE SPRING TO PREVENT TIGHTENING THE SPRING BEYOND A PRESET LENGTH.
CAUTION ! IF ATTEMPT IS MADE TO TIGHTEN THE SPRING BEYOND THE PRESET LENGTH, THE BOLT MAY BREAK AND THE SPRING WILL THE FASTENER FLY OFF.

ROCK-MASTER

17

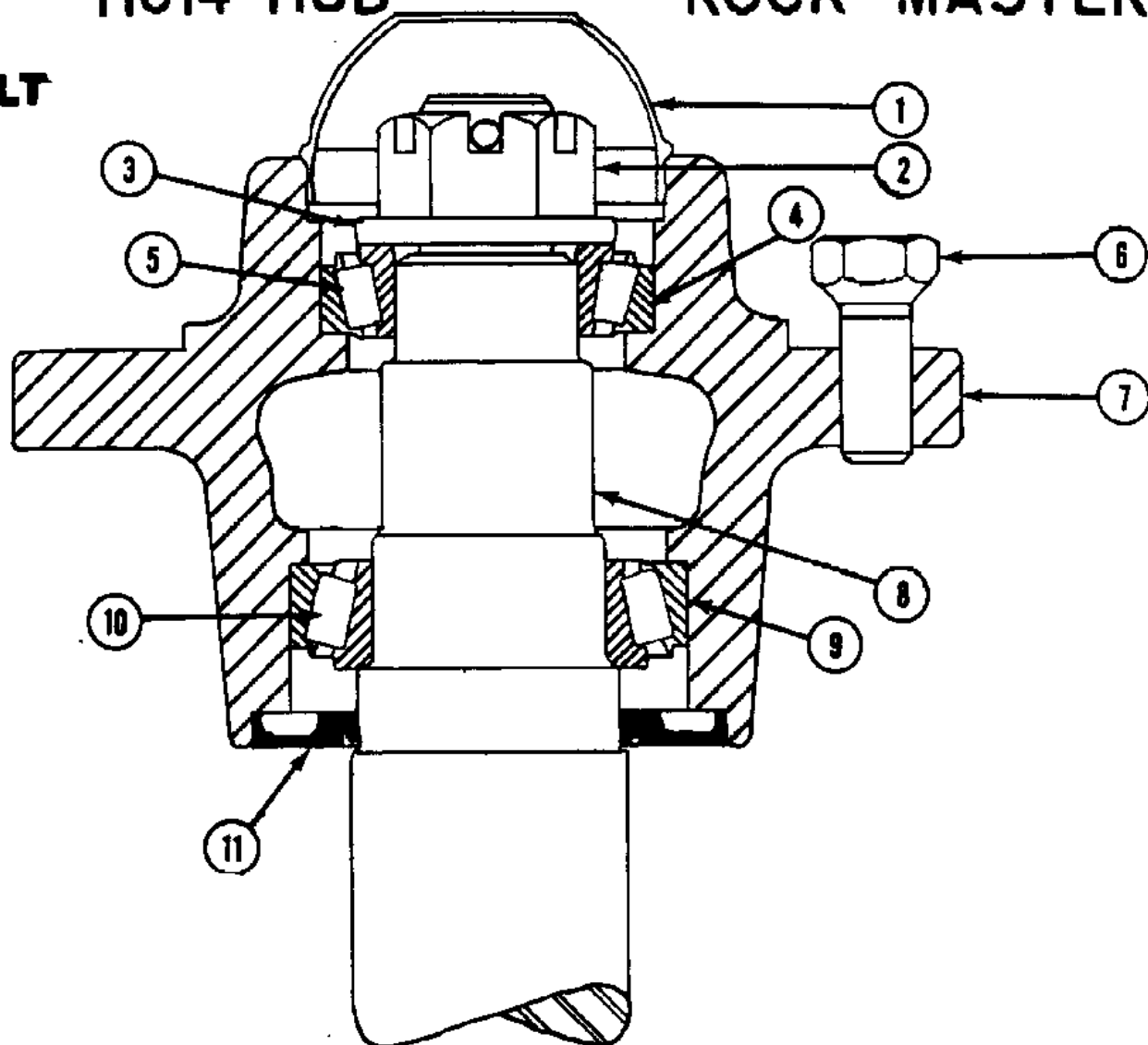


NO.	PART NO.	DESCRIPTION
1	301013	11L x 15 TIRE
2	301014	11:00 x 15 RIM
3	203001	2" x 30" HYD. CYL.
4	500201	PIPE CLAMP (2 req.)
5	502901	BUCKET DUMP PIPE
6	801007	1" x 4 1/2" UNC BOLT W/NUT
7	401003	CHAIN GUARD
8	101003	LONG SHAFT GEARBOX COMPLETE
9	601003	3/8" x 96" TRACTOR HOSE
10	601217	MALE PIONEER TIPS
11	502902	BUCKET COMPLETE

H614 HUB

ROCK-MASTER

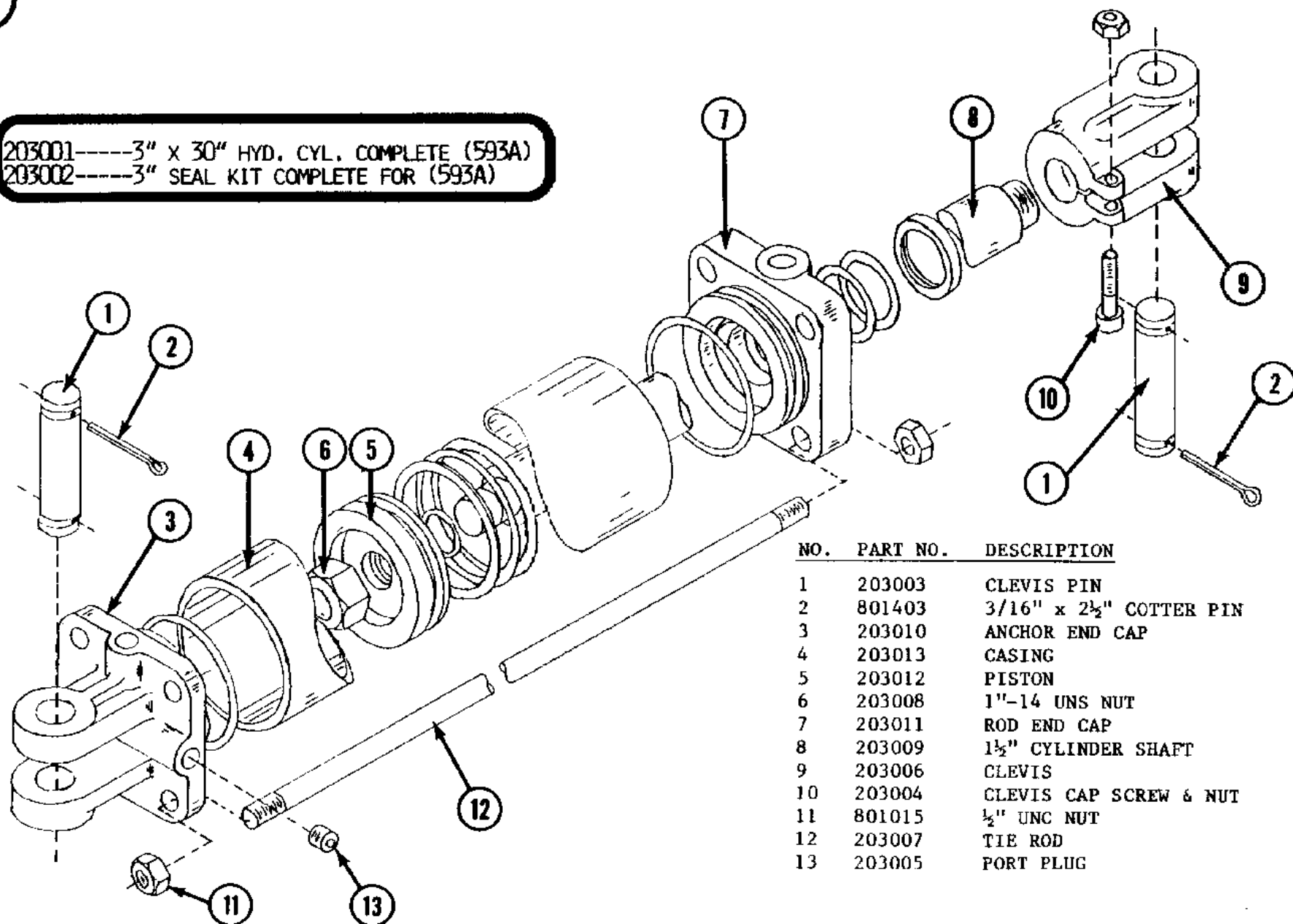
6-BOLT



NO.	PART NO.	DESCRIPTION
1	301001	DC15 DUST CAP
2	301002	CASTELLATED NUT 1"- 14 UNS
3	301003	WA17 WASHER 1" I.D. x 2" O.D.
4	301004	LM48510 OUTER CUP
5	301005	LM48548 OUTER CONE
6	301006	WB12 WHEEL BOLT 9/16" - 18 UNF x 1 1/4"
7	301007	H614 HUB
8	301008	SE16 SPINDLE ONLY
9	301009	LM603012 INNER CUP
10	301010	LM603049 INNER CONE
11	301011	SE16 GREASE SEAL

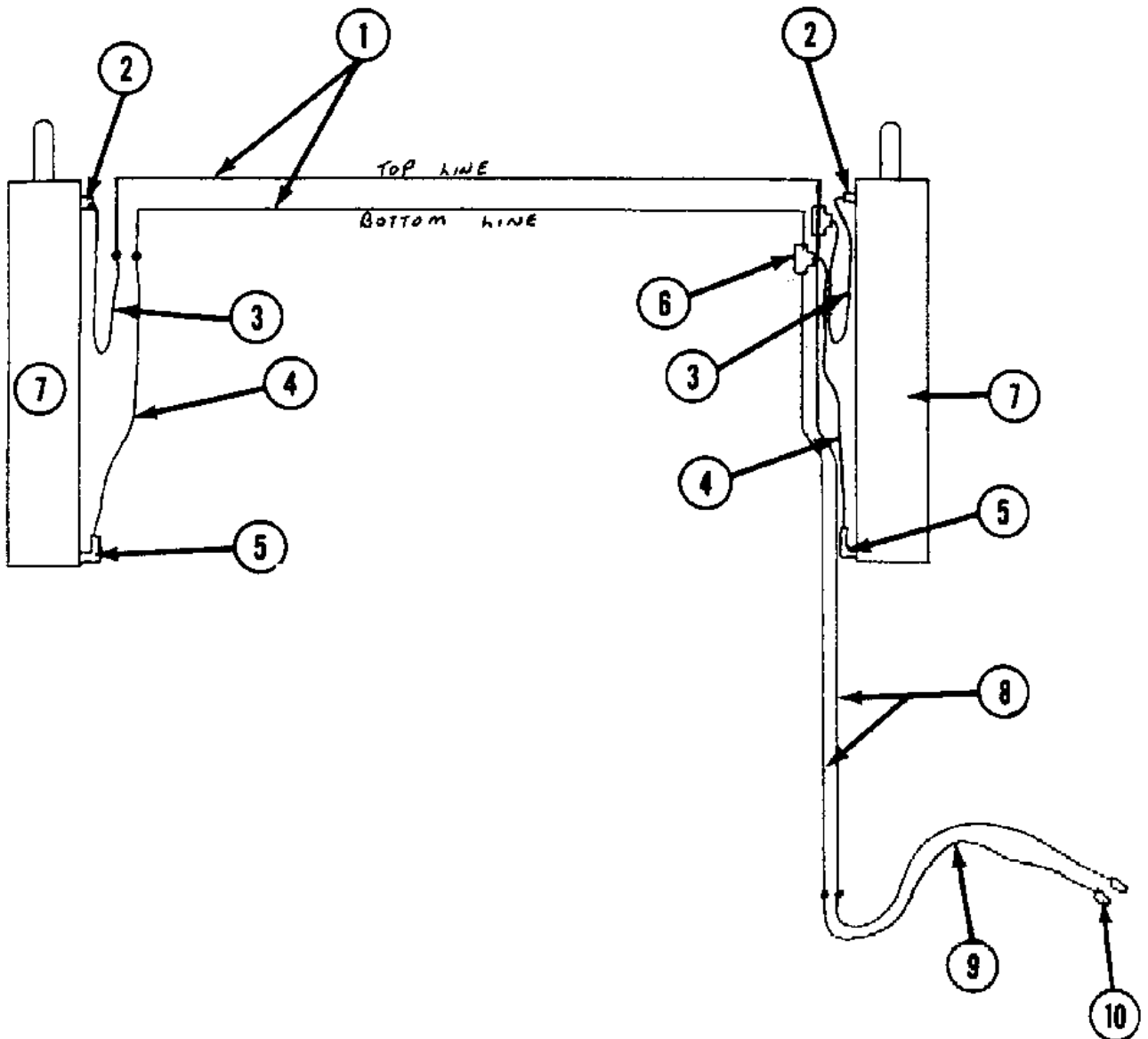
ROCK-MASTER

203001-----3" x 30" HYD. CYL. COMPLETE (593A)
 203002-----3" SEAL KIT COMPLETE FOR (593A)



NO.	PART NO.	DESCRIPTION
1	203003	CLEVIS PIN
2	801403	3/16" x 2½" COTTER PIN
3	203010	ANCHOR END CAP
4	203013	CASING
5	203012	PISTON
6	203008	1"-14 UNS NUT
7	203011	ROD END CAP
8	203009	1½" CYLINDER SHAFT
9	203006	CLEVIS
10	203004	CLEVIS CAP SCREW & NUT
11	801015	½" UNC NUT
12	203007	TIE ROD
13	203005	PORT PLUG

ROCK-MASTER



NO.	PART NO.	DESCRIPTION
1	601102	60" HYD. TUBING
2	601212	848-FS-08x08 FITTING
3	601006	3/8" x 40" HYD. HOSE
4	601016	3/8" x 27" HYD. HOSE
5	601218	849-FS-08x08 FITTING
6	601208	872-FS-08 TEE
7	203002	3" x 30" HYD. CYL.
8	601118	95" HYD. TUBING
9	601003	3/8" x 96" HYD. HOSE
10	601217	PIONEER MALE TIPS

ROUTINE MAINTENANCE

- PERIODICALLY CHECK AIR PRESSURE IN TIRES AS UNEQUAL PRESSURE WOULD MAKE IT PRACTICALLY IMPOSSIBLE TO LEVEL MACHINE PROPERLY.
- CHECK OIL IN GEARBOX AND ADD #90 GEAR OIL IF NEEDED.
- CHECK WHEEL BOLTS FOR TIGHTNESS.
- CHECK ALL BOLTS FOR TIGHTNESS.
- CHECK HYD. HOSE AND TUBING CONNECTIONS.
- CHECK CHAIN TIGHTENER.
- TIGHTEN ALL SET SCREWS.

SPECIFICATIONS

PICKING WIDTH.....	4'2"
DUMP HEIGHT.....	6'6"
TIRES.....	11L x 15
CYLINDERS.....	3" x 30"
CHAIN & SPROCKETS.....	NO. 80
PTO DRIVE.....	540 STD.
HYDRAULIC PRESSURE.....	2500 PSI.
BUCKET CAPACITY.....	3/4 CU. YD.

DANGER

ANY PETROLEUM PRODUCT UNDER PRESSURE CAN INFILTRATE THE SKIN CAUSING SERIOUS AFTER EFFECTS. IF THIS SHOULD HAPPEN, APPLY COLD PACKS TO THE AFFECTED AREA AND SEE A DOCTOR IMMEDIATLY.

GREASE DAILY

- BOGEY WHEEL BEARINGS (6)
- DUMP PIPE BRACKETS (2)
- PTO UNIVERSAL JOINTS

CHECK DAILY

- ALL HYD. HOSES AND TUBINGS FOR LEAKS AND WEAR
- ALL HYD. CYLS FOR LEAKS
- TIRES FOR CORRECT AIR PRESSURE, CUTS OR NICKS
- ALL DRIVE CHAINS

WARNING

NEVER TRY TO RELEASE OR REMOVE STONES DTUCK BETWEEN THE REEL
BATS AND TINES FROM INSIDE THE FRAME OR BUCKET.

USE IF POSSIBLE A CHAIN, A LONG BAR OR PIECE OF WOOD, FROM
THE OUTSIDE OF THE PICKER.

BATS COULD BE UNDER TENSION & ONCE RELEASED COULD CAUSE SERIOUS
BODILY INJURY.

"REMEMBER": DON'T FORGET TO DISENGAGE THE PTO.

PLEASE BE SAFE, YOUR FAMILY IS WAITING FOR YOU.