



BM H-4250 BALEMOVER

**ASSEMBLY • OPERATOR • PARTS MANUAL**

Serial Number H4345 to H4420

February 1989

NOTE-SINGLE ELECTRICAL HYDRAULICS

START AT SERIALX \*4346

Serial Number H4345 to H4420  
February 1989

P.O. BOX 85  
LAURIER, MANITOBA  
R0J 1A0  
204-447-2245

TO THE OWNER:

Congratulations on the purchase of your new LAURIER 12 BALE MOVER.

Constructed of the finest quality materials, your LAURIER 12 BALE MOVER is engineered and designed to do normal operations effectively and efficiently, and to provide you with years of dependable service.

Be sure to read the instructions in this manual for adjusting and operating your LAURIER 12 BALE MOVER. A few moments to acquaint yourself with the LAURIER 12 BALE MOVER and its maintenance requirements will save you precious time in the field and protect your machinery investment. Should you in time, need replacement parts, please consult the parts list in this manual, and contact your LAURIER DEALER.

LAURIER MANUFACTURING LIMITED

**NOTE:**

**Single Electrical Hydraulics  
Starts At SERIAL #4346**

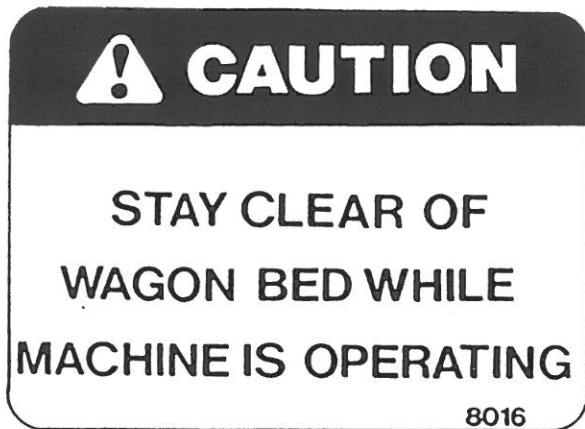
It is the policy of LAURIER MANUFACTURING LIMITED to improve its products whenever it is possible and practical. We reserve the right to make changes or add improvements, at any time, without incurring any obligation to make such changes on machines previously sold.



## TABLE OF CONTENTS

<u>ITEM</u>	<u>PAGE</u>
Letter to Owner .....	
Policy .....	
Safety .....	1
Specifications .....	2
Assembly .....	3
Operation .....	19
Trouble Shooting .....	20
 Parts Catalogue .....	 24
Parts Index .....	45
Warranty .....	

# SAFETY



LEFT SIDE OF FRONT SUB FRAME



RIGHT SIDE OF FRONT SUB FRAME



ON OUTSIDE BED RAILING



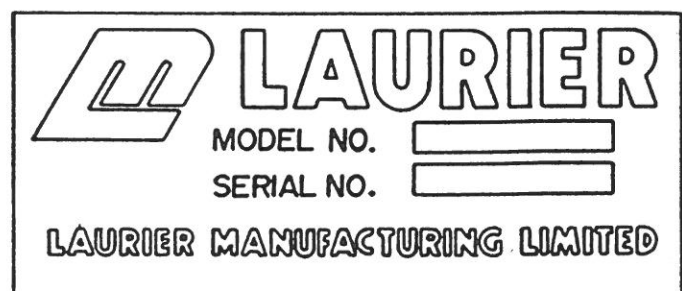
RIGHT SIDE OF FRONT SUB FRAME



LEFT SIDE OF FRONT SUB FRAME



ON RIGHT A-FRAME HITCH



ON HITCH CROSS MEMBER

# SPECIFICATIONS

LAURIER

SHIPPING WEIGHT -----6500 lbs.

TOTAL LENGTH -----41 feet

BED LENGTH -----33 feet

TOTAL WIDTH -----14'2"

BED WIDTH -----11'

TOTAL HEIGHT -----9'2"

BED HEIGHT -----2'8"

GROUND CLEARANCE -----14"

MAXIMUM CAPACITY -----12 - 5½' 1500 lbs Bales

CONVEYOR CHAIN -----Heavy Duty ASA 2062 1 1/2 Pitch

TIRES ----- 8 - 9.5L x 15 x 8 ply c/w tube & 40 PSI Highway Service

UNDERCARRIAGE -- 2 four wheel oscillating tandems

# ASSEMBLY

## 1. SITE SELECTION

Prior to assembly, select an area which is clean, level and large enough to accomodate assembled Bale Mover.

## 2. ORIENTATION

Left and right are determined when standing behind the machine facing the direction of travel.

## 3. REQUIRED TOOLS AND EQUIPMENT

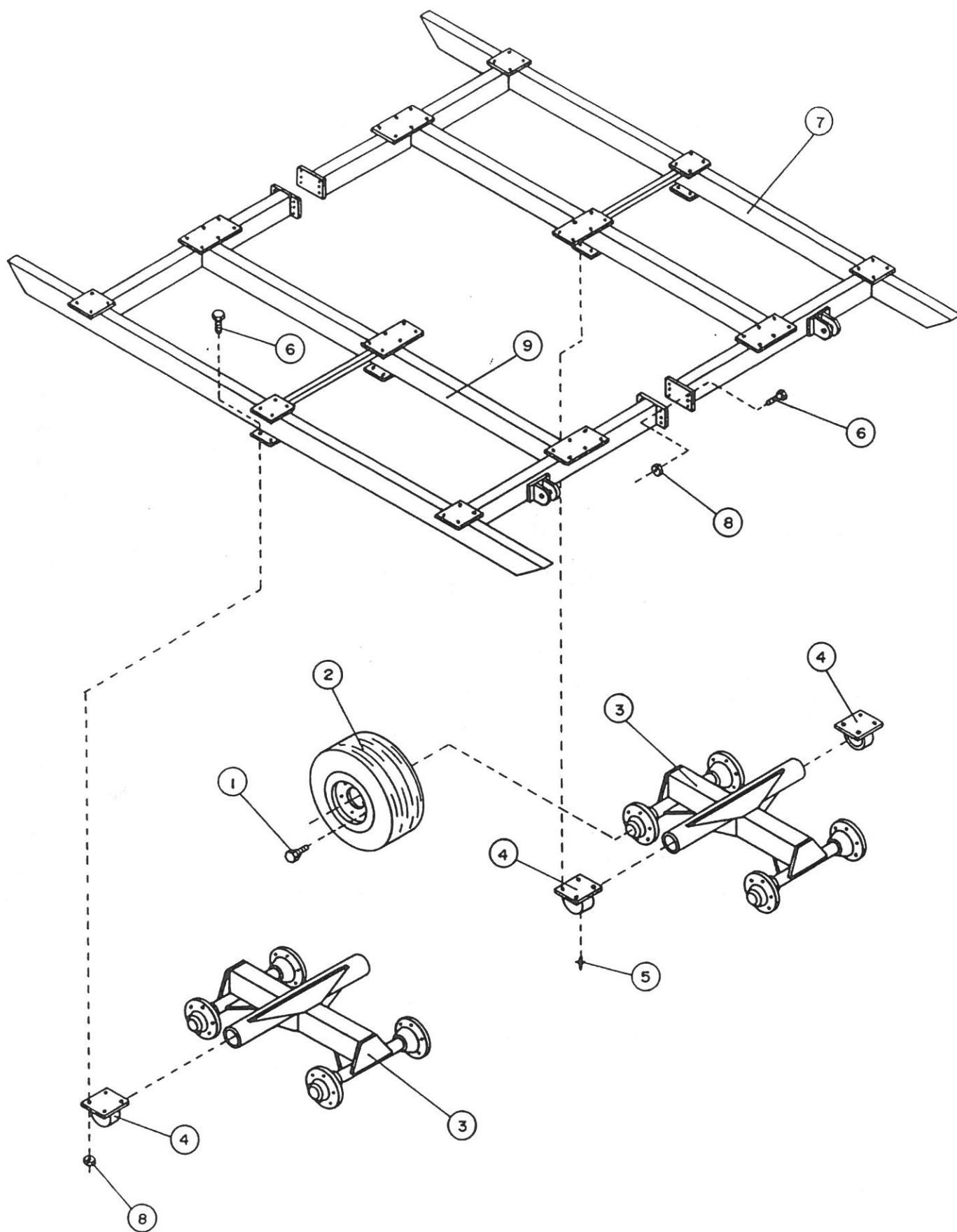
Before beginning assembly of the Bale Mover, have the following equipment on hand:

1. Fork lift or hoisting equipment with lifting capacity of 500 lbs.
2. Wrenches: 1/2, 9/16, 3/4, 7/8, 15/16, 1, 1 1/4".
3. Wire cutters
4. Pliers
5. Ball peen hammer
6. Pry Bar
7. Aligning bar

CAUTION: SOME BALE MOVER COMPONENTS ARE EXTREMELY HEAVY.  
HAVE HOISTING EQUIPMENT AVAILABLE WITH A LIFTING  
CAPACITY OF 500 POUNDS FOR ASSEMBLY OF PARTS.

4. Open packing case and check contents against parts list in this book.
5. Before beginning to assemble Bale-Mover ensure that all parts are accounted. Check against parts list in this book.

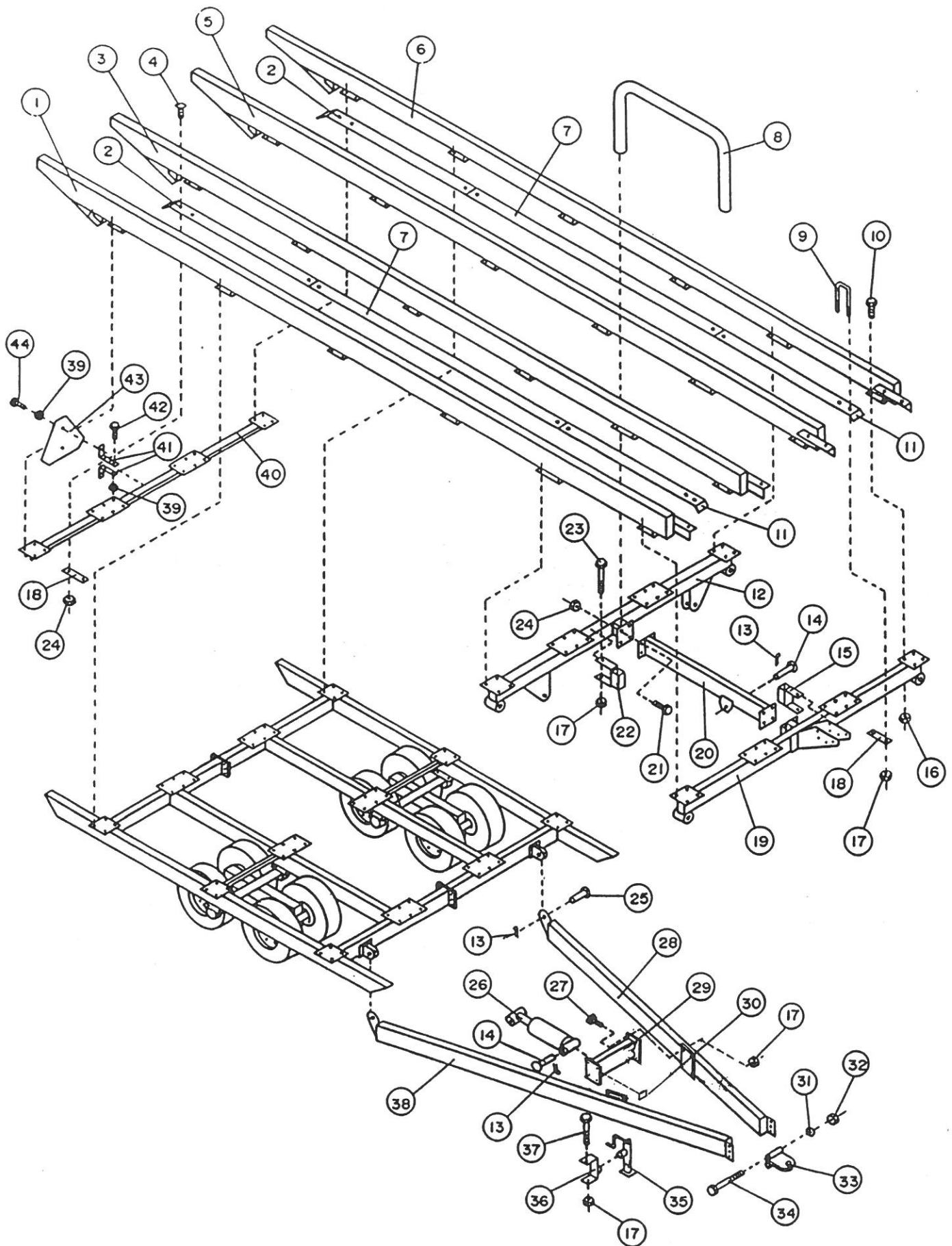
Lined paper for notes, featuring horizontal ruling lines across the page.



ASSEMBLY OF OSCILLATING TANDEMS TO SUB FRAME

To assemble oscillating tandems to sub frame.

With sub frame bolted together, raise one end of frame with enough clearance to roll complete tandem axle with wheels and pockets mounted. Line up to sub frame plate and fasten with 1/2" x 1 1/2" bolt and locknut. Install grease nipple #5.





A-FRAME HITCH TO SUB FRAME

1. Position Right #38 and Left #28 A-Frame Hitches to sub frames. Secure with 1 1/4" x 3" pins #25 and cotter pins #13.
2. Assemble hitch cross member #29 to left and right hitches with 1/2" x 1 1/2" bolt #27 and locknut #17.  
Do not tighten bolts until hitch plate is on.  
NOTE: CROSS MEMBER BOLTS IN FRONT OF BRACKET ON HITCH.  
CAUTION: WHEN BOLTING PREASSEMBLED VALVE ASSEMBLY TO HITCH CROSS MEMBER, EXTREME CAUTION MUST BE TAKEN SO AS NOT TO DAMAGE HOSES OR LINES.
3. Install hitch plate #33 in lower holes to left and right hitches using 1" x 7 1/2" bolt #34, lockwasher #31 and nut #32.
4. Tighten bolts on hitch cross member.
5. Install hitch jack #35 to right A-Frame hitch approximately 33" from front of hitch. Fasten with 1/2" x 9 1/2" bolt #37 and locknut #17.

INSTALLATION OF RAILS

NOTE: Rails are identified by part numbers painted on front of rails.

#1 Outside Right	Part #40033
#3 Inside Right	Part #40034
#5 Inside Left	Part #40035
#6 Outside Left	Part #40036

1. With hoisting equipment, place rails on sub frame and fasten with 3/8" x 1" bolt #10 and locknut # 6.
2. For inside rails place them closest to the outside frame, on bolting plates. Secure them with 3/8" x 1" bolt #10 and locknut #16.

CAUTION: DUE TO LENGTH OF RAILS, TO AVOID DAMAGE AND PERSONAL INJURY, CAUTION SHOULD BE EXERCISED WHEN LIFTING MEMBERS INTO PLACE.

INSTALLATION OF 4 x 6 CROSS MEMBER

1. Place 4 x 6 cross member #12 onto A-Frame hitch with square pocket towards front. Secure to bolting plates on rails with 3/8" x 1" bolts #10 and locknut #16.

INSTALLATION OF 3 x 6 CROSS MEMBER

NOTE: To install 3 x 6 cross member left A-Frame hitch in a horizontal position with the sub frame. This will facilitate installation of rails.

2. Place bale divider tube #20 in between #12 and #19 cross members. Fasten with 7/16" x 1 1/4" bolts. Cylinder lug should be 24" from front plate.
3. Install grease fittings to cross members.

LAURIER

INSTALLATION OF CHANNEL CROSS MEMBER

1. Place channel cross member #40 under rails with bolting plates upwards. Secure to plates on rails with 3/8" x 1" bolt #10 and locknut #16.
2. Bolt slow moving vehicle sign #43 to brackets #41 to centre of cross member #40 with 1/4" x 2 1/4" bolt.

INSTALLATIONS OF BALE SLIDES

1. Install front #11 and middle bale slide #7 between bale rails approximately on centre. Fasten with 1/2" x 3 1/8" x 7" U-Bolts #9, backing plate #18 and locknut #17.
2. Install rear bale slide #2 also in centre of rails. Secure to middle bale slide with U-Bolts, backing plates and locknut. Secure to channel cross member with 7/16" x 2 1/2" carriage bolt #4, backing plate #18 and locknut #17.

INSTALLATION OF BALE DIVIDER

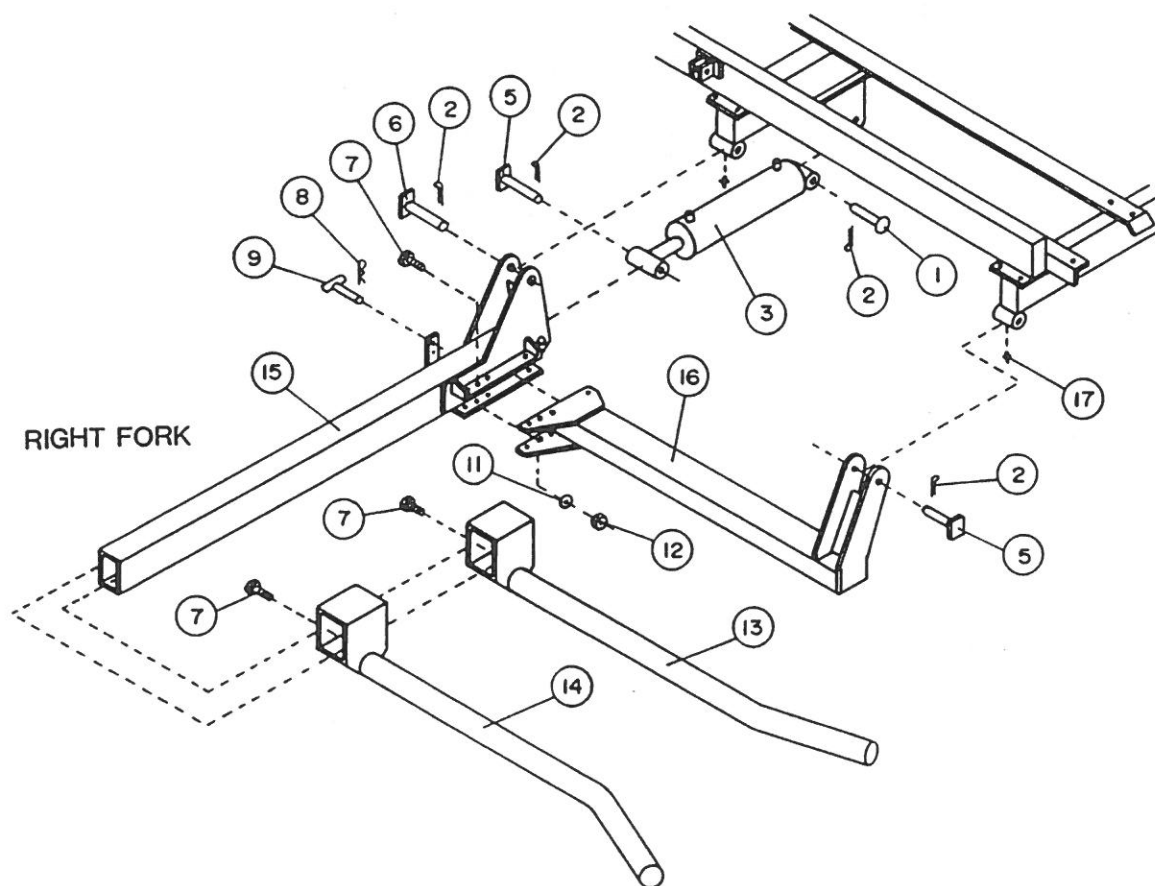
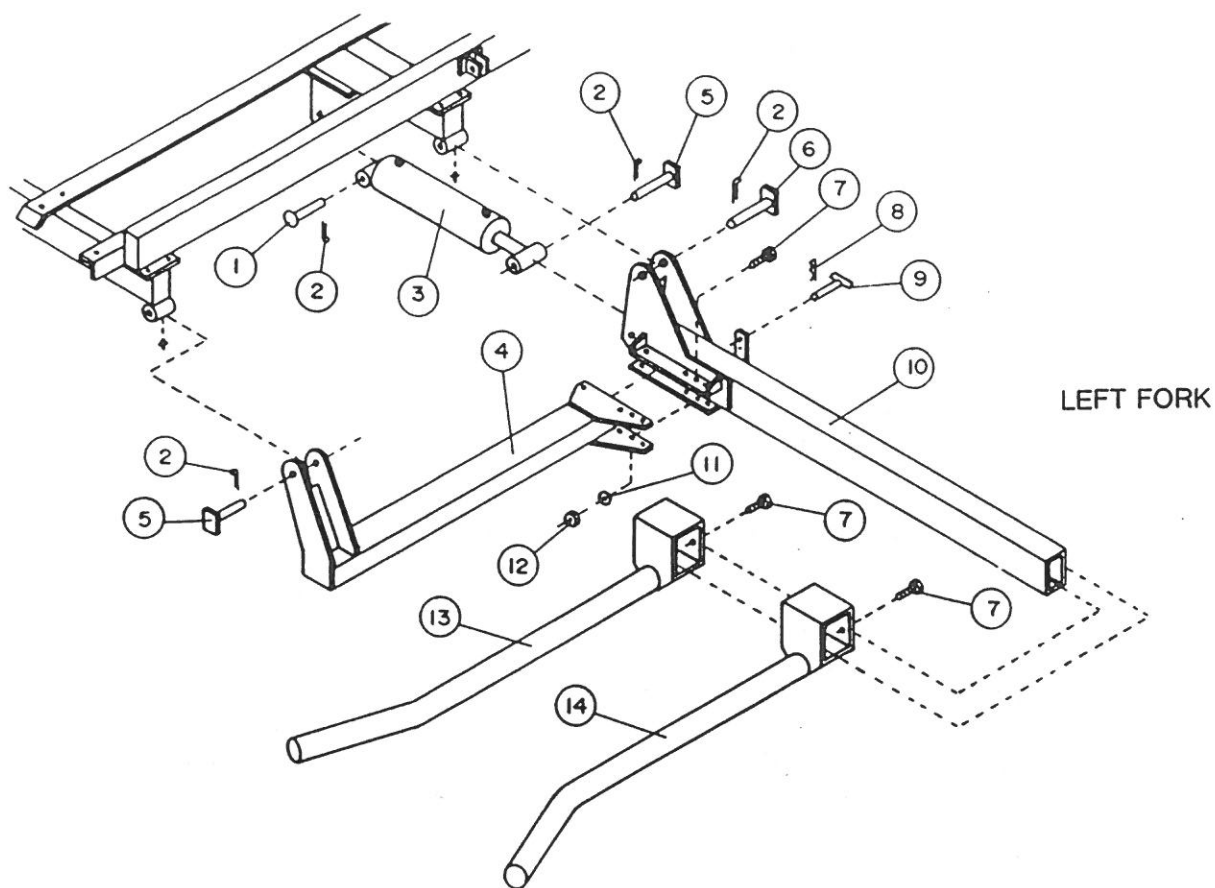
1. Place 1 bale divider #8 in pockets of 3 x 6 cross member #19 and 4 x 6 cross member #12 only for larger round bales.
2. For smaller round bales, place 2 bale divider #8 in pockets of bolt on 3 x 6 bale divider holder #15 and bolt on 4 x 6 bale divider holder #22.

INSTALLATION OF TILT CYLINDER

1. Install 3" x 16" cylinder #26 to A-Frame hitch cross member #29. Secure base plate end to cross member with 1" x 6" pin #14 and cotter pin #13. Make sure port holes are in down position.

NOTE: Restricted elbow should be installed in bottom port of cylinder.

# FORK ASSEMBLY





INSTALLATION OF BALE FORK FRAME TO SUB FRAME

1. Place pivot slide arm left #10, part #40017 and right #15, part #40018 under 4 x 6 cross member. Secure slide arm to cross member with 1 1/4" x 5 3/4" pin #6 and cotter pin #2.
2. Place pivot arm left #4, part #40011 and right #16, part #40012 under 3 x 6 cross member. Secure pivot arm to cross member with 1" x 5 3/4" pin #5 and cotter pin #2. Secure right slide arm to right pivot arm with 5/8" x 1 1/2" bolt #7, lockwasher #11 and nut #12. Doing the same to left slide arm and left pivot arm.

INSTALLATION OF FORK TEETH

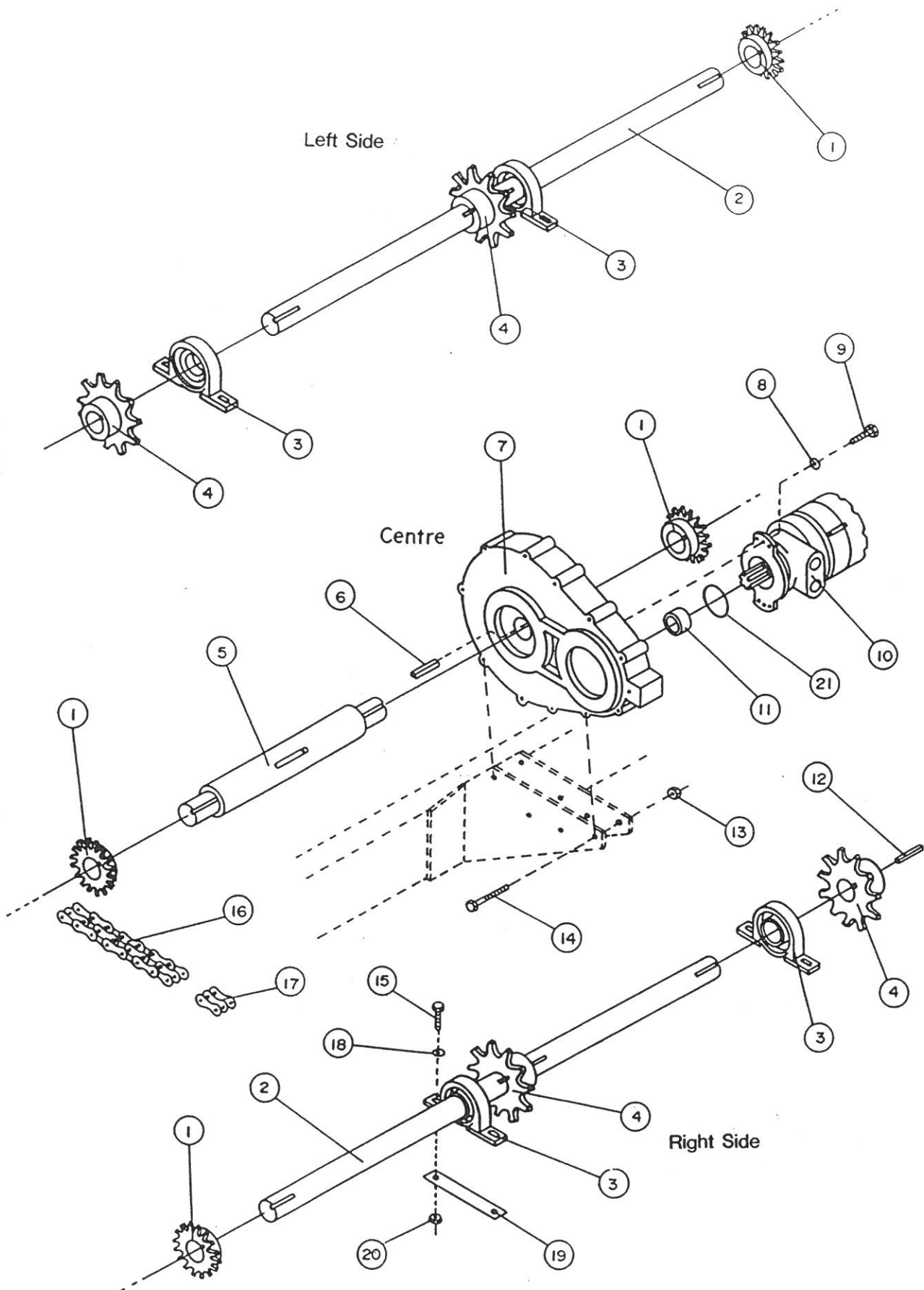
1. Lift and block pivot slide arm about four to six inches above the ground. Slide left fork #13, part #40023 onto the frame. Tighten 5/8" x 1 1/2" bolt #7. Next slide front fork #14, part #40022 onto the frame. Tighten 5/8" x 1 1/2" bolt #7.
2. To adjust fork teeth place fork in locked transport position. Adjust inside fork tooth 6" higher than outside rail. Tighten bolts. Depending on bale size and conditions adjust outside fork tooth to suit round bale.

FORK CYLINDER INSTALLATION

1. Secure 3 1/2" x 13" cylinder #3, base plate of cylinder in cylinder gussets on 4 x 6 cross member. Secure with 1" x 6" pin #1 and cotter pin #2. Ports to be upward.
2. Install cylinder to pivot slide arm and secure with 1" x 5 3/4" pin #5 and cotter pin #2.

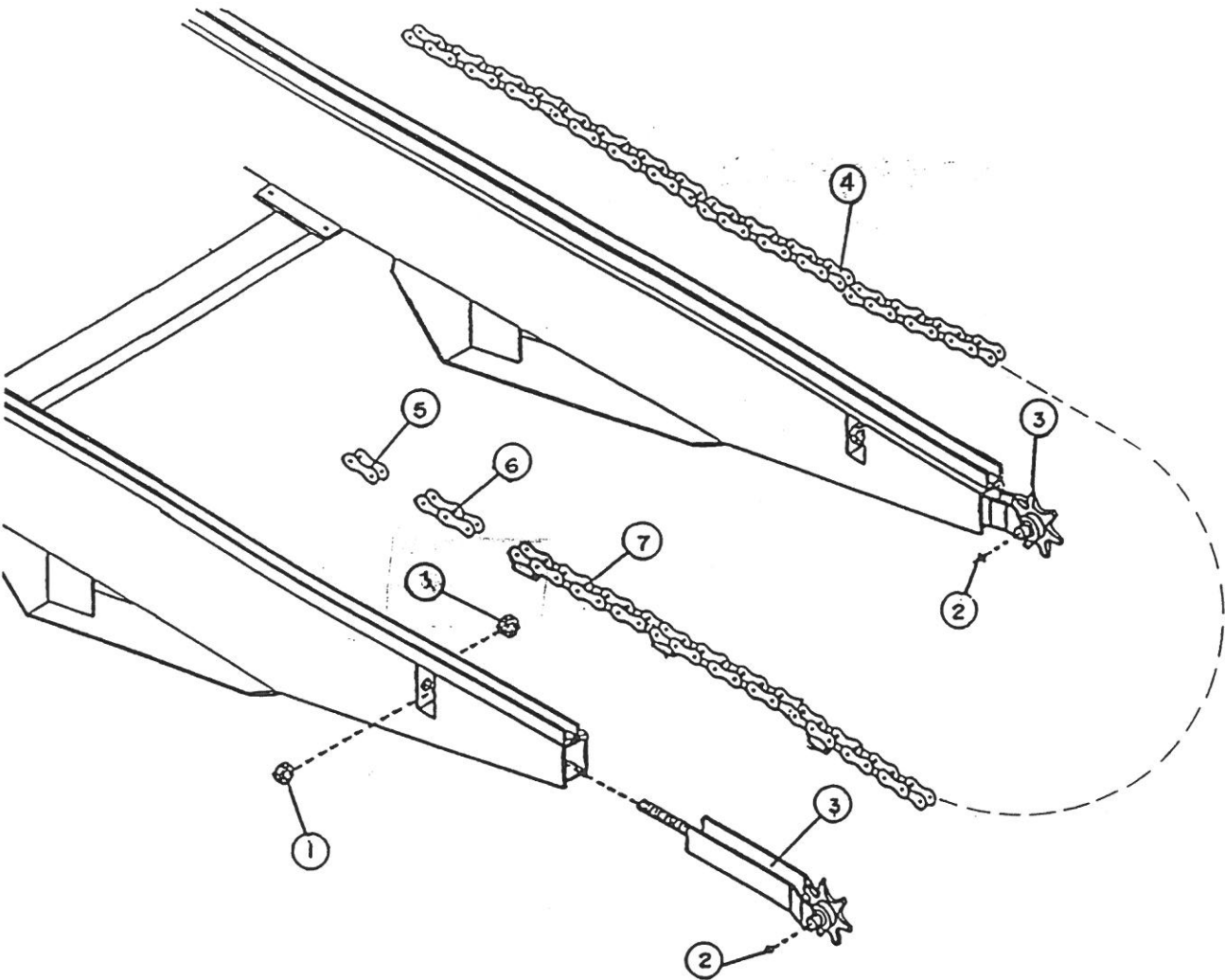
NOTE: Install restricted elbow to rod end of cylinder.

## GEAR BOX AND SHAFT ASSEMBLY



INSTALLATION OF GEAR BOX

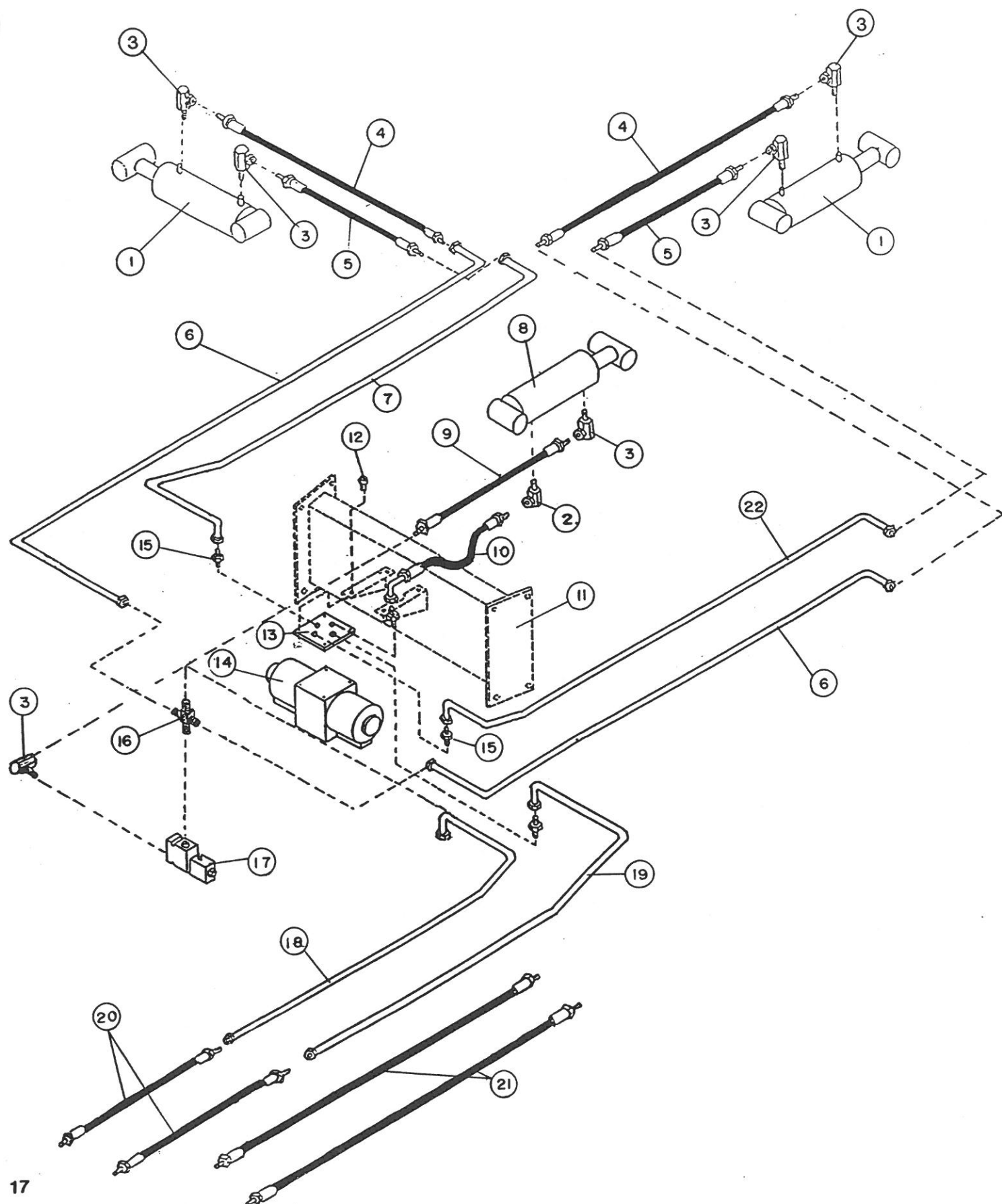
1. Place left and right shaft assemblies on proper sides of Bale Mover.
2. Bolt gear box to gussets on 3 x 6 cross member with holes as shown on opposite page. Secure with 5/16" x 4 1/2" bolt #14 and locknut #13. This also comes assembled with items #1, #5, #6, & #7.
3. Fasten chain #16 to coupler sprocket #1 on right side to coupler sprocket on gear box shaft. Doing the same on left side of gear box.
4. If shafts on left or right side are not running straight, place pillow block shims #19 under pillow blocks #3 until they run straight. Secure pillow blocks with 1/2" x 2" bolt #15, flatwasher #18 and locknut #20.





ROLLER CHAIN INSTALLATION

1. To install roller chains , refer to drawing on opposite page.
2. Thread all chain tighteners with 5/8" nut #1. Slide chain tighteners into rail and tighten with 5/8" locknut #4 other side of plate.
3. Insert into entire length of rail either fish line or 1/4" rod. Unroll chain length #7 on the rail channel from the rear, unrolling towards the front. Fasten the roller chain to the fish line and proceed to pull chain through. Unroll #8 roller chain on top of rails. Secure both ends with a connecting link #6 or half link #5.
4. To adjust the roller chain on each rail, grasp the chain on centre and lift. The chain should have an 8" lift. To adjust, move chain tightener in direction which is needed.



INSTALLATION of HYDRAULIC HOSE AND LINES

NOTE: When finished installing hydraulic hoses and lines to preassembled valve assembly, make sure to follow set-up as shown on opposite page. If set-up is done improper, hydraulic will not work.

1. Install hydraulic lines #18 and #19 along left A-Frame hitch. Placing hydraulic lines #19 just in front of A-Frame cross member. Attach hydraulic lines #19 to flare adaptor #15 on far valve assembly. Attach hydraulic lines #18 to flare adaptor #16 which in turn is connected to cartridge valve #17. Fasten the two hoses #20 to hydraulic line #18 and #19.
2. Secure swivel elbows #3 to left and right fork cylinder #1, Elbows should be facing down cylinder as shown. Attach hoses #4 and #5 to swivel elbows with longer hoses to top ports. lay hydraulic lines #6 and #22 for left side along A-Frame hitch, #6 lines to the cross #16 that is attached to the cartridge valve. the #22 and #7 line attach to the solenoid #14. the hydraulic line #4 and #5 attach to the lines #6, #7 and #22.
3. Attach preassembled motor hoses #21 to hydraulic motor.
4. Secure swivel elbows #2 and #3 to tilt deck #7 with swivel elbows restrictor #2 in bottom port. Connect preassembly hoses #9 and #10, the longer hose #9 going to the top port.

PRE-OPERATION ASSEMBLY

CAUTION: To fill hydraulic hoses and cylinder with oil, proceed as follows:

1. Install fittings to hose ends. Connect hydraulic hoses to tractor.
2. With forks still in down position carefully operate controls allowing oil to flow to each fork cylinder.

IMPORTANT: While raising mover bed or fork lift, check all hoses and cylinders for leaks, etc.

3. Before disconnecting hydraulic hoses, raise bale forks to the transport position. Install safety pins.

# OPERATION

## OPERATION

- A. Operate Bale Mover only from tractor.
- B. The model H-4250 LAURIER BALE MOVER is designed for maximum work efficiency with minimum operator fatigue. An unfamiliar operator should spend time to learn the operating characteristics of the machine. A period of careful practice is recommended which will reward you with safe and efficient operation.
- C. The tractor should be of 75 H P class or larger and must have a good hydraulic working system, 2000 PSI with 15-20 gallons per minute.

## MODE OF OPERATION

The H-4250 LAURIER BALE MOVER is able to pick up and transport 12-1500 pound bales. Follow the mode of operation below.

CAUTION: BEFORE OPERATING HYDRAULICS, REMOVE LIFT FORK SAFETY PINS ONLY IF CYLINDERS ARE LOADED.

1. Approach the round bale with the right fork in the lowered position. Advance till the bale rests firmly between the lift fork teeth. Raise the fork, until the bale falls onto the mover bed. Do same on opposite side.
2. Roll back 2 loaded bales just far enough to make space to load next 2 bales. The lift forks may have to be lowered slightly for larger bales.
3. Continue to load round bales in similar right and left fashion until 12 Bales are loaded.

## TRANSPORTING BALES

To transport loaded Bale Mover.

CAUTION: WHEN TRANSPORTING BALE MOVER ON PUBLIC ROADS OR HIGHWAY, BE SURE TO INSTALL LIFT FORK SAFETY PINS. BE SURE THAT THE MACHINE IS EQUIPPED WITH A SLOW MOVING SIGN THAT IS CLEARLY VISIBLE FROM THE REAR.

## UNLOADING BALES

IMPORTANT: Depending on Bale size, in some cases, to enable the loaded bale to move past the forks, the forks may have to be lowered slightly.

CAUTION: BE SURE TO REMOVE LIFT FORK SAFETY PINS BEFORE OPERATING HYDRAULICS.

1. Raise the mover bed to full extended height.
2. With conveyor down, advance tractor at same speed as chain speed.

IMPORTANT: THE SPEED OF TRACTOR ADVANCEMENT AND CHAIN SPEED MUST BE KEPT CONSTANT, OTHERWISE THE DRIVE CHAIN WILL CUT BALE STRINGS OR CAUSE IMPROPER BALE SPACING.

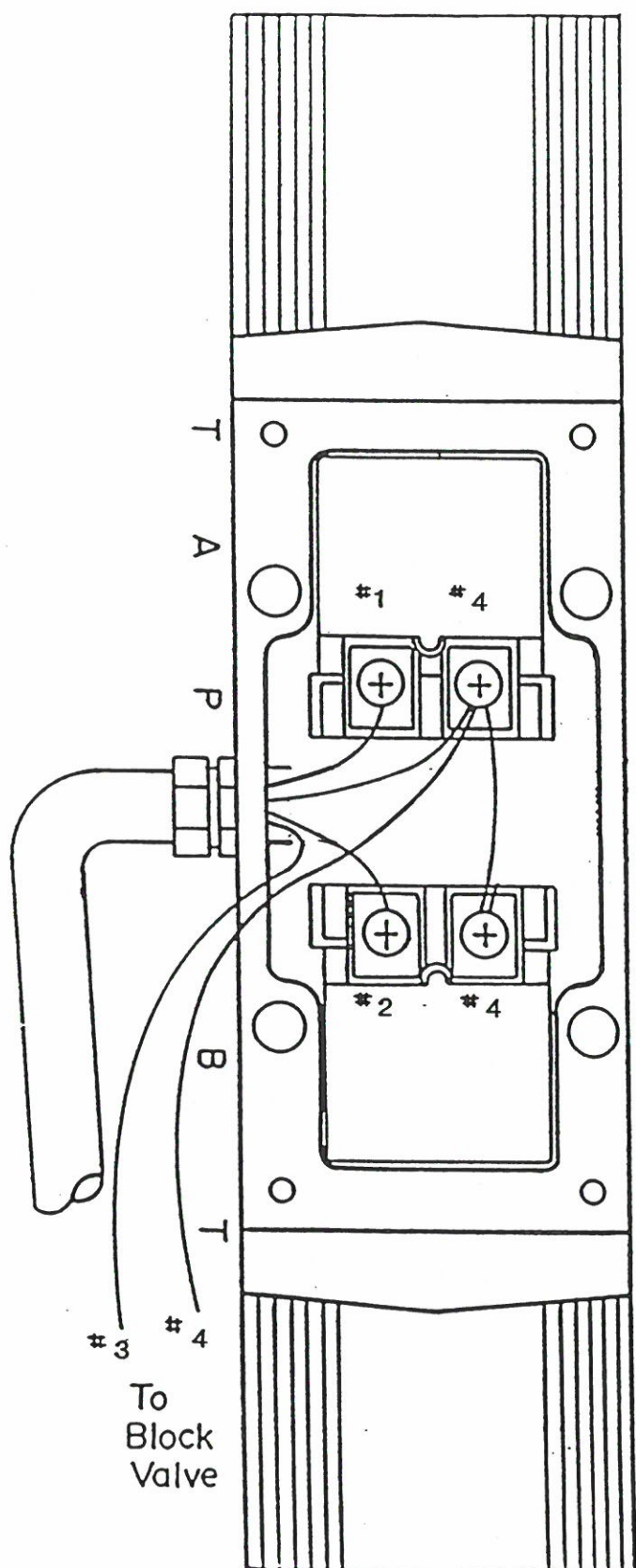
# TROUBLE SHOOTING

LAURIER

<u>SYMPTON</u>	<u>PROBABLE CAUSE</u>	<u>REMEDY</u>
1. Loads only 10 Bales or less	*Reversing too far *Depending on Bale type	*Pack bales on mover closer *Will accept 12-5½' Bales
2. Strings cut when unloading	*Tractor, chain speed uneven *Inside lift fork too low	*Keep tractor & chain speed constant *Raise fork accordingly
3. Chain falls from track	*Chain not tight *Forks too close to mover bed	*Tighten chain as on Page 15 *Raise inside lift fork
4. Chains twist or lean	*Pressure from bales caused by side loading	*Straighten with bar *Raise lower fork so bale wil clear side rail
5. Bed deck does not raise	*Low oil * Poor electrical connection *Needs seal kit	*Check tractor reservoir *Check wiring *Replace kit
6. Oil is too hot	* Hyd system open or closed	*Set toggle control i.e. if your tractor hydraulic is open centre set toggle switch on open.
7. Switches work in opposite direction	*Improper Connection	*Switch hydraulic lines from tractor outlet.



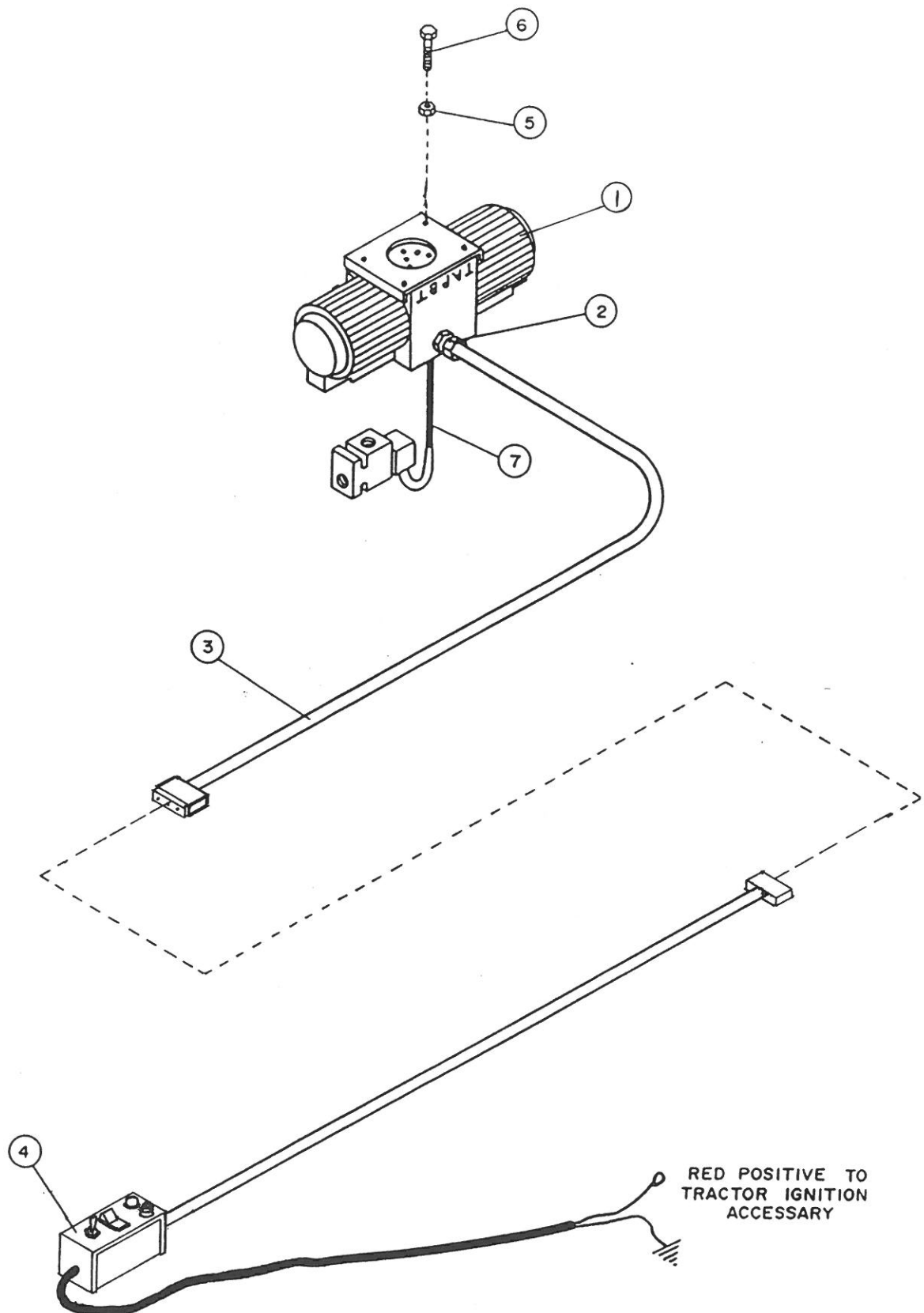
LAURIER



- #1 White Right Bale Fork
- #2 Red Left Bale Fork
- #3 Green Deck Tilt
- #4 Black Ground

Down Position

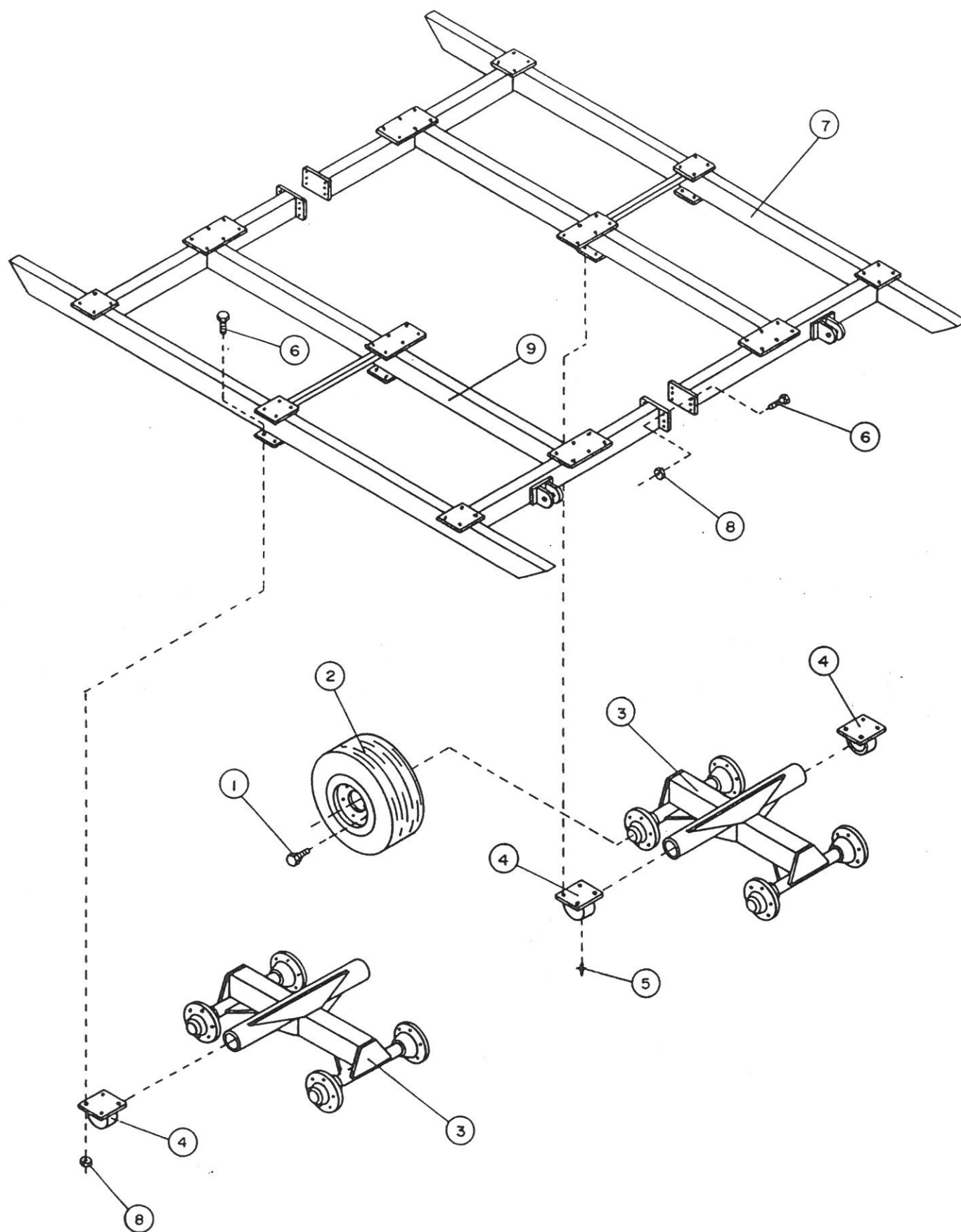
NOTE View From Underside Of Machine



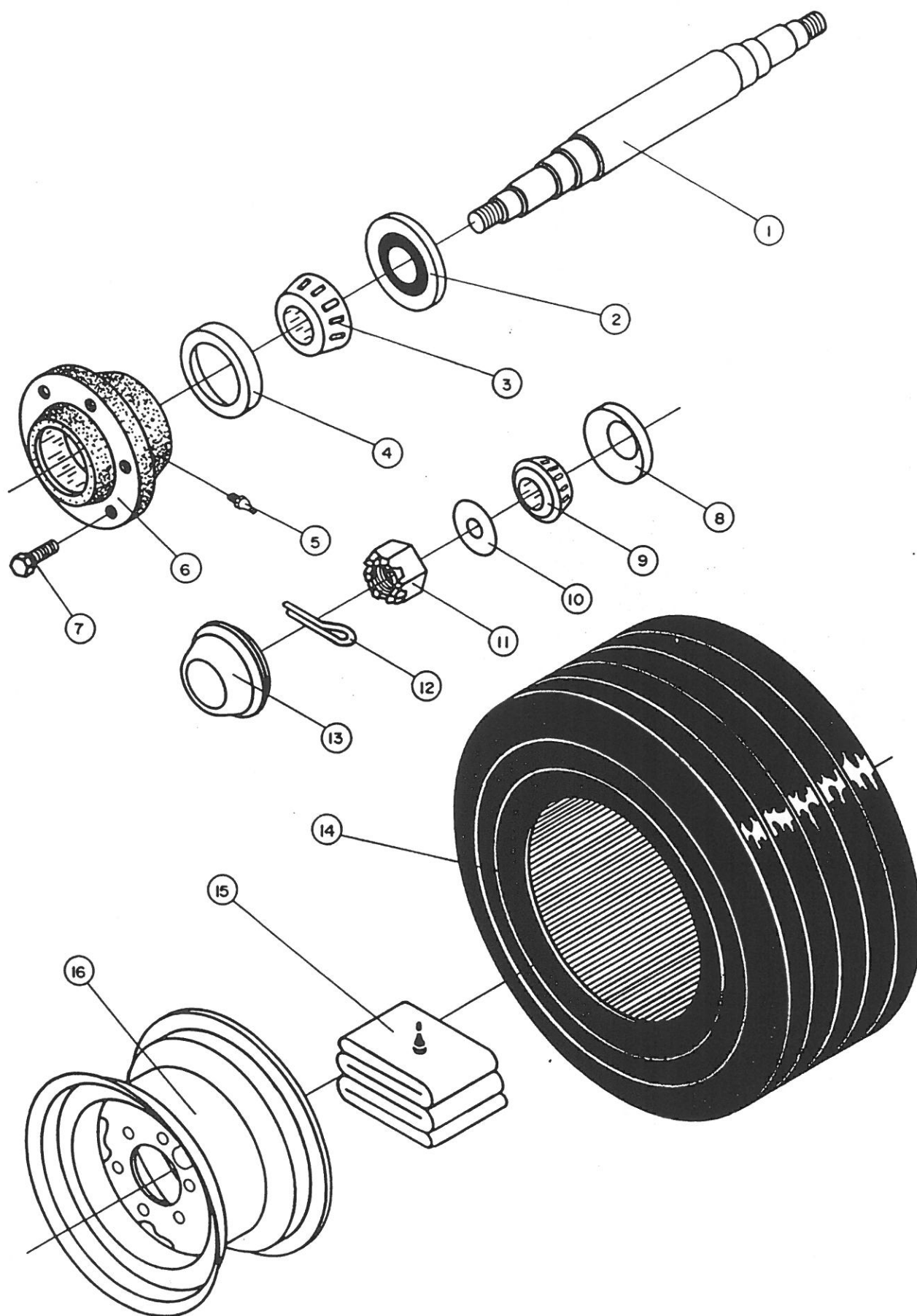


## PARTS CATALOGUE

<u>ITEM</u>	<u>PAGE</u>
Main Sub Frame .....	25
618 Hub and Spindle .....	27
A-Frame Hitch & Rail Assembly .....	29
Fork Assembly .....	31
Gear Box & Shaft Assembly .....	33
Chain Tightener .....	35
Hydraulics System .....	37
3" x 16" Cylinder (Ram) .....	39
3½" x 13" Cylinder (CTD) .....	41
Electrical Hook-up .....	43

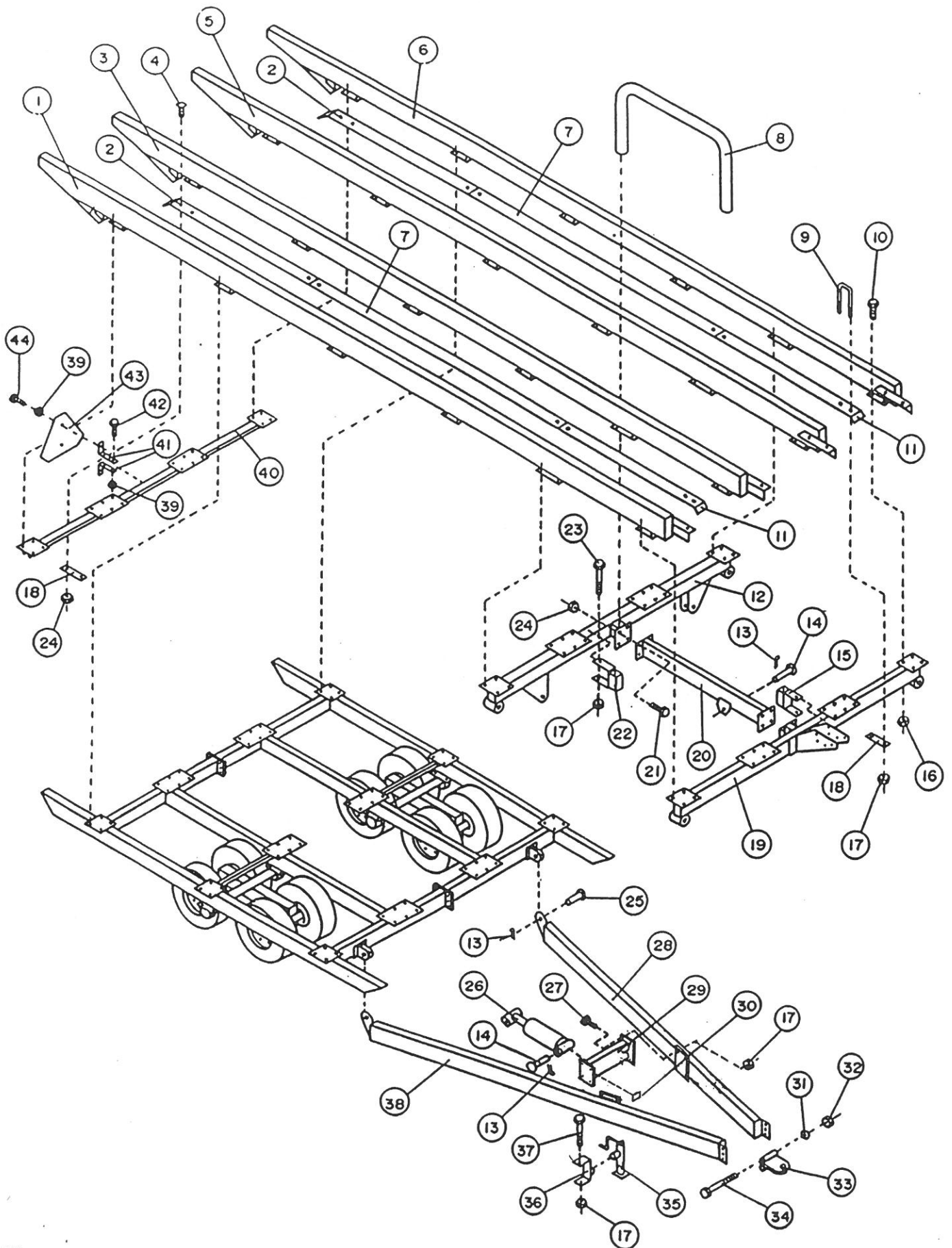






ITEM	PART NUMBER	DESCRIPTION	Nº
1	91255	2" Dia Dual Spindle x 25"	1
2	91091	618 Seal	2
3	91171	618 Inner Cone LM25580	2
4	91151	618 Inner Race LM25520	2
5	91700	Grease Nipple 1/8" NPT Straight	2
6	91071	618 Hub	2
7	91061	Wheel Bolt 9/16"	12
8	91131	618 Outer Race LM48510	2
9	91111	618 Outer Cone LM48548	2
10	91190	Washer Hub	2
11	91210	Castlelated Nut	2
12	CP0324	Cotter Pin 3/16" x 1 1/2"	2
13	91231	618 Dust Cap	2
14	91004	9.5L x 8 ply Hi-Way Service x 15"	2
15	91045	9.5L Standard Tube	2
16	91050	15" x 8" x 6 Wheel Rim	2

## A-FRAME HITCH AND RAIL ASSEMBLY





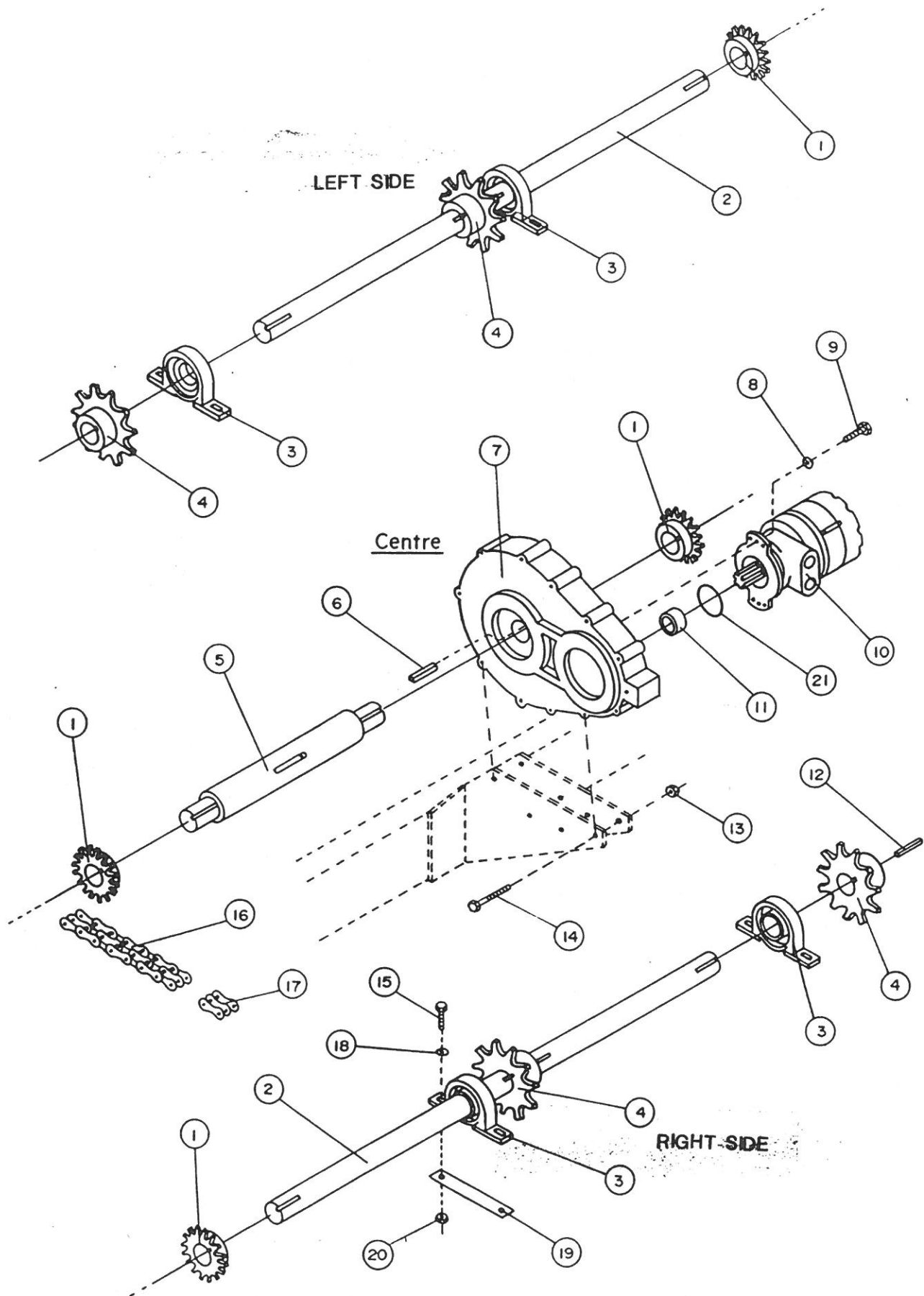
ITEM	PART NUMBER	DESCRIPTION	Nº
1	40033	Right Outside Rail	1
2	40028	Rear Bale Slider	2
3	40034	Right Inside Rail	1
4	CB5C0740P	Carriage Bolt 7/16" x 2 1/2"	4
5	40035	Left Inside Rail	1
6	40036	Left Outside Rail	1
7	40027	Middle Bale Slider	2
8	40015	Bale Divider	2
9	UB0848112	U-Bolt 1/2" x 3" x 7"	6
10	B5C0616P	Bolt 3/8" x 1"	96
11	40026	Front Bale Slider	2
12	40007	4" x 6" Cross Member	1
13	CP0440	Cotter Pin 1/4" x 2 1/2"	4
14	40009	Cylinder Bracket Pin	2
15	40044	3 x 6 Cross Member Bale Divider Holder	2
16	LN5C06P	Locknut 3/8"	96
17	LN5C08P	Locknut 1/2"	23
18	40029	Bale Slider Plate	8
19	40005	3 x 6 Cross Member	1
20	40039	Bale Divider Tube	1
21	B5C0720P	Bolt 7/16" x 1 1/4"	8
22	40043	4 x 6 Cross Member Bale Divider Holder	2
23	B5C08120P	Bolt 1/2" x 7 1/2"	4
24	LN5C07P	Locknut 7/16"	12
25	40003	A-Frame Hitch Pin 1 1/4" x 3"	2
26	90109	Cylinder 3" x 16"	1
27	B5C0824P	Bolt 1/2" x 1 1/2"	6
28	40014	Left A-Frame Hitch	1
29	40047	A-Frame Centre Member	1
30	92003	Serial Number Plate	1
31	W16P	Lockwasher 1"	2
32	N5C16P	Nut 1"	2
33	40004	Hitch Plate	1
34	B5C16120P	Bolt 1" x 7 1/2"	2
35	92033	Hitch Jack (5000 lbs)	1
36	40020	Jack Plate c/w Stub	1
37	B5C08152P	Bolt 1/2" x 9 1/2"	1
38	40013	Right A-Frame Hitch	1
39	LN5C04P	Locknut 1/4"	3
40	40006	Rear Channel Cross Member	1
41	40040	Slow Moving Sign Bracket	2
42	B5C0436P	Bolt 1/4" x 2 1/4"	2
43	92038	Slow Moving Sign	1
44	B5C0412P	Bolt 1/4" x 3/4"	2



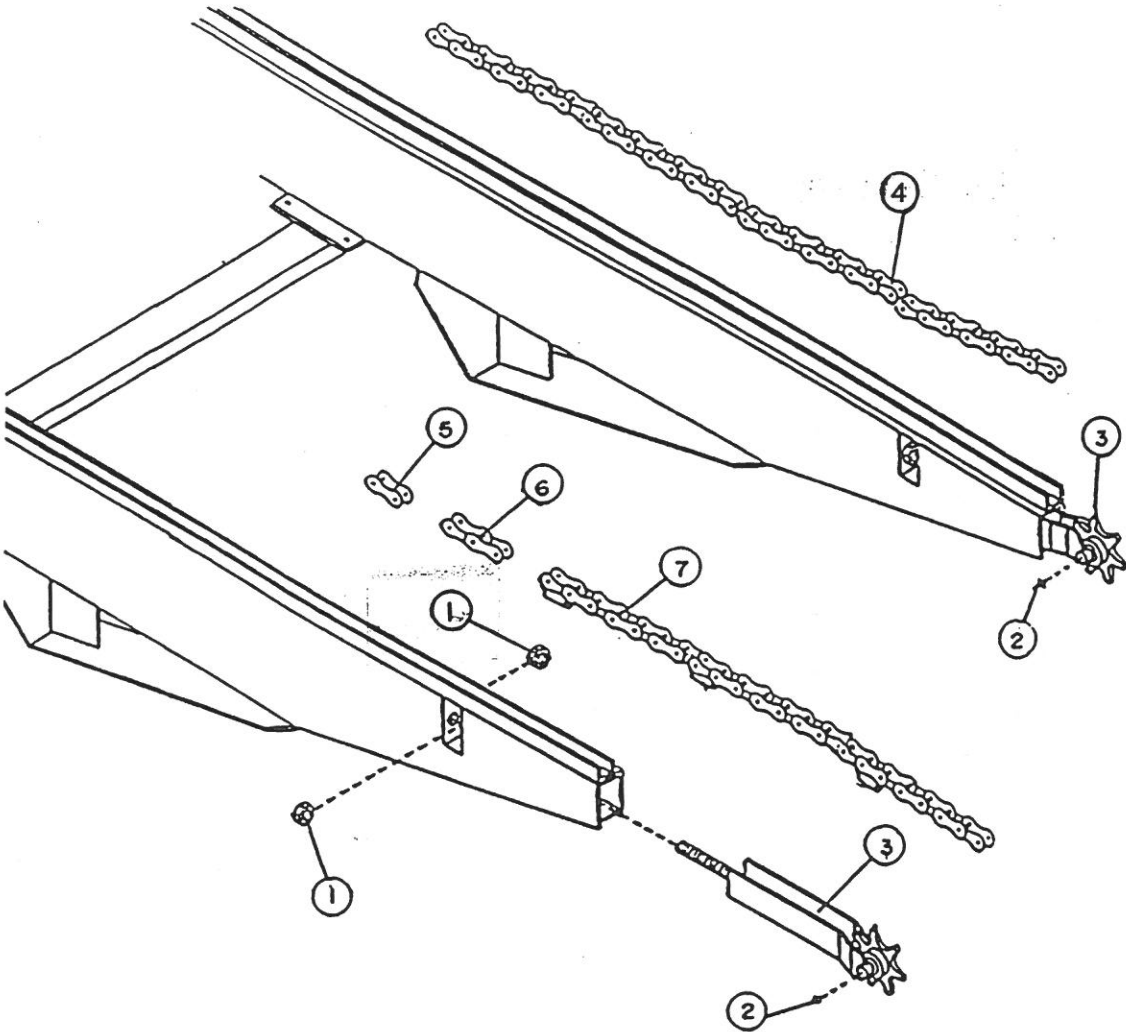


ITEM	PART NUMBER	DESCRIPTION	Nº
1	40009	Cylinder Bracket Pin	2
2	CP0440	Cotter Pin 1/4" x 2 1/2"	8
3	90108	Cylinder 3 1/2" x 13" Barrel	2
4	40011	Left Pivot Arm	1
5	40008	Front Pivot Arm Pin	4
6	40010	Pivot Slide Arm Pin	2
7	B5C1024P	Bolt 5/8" x 1 1/2"	20
8	HP40	Hair Pin Clip 2 1/2"	2
9	40019	Pivot Slide Arm Lock Pin	2
10	40017	Left Pivot Slide Arm	1
11	W10P	Lockwasher 5/8"	16
12	N5C10P	Nut 5/8"	16
13	40022	Right Fork Tooth	2
14	40023	Left Fork Tooth	2
15	40018	Right Pivot Slide Arm	1
16	40012	Right Pivot Arm	1
17	91700	Grease Nipple 1/8" NPT Straight	4

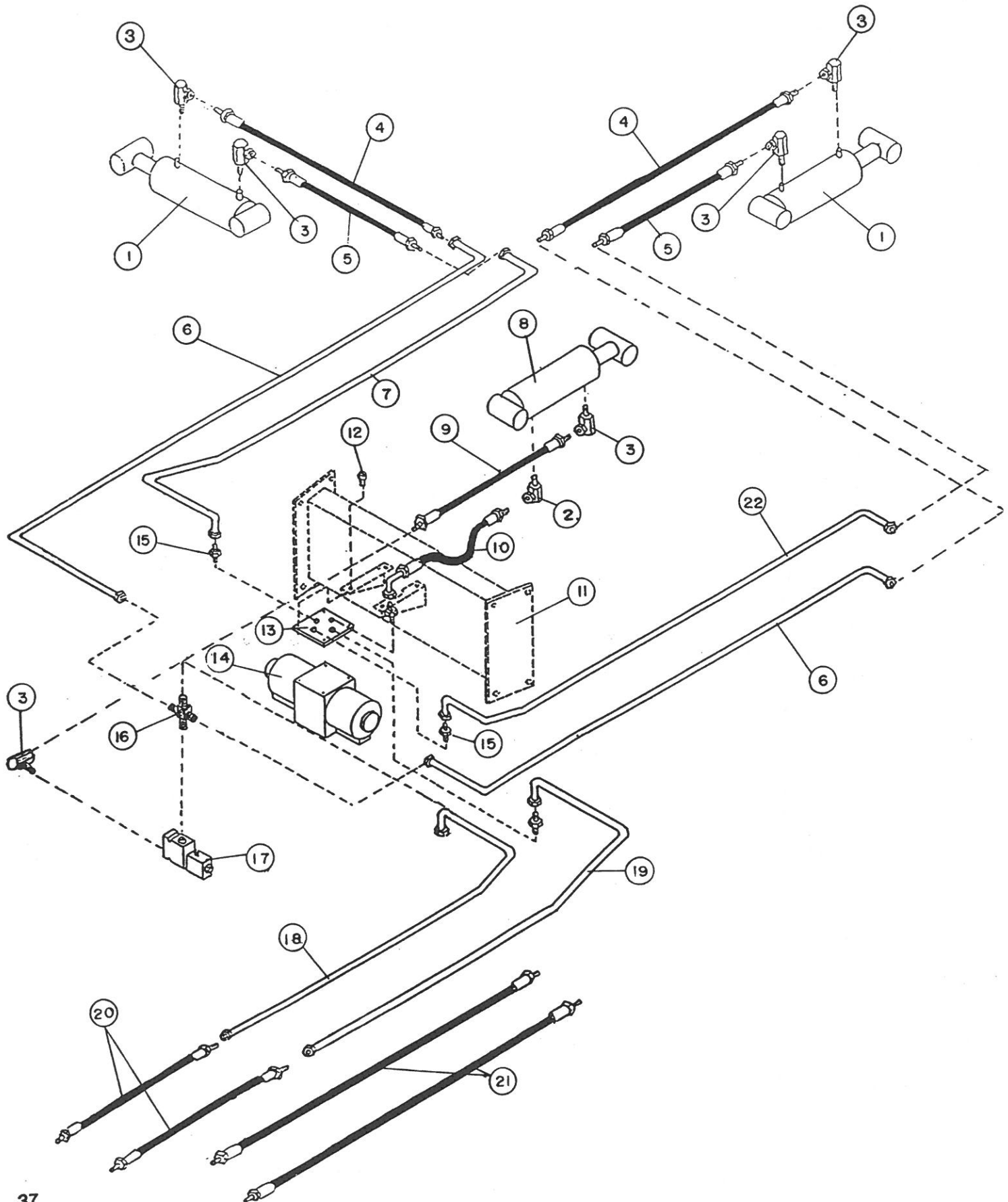
GEAR BOX AND SHAFT ASSEMBLY



ITEM	PART NUMBER	DESCRIPTION	Nº
1	92032	Coupler Sprocket 50B - 18T, 1 3/4" Bore	6
2	40030	Right or Left Gear Shaft	2
3	92031	1 3/4" Bore Pillow Block UCP 209	4
4	92029	Gear Box Sprocket C - 2062 - 11T 1 3/4" Bore	4
5	40031	Centre Gear Shaft	1
6	40041	Key Stock 1/2" x 3"	1
7	92030	Parallel Shaft Gear Box #590	1
8	W08P	Lockwasher 1/2"	2
9	B5C0824P	Bolt 1/2" x 1 1/2" Gr 5	2
10	92025	Hydraulic Motor	1
11	92039	Hydraulic Motor Collar	1
12	40042	Key Stock 3/8" x 2"	8
13	LN5C05P	Lock Nut 5/16"	4
14	B5C0564P	Bolt 5/16" x 4"	4
15	B5C0832P	Bolt 1/2" x 2"	8
16	91507	18LR 50-2 Chain c/w Connecting Link	2
17	91509	18LR 50-2 Connecting Link	*
18	FW08P	Flatwasher 1/2"	8
19	40032	Rail Bearing Shim Plate 1/16"	*
	40045	Rail Bearing Shim Plate 1/8"	*
20	LN5C08P	Locknut 1/2"	8
21	92044	Hydraulic Motor O-Ring	1
	92507	Left Shaft Complete includes #1-4, #12	*
	92508	Right Shaft Complete includes #1-4, #12	*
		*As Required	



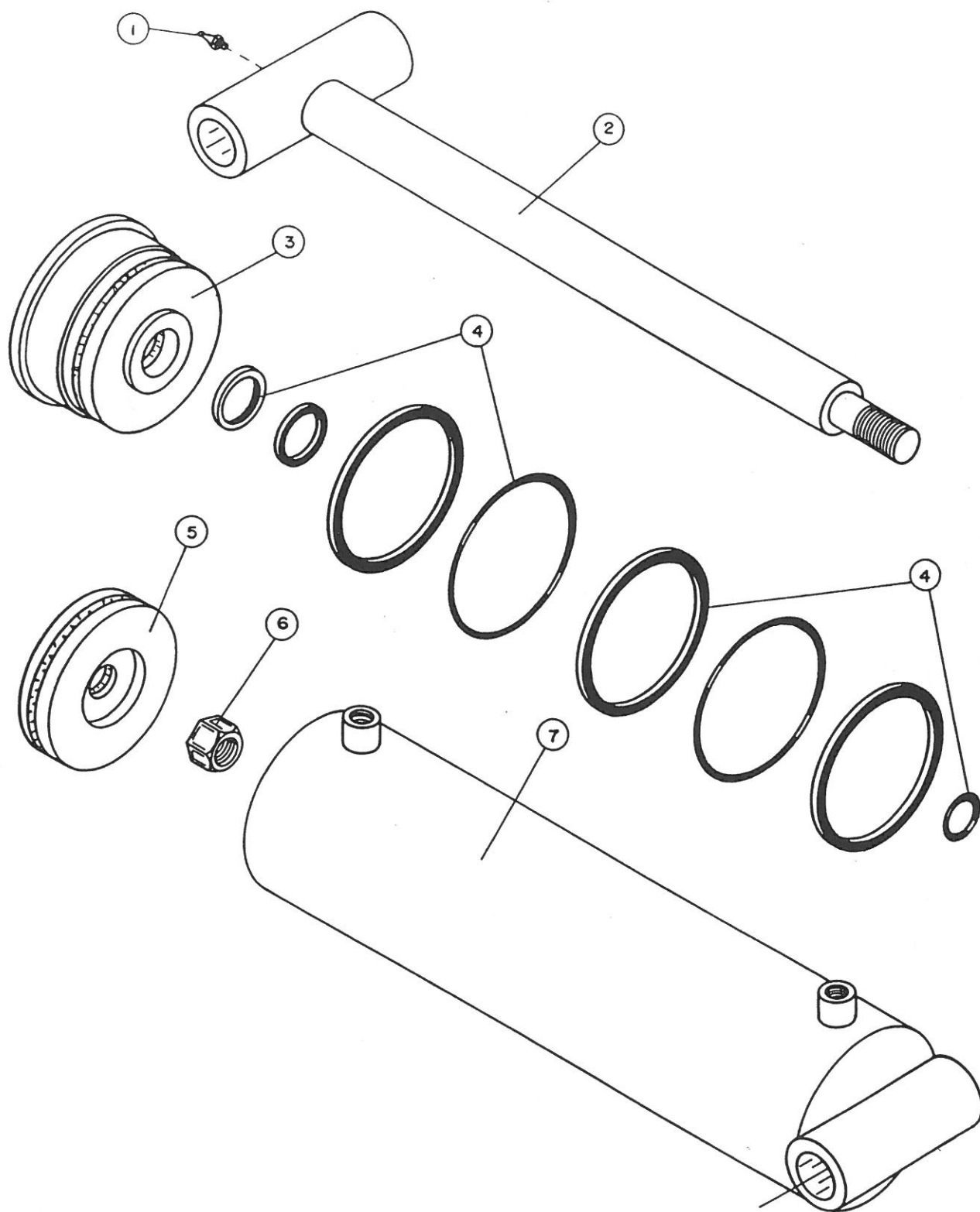
ITEM	PART NUMBER	DESCRIPTION	Nº
1	N5C10P	Nut 5/8"	8
2	91700	Grease Nipple 1/8" NPT Straight	4
3	40021	Chain Tightener Assembly	4
4	91508	C2062H Chain c/w Connecting Link	4
5	91511	C2062H Half Link	*
6	91510	C2062H Connecting Link	*
7	45034	C2062H Chain c/w Caps	4



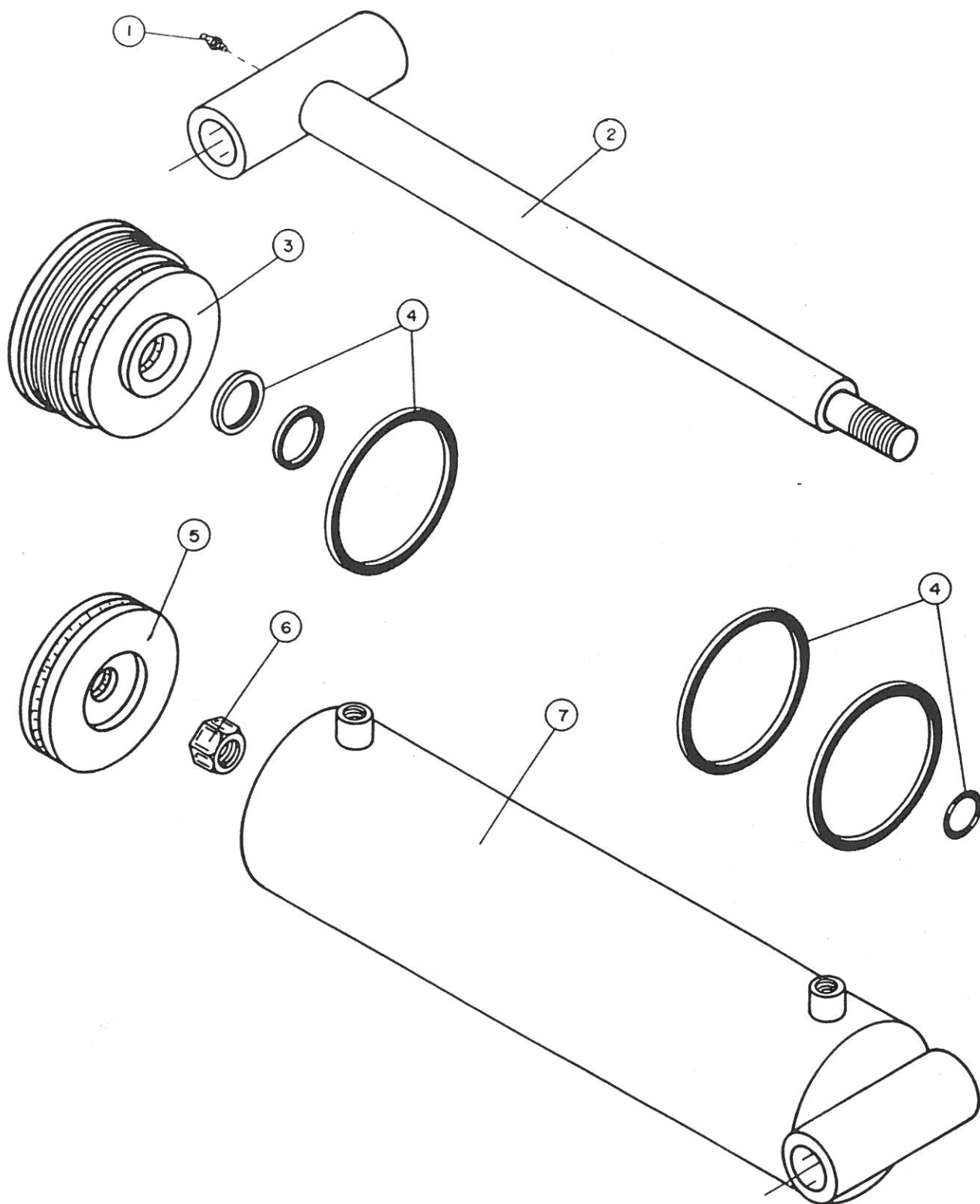


ITEM	PART NUMBER	DESCRIPTION	Nº
1	90108	Cylinder 3 1/2" x 13" Barrel (CTD)	2
2	90500	1/2" x 90° Swivel Elbow (Restricted)	1
3	90501	1/2" x 90° Swivel Elbow	5
4	90228	3/8" Hose 1 wire 1/2" MB x 1/2" MJ x 43"	2
5	90222	3/8" Hose 1 wire 1/2" MB x 1/2" MJ x 28"	2
6	90411	1/2" Left & Right Outer Hydraulic Line	2
7	90415	1/2" Right Inner Hydraulic Line	1
8	90109	Cylinder 3" X 16" Barrel (Ram)	1
9	90229	3/8" Hose 1 wire 1/2" MB x 1/2" MB x 32"	1
10	90224	3/8" Hose 1 wire 1/2" MB x 1/2" NJ-90T x23"	1
11	40047	A-Frame Centre Member	1
12	S5C0424P	AllanSet Screws RD-HD 1/4" x 1 1/2"	4
13	92035	Valve Sub Plate	1
14	92038	Solenoid Valve	1
15	90550	Flare Adaptor 848 FS0808	4
16	90553	1/2" Tube Cross 852 - FS	1
17	92036	Cartridge Valve	1
18	90413	1/2" Inner Tractor Hydraulic Lines	1
19	90412	1/2" Outer Tractor Hydraulic Lines	1
20	90230	1/2" Hose 1 wire 1/2" MB x 5/8" RA x108"	2
21	90223	3/8" Hose 1 wire 1/2" MJ x 1/2" MB x 58"	2
22	90414	1/2" Left Inner Hydraulic Line	1

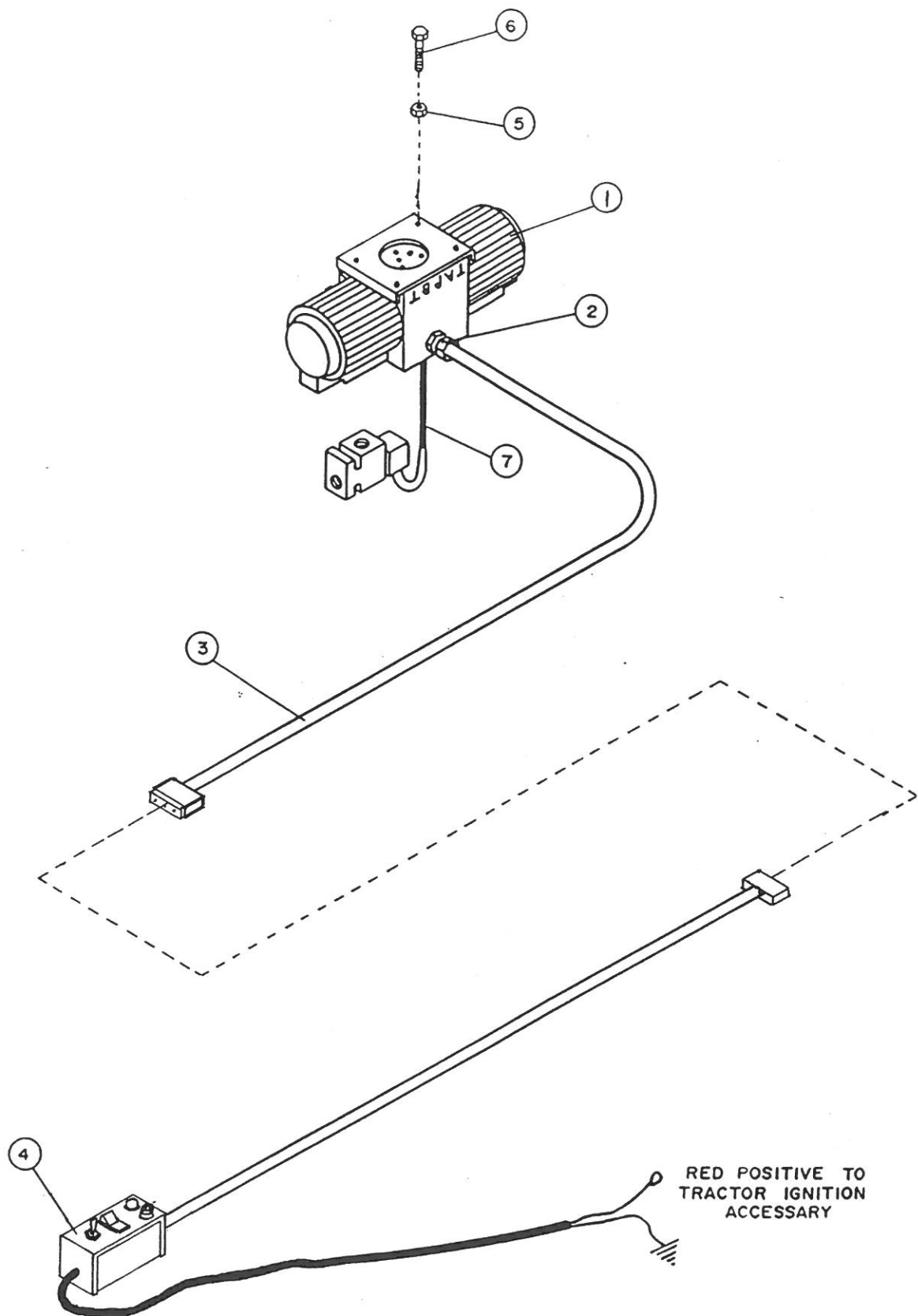




ITEM	PART NUMBER	DESCRIPTION	Nº
1	91700	Grease Nipple 1/8" NPT Straight	1
2	90646	Cylinder Shaft c/w Tube End	1
3	90666	3" Cylinder Screw on End Cap	1
4	90684	3" Seal Kit	1
5	90705	3" Cylinder Piston	1
6	90720	Piston Nut	1
7	90747	3" x 16" Cylinder Screw on tube (Tube End)	1
	90107	3" x 16" Cylinder Complete (Tube Ends)	*
		*As Required	



ITEM	PART NUMBER	DESCRIPTION	Nº
1	91700	Grease Nipple 1/8" NPT Straight	1
2	90645	Cylinder Shaft c/w Tube End	1
3	90662	3 1/2" Cylinder Screw on End Cap	1
4	90680	Seal Kit 3 1/2"	1
5	90700	Piston 3 1/2" Cylinder	1
6	90720	Piston Nut	1
7	90746 90108	3 1/2" x 13 Cylinder Screw on Tube 3 1/2" x 13 Cylinder Complete (Tube Ends)	1 *
		*As Required	



ITEM	PART NUMBER	DESCRIPTION	Nº
1	92038	Single Solenoid	1
2	92040	Electrical Adaptor	1
3	92041	Electrical Harness	1
4	92049	Electrical Harness c/w Control	1
5	LN5C05P	Locknut 5/16"	4
6	B5C0528P	Bolt 5/16" x 1 3/4"	4
7	92043	Plastic Hose & Connectors	1
	92026	Solenoid Valve Assembly Complete	*
		* As Required	

## Parts Index

PART #	PAGE	ITEM	DESCRIPTION
40001	25	9	Right Main Sub Frame
40002	25	7	Left Main Sub Frame
40003	29	25	Hitch Pin
40004	29	33	Hitch Plate
40005	29	19	3 x 6 Cross Member
40006	29	40	Channel Cross Member
40007	29	12	4 x 6 Cross Member
40008	31	5	Front Pivot Arm Pin
40009	29	14	Cylinder Bracket Pin
40010	31	6	Pivot Slide Arm Pin
40011	31	4	Left Pivot Arm
40012	31	16	Right Pivot Arm
40013	29	38	Right A-Frame Hitch
40014	29	28	Left A-Frame Hitch
40015	29	8	Bale Divider
40017	31	10	Left Pivot Slide Arm
40018	31	15	Right Pivot Slide Arm
40019	31	9	Pivot Slide Arm Lock Pin
40020	29	36	Jack Plate c/w Stub
40021	35	3	Chain Tightener Assembly
40022	31	13	Right Fork Tooth
40023	31	14	Left Fork Tooth
40024	25	4	Walking Beam Pockets
40025	25	3	Walking Beam
40026	29	11	Front Bale Slider
40027	29	7	Middle Bale Slider
40028	29	2	Rear Bale Slider
40029	29	18	Bale Slide Plate
40030	33	2	R & L Gear Shaft
40031	33	5	Centre Gear Shaft
40032	33	19	1/16" Bearing Shim Plate
40033	29	1	Right Outside Rail
40034	29	3	Right Inside Rail
40035	29	5	Left Inside Rail
40036	29	6	Left Outside Rail
40039	29	20	Bale Divider Tube
40040	29	41	Slow Moving Sign Bracket
40041	33	6	Keystock 1/2" x 3"
40042	33	12	Keystock 3/8" x 2"
40043	29	22	4 x 6 Bale Divider Holder
40044	29	15	3 x 6 Bale Divider Holder
40045	33	19	1/8" Bearing Shim Plate
40047	29	29	A-Frame Centre Member
45034	35	7	C2062H Chain c/w caps
90108	31	3	Cylinder 3 1/2" x 13"
90108	37	1	Cylinder 3 1/2" x 13"
90108	41	*	Cylinder 3 1/2" x 13"
90109	29	26	Cylinder 3" x 16"
90109	37	7	Cylinder 3" x 16"
90109	39	*	Cylinder 3" x 16"
90146	41	7	Screw on Tube 3 1/2" (Tube End)
90147	39	7	Screw on Tube 3" (Tube End)
90222	37	3	3/8" Hose x 28"
90223	37	23	3/8" Hose x 58"
90224	37	8	3/8" Hose x 26"
90228	37	5	3/8" Hose x 43"
90229	37	9	3/8" Hose x 32"
90230	37	20	3/8" Hose x 108"



PART #	PAGE	ITEM	DESCRIPTION
90409	37	19	1/2" Hyd. Line x 11"
90411	37	6	1/2" Hyd. Line Left & Right Outer
90412	37	19	1/2" Hyd. Line Outside Tractor
90413	37	18	1/2" Hyd. Line Inside Tractor
90414	37	22	1/2" Left Inner Hydraulic Line
90415	37	7	1/2" Right Inner Hydraulic Line
90500	37	2	1/2" Swivel Elbow (Rest.) 90°
90501	37	4	1/2" Swivel Elbow 90°
90550	37	11	Flare Adaptor
90553	37	16	1/2" Tube Cross 852-FS
90645	41	2	Cylinder Shaft c/w Tube End
90646	39	2	Cylinder Shaft c/w Tube End
90662	41	3	Screw on End Cap (3 1/2")
90666	39	3	Screw on End Cap (3")
90680	41	4	Seal Kit 3 1/2" (CTD)
90684	39	4	Seal Kit 3" (Ram)
90700	41	5	Piston 3 1/2"
90705	39	5	Piston 3"
90720	39	6	Piston Nut
90720	41	6	Piston Nut
91004	27	14	9.5L x 8 ply Hiway Tire x 15"
91030	25	2	9.5L x 8 ply Tire, Tube 8" Rim
91045	27	15	9.5L Standard Tube
91050	27	16	15" x 8" x 6" Wheel Rim
91061	25	1	9/16" Wheel Bolt
91061	27	7	9/16" Wheel Bolt
91071	27	6	618 Hub
91091	27	4	618 Inner Race
91111	27	9	618 Outer Cone
91131	27	8	618 Outer Race
91151	27	4	618 Inner Race
91171	27	3	618 Inner Cone
91190	27	10	Washer Hub
91210	27	11	Castlelated Nut
91231	27	13	618 Dust Cap
91255	27	1	2" Dia Dual Spindle x 25
91507	33	16	18LR 50-2 Chain, Conn. Link
91508	35	7	C2062H Chain c/w Conn. Link
91510	35	6	C2062H Connecting Link
91511	35	5	C2067H Half Link
91700	25	5	Grease Nipple 1/8" STR
91700	27	5	Grease Nipple 1/8" STR
91700	39	1	Grease Nipple 1/8" STR
91700	41	1	Grease Nipple 1/8" STR
92003	29	30	Serial Number Plate
92025	33	10	Hydraulic Motor
92026	43	*	Solenoid Valve Assembly Complete
92027	43	*	Electrical Harness Complete
92028	29	43	Slow Moving Sign
92029	33	4	Sprocket C-2062 - 11T
92030	33	7	Parallel Shaft Gear Bos
92031	33	3	Pillow Block UCP 209
92032	33	1	Coupler Sprocket 50B-18T
92033	29	35	Hitch Jack (5000 lbs)
92035	37	12	Solenoid Valve Sub Plate
92036	37	17	1/2" Nylon Adaptors
92038	37	15	Solenoid Valve DS 603
92038	45	1	Solenoid Valve DS 603

## LAURIER

PART #	PAGE	ITEM	DESCRIPTION
92039	33	11	Hydraulic Motor Collar
92040	43	2	Electrical Wiring Adaptor
92041	43	3	Electrical Harness
92043	43	7	Plastic Hose & Connect 9 1/2"
92049	43	4	Electrical Harness c/w Control
92507	33	*	Left Gear Shaft Complete
92508	33	*	Right Gear Shaft Complete
B5C0412P	29	44	Bolt 1/4" x 3/4"
B5C0436P	29	42	Bolt 1/4" x 2 1/4"
B5C0528P	43	6	Bolt 5/16" x 1 3/4"
B5C0564P	33	14	Bolt 5/16" x 4"
B5C0616P	29	10	Bolt 3/8" x 1"
B5C0720P	29	21	Bolt 7/16" x 1 1/4"
B5C0824P	25	6	Bolt 1/2" x 1 1/2"
B5C0824P	29	27	Bolt 1/2" x 1 1/2"
B5C0824P	33	9	Bolt 1/2" x 1 1/2" Gr 5
B5C0832P	33	15	Bolt 1/2" x 2"
B5C08120P	29	23	Bolt 1/2" x 7 1/2"
B5C08152P	29	37	Bolt 1/2" x 9 1/2"
B5C1074P	31	7	Bolt 5/8" x 1 1/2"
B5C16120P	29	34	Bolt 1" x 7 1/2"
CB5C0740P	29	4	Carriage Bolt 7/16" x 2 1/2"
CP0324	27	12	Cotter Pin 3/16" x 1 1/2"
CP0440	29	13	Cotter Pin 1/4" x 2 1/2"
CP0440	31	2	Cotter Pin 1/4" x 2 1/2"
Fw08P	33	18	Flatwasher 1/2"
HP40	31	8	Hair Pin Clip 2 1/2"
LN5C04P	29	39	Locknut 1/4"
LN5C05P	33	13	Locknut 5/16"
LN5C05P	43	5	Locknut 5/16"
LN5C06P	29	16	Locknut 3/8"
LN5C07P	29	24	Locknut 7/16"
LN5C08P	25	8	Locknut 1/2"
LN5C08P	29	17	Locknut 1/2"
LN5C08P	33	20	Locknut 1/2"
LN5C10P	35	4	Locknut 5/8"
N5C10P	31	12	Nut 5/8"
N5C10P	35	1	Nut 5/8"
N5C16P	29	32	Nut 1"
S5C0424P	37	13	Allan Set Screw 1/4" x 1 1/2"
UB0848112	37	13	U-Bolt 1/2" x 3" x 7"
W08P	33	8	Lockwasher 1/2"
W10P	31	11	Lockwasher 5/8"
W16P	29	31	Lockwasher 1"

