

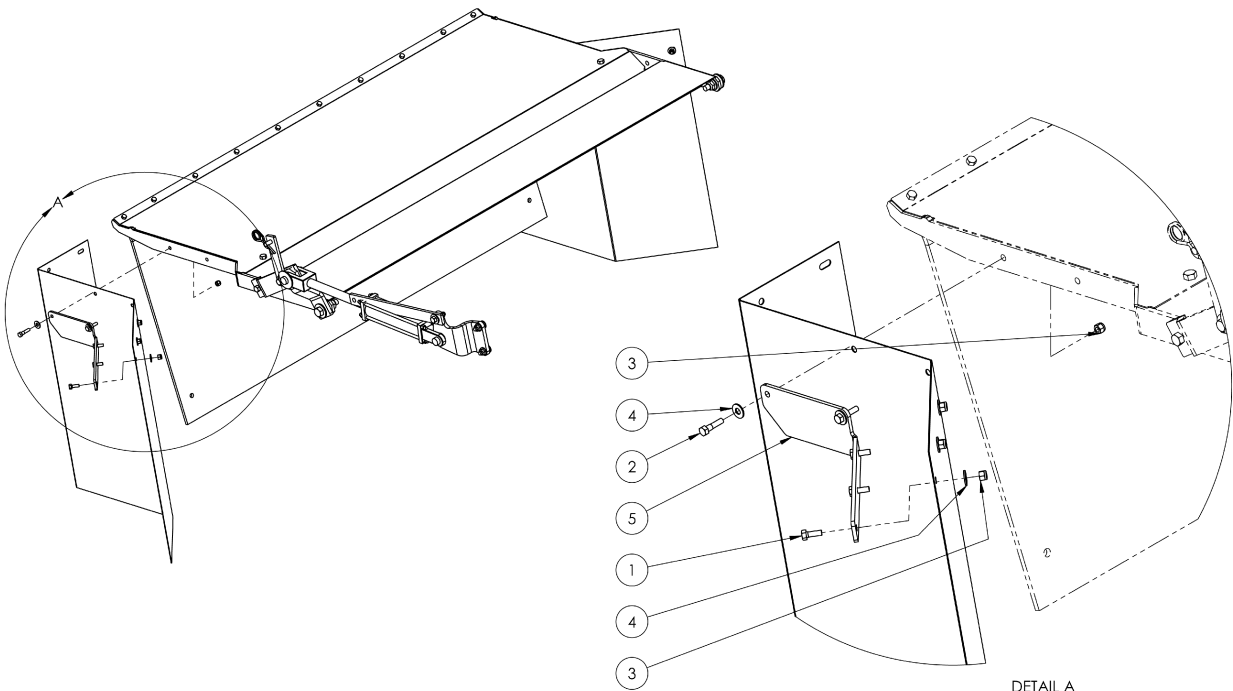
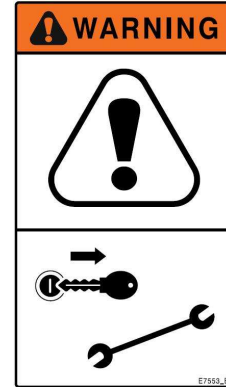
## Installation of the End Curtain Option



Shut down the tractor and remove the key before repairing, servicing, lubricating or cleaning the machine.

Relieve all hydraulic pressure in the hoses. Disconnect the hydraulic hoses from the tractor before going near the machine.

Securely block the machine to avoid any movement while doing the work.



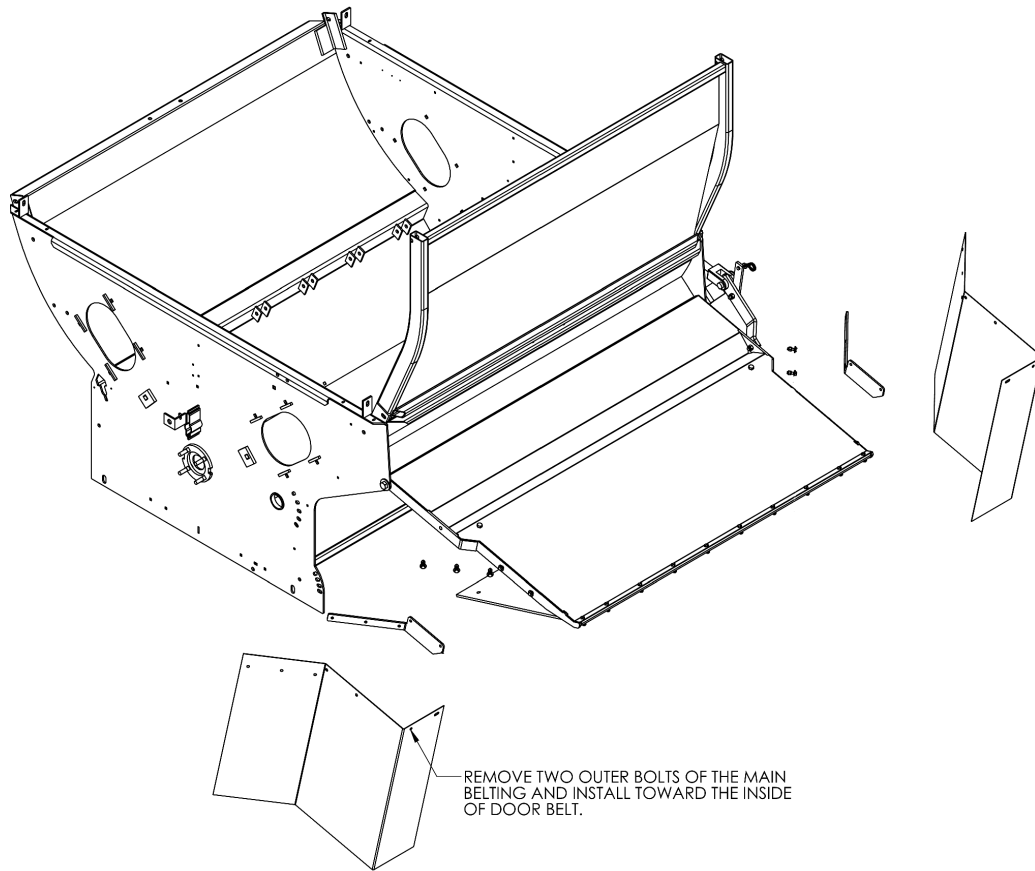
Install the End Curtain

42321\_BI

ITEM NO.	DESCRIPTION	QTY.
1	BOLT, HEX, 3/8X1, UNC, GR5, ZP	6
2	BOLT, HEX, 3/8X1-1/2, UNC, GR5, ZP	4
3	NUT, NYLOCK, 3/8, UNC, ZP	10
4	WASHER, FLAT, 3/8, ZP	10
5	PLATE, SKIRT, END, LH	1
6	PLATE, SKIRT, END, RH	1
7	CURTAIN, END, BELTING	1
8	CURTAIN, END, BELTING	1

## Installation of the End Curtain Option

---



Install End Curtain

42321\_A