

Bale Pro 4065-5 Owner's Manual

Table of Contents

Warranty	5
President's Message	6
Safety Precautions	7
1.0 Operating Instructions	8
1.1 General Operating Instructions	8
2.0 Maintenance Instructions	10
3.0 Safety Messages	12
3.1 Decal Location (Part No. 49666)	16
3.2 Safety Lock Locations	22
4.0 Parts Information	24
4.1 Tub and Frame Assembly (Part No. 49932)	24
4.2A Feed Roller Assembly (Part No. 49914)	25
4.2A.1 Feed Roller Drive (Part No. 49917)	26
4.2B Feed Roller Assembly (Part No. 49674)	27
4.2.2 Hydraulic Motor (Part No. 33377)	28
4.3 Driveline Guard Assembly (Part No. 49944)	29
4.4 Flail Drum Installation (Part No. 49933)	30
4.4.1 Flail Drum Assembly (Part No. 49908)	31
4.5 Flail Guard Rod Assembly (Part No. 49934)	32
4.6 Bale Defelctor Assembly (Part No. 49935)	33
4.7 Bottom Discharge Door Assembly (Part No. 49936)	34
4.8 Hydraulic Assembly (Part No. 49938)	35
4.9A Loading Forks and Frame Assembly (Part No. 49937)	36
4.9.1 Cylinder Assembly (Part No. 33800)	36
4.9B Loading Forks and Frame Assembly (Part No. 49937)	38
4.10 Upper Discharge Door Assembly (Part No. 49942)	40
4.11A Tire, Hitch and Jack Assembly (Part No. 49945)	42
4.11B Tire, Hitch and Jack Assembly (Part No. 49945)	43
4.11.1 Hub Assembly (Part No. 45224)	44
4.11A.2 Tire Assembly (Part No. 49089)	44
4.11B.2 Tire Assembly (Part No. 49895)	44
4.11.3 Jack Assembly (Part No. 33835)	45
4.11.4 Spindle Assembly (Part No. 49571)	45

5.0 Options	46
5.1 Standard PTO Option (Part No. BPO4PTO-5)	46
5.1.1 Standard PTO (Part No. 33836)	46
5.2 CV PTO Option (Part No. BPO4CVPTO-5 (89062))	47
5.2.1 CV PTO (Part No. 45230)	48
5.4 Hitch Clevis Option (Part No. BPOHC-4 (89004))	50
5.5 Flow Control Option (Part No. BPOFC-4 (89005))	51
5.6 Safety Chain Option (Part No. BPOSC-4 (89006))	51
STANDARD TIRE MOUNTING	52
6.0 Parts Index	54
7.0 Specifications	57
Dealer Information	58
Identification Numbers	58
Dealer Checklist	59

This page intentionally left blank.

Warranty

Highline New Agricultural Equipment Limited Warranty

Effective January 1, 2004 One (1) Year / 12 Months

Parts and Labour

Highline Mfg. Inc (hereinafter "Highline") warrants this new Agricultural product of Highline's manufacturer to be free from defects in material and workmanship, under normal use and service for one (1) full year after initial purchase/retail sale.

Highline will warrant its product for one (1) year parts and labour, if performed by a qualified Dealer. This Limited Warranty shall apply only to complete machines of Highline's manufacture, parts are covered by a separate Limited Warranty.

EQUIPMENT AND ACCESSORIES NOT OF HIGHLINE'S MANUFACTURE ARE WARRANTED ONLY TO THE EXTENT OF THE ORIGINAL MANUFACTURER'S WARRANTY AND SUBJECT TO THEIR ALLOWANCE TO HIGHLINE ONLY IF FOUND DEFECTIVE BY SUCH MANUFACTURER.

During the Limited Warranty period specified above, any defect in material or workmanship in any warranted item of Highline Agricultural Equipment not excluded below shall be repaired or replaced at Highline's option without charge by any authorized independent Highline Dealer. An authorized Dealer must make the warranty repair or replacement. Labour in accordance with Highline's labour reimbursement policy. Highline reserves the right to supply remanufactured replacement parts as it deems appropriate.

RETAIL PURCHASER RESPONSIBILITY: This Limited Warranty requires proper maintenance and periodic inspections of the Agricultural Equipment as indicated in the Operator's Manual furnished with each new Agricultural Equipment. The cost of routine or required maintenance and services is the responsibility of the retail purchaser. The retail purchaser is required to keep documented evidence that these services were performed. This Highline New Agricultural Equipment Limited Warranty may be subject to cancellation if the above requirements are not performed

EXCLUSIONS AND LIMITATIONS

The warranties contained herein shall **NOT APPLY TO:**

- (1) Any defect which was caused (in Highline's sole judgement) by other than normal use and service of the Agricultural Equipment, or by any of the following: (i) accident (ii) misuse or negligence (iii) overloading (iv) lack of reasonable and proper maintenance (v) improper repair or installation (vi) unsuitable storage (vii) non-Highline approved alteration or modification (viii) natural calamities (ix) vandalism (x) parts or accessories installed on Agricultural Equipment which were not manufactured or installed by Highline authorized Dealers (xi) the elements (xii) collision or other accident.
- (2) Any Agricultural Equipment whose identification numbers or marks have been altered or removed.
- (3) Any Agricultural Equipment which any of the required or recommended periodic inspection or services have been performed using parts not manufactured or supplied by Highline or meeting Highline Specifications including, but without limitation, lubricants (oil, grease), belt lacings, and hydraulic fluids.
- (4) Equipment used for rental, custom work, industrial and construction or if equipment is used for any other purpose than the intended agricultural application.
- (5) Any Agricultural Equipment used in demonstrations not performed by a Highline Dealer. Warranty will be at the discretion of Highline for all other demonstration warranty.
- (6) **New Agricultural Equipment delivered to the retail purchaser in which the warranty registration has not been completed and returned to Highline within ten (10) days from the date of purchase.**
- (7) Any defect that was caused (in Highline's sole judgement) by operation of the Agricultural Equipment not abiding by standard operating procedures outlined in the Operator's Manual.
- (8) Tire Limited Warranties and support are the responsibility of the respective product's manufacturer.
- (9) Transportation costs, if any, of transporting to the Highline Dealer.
- (10) In no event shall Highline's liability exceed the purchase price of the product.
- (11) Highline shall not be liable to any person under any circumstances for any incidental or consequential damages (including but not limited to, loss of profits, out of service time and damage to equipment which this equipment may be attached) occurring for any reason at any time.
- (12) Diagnostic and overtime labour premiums are not covered under this Limited Warranty Policy.
- (13) Depreciation damage caused by normal wear, lack of reasonable and proper maintenance, failure to follow operating instructions, misuse, and/or lack of proper protection during storage.
- (14) Accessory systems and electronics not of Highline's manufacture are warranted only to the extent of such manufacturer's respective Limited Warranty if any.
- (15) Wear items which are listed by product group below:

COMMON WEAR ITEMS: roller chain, sprockets, clutches, shear bolts, clutch components, chains, gearbox housings bolts/torqued parts, flails, feed roller belting, coupler chain, DRV couplers, bogie wheels, apron tines and hoses.

PARTS WARRANTY

Parts replaced in the warranty period will receive the balance of the one year New Agricultural Equipment Limited Warranty. Replacement parts after the original machine warranty are warranted to be free from defects of material for ninety (90) days or the part will be repaired or replaced, without labour coverage for removal and reinstallation.

EXCLUSION OF WARRANTIES. UNLESS OTHERWISE REQUIRED BY LAW, AND EXCEPT FOR THE WARRANTIES EXPRESSLY AND SPECIFICALLY MADE HEREIN, HIGHLINE MAKES NO OTHER WARRANTIES, AND ANY POSSIBLE LIABILITY OF HIGHLINE HEREIN UNDER IS IN LIEU OF ALL OTHER WARRANTIES, EXPRESS, IMPLIED, OR STATUTORY, INCLUDING, BUT NOT LIMITED TO, ANY WARRANTIES OF MERCHANT ABILITY OR FITNESS FOR A PARTICULAR PURPOSE. HIGHLINE RESERVES THE RIGHT TO MODIFY, ALTER AND IMPROVE ANY PRODUCT WITHOUT INCURRING ANY OBLIGATION TO REPLACE ANY PRODUCT PREVIOUSLY SOLD WITH SUCH MODIFICATION. NO PERSON IS AUTHORIZED TO GIVE ANY OTHER WARRANTY, OR TO ASSUME ANY ADDITIONAL OBLIGATION ON HIGHLINE'S BEHALF.

President's Message

Congratulations on your purchase of the *Bale Pro 4065*! Bale Pro, a proven name in livestock feed handling equipment, is manufactured by Highline Mfg. Inc. Highline Mfg. Inc. is a company with over 25 years experience in the farm implement industry.

This operator's manual has been prepared to provide information necessary for safe and efficient operation of your *Bale Pro 4065*. In this manual you will find safety procedures, maintenance routines and detailed parts diagrams. This bale processor model was designed for controlled, aggressive processing with less bunching. A little time and effort spent following the recommended maintenance procedures will increase the performance and durability of your bale processor.

In order to maintain our high standards, improvements are made from time to time. Highline Mfg. Inc. reserves the right to make such changes and improvements when practical to do so without incurring any obligation to make those changes and improvements on previously sold machines.

Should the need arise, this manual will assist you in acquiring replacement parts. If your dealer does not have the parts you require in stock, they will be happy to order them for you. Also, if you find that you require information not covered in this manual, feel free to consult you local dealer or Highline Mfg. Inc.

Highline Mfg. Inc. thanks and congratulates you for choosing the *Bale Pro 4065* as the livestock feed handling equipment for your needs.

*Chuck LePage, President
Highline Mfg. Inc.*

PO Box 307, Vonda, Saskatchewan, S0K 4N0

Phone 1-800-665-2010 Fax (306) 258-2010

Internet Address: <http://www.highlinemfg.com>

Safety Precautions

WORK SAFELY – FOLLOW THESE INSTRUCTIONS

CAREFUL OPERATION IS THE BEST INSURANCE AGAINST AN ACCIDENT!

- Keep children and adults away from discharge area while processing.
- Know the controls and what they do.
- Check the machine to ensure nothing restricts moving or rotating parts.
- Ensure PTO is disengaged before starting tractor.
- Never leave tractor while PTO is engaged.
- Lower forks to ground after operation.
- Never attempt to manually remove debris while the PTO is activated.
- Do not transport Bale Pro on highway with PTO extension shaft on machine or with bales in tub or on the forks.
- Disconnect PTO before unplugging or adjusting processor.
- Always keep safety shields in place.
- Relieve pressure in hydraulic lines before disconnecting lines or performing other work on the hydraulic system.
- Never allow anyone to stand behind the processor while loading bales.
- Ensure the discharge door is raised completely with transport lock installed to lock it to the tub when transporting machine.



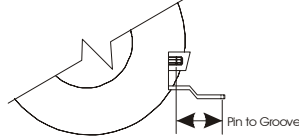
Before operating the Bale Pro 4065, be sure to review *all* of the instructions and familiarize yourself with its features.

1.0 Operating Instructions

1.1 General Operating Instructions

Successful operation of the Bale Pro 4065 is dependent upon the consistency of the bale, the position of the flail guard rods, the speed of the feed roller and also upon the operator. The following steps ensure proper and efficient operation. Please read them all carefully before operating your new BP4065.

1. Ensure that the drawbar on the tractor is extended so that the pin is 17" from the groove on the PTO on the tractor for the standard 1-3/8" diameter, 1000 rpm yoke.



2. It is recommended that the hitch tongue be placed so that the Bale Pro 4065 frame is level or slightly downward toward the tractor. This will ensure that the bale forks are low enough to load a bale. Ensure adequate clearance to the PTO shaft.
3. Ensure that the machine stays properly greased at all recommended locations (See Maintenance Instructions).
4. The top discharge deflector is manually controlled. The transport lock is located in the middle of the door on the discharge side. Disengage the lock and lower the door until the chains carry the weight. Use the handle on the front side of the door to fully raise the door into operating position. The operating lock is located on the top side of the door. Engage the lock into the tab on the top deflector and engage the lock pin to ensure the operating lock does not disengage during operation.
5. To adjust the bottom discharge deflector, stand on the left side of the machine, pull the bottom deflector toward the front of the machine, raise or lower the door as required and then release the door to allow the spring to engage the door into one of the desired retaining holes.
6. The adjustment of the flail guard rods is done with the handle on the front of the machine. Pull the handle towards yourself and raise or lower the handle. Raising the handle will make the Bale Pro more aggressive while lowering the handle will make it less aggressive. There are four different settings for the flail guard rods as shown on the decal by the handle. If the processor is operated too aggressively, the flails will slap back on the flail drum. **Continued 'backslap' can cause damage and unnecessary wear to the flail drum, flails, and flail bushings.** Therefore, avoid excessive and prolonged 'backslap' whenever possible by adjusting the flail guard rods to a slightly less aggressive setting and reducing the bale rotation speed while processing.
7. The feed roller speed should be set to a maximum of 40 rpm. It is HIGHLY RECOMMENDED for first time users to run the feed roller even slower. Running the feed roller too fast will cause the feed roller to dig a hole in the bale to the point where the bale cannot be processed. Adjustment can be done by adjusting the flow control on the tractor (if it is equipped with a flow control). If you do not have a flow control on your tractor, a flow control kit can be purchased from your Highline dealer.

8. Before loading the bale, engage the PTO to ensure that the flail drum is operating properly. Start feed rollers using the hydraulic controls and check to ensure the feed roller turns in both directions.
9. To load bales, lower the forks **completely** and back up to the bale **slowly** until the forks are completely under the bale. Raise the forks until the bale falls into the processor. The bale will not lift if it is pressing up against another bale. Another bale may be loaded onto the forks while a bale is in the processor. If a bale is loaded onto the forks while one is being shredded, raise the forks as high as possible, making sure the bale on the forks does not interfere with the bale already in the tub. Raising the forks will reduce the pressure on the hydraulic lift assembly.
10. Orientation of the bale during loading causes the hay/straw to discharge from the processor differently. If the bale is shredded in the same direction in which it was baled, the hay/straw tends to come off in layers. If the bale is shredded in the opposite direction, feeding may be uneven.
11. **Do not dislodge frozen bales with forks. Damage to the lift mechanism may result.**
12. When ready, engage the tractor PTO at an idle. Increase the PTO speed until it reaches 1000 rpm. Make sure that before the PTO is engaged, the forks are not interfering with the bale in the tub.
13. To process bales, rotate the bale using the feed roller. It is recommended to start processing the bales in a counter - clockwise rotation (as see from the front of the machine). If the bale stops rotating, reverse the direction of the feed roller for no more than 1 second only and then continue processing in the counter - clockwise rotation. Once the bale has reached approximately half of its original diameter, the bale can be processed in the clockwise direction. If the bale stops rotating, reverse the direction of the feed roller for 1 or 2 seconds only.

Note: Since the feed roller is designed to be aggressive for positive bale rotation, it is NOT recommended to rotate the feed roller in the reverse direction for more than a one second when the bale is stalled.

13. Before stopping the PTO, idle down (tractors with PTO brakes) to reduce flail 'backslap'.

WARRANTY WILL BE VOID IF ANY COMPONENT OF THIS MACHINE IS ALTERED OR MODIFIED IN ANY WAY WITHOUT WRITTEN PERMISSION FROM HIGHLINE MFG. INC.



Top Discharge
Transport Lock

Flail Guard Rod
Adjustment

Bottom Deflector
Adjustment

2.0 Maintenance Instructions

Please follow these maintenance procedures to ensure years of trouble free operation of your Bale Pro 4065.

Twine must be removed from the flail drum *at least* every 25 bales. Premature bearing failure can occur if twine is allowed to build up on the flail drum.

Flail bolts must be tightened after the first ten bales and rechecked after approximately 200 bales (160 ft lbs min., 240 ft lb max.).

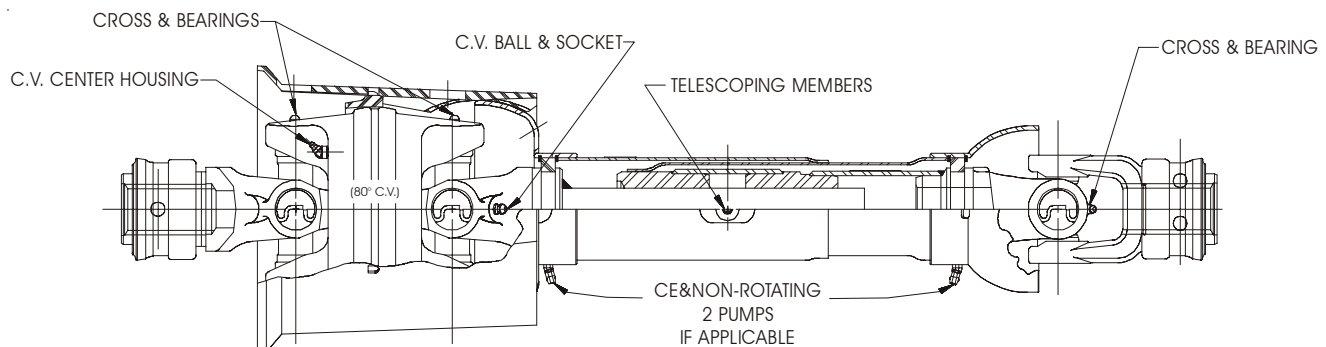
Maintaining proper lubrication of the Bale Pro 4065 is crucial for proper operation. Lubricate all fittings with a good quality lithium soap base E.P. grease meeting the N.L.G.I. #2 specifications and containing no more than 1% molybdenum disulfide.

An E.P. grease meeting the N.L.G.I. #2 specifications and containing 3% molybdenum disulfide may be substituted in the telescoping, CV Ball and socket, and CV centre housing member only. For applications operating below 0°F (-18°C) a good quality polyurea grease, meeting the N.L.G.I. #2 specifications and containing no more than 1% molybdenum disulfide, may be substituted for lubricating all fittings. Below is a list of the points and the frequency with which these points should be greased. Also shown are figures indicating the points that require lubrication. The first lube interval should be 8-16 hours of operation after initial start-up then follow the schedule below.

USE LEVER TYPE GREASE GUN

INTERVAL	LOCATION	AMOUNT
8 HRS**	CROSS AND BEARINGS	2-3 PUMPS
8 HRS	TELESCOPING MEMBERS	8-10 PUMPS
8 HRS**	CV BALL & SOCKET	4-6 PUMPS
24 HRS**	CV CENTER HOUSING	12-15 PUMPS

****Constant angle applications must have a lube interval of 4 hours.**



CAUTION: REPLACEMENT PARTS ARE NOT LUBRICATED

Replacement parts must be lubricated at time of assembly. Use amount listed above per location then follow lube recommendations outlined above for lubing intervals.

1. Flail Drum Bearings (Front and Rear): Every 8 hrs.
2. Wheel Hub Bearings (Left and Right): Every 16 hrs.

***Use low temperature grease when the temperature reaches below 0° Celsius (32° Fahrenheit).**



3.0 Safety Messages

General safety messages appear in this Safety Messages section. Specific safety messages are located in appropriate sections of the manual where a potential hazard may occur if the instructions or procedures are not followed.

Understand Safety Alert Symbol

This is the safety alert symbol. This symbol placed on your machine or in the manual is used to alert you to the potential for bodily injury or death.



Understand Signal Words.

A signal word “**Danger**”, “**Warning**”, or “**Caution**” is used with the safety alert symbol.

Safety signs with signal word “**Danger**”, “**Warning**” or “**Caution**” are located near specific hazards.

Danger – Imminent hazards which, if not avoided, will result in serious personal injury or death.

Warning – Potential hazards or unsafe practices which, if not avoided, could result in serious personal injury or death.

Caution – Potential hazards or unsafe practices which, if not avoided, could result in minor personal injury or product or property damage.

Read, Understand, and Follow Safety Instructions

Read, understand and follow all instructions and safety messages included in this manual and on decals attached to the machine. These instructions and safety messages contain important information.

Allow only responsible, properly instructed individuals to operate and service the machine.

Failure to follow the instructions and safety messages in this manual and on the decals attached to the machine could result in serious injury or death.

Keep all safety and instruction decals in good condition. Replace any missing or damaged decals.



Keep Machine in Good Condition

Be sure the machine is in good operating condition and that all safety devices are installed and functioning properly.

Visually inspect the machine daily before starting the machine.

Make no modifications to your equipment unless specifically recommended or requested by Highline Mfg Inc.

Keep Spectators Away From Machine

Keep all spectators and other workers away from the machine and work area while in operation.

Avoid Moving Parts

Contact with moving parts can cause death or serious injury.

- Keep away from power-driven parts such as the feed roller, flail drum and dump.
- Wear close-fitting clothing and confine long hair. Avoid wearing jewelry, such as rings, wrist watches, necklaces, or bracelets.
- Keep all shields and doors closed during operation.

Avoid High Pressure Leaks

Pressurized fluid can penetrate body tissue and result in serious injury or death. Leaks can be invisible. Relieve pressure before working on system. When searching for a leak, use an object like cardboard – not your hand. Fluid injected under the skin must be removed immediately by a surgeon familiar with this type of injury.

Avoid Tire Explosion

Tire explosion can result if the following procedures are not followed:

- Maintain correct tire pressure. Do not inflated tire above recommended pressure.
- Low tire pressure can cause internal tire damage. Inflate to recommended pressure.
- Replace any tire with cuts or bubbles. Replace any damaged rims.
- Do not weld or heat wheel assembly. Heating will increase tire pressure.

Working on the Bale Processor

For your safety and safety of others, the Shutdown Procedure, see below, must be followed before dismounting from the tractor for inspecting, lubricating, cleaning, unplugging, servicing, or repairing the bale processor.

Warning: Failure to follow any of the above safety instructions, or those that follow within this manual, could result in serious injury or death. This machine is to be used only for those purposes for which it was intended, as explained in this Operator's manual.

Safety Decal Maintenance

Safety decals located on your machine contain important and useful information that will help you operate your equipment safely.

To assure that all decals remain in place and in good condition, follow these instructions.

- Keep decals clean. Use soap and water – not mineral spirits, abrasive cleaners, or other similar cleaners that will damage the decal
- Replace any damaged or missing decals. When attaching decals, the temperature of the mounting surface must be at least 5°C (40°F). The mounting surface must also be clean and dry.
- When replacing a machine component with a decal attached, replace the decal also.
- Replacement decals can be purchased from your Highline equipment dealer.

SHUTDOWN PROCEDURE

Important: For your safety and the safety of others, this procedure must be followed before dismounting from the tractor for repairing, servicing, cleaning, or lubricating the bale processor.

A variation of this procedure may be used if so instructed within this manual, or the tractor manual, or if an emergency requires it.

- Step 1: Reduce the engine speed to idle.
- Step 2: Disengage tractor power takeoff.
- Step 3: Set tractor park brake.
- Step 4: Lower bale loader forks to the ground
- Step 5: Shut off tractor engine and remove key
- Step 6: Cycle tractor hydraulic controls to relieve any residual circuit pressure
- Step 7: Wait for rotor to stop turning.



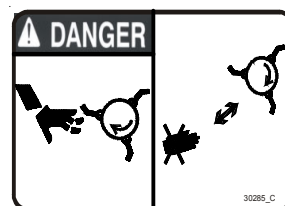
Stay Clear Of Rotating Driveline

Entanglement in rotating driveline can cause death or serious injury.

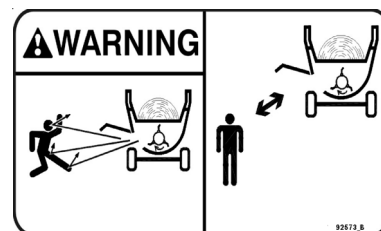
- Keep driveline shields in place at all times. Ensure shields turn and telescope freely.
- Wear close-fitting clothing and confine long hair.
- Stop engine and ensure the PTO driveline is stopped before working on driveline



DANGER: Contact with moving parts can result in death or serious injury. Always disengage power takeoff, set park brake, lower loader forks to the ground, shut off tractor engine, remove key, and wait for PTO to stop turning before unplugging by hand.

**Avoid Discharge Area**

Stay away from discharge side of Bale Processor when PTO is engaged. Injury of blindness is possible from material leaving discharge area.



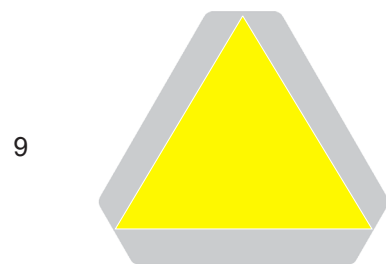
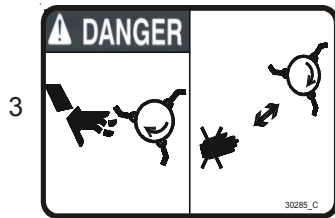
WARNING: Install and secure cylinder lock before servicing.



3.1 Decal Location (Part No. 49666)

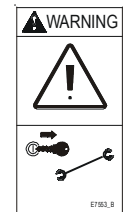
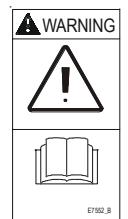
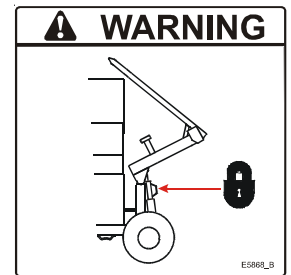
ITEM NO.	PART NO.	DESCRIPTION	QTY.
1	30208	PLT,SERIAL#	1
2	30271	DECAL,DANGER,ROTATING DRIVE	2
3	30285	DECAL,DANGER,TO PREVENT	2
4	30577	DECAL,RED REFL,2X9	2
5	30578	DECAL,AMBER REFL,2X9	2
6	32981	DECAL,PIMA	1
7	33601(11.13)	DECAL,PSTRP,11.13,YLW,1	1
8	33834(11.13)	DECAL,PSTRP,11.13,BLK,6	1
9	92028	SIGN,SLOWMOVING,S276.5	1
10	92573	DECAL,WARNING,DISCHARGE	2
11	92579	DECAL,HIGHLINE,4X30	3
12	E3265	DECAL,GREASEZERK,8H	2
13	E3266	DECAL,GREASEZERK,16H	2
14	E3834	DECAL,DANGER,DO NOT STAND	1
15	E5868	DECAL,LOCK,CYLINDER	1
16	E7552	DECAL,WARNING,OWNERS_MANUAL	1
17	E7553	DECAL,WARNING,STOP_ENGINE/SERVICE	1
18	E8517	DECAL,AGGRESSION,GUARD ROD	1
19	E8597	DECAL,BALEPRO_4065,7.2X29.6	1
20	30288	RIVET,ST,1/8X.390,.250HEAD	2
21	31029	BOLT,HEX,1/4X1,UNC,GR5,ZP	2
22	31174	NUT,NYLOCK,1/4,UNC,ZP	2

NOTE: Hardware used to attach serial plate and SMV Sign.



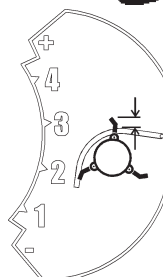
HIGHLINE

11



Bale Pro 4065

19



3.1 Decal Location (cont'd)



HIGHLINE 11

7

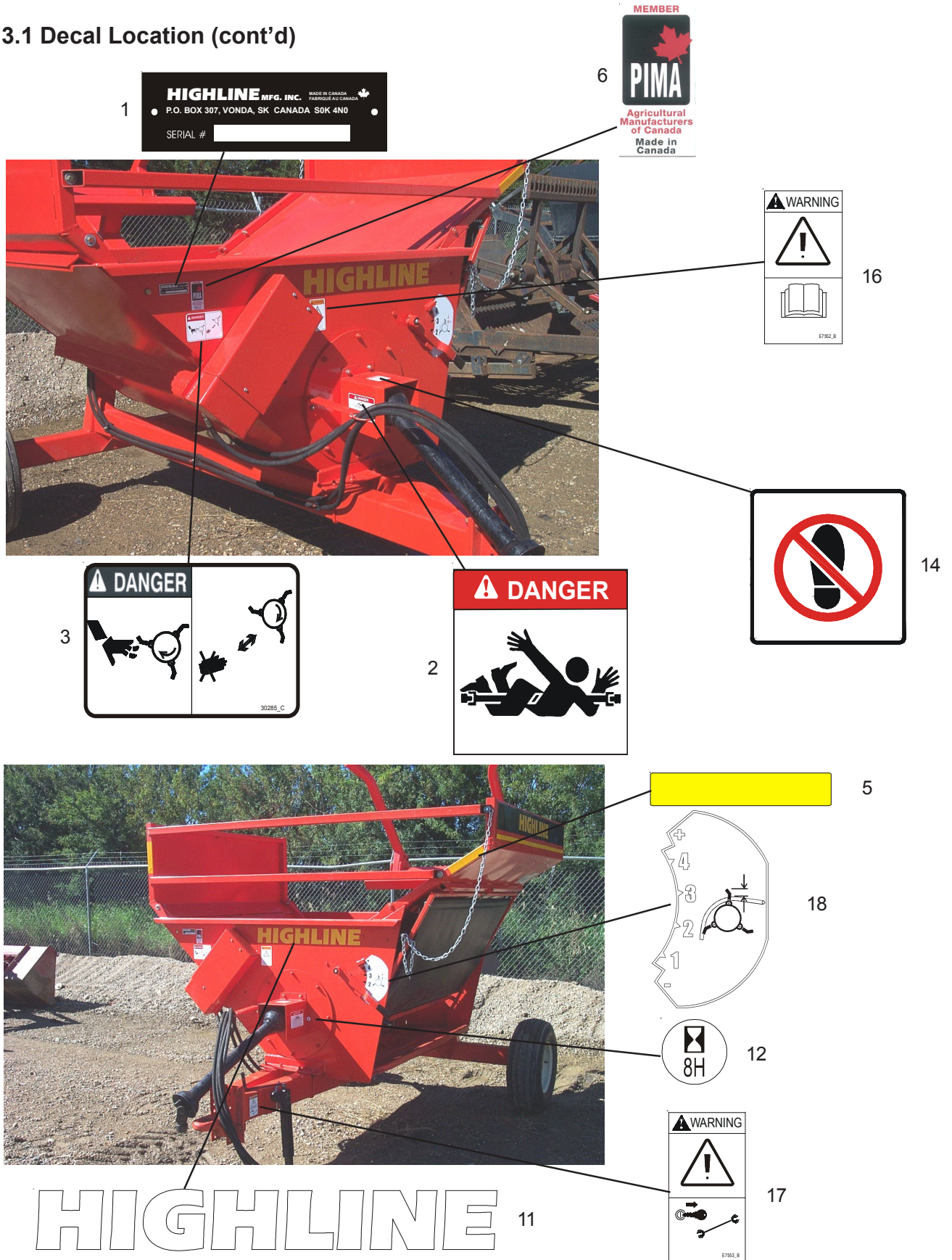
8



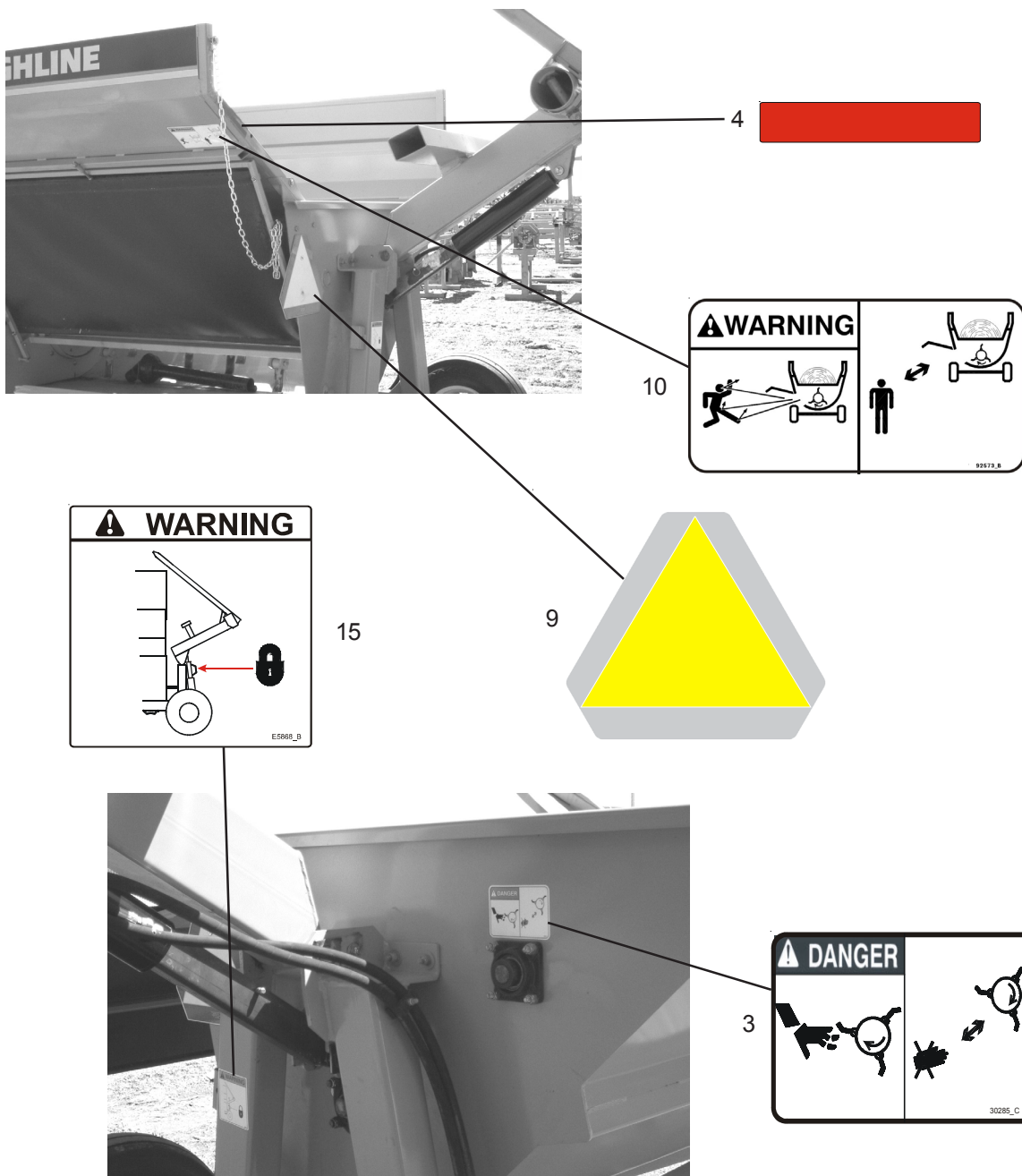
Bale Pro 4065

19

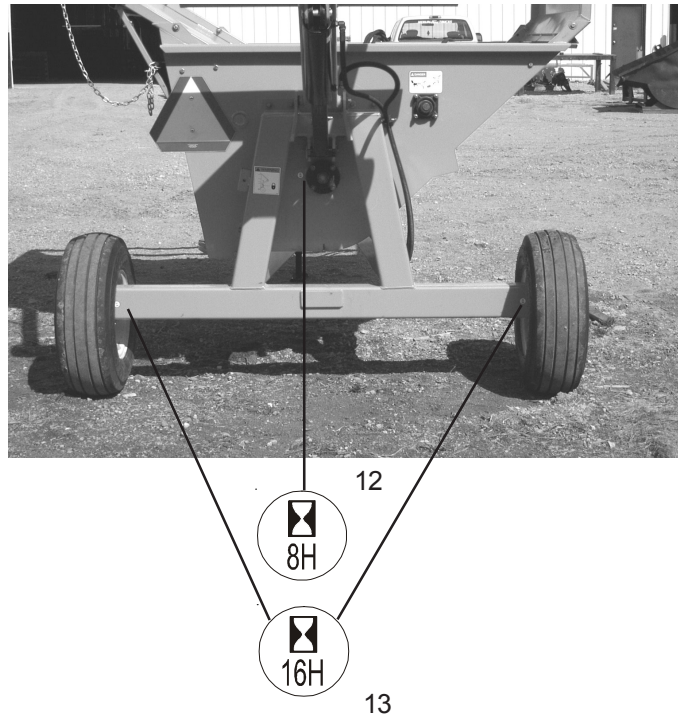
3.1 Decal Location (cont'd)



3.1 Decal Location (cont'd)



3.1 Decal Location (cont'd)



3.2 Safety Lock Locations

1. Discharge Door - Transport Position



Safety / Transport Lock

Retaining pin storage location

2. Discharge Door - Working Position



Safety Lock with Retaining Pin

3. Loading Dump - Transport Position.



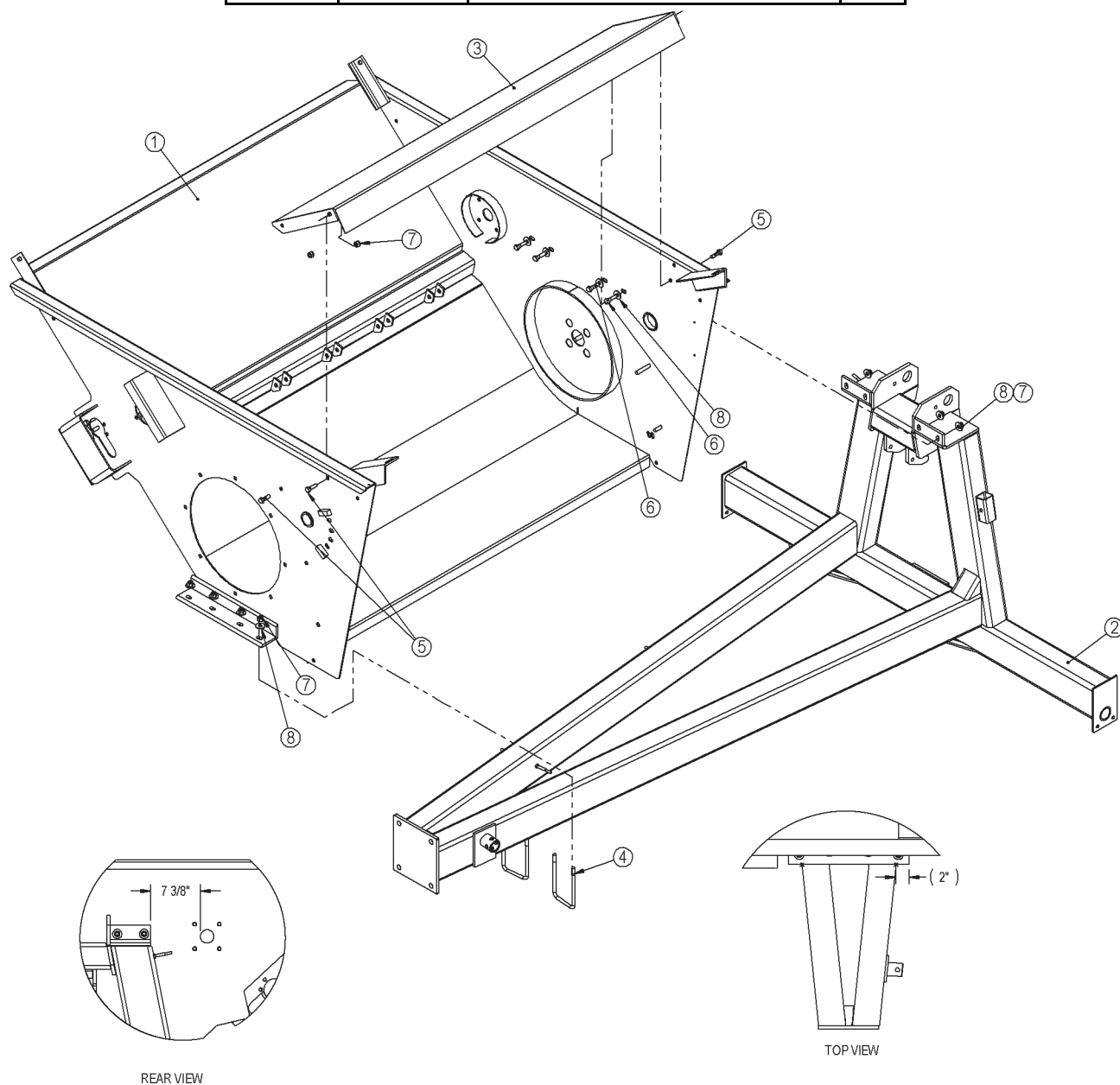
Safety Lock Storage Position

Safety / Transport Lock
with Retaining Pin

4.0 Parts Information

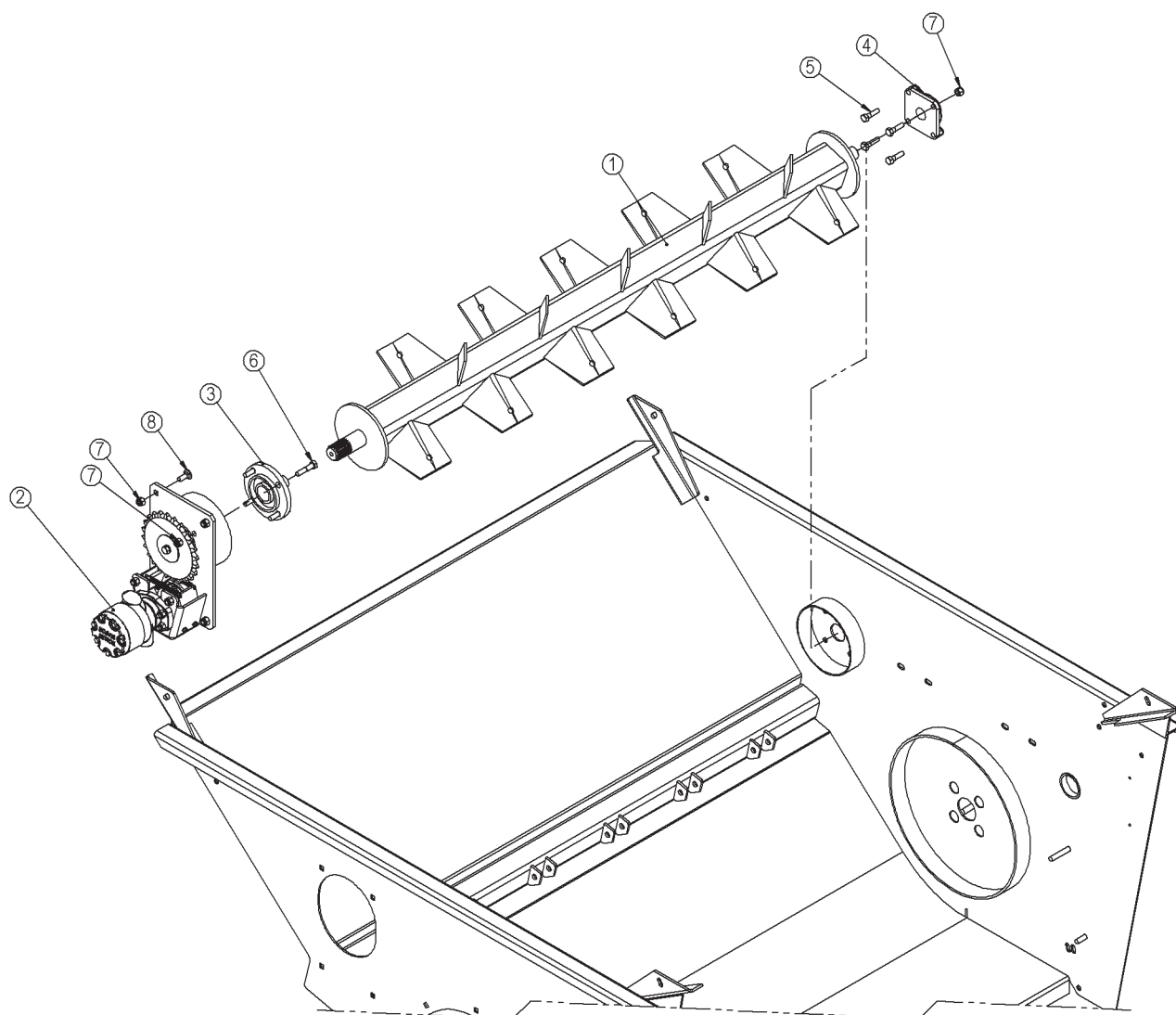
4.1 Tub and Frame Assembly (Part No. 49932)

ITEM NO.	PART NO.	DESCRIPTION	QTY.
1	49669	WLD,TUB,BP4065	1
2	49905	WLDT,FRAME,BP	1
3	49943	WLDT,PANEL,INNER	1
4	31945	BOLT,U,SQ,1/2-13X4X7-1/2	2
5	31016	BOLT,HEX,1/2X1-1/2,UNC,GR5,ZP	3
6	31017	BOLT,HEX,1/2X1-3/4,UNC,GR5,ZP	4
7	31173	NUT,NYLOCK,1/2,UNC,ZP	11
8	31236	WASHER,FLAT,1/2,ZP	12



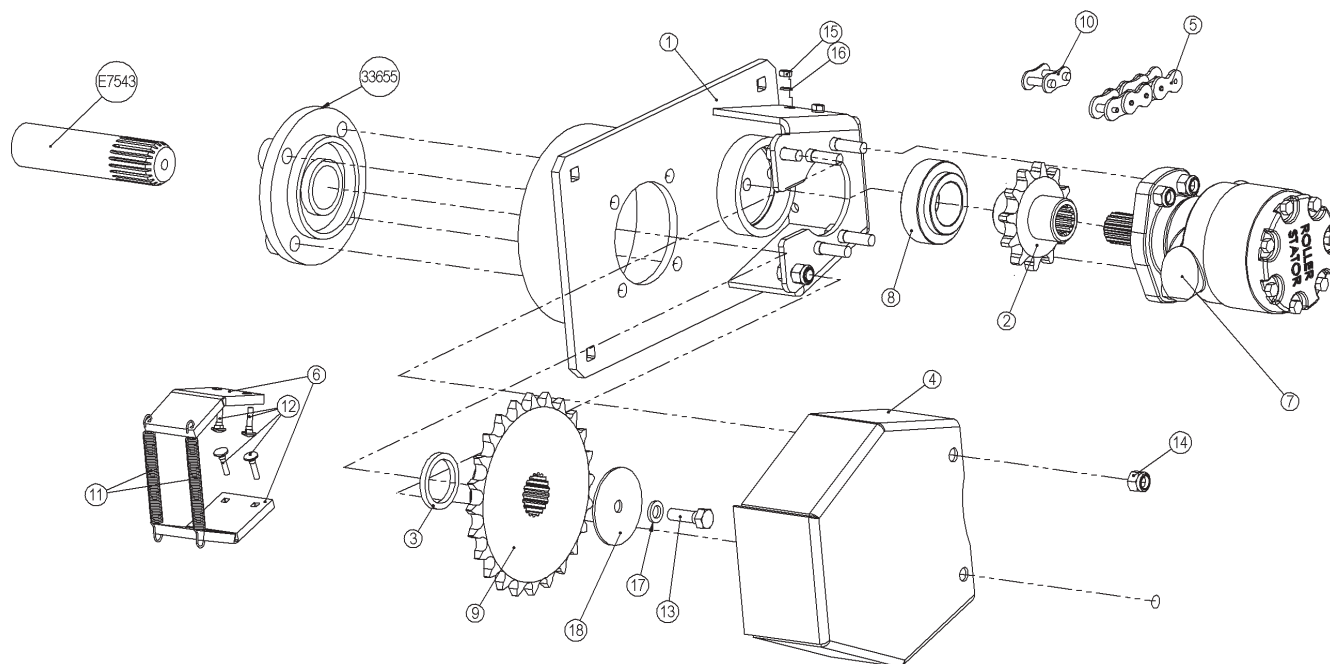
4.2A Feed Roller Assembly (Part No. 49914)**USE FOR MACHINES UP TO AND INCLUDING SERIAL NUMBER BP40650755**

ITEM NO.	PART NO.	DESCRIPTION	QTY.
1	49913	WLDT, FEED_ROLL	1
2	49917	ASSY,DRIVE,FEEDROLLER	1
3	33655	BEARING,CARTRIDGE,FLANGE,1-3/4"	1
4	92094	DRV, BRG, FLANGE, 1-3/8"	1
5	31017	BOLT,HEX,1/2X1-3/4,UNC,GR5,ZP	4
6	31150	BOLT,HEX,1/2X2-1/4,UNC,GR5,ZP	4
7	31173	NUT,NYLOCK,1/2,UNC,ZP	12
8	31154	BOLT,CARR,1/2X1-1/4,UNC,GR5,ZP	4



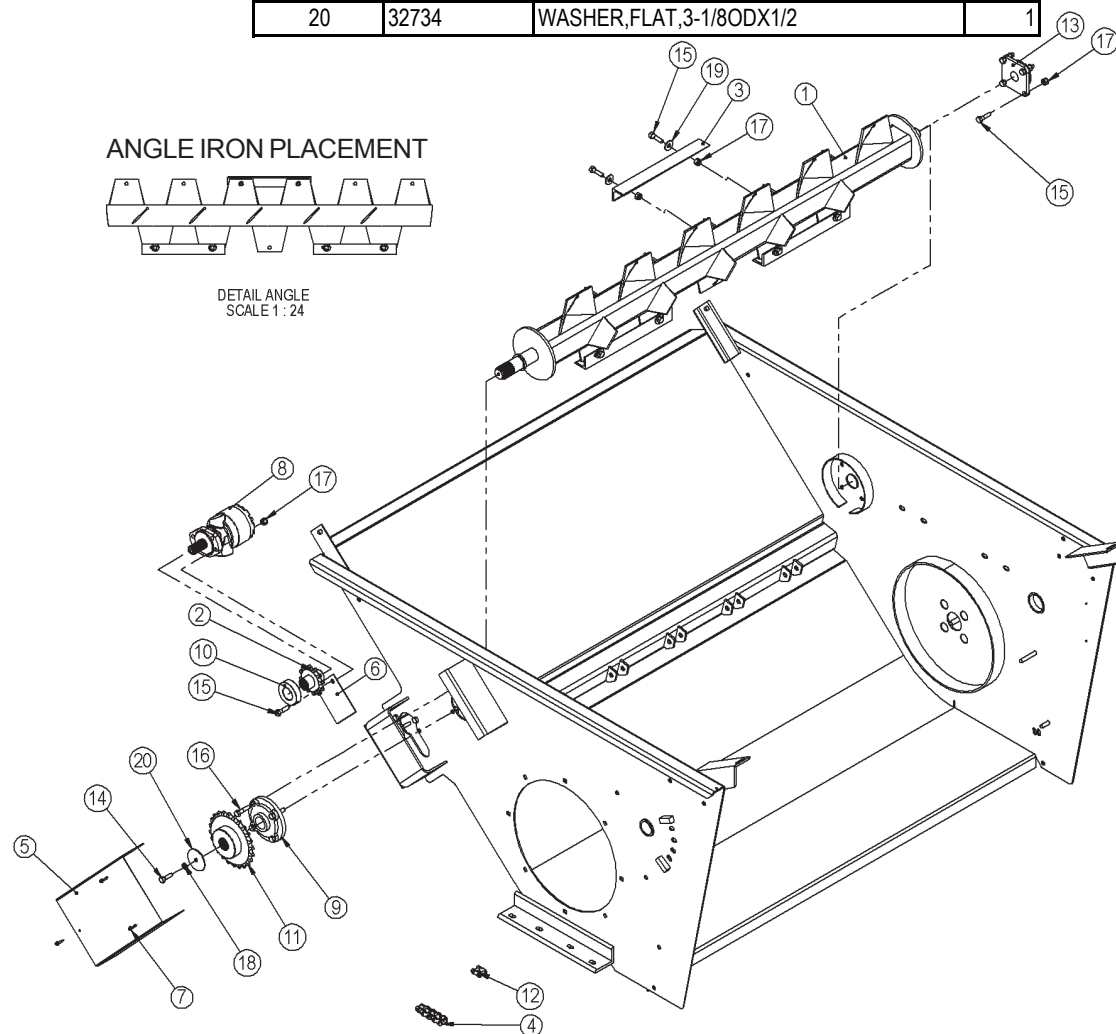
4.2A.1 Feed Roller Drive (Part No. 49917)**USE FOR MACHINES UP TO AND INCLUDING SERIAL NUMBER BP40650755**

ITEM NO.	PART NO.	DESCRIPTION	QTY.
1	49916	WLDT,MOUNT,BRG_TWINE_MOTOR	1
2	75437	DRV,SPROCKET,COUPLING,SPLINE	1
3	E6405	PIPE,SMLS,2-1/4x.240x1/4L	1
4	E7386	GUARD,FEEDROLLER_CHAIN	1
5	E7542	CHAIN,ROLLER,#80,15 LINKS	1
6	E8054	BLOCK,GUIDE,CHAIN	2
7	33377	HYD,MOTOR,22.8,3000PSI	1
8	33656	BEARING,INSRT,1-3/4 B,85mmOD	1
9	33658	DRV,SPRKT,#80,24,1-3/4-20SPL	1
10	33659	CHAIN,CONNECTOR_LINK,#80	1
11	33679	SPRING,EXT,31/64ODX5-1/4X.063	2
12	31012	BOLT,CARR,1/4X1,UNC,GR5,ZP	4
13	31016	BOLT,HEX,1/2X1-1/2,UNC,GR5,ZP	1
14	31173	NUT,NYLOCK,1/2,UNC,ZP	6
15	31164	NUT,HEX,1/4,UNC,GR5,ZP	4
16	31245	WASHER,LOCK,1/4,ZP	4
17	31244	WASHER,LOCK,1/2,ZP	1
18	32734	WASHER,FLAT,3-1/8ODX1/2	1



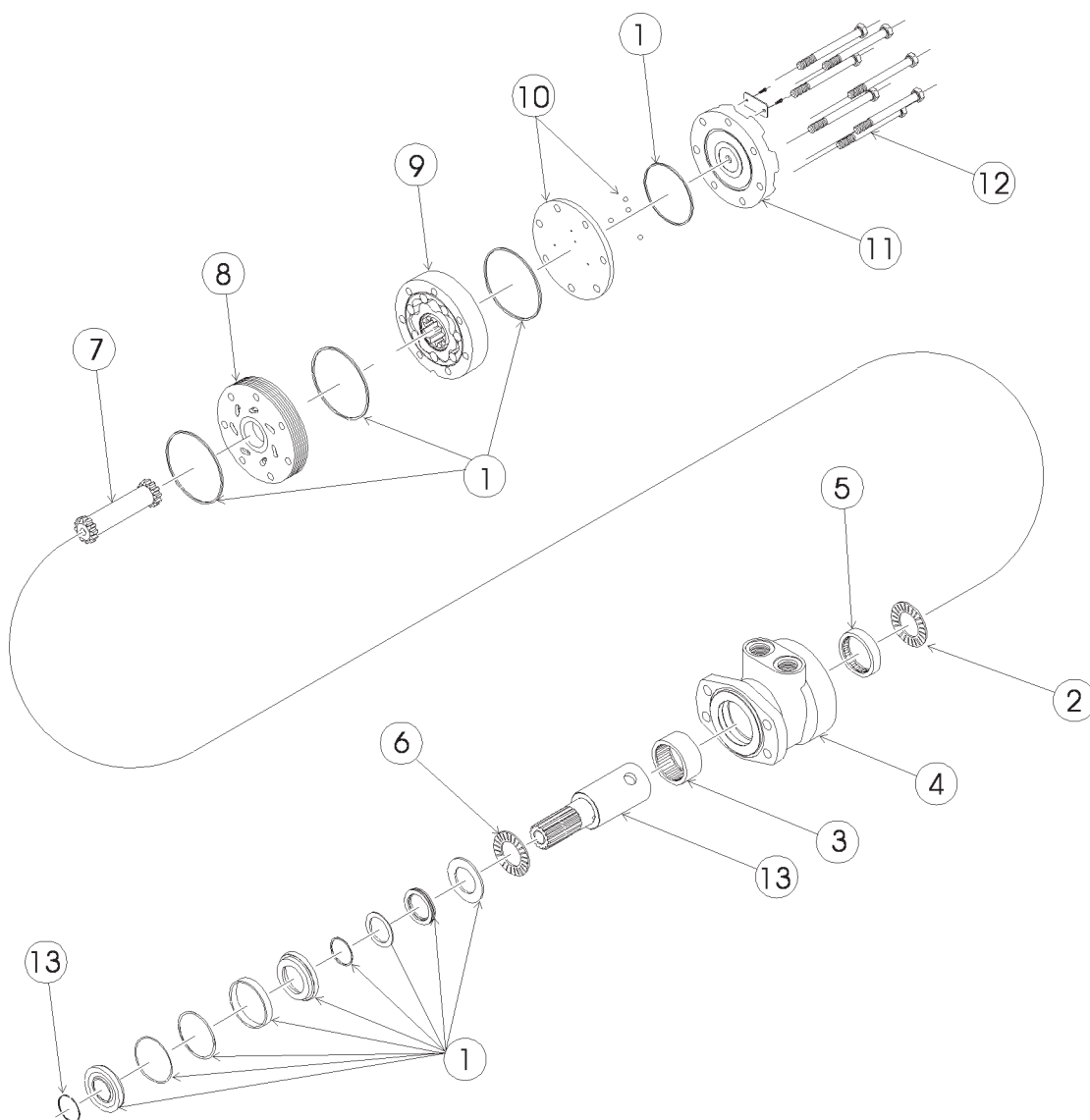
4.2B Feed Roller Assembly (Part No. 49674)**USE FOR MACHINES WITH SERIAL NUMBER BP40650756 AND HIGHER**

ITEM NO.	PART NO.	DESCRIPTION	QTY.
1	49673	WLDT, FEED_ROLL	1
2	75437	DRV, SPROCKET, COUPLING, SPLINE	1
3	E8540	ANGLE, TURN, BALE	3
4	E8585	CHAIN, ROLLER, #80, 22 LINKS	1
5	E8587	COVER, DRIVE, FROLL	1
6	E8588	PLATE, GUARD, FINGER	1
7	30294	SCREW, TEK, 1/4X1	3
8	33377	HYD, MOTOR, 22.8, 3000PSI	1
9	33655	BEARING, CARTRIDGE, FLANGE, 1-3/4"	1
10	33656	BEARING, INSRT, 1-3/4 B, 85mmOD	1
11	33658	DRV, SPRKT, #80, 24, 1-3/4-20SPL	1
12	33659	CHAIN, CONNECTOR_LINK, #80	1
13	92094	DRV, BRG, FLANGE, 1-3/8"	1
14	31016	BOLT, HEX, 1/2X1-1/2, UNC, GR5, ZP	1
15	31017	BOLT, HEX, 1/2X1-3/4, UNC, GR5, ZP	12
16	31070	BOLT, HEX, 1/2X2, UNC, GR5, ZP	4
17	31173	NUT, NYLOCK, 1/2, UNC, ZP	14
18	31244	WASHER, LOCK, 1/2, ZP	1
19	31236	WASHER, FLAT, 1/2, ZP	6
20	32734	WASHER, FLAT, 3-1/8ODX1/2	1



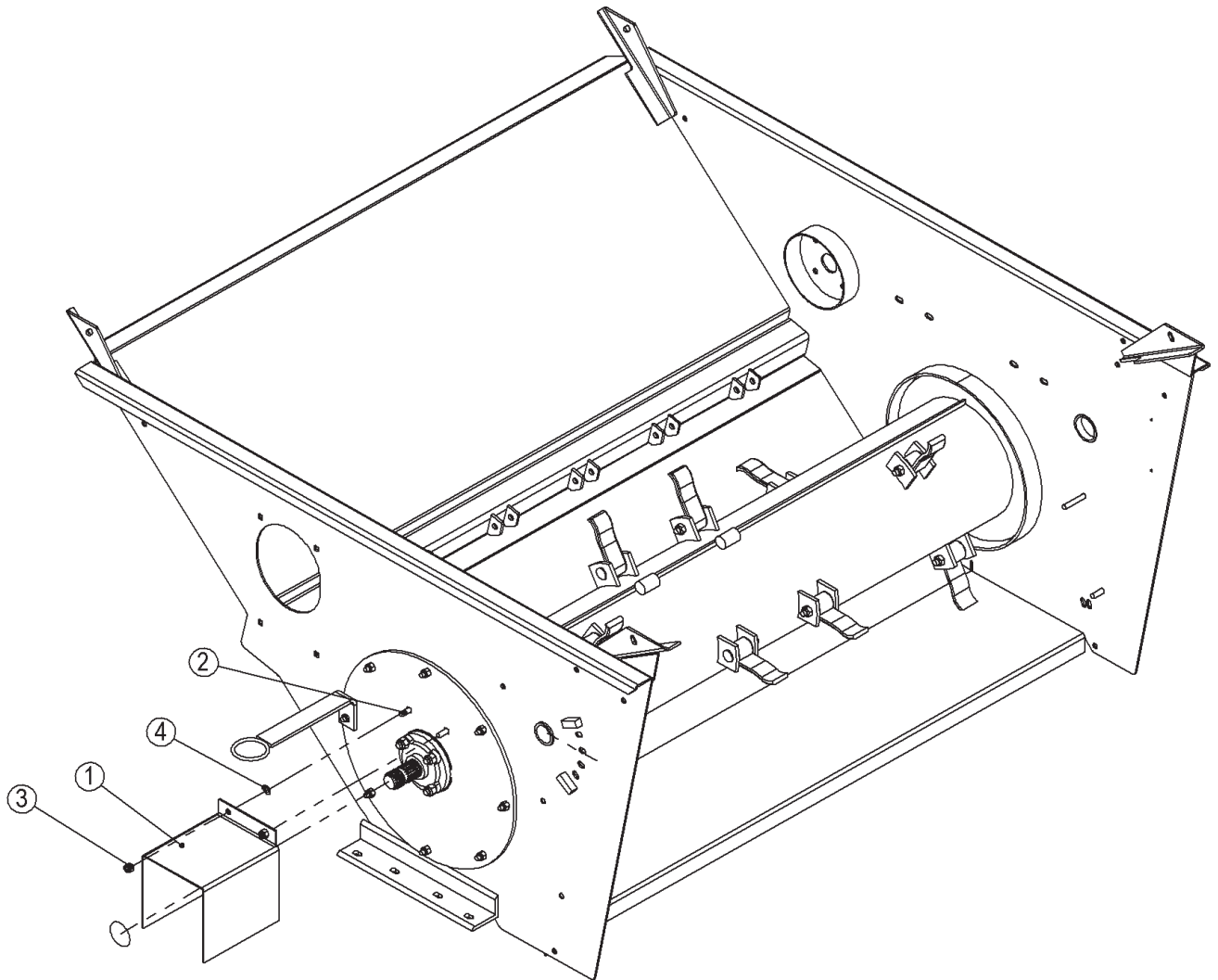
4.2.2 Hydraulic Motor (Part No. 33377)

ITEM NO.	PART NO.	DESCRIPTION	QTY.
1	32647	SEAL KIT,ROLLER STATOR	1
2	32651	BEARING,THRUST,REAR	1
3	32720	BEARING,HOUSING,FRONT	1
4	33653	HOUSING KIT	1
5	32649	BEARING,HOUSING,REAR,1/2	1
6	32639	BEARING,THRUST,FRONT	1
7	32722	DRIVE LINK KIT	1
8	32725	SHAFT KIT	1
9	33652	ROTOR KIT	1
10	32726	BALANCE PLATE & BALLS	1
11	32727	END COVER	1
12	33654	BOLT KIT	1
13	32653	SHAFT KIT	1



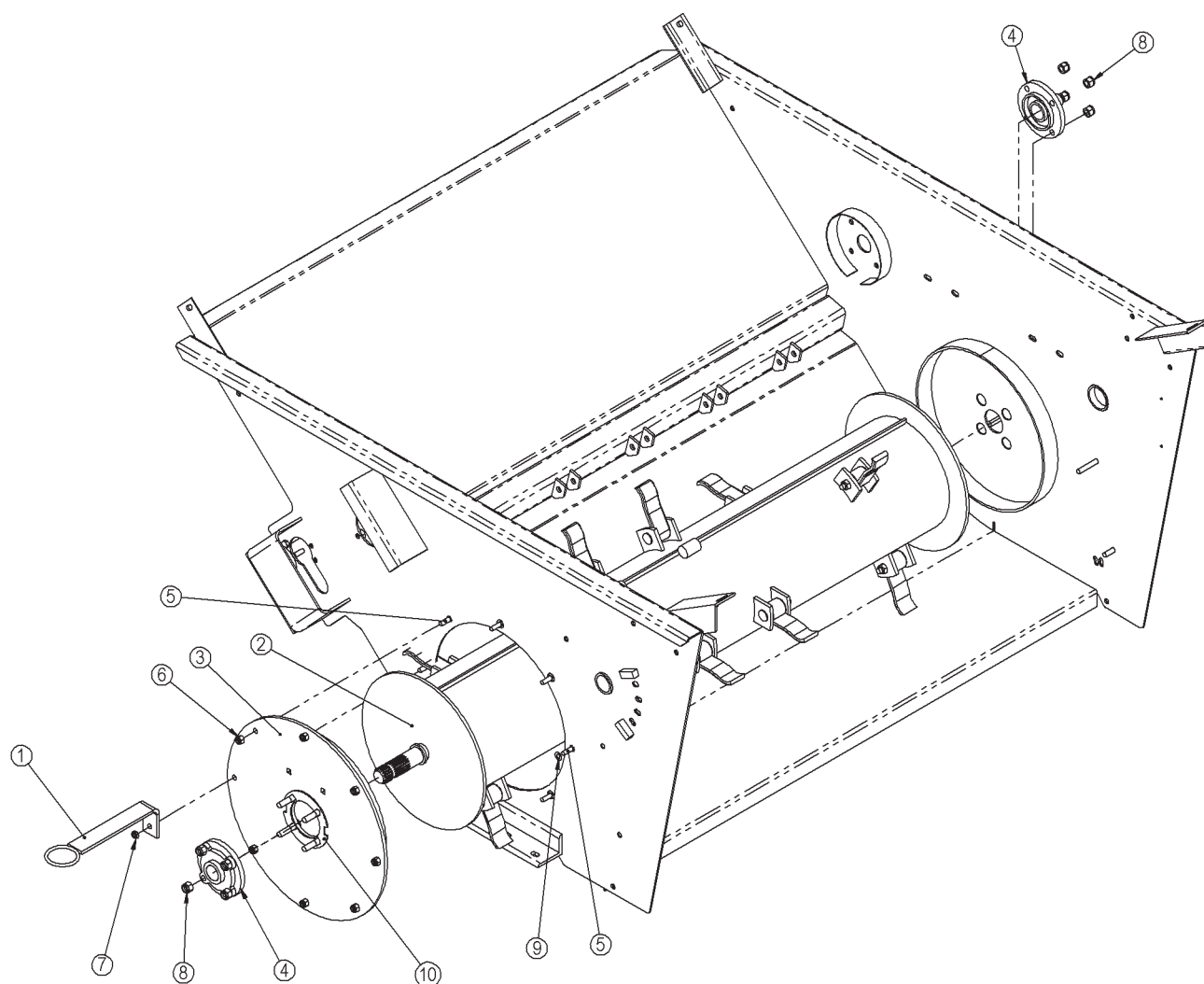
4.3 Driveline Guard Assembly (Part No. 49944)

ITEM NO.	PART NO.	DESCRIPTION	QTY.
1	E8511	GUARD,DRIVELINE	1
2	31008	BOLT,CARR,1/2X1-1/2,UNC,GR5,ZP	2
3	31173	NUT,NYLOCK,1/2,UNC,ZP	2
4	31894	RETAINER,BOLT,1/2	2



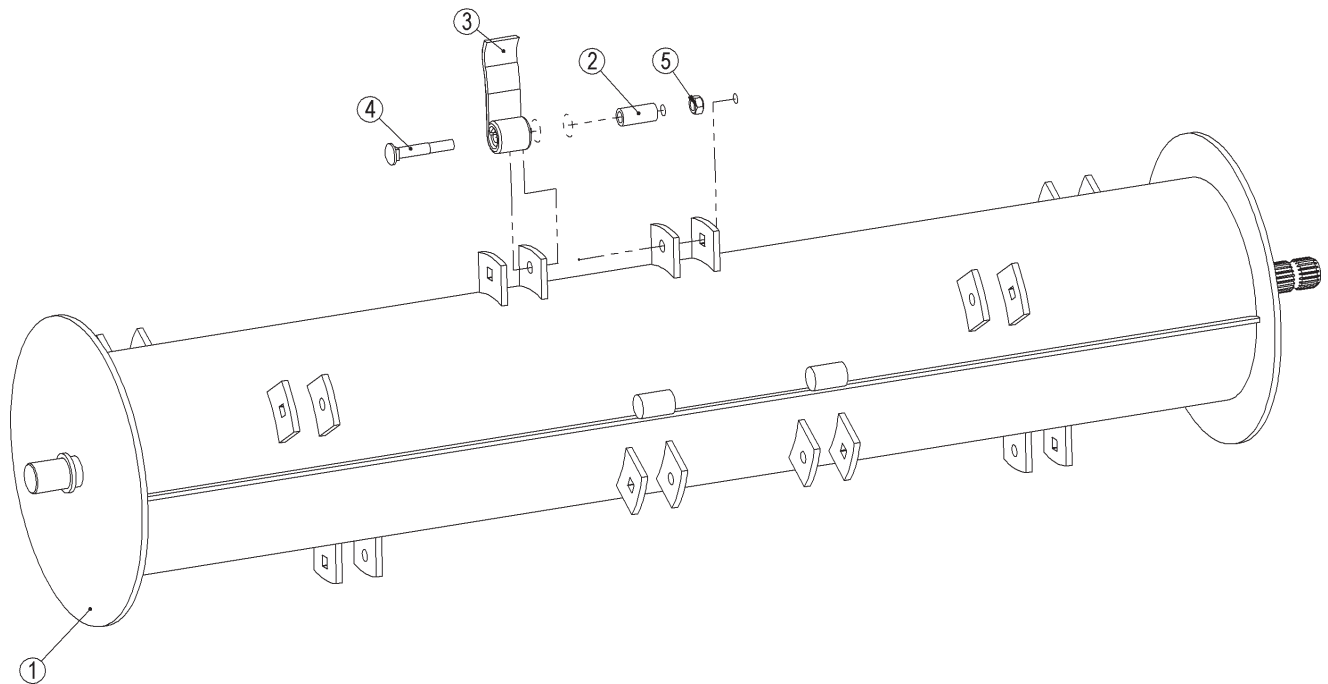
4.4 Flail Drum Installation (Part No. 49933)

ITEM NO.	PART NO.	DESCRIPTION	QTY.
1	49659	WLDT,HOLDER,HOSE	1
2	49908	ASSY,FLAIL DRUM	1
3	49918	WLDT,PLT,INSTALL,FLAIL_DRUM	1
4	33655	BEARING,CARTRIDGE,FLANGE,1-3/4"	2
5	31008	BOLT,CARR,1/2X1-1/2,UNC,GR5,ZP	8
6	31173	NUT,NYLOCK,1/2,UNC,ZP	7
7	30611	NUT,NYLOCK,JAM,1/2,UNC,ZP	1
8	31178	NUT,NYLOCK,5/8,UNC,ZP	8
9	31894	RETAINER,BOLT,1/2	8
10	E6982	SPACER,BEARING,DRUM.FLAIL	1



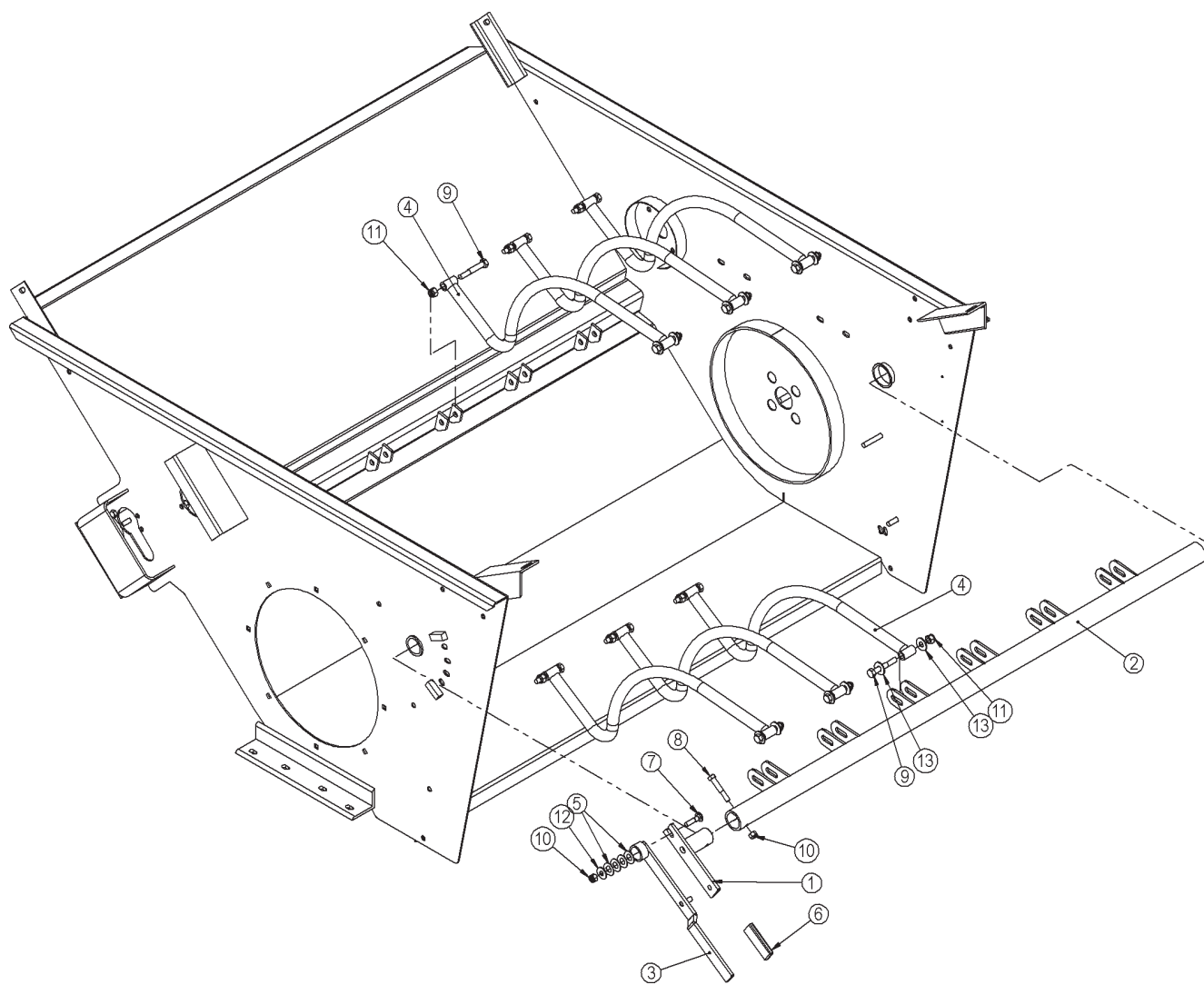
4.4.1 Flail Drum Assembly (Part No. 49908)

ITEM NO.	PART NO.	DESCRIPTION	QTY.
1	49907	WLDT,DRUM,FLAIL,6',1 3/4 EXT SPLINE	1
2	E2083	PIPE,DOM,1x.180x2-1/8L,HARD	12
3	E3714	FLAIL	12
4	33696	BOLT,CARR,5/18X3-3/4,UNF,GR8,BLACK	12
5	31170	NUT,LOCK,STOVER,5/8,UNF,ZP	12



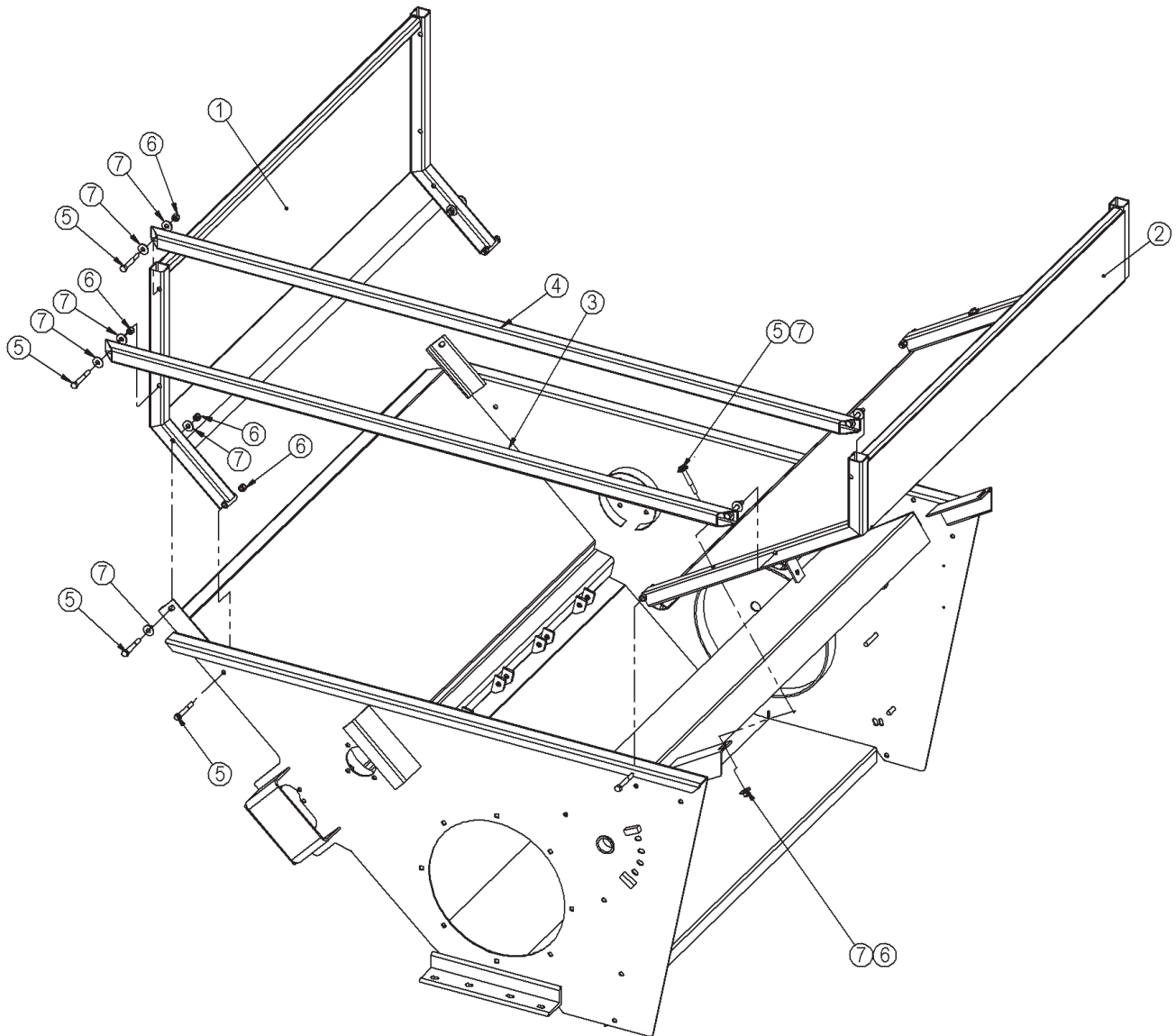
4.5 Flail Guard Rod Assembly (Part No. 49934)

ITEM NO.	PART NO.	DESCRIPTION	QTY.
1	49516	WLDT,PIN, ADJUSTMENT,FGR	1
2	49921	WLDT,BAR,ADJ,GUARD,FLAIL	1
3	49928	WLDT,HANDLE,FGR	1
4	49947	WLDT,GUARD_ROD	6
5	31668	WASHER,SPRING,3/4,342	4
6	92127	COVER,VINYL,3/8X1-1/2	1
7	31009	BOLT,CARR,1/2X2,UNC,GR5,ZP	1
8	31021	BOLT,HEX,1/2X3,UNC,GR5,ZP	1
9	31058	BOLT,HEX,9/16X3-1/2,UNC,GR5,ZP	12
10	31173	NUT,NYLOCK,1/2,UNC,ZP	2
11	31179	NUT,NYLOCK,9/16,UNC,ZP	12
12	31236	WASHER,FLAT,1/2,ZP	1
13	31242	WASHER,FLAT,9/16,ZP	12



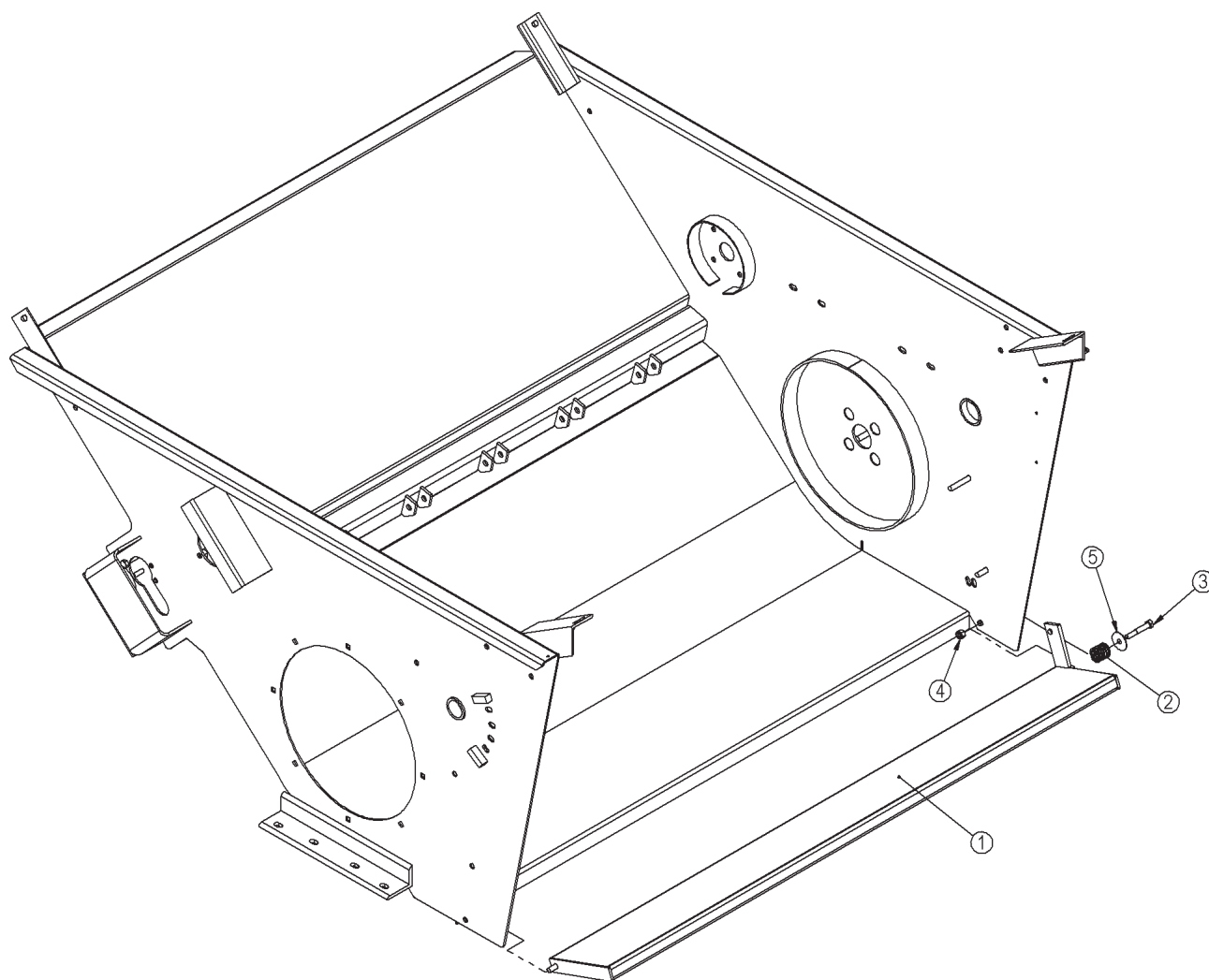
4.6 Bale Defelctor Assembly (Part No. 49935)

ITEM NO.	PART NO.	DESCRIPTION	QTY.
1	49910	WLDT,BALE_SHIELD	1
2	49912	WLDT,BALE_SHIELD,DISCHARGE	1
3	E8257	TUBE,SCREEN,BOTTOM	1
4	E8358	TUBE,SCREEN,TOP	1
5	31023	BOLT,HEX,1/2X3-1/2,UNC,GR5,ZP	12
6	31173	NUT,NYLOCK,1/2,UNC,ZP	12
7	31236	WASHER,FLAT,1/2,ZP	16



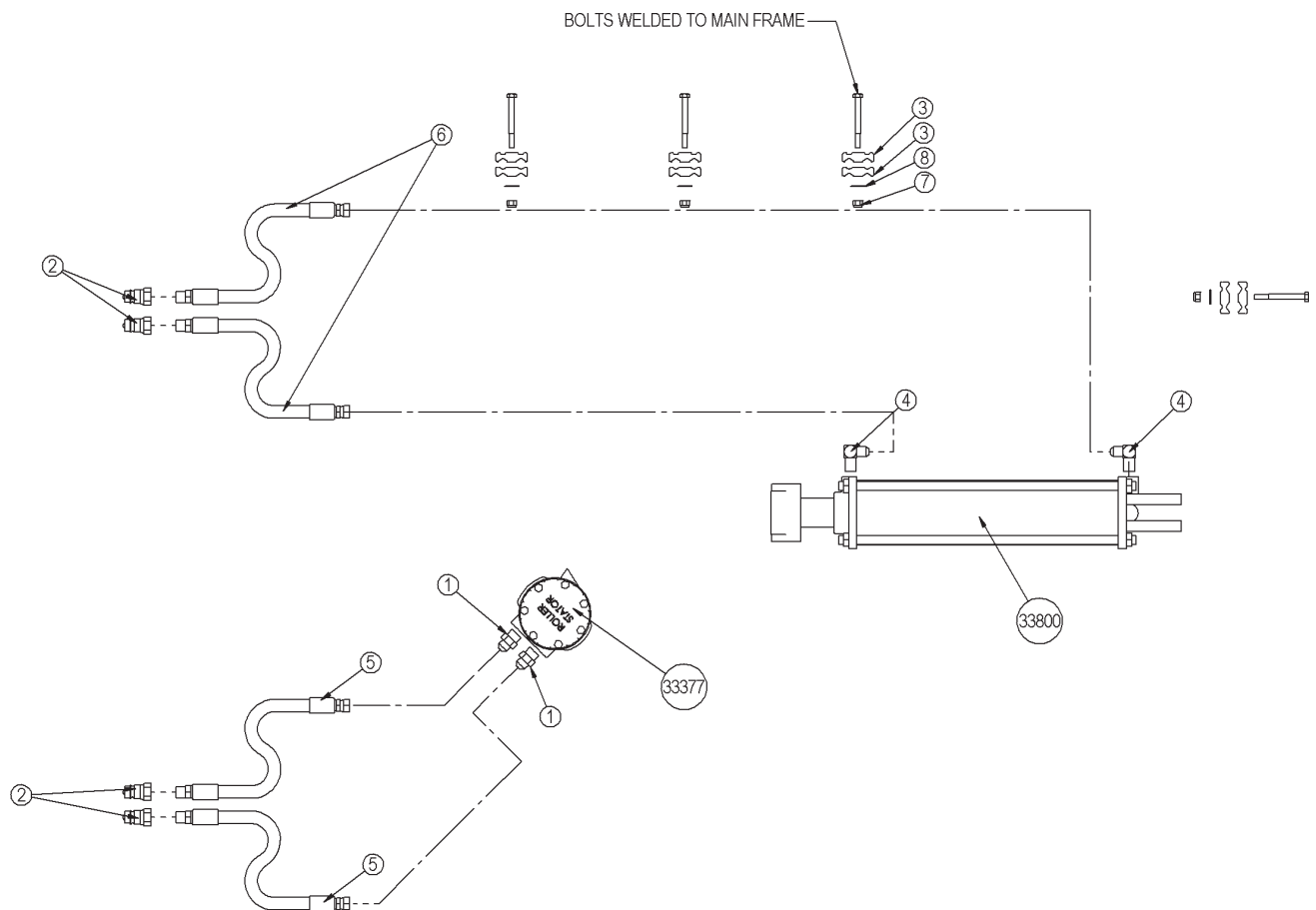
4.7 Bottom Discharge Door Assembly (Part No. 49936)

ITEM NO.	PART NO.	DESCRIPTION	QTY.
1	49924	WLDT,BOTTOM DIS DOOR	1
2	32998	SPRING,1.5X2.50X0.135	1
3	31021	BOLT,HEX,1/2X3,UNC,GR5,ZP	1
4	31173	NUT,NYLOCK,1/2,UNC,ZP	1
5	33889	WASHER,FLAT,1/2X2OD,ZP	1



4.8 Hydraulic Assembly (Part No. 49938)

ITEM NO.	PART NO.	DESCRIPTION	QTY.
1	30204	HYD,FIT,ADAPTER,10MB-8MJ	2
2	30209	HYD,FIT,PIONEER,MALE,8FP	4
3	30210	HYD,CLAMP,HOSE,1/2	8
4	30211	HYD,FIT,ELBOW,8MB-8MJ90	2
5	33893	HYD,HOSE,1/2X102,8MP-8FJX,2W	2
6	33894	HYD,HOSE,3/8X234,8MP-8FJX,2W	2
7	31176	NUT,NYLOCK,3/8,UNC,ZP	4
8	31351	WASHER,FLAT,3/8,ZP	4

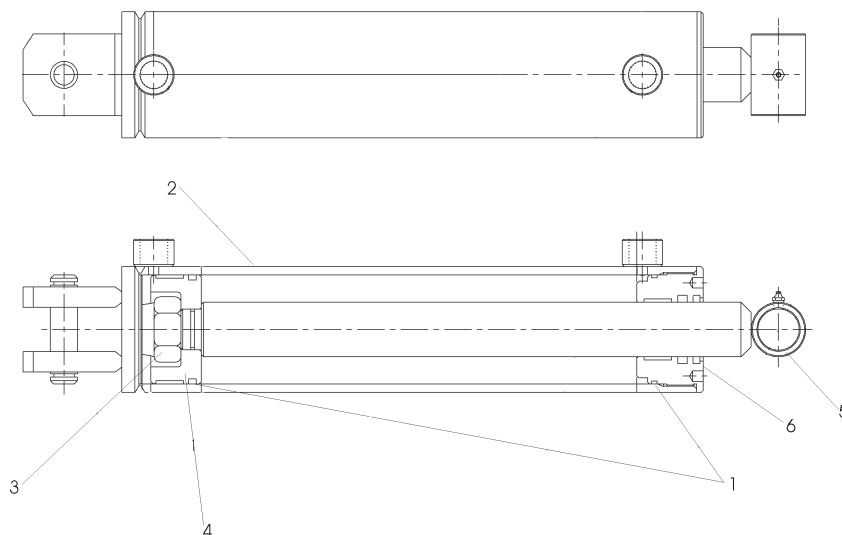


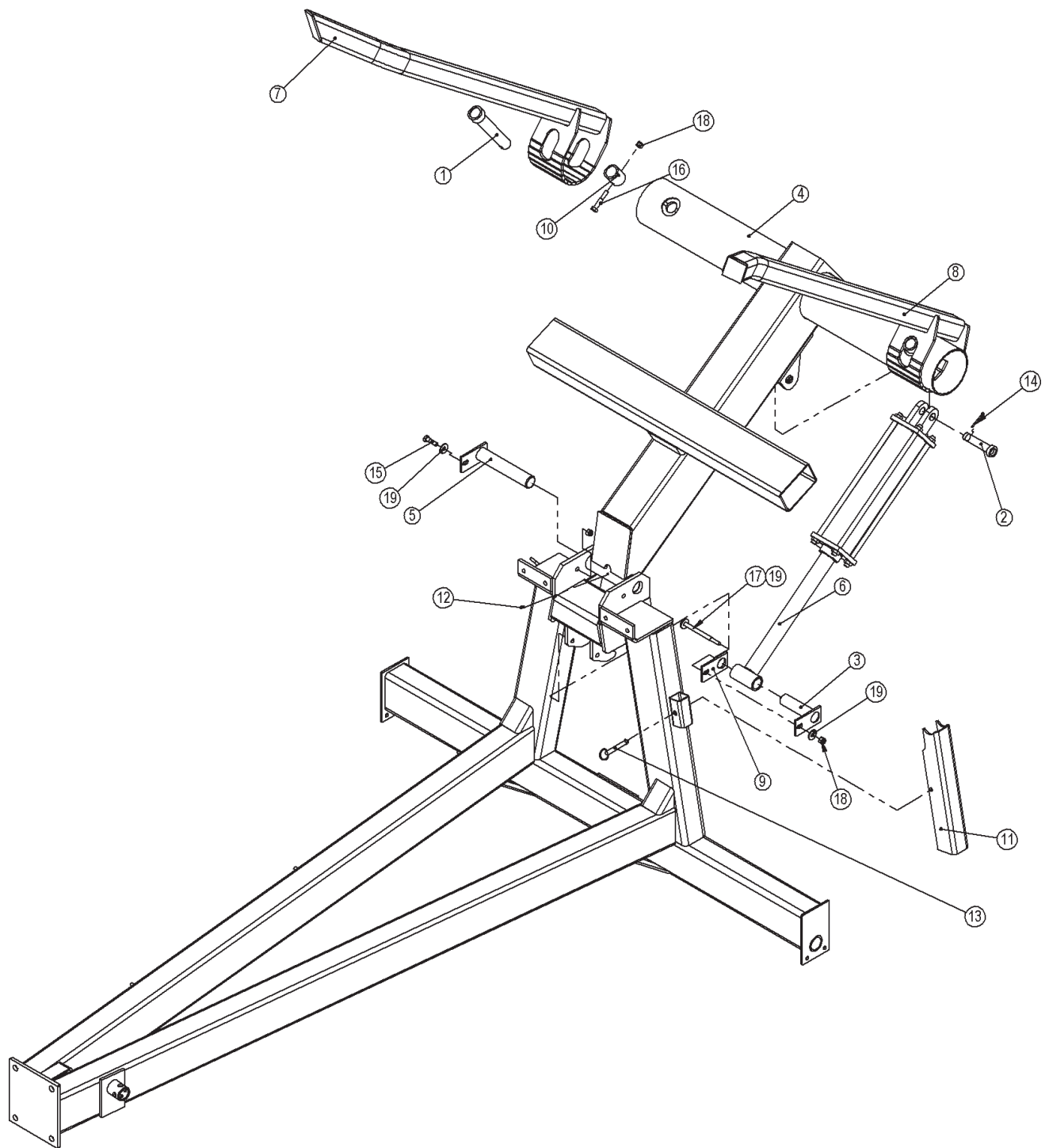
4.9A Loading Forks and Frame Assembly (Part No. 49937)**USE FOR MACHINES UP TO AND INCLUDING SERIAL NUMBER BP40650755**

ITEM NO.	PART NO.	DESCRIPTION	QTY.
1	49379	PIN,FLOAT,FORK	2
2	49668	WLDT,PIN,CYL,1X4-5/16U	1
3	49665	PIN,ANTIROTATE,1-1/2X5-9/16	1
4	49906	FRAME,LIFT	1
5	49919	PIN,ANTIROTATE,1-3/4DIA	1
6	33800	HYD,CYL,4.0X16,CLVXTUBE,8FBIL	1
7	49948	WLDT,FORK,RIGHT	1
8	49949	WLDT,FORK,LEFT	1
9	E6250	PLT,ANTIROTATION,1-1/2D	1
10	E6087	BUSHING,PIN,FORK,HOLE	2
11	E8521	LOCK,CYL,CHANNEL	1
12	30207	ZERK,1/4-28,GF641,STRAIGHT	1
13	31813	PIN,QUICK RELEASE,1/2X3,ZP	1
14	31183	PIN,COTTER,3/16X2	1
15	31017	BOLT,HEX,1/2X1-3/4,UNC,GR5,ZP	1
16	31020	BOLT,HEX,1/2X2-3/4,UNC,GR5,ZP	2
17	31599	BOLT,HEX,1/2X6-1/2,UNC,GR5,ZP	1
18	31173	NUT,NYLOCK,1/2,UNC,ZP	4
19	31236	WASHER,FLAT,1/2,ZP	3

4.9.1 Cylinder Assembly (Part No. 33800)

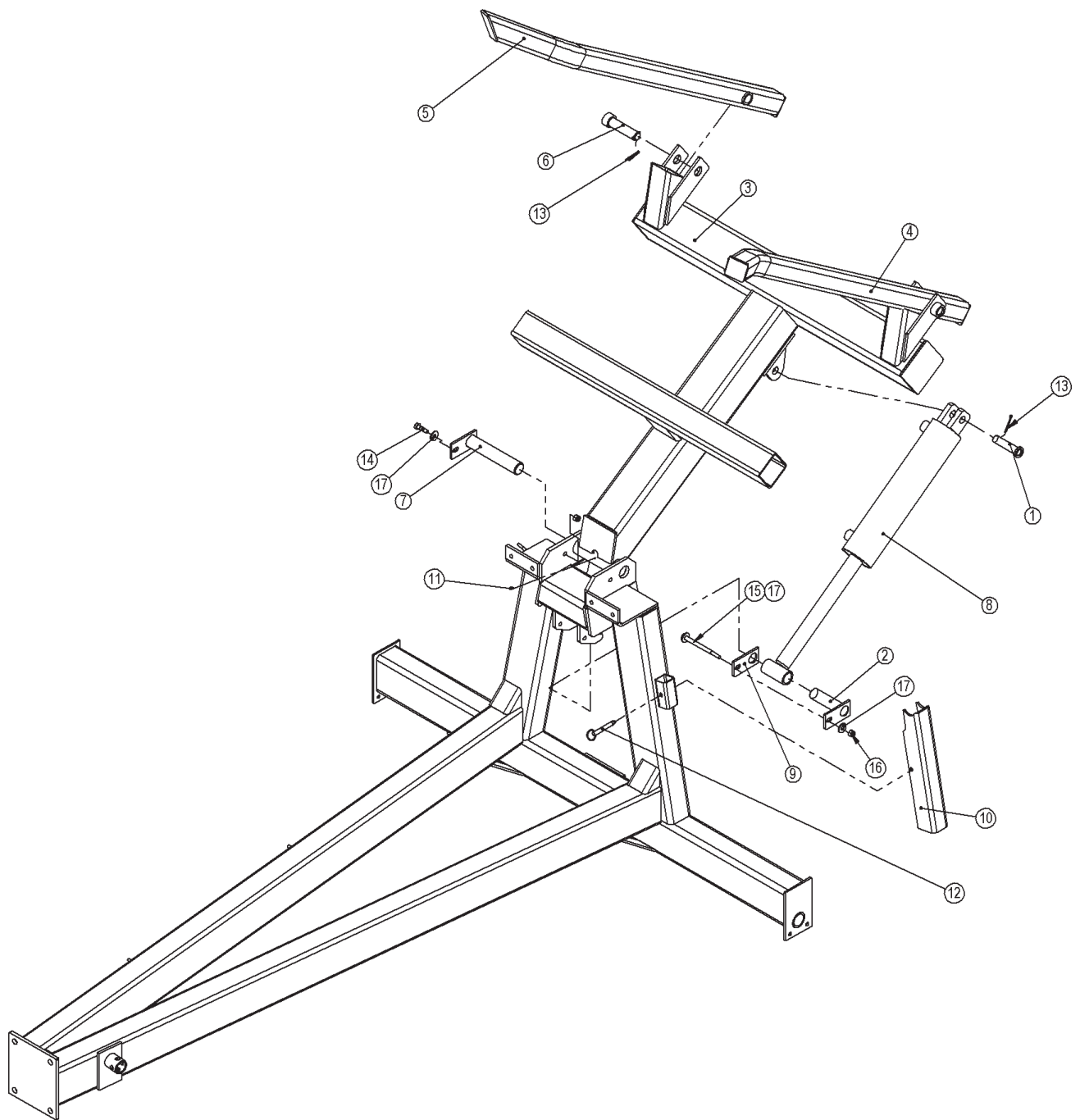
ITEM NO.	PART NO.	DESCRIPTION	QTY.
1	33866	HYD,CYL,SEALKIT,4x2	1
2	33867	HYD,CYL,TUBE,4X16,8FB,IL	1
3	33868	HYD,CYL,NUT	1
4	33869	HYD,CYL,PISTON,4	1
5	33870	HYD,CYL,ROD,2X16,WLDCLV,1.5P	1
6	33871	HYD,CYL,CAP,ROD,4X2	1





4.9B Loading Forks and Frame Assembly (Part No. 49937)
USE FOR MACHINES WITH SERIAL NUMBER BP40650756 AND HIGHER

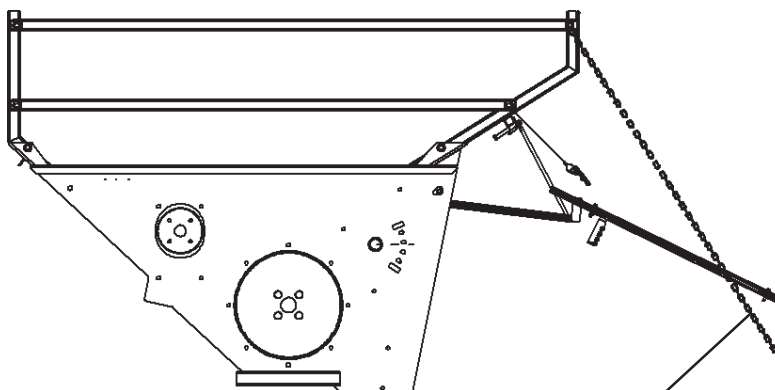
ITEM NO.	PART NO.	DESCRIPTION	QTY.
1	45185	PIN, CYL, TOP	1
2	49665	PIN,ANTIROTATE,1-1/2X5-9/16	1
3	49896	WLDT,FRAME,LIFT	1
4	49897	WLDT,FORK,LEFT	1
5	49898	WLDT,FORK,RIGHT	1
6	49899	WLDT,PIN,FORK,1-1/4DX4-7/16U	2
7	49919	PIN,ANTIROTATE,1-3/4DIA	1
8	33800	HYD,CYL,4.0X16,CLVXTUBE,8FBIL	1
9	E6250	PLT,ANTIROTATION,1-1/2D	1
10	E8521	LOCK,CYL,CHANNEL	1
11	30207	ZERK,1/4-28,GF641,STRAIGHT	1
12	31813	PIN,QUICK RELEASE,1/2X3,ZP	1
13	31183	PIN,COTTER,3/16X2	3
14	31017	BOLT,HEX,1/2X1-3/4,UNC,GR5,ZP	1
15	31599	BOLT,HEX,1/2X6-1/2,UNC,GR5,ZP	1
16	31173	NUT,NYLOCK,1/2,UNC,ZP	2
17	31236	WASHER,FLAT,1/2,ZP	3



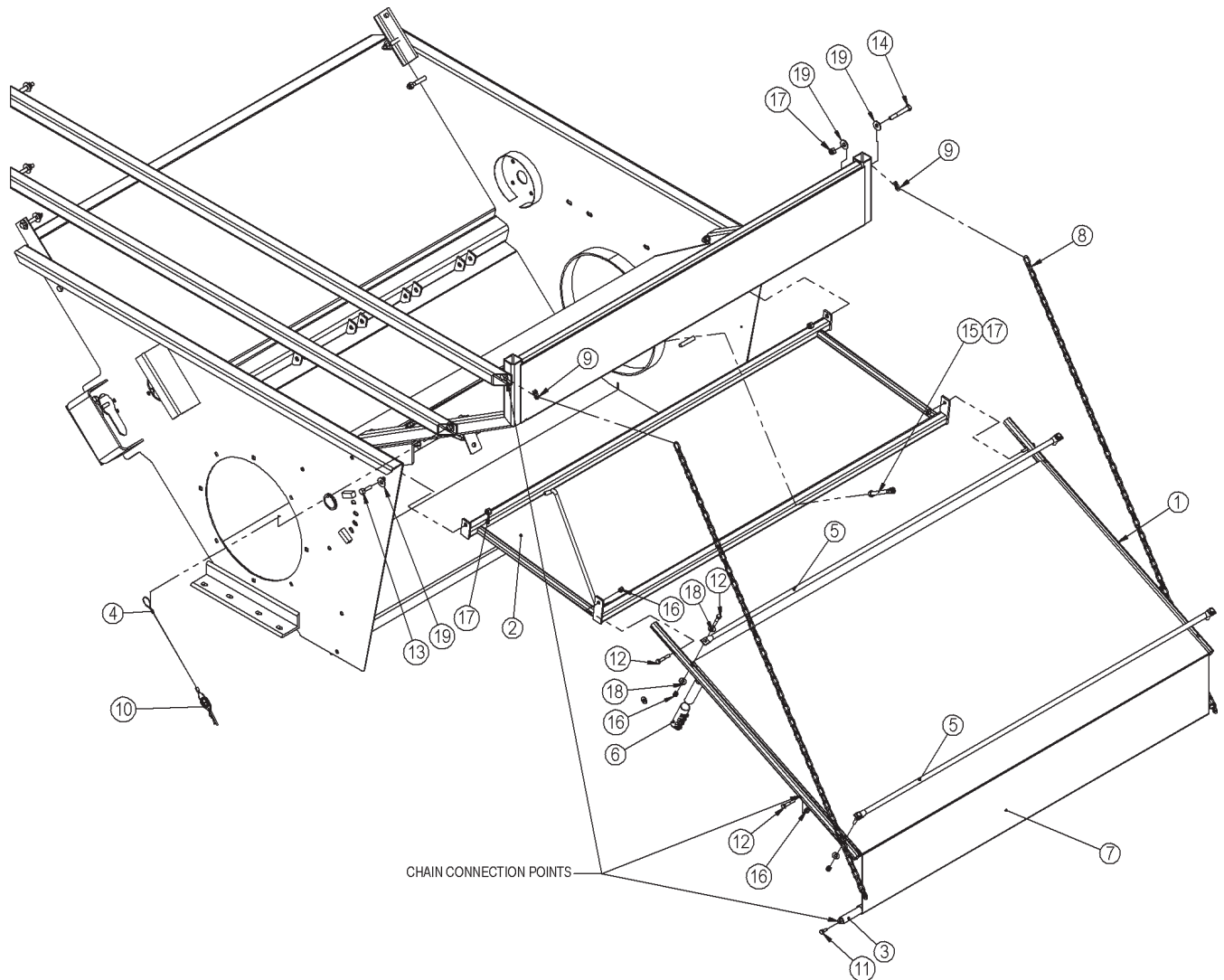
4.10 Upper Discharge Door Assembly (Part No. 49942)

ITEM NO.	PART NO.	DESCRIPTION	QTY.
1	49925	WLDT,FRAME,DOOR,CANVAS	1
2	49926	WLDT,FRAME,INNER_DOOR	1
3	49658	WLDT,BAR,WEIGHT	1
4	70632	TETHER,CABLE,12"	1
5	E8378	PIPE,ATTACH,CANVAS	2
6	31810	GRIP,HANDLE,1-1/4IDX4-1/2	1
7	33839	TARP,50X68-3/4,3_PKT,DISCHARGE	1
8	33862(11.1)	CHAIN,GR 30,3/16E,1.06X.45ID,ZP	1
9	33863	CHAIN,LAP_LINK,3/16,ZP	2
10	33873	PIN,HITCH,.2X3.625,DBL_LOOP,ZP	1
11	31345	BOLT,HEX,3/8X3/4,UNC,GR5,ZP	2
12	31067	BOLT,HEX,3/8X2,UNC,GR5,ZP	8
13	31016	BOLT,HEX,1/2X1-1/2,UNC,GR5,ZP	2
14	31023	BOLT,HEX,1/2X3-1/2,UNC,GR5,ZP	1
15	31028	BOLT,HEX,1/2X5,UNC,GR5,ZP	1
16	31176	NUT,NYLOCK,3/8,UNC,ZP	8
17	31173	NUT,NYLOCK,1/2,UNC,ZP	4
18	31351	WASHER,FLAT,3/8,ZP	10
19	31236	WASHER,FLAT,1/2,ZP	4

NOTE: PART NUMBER 70632 NOT USED IN MACHINES WITH SERIAL NUMBER BP40650756 AND HIGHER

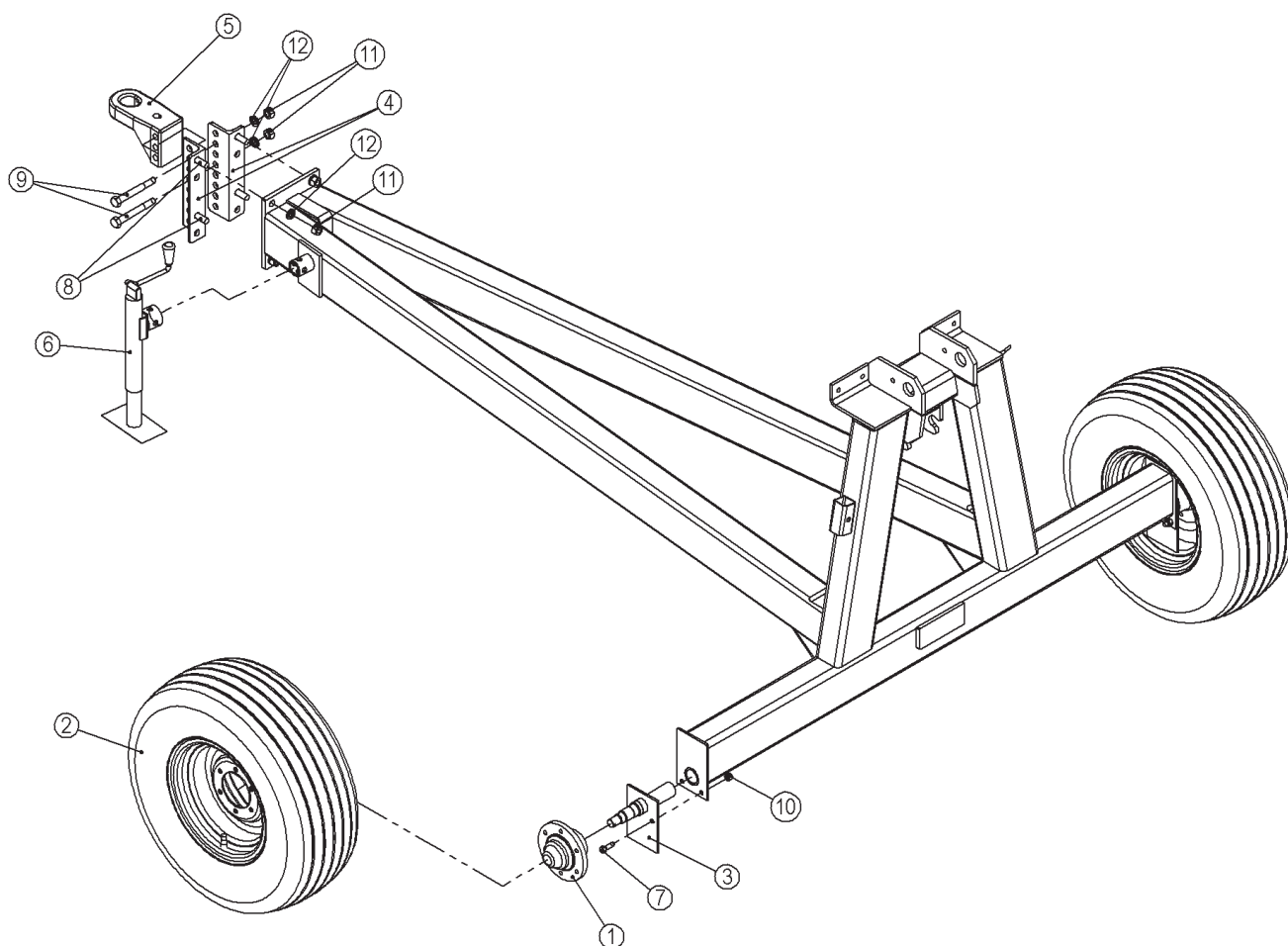


Note:
Mount Chain with 20 Links
between the door frame
and the canvas weight bar.



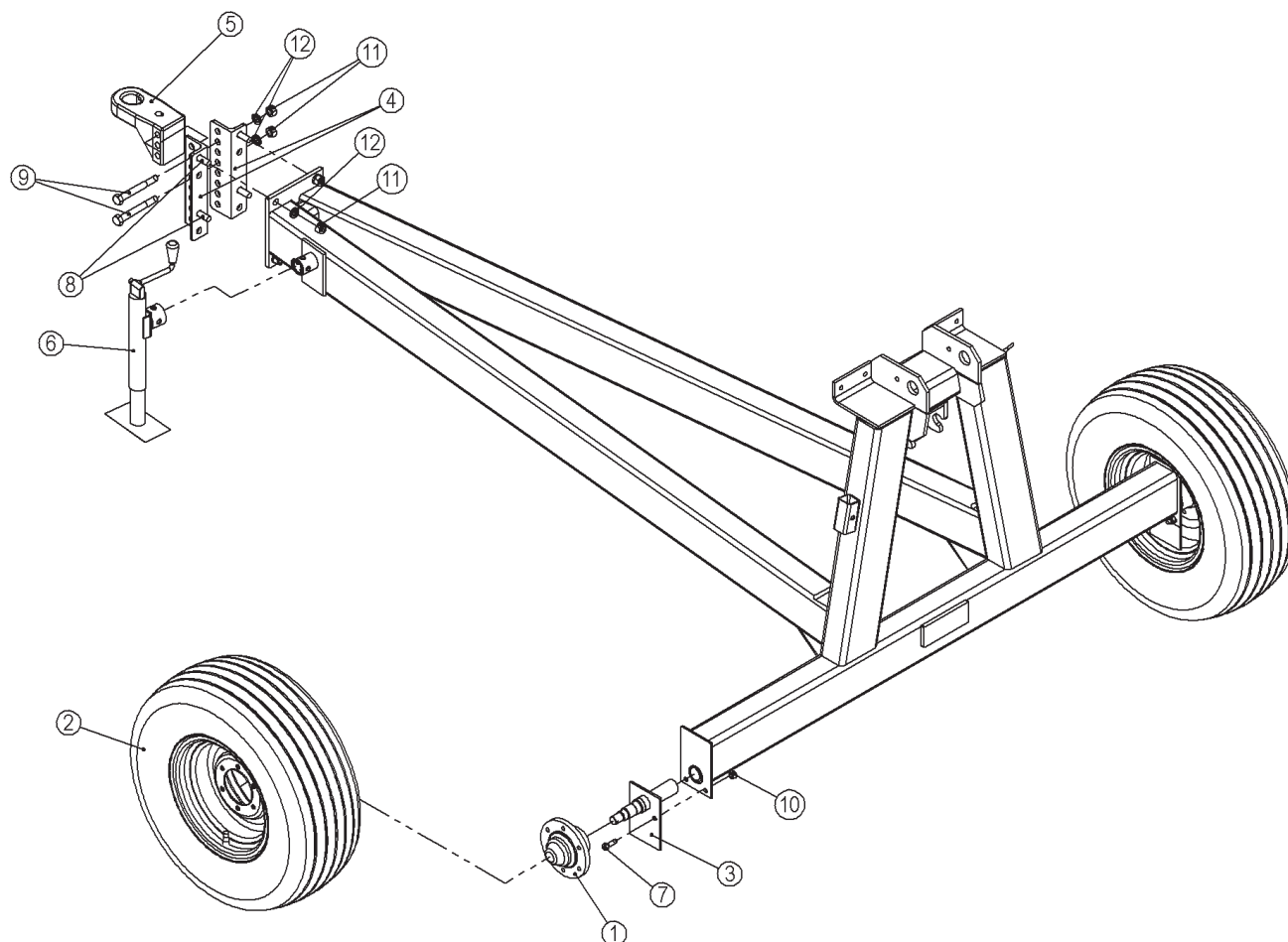
4.11A Tire, Hitch and Jack Assembly (Part No. 49945)**USE FOR MACHINES UP TO AND INCLUDING SERIAL NUMBER BP40650755**

ITEM NO.	PART NO.	DESCRIPTION	QTY.
1	45224	SUSP,HUB,H611,3600lbs	2
2	49089	WHEEL,COMPLETE,BP,OFF-WHITE	2
3	49946	WLDT,SPINDLE,BOLT_ON	2
4	E6546	ANGLE,BRIDLE,HITCH,LT	2
5	31861	HITCH,BASE,3 IN 1	1
6	33835	JACK,2000LBX10,RND MNT,TOPWIND	1
7	31016	BOLT,HEX,1/2X1-1/2,UNC,GR5,ZP	4
8	31339	BOLT,HEX,3/4X2,UNC,GR5,ZP	4
9	31042	BOLT,HEX,3/4X6,UNC,GR5,ZP	2
10	31173	NUT,NYLOCK,1/2,UNC,ZP	4
11	31167	NUT,HEX,3/4,UNC,GR5,ZP	6
12	31246	WASHER,LOCK,3/4,ZP	6



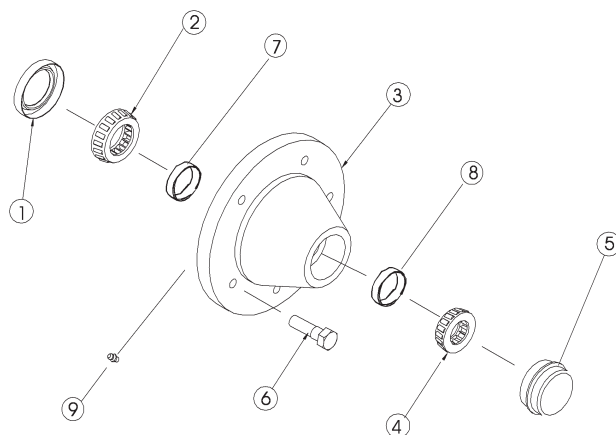
4.11B Tire, Hitch and Jack Assembly (Part No. 49945)
USE FOR MACHINES WITH SERIAL NUMBER BP40650756 AND HIGHER

ITEM NO.	PART NO.	DESCRIPTION	QTY.
1	45224	SUSP,HUB,H611,3600lbs	2
2	49895	WHEEL,COMP,11L15,6,FU,WH	2
3	49946	WLDT,SPINDLE,BOLT_ON	2
4	E6546	ANGLE,BRIDGE,HITCH,LT	2
5	31861	HITCH,BASE,3 IN 1	1
6	33835	JACK,2000LBX10,RND MNT,TOPWIND	1
7	31016	BOLT,HEX,1/2X1-1/2,UNC,GR5,ZP	4
8	31339	BOLT,HEX,3/4X2,UNC,GR5,ZP	4
9	31042	BOLT,HEX,3/4X6,UNC,GR5,ZP	2
10	31173	NUT,NYLOCK,1/2,UNC,ZP	4
11	31167	NUT,HEX,3/4,UNC,GR5,ZP	6
12	31246	WASHER,LOCK,3/4,ZP	6

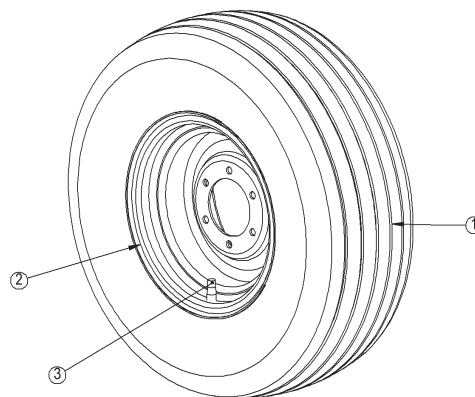


4.11.1 Hub Assembly (Part No. 45224)

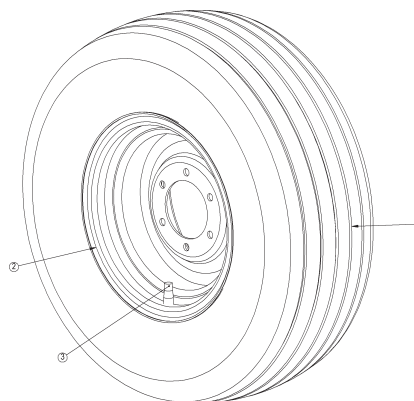
ITEM NO.	PART NO.	DESCRIPTION	QTY.
1	30346	OIL SEAL	1
2	30344	BRG, 1-1/2, 611 HUB	1
3	30373	SUSP,HUB,H611	1
4	30345	SUSP,BRG,1-1/4,611 HUB	1
5	30342	SUSP,CAP,DUST,611 HUB	1
6	32336	SUSP,BOLT,WHEEL,1/2x1-1/4x1-3/4L	6
7	91150	SUSP,BRG,RACE,LM29710	1
8	91130	SUSP,BRG,RACE,LM67010	1
9	30207	ZERK,1/4-28,GF641,STRAIGHT	1

**4.11A.2 Tire Assembly (Part No. 49089)**

ITEM NO.	PART NO.	DESCRIPTION	QTY.
1	45222	SUSP,TIRE,11LX15FI,6PLY	1
2	45223	SUSP,WHEEL,15X9LB,1.12OFF,6	1
3	91048	SUSP,STEM,VALVE,TR801HP	1

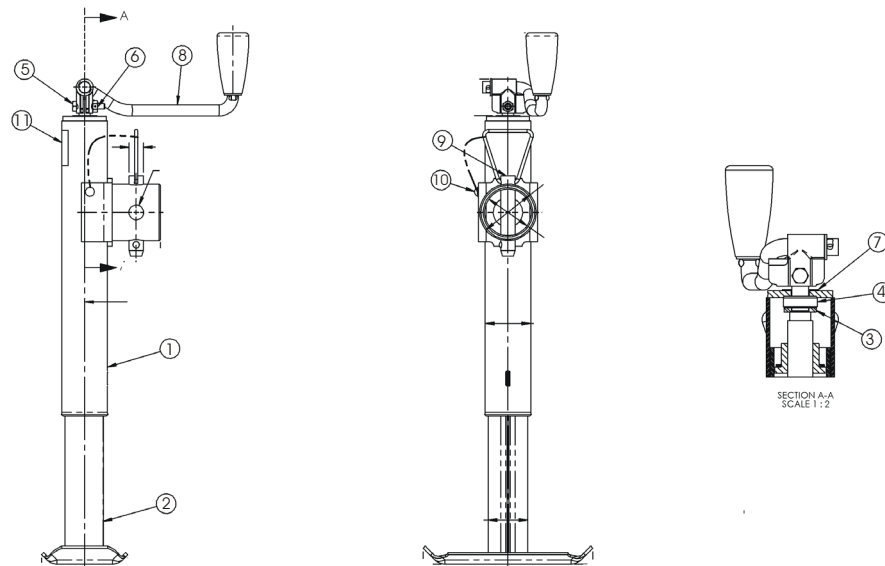
**4.11B.2 Tire Assembly (Part No. 49895)**

ITEM NO.	PART NO.	DESCRIPTION	QTY.
1	33383	SUSP,TIRE,11L15FU,8PLY	1
2	45223	SUSP,WHEEL,15X9LB,1.12OFF,6	1
3	91048	SUSP,STEM,VALVE,TR801HP	1

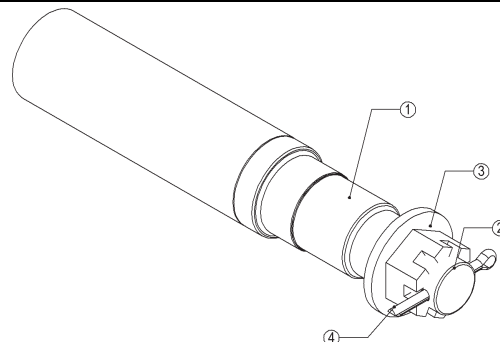


4.11.3 Jack Assembly (Part No. 33835)

ITEM NO.	PART NO.	DESCRIPTION	QTY.
1	33840	JACK, OUTER TUBE AND MOUNT	1
2	33841	JACK, ASSY INNER TUBE (TW)	1
3	33842	JACK, WASHER, SUPPORT	1
4	33843	JACK, BEARING, THRUST	1
5	31581	BOLT, HEX, 1/4X1-1/4, UNC, GR5, ZP	1
6	31174	NUT, NYLOCK, 1/4UNC, ZP	1
7	33844	JACK, WASHER, SHIM-.03 TH	1
8	33845	JACK, CRANK ASSY, 6.75TW	1
9	33846	JACK, PULL PIN & CHAIN	1
10	33847	DRIVE SCREW, NO. 12	1
11	33848	LABEL, 2000 lb CAP	1

**4.11.4 Spindle Assembly (Part No. 49571)**

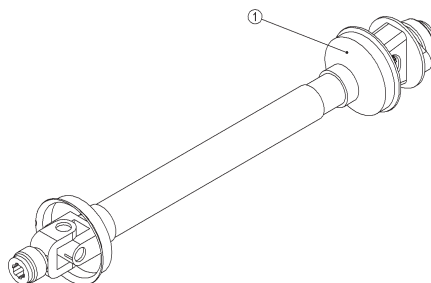
ITEM NO.	PART NO.	DESCRIPTION	QTY.
1	33143	SUSP, SPINDLE ONLY, S611, 10, 1 3/4	1
2	30372	NUT, CASTELLATED, BP6800	1
3	30371	WASHER, FLAT, 611 HUB	1
4	31183	PIN, COTTER, 3/16X2	1



5.0 Options

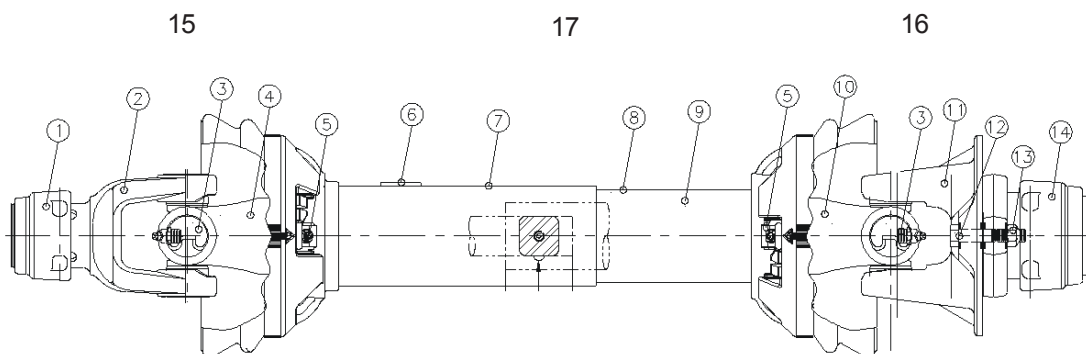
5.1 Standard PTO Option (Part No. BPO4PTO-5)

ITEM NO.	PART NO.	DESCRIPTION	QTY.
1	33836	DRV,DL,UJ,35R,34.5COMP	1



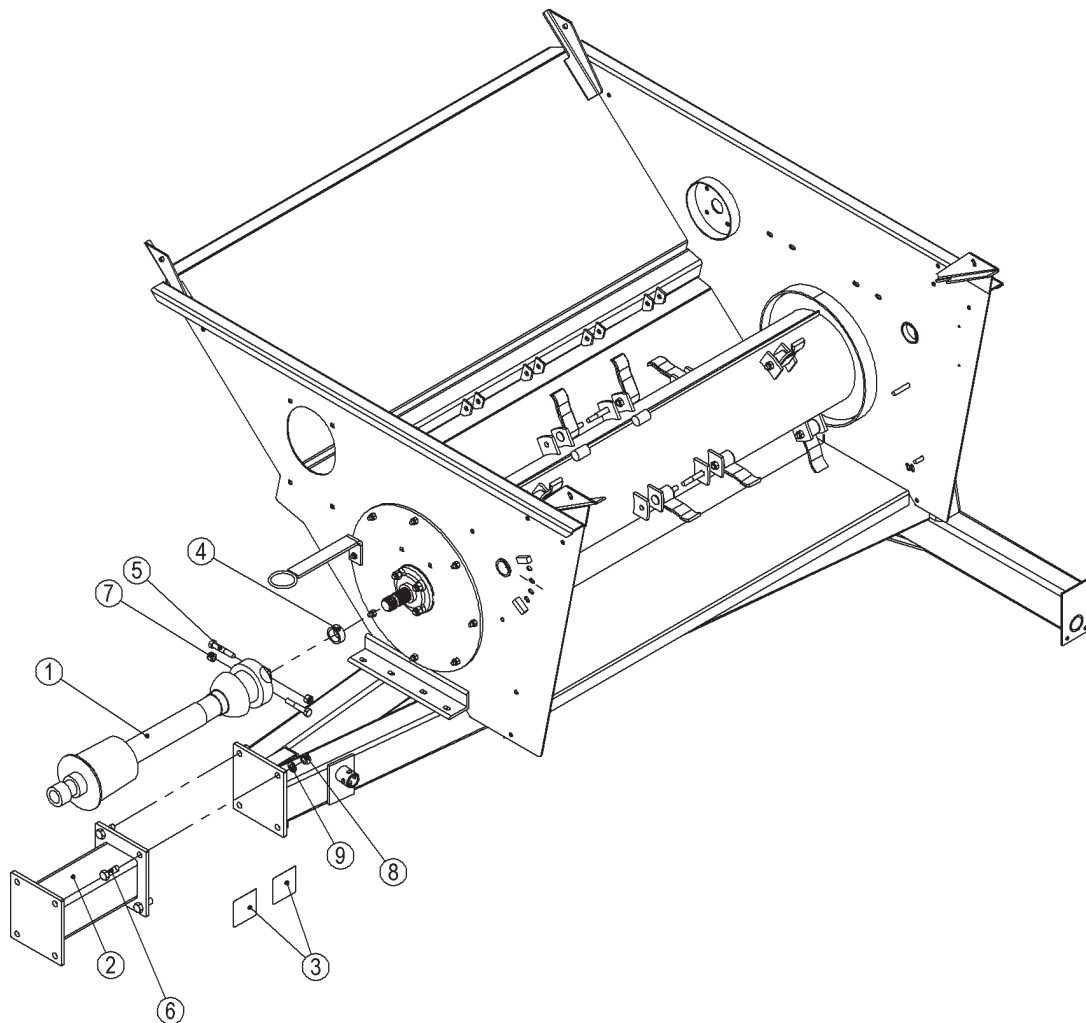
5.1.1 Standard PTO (Part No. 33836)

ITEM NO.	PART NO.	DESCRIPTION	QTY.
1	30352	KIT,REPAIR,LOCK,AUTO	1
2	33852	SAFETY SLIDE LOCK YOKE ASSY	1
3	30365	DRV,DL,U-JOINT,CROSS&BEARING,35R	2
4	33853	YOKE & SHAFT(1.19 SQ)	1
5	33811	NYLON REPAIR KIT	2
6	30359	SIGN,SAFETY	1
7	33859	OUTER GUARD	1
8	33860	INNER GUARD	1
9	30363	SAFETY SIGN	1
10	33854	YOKE,TUBE & SLIP SLEEVE	1
11	33855	BALL SHEAR ASSY	1
12	30367	3/8X2-16 GR5 BOLT	1
13	30368	3/8-16 LOCK NUT	1
14	33856	AUTO-LOK/SSL REPAIR KIT	1
15	33857	J&S HALF ASSY W GUARD	
16	33858	J&T HALF ASSY W GUARD	
17	33861	GUARD SET	



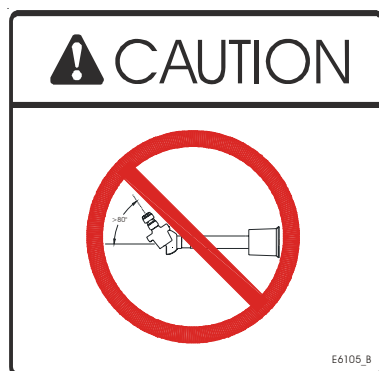
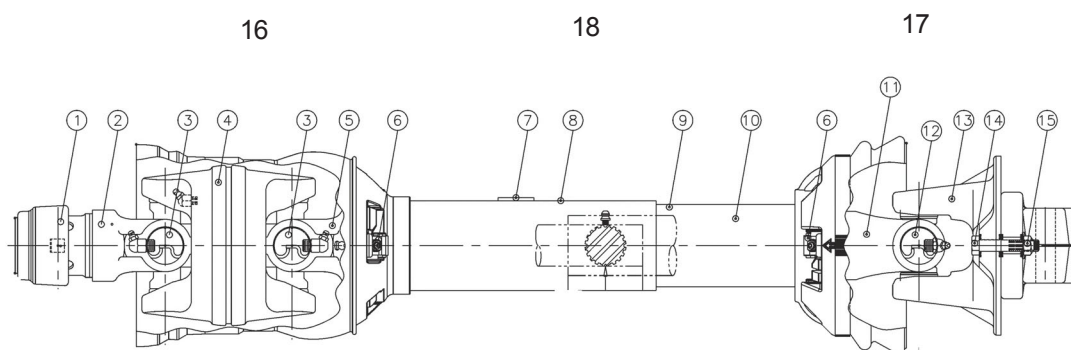
5.2 CV PTO Option (Part No. BPO4CVPTO-5 (89062))

ITEM NO.	PART NO.	DESCRIPTION	QTY.
1	45230	DRV,DL,35R,CV,CAT4,ROT	1
2	49667	WLDT,EXTENSION,HITCH	1
3	E6105	DECAL,WARNING,CV ANGLE	2
4	E8538	PIPE,SMLS,2-1/4X.240X7/8L	1
5	31056	BOLT,HEX,5/8X3-1/2,UNC,GR5,ZP	2
6	31339	BOLT,HEX,3/4X2,UNC,GR5,ZP	4
7	31178	NUT,NYLOCK,5/8,UNC,ZP	2
8	31167	NUT,HEX,3/4,UNC,GR5,ZP	4
9	31246	WASHER,LOCK,3/4,ZP	4



5.2.1 CV PTO (Part No. 45230)

ITEM NO.	PART NO.	DESCRIPTION	QTY.
1	30352	AUTO LOCK REPAIR KIT	1
2	30353	AUTO LOCK YOKE ASSEMBLY	1
3	30354	CAT4 80 DEGREE CROSS & BEARING	2
4	33806	CENTER HOUSING	1
5	30357	YOKE AND SHAFT	1
6	33811	NYLON REPAIR KIT	2
7	30359	SAFETY SIGN	1
8	N/A	OUTER GUARD	1
9	N/A	INNER GUARD	1
10	30363	SAFETY SIGN	1
11	30364	YOKE, TUBE, & SLIP SLEEVE	1
12	30365	35R CROSS AND BEARING KIT	1
13	32991	BALL SHEAR ASSEMBLY	1
14	30367	3/8 x 2-16 GR 5 BOLT	1
15	30368	3/8-16 LOCK NUT	1
16	33812	J&S HALF ASM W/GUARD SET	
17	33813	J&T HALF ASM W/GUARD SET	
18	33814	ROTATING GUARD SET	



CAUTION:

THE CV PROVIDED HAS AN 80 DEGREE TURN LIMITATION.

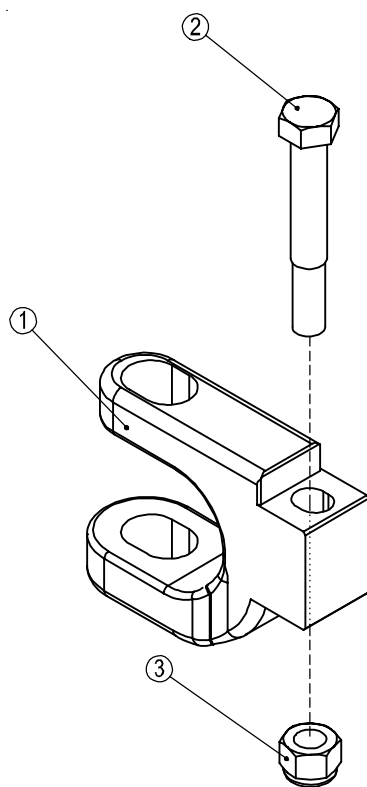
EXCEEDING 80 DEGREES WHILE THE PTO IS ROTATING OR NOT ROTATING WILL CAUSE SEVERE DAMAGE TO THE COMPONENTS.

TAKE CARE WHILE TURNING WITH THE TRACTOR TO NOT TURN TOO SHARPLY.

This page intentionally left blank.

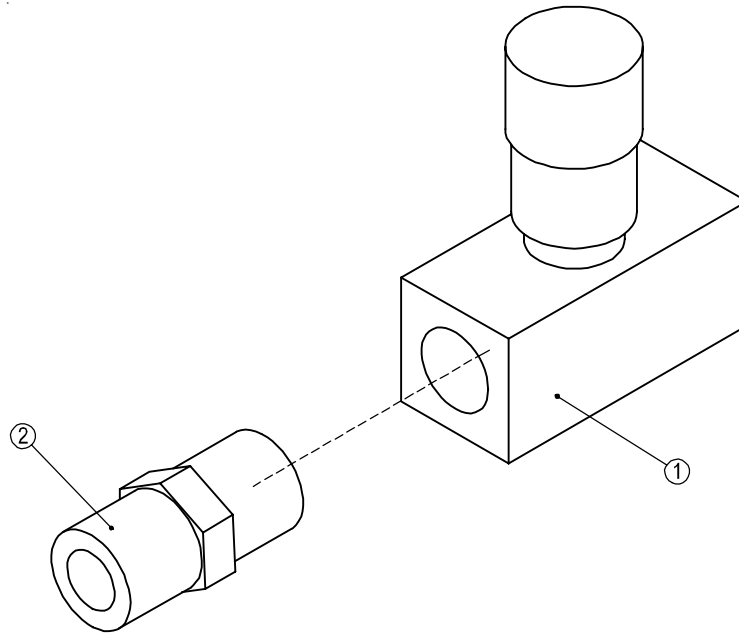
5.4 Hitch Clevis Option (Part No. BPOHC-4 (89004))

ITEM NO.	PART NO.	DESCRIPTION	QTY.
1	31862	CLEVIS,HITCH,3 IN 1	1
2	31486	BOLT,HEX,3/4X5,UNC,GR5,ZP	1
3	31175	NUT,NYLOCK,3/4,UNC,ZP	1



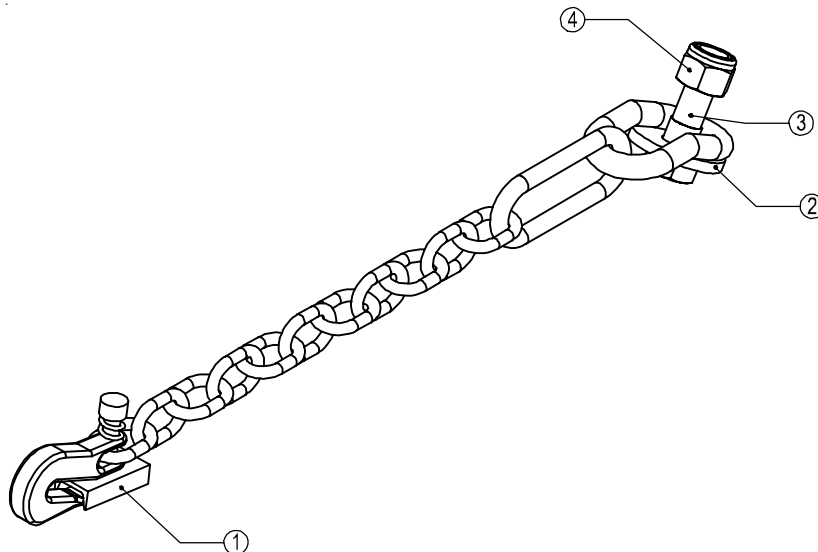
5.5 Flow Control Option (Part No. BPOFC-4 (89005))

ITEM NO.	PART NO.	DESCRIPTION	QTY.
1	32975	HYD, VALVE, CONTROL, FLOW, 8FP	1
2	32082	HYD, FIT, ADAPTOR, 8MP-8MP	1

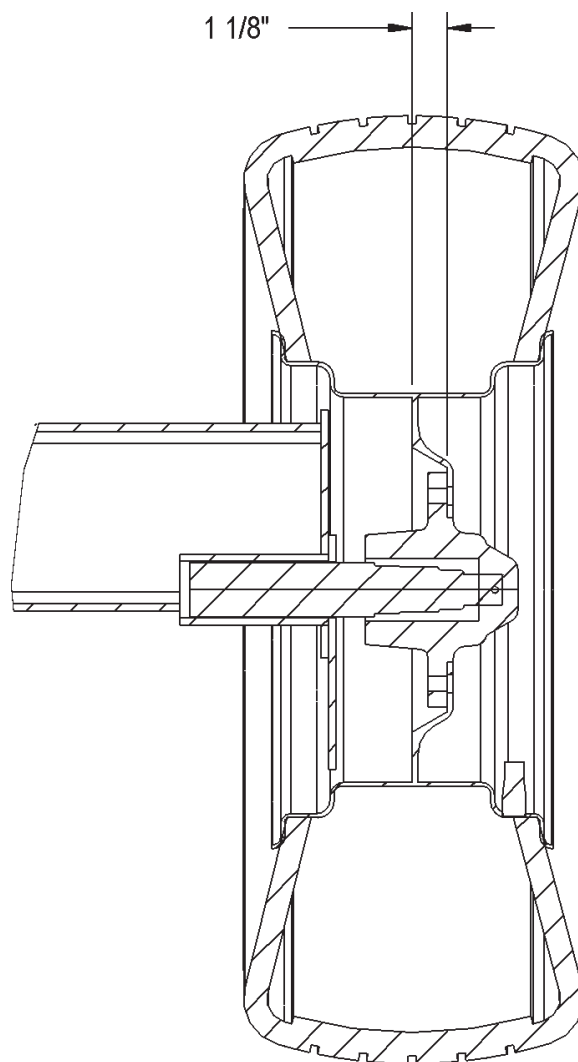


5.6 Safety Chain Option (Part No. BPOSC-4 (89006))

ITEM NO.	PART NO.	DESCRIPTION	QTY.
1	31590	CHAIN, SAFETY, ASAE, 10100LB, 5'4"	1
2	E6150	PLT, C, 1/4x13/16x2-1/4	1
3	31315	BOLT, HEX, 3/4X2-1/2, GR8, ZP	1
4	31175	NUT, NYLOCK, 3/4, UNC, ZP	1



STANDARD TIRE MOUNTING
(6 Bolt Wheel Assembly)



NOTE: INSTALL STANDARD TIRE/RIM COMBINATION AS ORIENTED ABOVE. FAILURE TO DO SO MAY RESULT IN SPINDLE AND/OR HUB BREAKAGE AND VOID WARRANTY.

This page intentionally left blank.

6.0 Parts Index

Part#	Description	Page	Part#	Description	Page
30204	HYD,FIT,ADAPTER,10MB-8MJ	35	31351	WASHER,FLAT,3/8,ZP	35
30207	ZERK,1/4-28,GF641,STRAIGHT	36	31351	WASHER,FLAT,3/8,ZP	40
30207	ZERK,1/4-28,GF641,STRAIGHT	38	31486	BOLT,HEX,3/4X5,UNC,GR5,ZP	50
30207	ZERK,1/4-28,GF641,STRAIGHT	44	31581	BOLT,HEX,1/4X1-1/4,UNC,GR5,ZP	45
30208	PLT,SERIAL#	16	31590	CHAIN,SAFETY,ASAE,10100LB,5'4"	51
30209	HYD,FIT,PIONEER,MALE,8FP	35	31599	BOLT,HEX,1/2X6-1/2,UNC,GR5,ZP	36
30210	HYD,CLAMP,HOSE,1/2	35	31599	BOLT,HEX,1/2X6-1/2,UNC,GR5,ZP	38
30211	HYD,FIT,ELBOW,8MB-8MJ90	35	31668	WASHER,SPRING,3/4,342	32
30271	DECAL,DANGER,ROTATING DRIVE	16	31810	GRIP,HANDLE,1-1/4IDX4-1/2	40
30285	DECAL,DANGER,TO PREVENT	16	31813	PIN,QUICK RELEASE,1/2X3,ZP	36
30288	RIVET,ST,1/8X.390,.250HEAD	16	31813	PIN,QUICK RELEASE,1/2X3,ZP	38
30294	SCREW,TEK,1/4X1	27	31861	HITCH,BASE,3 IN 1	42
30342	SUSP,CAP,DUST,611 HUB	44	31861	HITCH,BASE,3 IN 1	43
30344	BRG, 1-1/2, 611 HUB	44	31862	CLEVIS,HITCH,3 IN 1	50
30345	SUSP,BRG,1-1/4,611 HUB	44	31894	RETAINER,BOLT,1/2	29
30346	OIL SEAL	44	31894	RETAINER,BOLT,1/2	30
30352	KIT,REPAIR,LOCK,AUTO	46	31945	BOLT,U,SQ,1/2-13X4X7-1/2	24
30352	AUTO LOCK REPAIR KIT	48	32082	HYD,FIT,ADAPTOR,8MP-8MP	51
30353	AUTO LOCK YOKE ASSEMBLY	48	32336	SUSP,BOLT,WHEEL,1/2x1-1/4x1-3/4L	44
30354	CAT4 80 DEGREE CROSS & BEARING	48	32639	BEARING,THRUST,FRONT	28
30357	YOKE AND SHAFT	48	32647	SEAL KIT,ROLLER STATOR	28
30359	SIGN,SAFETY	46	32649	BEARING,HOUSING,REAR,1/2	28
30359	SAFETY SIGN	48	32651	BEARING,THRUST,REAR	28
30363	SAFETY SIGN	46	32653	SHAFT KIT	28
30363	SAFETY SIGN	48	32720	BEARING,HOUSING,FRONT	28
30364	YOKE,TUBE, & SLIP SLEEVE	48	32722	DRIVE LINK KIT	28
30365	DRV,DL,U-JOINT,CROSS&BEARING,35R	46	32725	SHAFT KIT	28
30365	35R CROSS AND BEARING KIT	48	32726	BALANCE PLATE & BALLS	28
30367	3/8X2-16 GR5 BOLT	46	32727	END COVER	28
30367	3/8 x 2-16 GR 5 BOLT	48	32734	WASHER,FLAT,3-1/8ODX1/2	26
30368	3/8-16 LOCK NUT	46	32734	WASHER,FLAT,3-1/8ODX1/2	27
30368	3/8-16 LOCK NUT	48	32975	HYD,VALVE,CONTROL,FLOW,8FP	51
30371	WASHER,FLAT,611 HUB	45	32981	DECAL,PIMA	16
30372	NUT,CASTELLATED,BP6800	45	32991	BALL SHEAR ASSEMBLY	48
30373	SUSP,HUB,H611	44	32998	SPRING,1.5X2.50X0.135	34
30577	DECAL,RED REFL,2X9	16	33143	SUSP,SPINDLEONLY,S611,10,1 3/4	45
30578	DECAL,AMBER REFL,2X9	16	33377	HYD,MOTOR,22.8,3000PSI	26
30611	NUT,NYLOCK,JAM,1/2,UNC,ZP	30	33377	HYD,MOTOR,22.8,3000PSI	27
31008	BOLT,CARR,1/2X1-1/2,UNC,GR5,ZP	29	33383	SUSP,TIRE,11L15FU,8PLY	44
31008	BOLT,CARR,1/2X1-1/2,UNC,GR5,ZP	30	33652	ROTOR KIT	28
31009	BOLT,CARR,1/2X2,UNC,GR5,ZP	32	33653	HOUSING KIT	28
31012	BOLT,CARR,1/4X1,UNC,GR5,ZP	26	33654	BOLT KIT	28
31016	BOLT,HEX,1/2X1-1/2,UNC,GR5,ZP	24	33655	BEARING,CARTRIDGE,FLANGE,1-3/4"	25
31016	BOLT,HEX,1/2X1-1/2,UNC,GR5,ZP	26	33655	BEARING,CARTRIDGE,FLANGE,1-3/4"	27
31016	BOLT,HEX,1/2X1-1/2,UNC,GR5,ZP	27	33655	BEARING,CARTRIDGE,FLANGE,1-3/4"	30
31016	BOLT,HEX,1/2X1-1/2,UNC,GR5,ZP	40	33656	BEARING,INSRT,1-3/4 B,85mmOD	26
31016	BOLT,HEX,1/2X1-1/2,UNC,GR5,ZP	42	33656	BEARING,INSRT,1-3/4 B,85mmOD	27
31016	BOLT,HEX,1/2X1-1/2,UNC,GR5,ZP	43	33658	DRV,SPRKT,#80,24,1-3/4-20SPL	26
31017	BOLT,HEX,1/2X1-3/4,UNC,GR5,ZP	25	33658	DRV,SPRKT,#80,24,1-3/4-20SPL	27
31017	BOLT,HEX,1/2X1-3/4,UNC,GR5,ZP	27	33659	CHAIN,CONNECTOR_LINK,#80	26
31017	BOLT,HEX,1/2X1-3/4,UNC,GR5,ZP	36	33659	CHAIN,CONNECTOR_LINK,#80	27
31017	BOLT,HEX,1/2X1-3/4,UNC,GR5,ZP	38	33679	SPRING,EXT,31/64ODX5-1/4X.063	26
31020	BOLT,HEX,1/2X2-3/4,UNC,GR5,ZP	36	33696	BOLT,CARR,5/18X3-3/4,UNF,GR8,BLACK	31
31021	BOLT,HEX,1/2X3,UNC,GR5,ZP	32	33800	HYD,CYL,4.0X16,CLVXTUBE,8FBIL	36
31021	BOLT,HEX,1/2X3,UNC,GR5,ZP	34	33800	HYD,CYL,4.0X16,CLVXTUBE,8FBIL	38
31023	BOLT,HEX,1/2X3-1/2,UNC,GR5,ZP	33	33806	CENTER HOUSING	48
31023	BOLT,HEX,1/2X3-1/2,UNC,GR5,ZP	40	33811	NYLON REPAIR KIT	46
31028	BOLT,HEX,1/2X5,UNC,GR5,ZP	40	33811	NYLON REPAIR KIT	48
			33812	J&S HALF ASM W/GUARD SET	48

Part#	Description	Page	Part#	Description	Page
33813	J&T HALF ASM W/GUARD SET	48	49899	WLDT,PIN,FORK,1-1/4DX4-7/16U	38
33814	ROTATING GUARD SET	48	49905	WLDT,FRAME,BP	24
33835	JACK,2000LBX10,RND MNT,TOPWIND	42	49906	FRAME,LIFT	36
33835	JACK,2000LBX10,RND MNT,TOPWIND	43	49907	WLDT,DRUM,FLAIL,6',1 3/4 EXT SPLINE	31
33835	JACK,2000LBX10,RND MNT,TOPWIND	45	49908	ASSY,FLAIL DRUM	30
33836	DRV,DL,UJ,35R,34.5COMP	46	49910	WLDT,BALE,_SHIELD	33
33839	TARP,50X68-3/4,3_PKT,DISCHARGE	40	49912	WLDT,BALE,_SHIELD,DISCHARGE	33
33840	JACK,OUTER TUBE AND MOUNT	45	49913	WLDT,FEED_ROLL	25
33841	JACK,ASSY INNER TUBE (TW)	45	49916	WLDT,MOUNT,BRG_TWINE_MOTOR	26
33842	JACK,WASHER,SUPPORT	45	49917	ASSY,DRIVE,FEEDROLLER	25
33843	JACK,BEARING,THRUST	45	49918	WLDT,PLT,INSTALL,FLAIL_DRUM	30
33844	JACK,WASHER,SHIM-.03 TH	45	49919	PIN,ANTIROTATE,1-3/4DIA	36
33845	JACK,CRANK ASSY,6.75TW	45	49919	PIN,ANTIROTATE,1-3/4DIA	38
33846	JACK,PULL PIN & CHAIN	45	49921	WLDT,BAR,ADJ,GUARD,FLAIL	32
33847	DRIVE SCREW,NO.12	45	49924	WLDT,BOTTOM DIS DOOR	34
33848	LABEL,2000 lb CAP	45	49925	WLDT,FRAME,DOOR,CANVAS	40
33852	SAFETY SLIDE LOCK YOKE ASSY	46	49926	WLDT,FRAME,INNER_DOOR	40
33853	YOKE & SHAFT(1.19 SQ)	46	49928	WLDT,HANDLE,FGR	32
33854	YOKE,TUBE & SLIP SLEEVE	46	49943	WLDT,PANEL,INNER	24
33855	BALL SHEAR ASSY	46	49946	WLDT,SPINDLE,BOLT_ON	42
33856	AUTO-LOK/SSL REPAIR KIT	46	49946	WLDT,SPINDLE,BOLT_ON	43
33857	J&S HALF ASSY W GUARD	46	49947	WLDT,GUARD_ROD	32
33858	J&T HALF ASSY W GUARD	46	49948	WLDT,FORK,RIGHT	36
33859	OUTER GUARD	46	49949	WLDT,FORK,LEFT	36
33860	INNER GUARD	46	70632	TETHER,CABLE,12"	40
33861	GUARD SET	46	75437	DRV,SPROCKET,COUPLING,SPLINE	26
33863	CHAIN,LAP_LINK,3/16,ZP	40	75437	DRV,SPROCKET,COUPLING,SPLINE	27
33866	HYD,CYL,SEALKIT,4x2	36	89062	BP,OPTION,4065,CV_PTO	47
33867	HYD,CYL,TUBE,4X16,8FB,IL	36	91048	SUSP,STEM,VALVE,TR801HP	44
33868	HYD,CYL,NUT	36	91048	SUSP,STEM,VALVE,TR801HP	44
33869	HYD,CYL,PISTON,4	36	91130	SUSP,BRG,RACE,LM67010	44
33870	HYD,CYL,ROD,2X16,WLDCLV,1.5P	36	91150	SUSP,BRG,RACE,LM29710	44
33871	HYD,CYL,CAP,ROD,4X2	36	92028	SIGN,SLOWMOVING,S276.5	16
33873	PIN,HITCH,2X3.625,DBL_LOOP,ZP	40	92094	DRV, BRG, FLANGE, 1-3/8"	25
33889	WASHER,FLAT,1/2X2OD,ZP	34	92094	DRV, BRG, FLANGE, 1-3/8"	27
33893	HYD,HOSE,1/2X102,8MP-8FJX,2W	35	92127	COVER,VINYL,3/8X1-1/2	32
33894	HYD,HOSE,3/8X234,8MP-8FJX,2W	35	92573	DECAL,WARNING,DISCHARGE	16
45185	PIN, CYL, TOP	38	92579	DECAL,HIGHLINE,4X30	16
45222	SUSP,TIRE,11LX15F1,6PLY	44	33601(11.13)	DECAL,PSTRP,11.13,YLW,1	16
45223	SUSP,WHEEL,15X9LB,1.12OFF,6	44	33834(11.13)	DECAL,PSTRP,11.13,BLK,6	16
45223	SUSP,WHEEL,15X9LB,1.12OFF,6	44	33862(11.1)	CHAIN,GR 30,3/16E,1.06X.45ID,ZP	40
45224	SUSP,HUB,H611,3600lbs	42	E2083	PIPE,DOM,1x.180x2-1/8L,HARD	31
45224	SUSP,HUB,H611,3600lbs	43	E3265	DECAL,GREASEZERK,8H	16
45230	DRV,DL,35R,CV,CAT4,ROT	47	E3266	DECAL,GREASEZERK,16H	16
49089	WHEEL,COMPLETE,BP,OFF-WHITE	42	E3714	FLAIL	31
49379	PIN,FLOAT,FORK	36	E3834	DECAL,DANGER,DO NOT STAND	16
49516	WLDT,PIN,ADJUSTMENT,FGR	32	E5868	DECAL,LOCK,CYLINDER	16
49658	WLDT,BAR,WEIGHT	40	E6087	BUSHING,PIN,FORK,HOLE	36
49659	WLDT,HOLDER,HOSE	30	E6105	DECAL,WARNING,CV ANGLE	47
49665	PIN,ANTIROTATE,1-1/2X5-9/16	36	E6150	PLT,C,1/4x13/16x2-1/4	51
49665	PIN,ANTIROTATE,1-1/2X5-9/16	38	E6250	PLT,ANTIROTATION,1-1/2D	36
49667	WLDT,EXTENSION,HITCH	47	E6250	PLT,ANTIROTATION,1-1/2D	38
49668	WLDT,PIN,CYL,1X4-5/16U	36	E6405	PIPE,SMLS,2-1/4x.240x1/4L	26
49669	WLDT,TUB,BP4065	24	E6546	ANGLE,BRIDLE,HITCH,LT	42
49673	WLDT,FEED_ROLL	27	E6546	ANGLE,BRIDLE,HITCH,LT	43
49895	WHEEL,COMP,11L15,6,FU,WH	43	E7386	GUARD,FEEDROLLER_CHAIN	26
49896	WLDT,FRAME,LIFT	38	E7542	CHAIN,ROLLER,#80,15 LINKS	26
49897	WLDT,FORK,LEFT	38	E7552	DECAL,WARNING,OWNERS_MANUAL	16
49898	WLDT,FORK,RIGHT	38	E7553	DECAL,WARNING,STOP_ENGINE/SERVICE	16

Part#	Description	Page	Part#	Description	Page
E8054	BLOCK,GUIDE,CHAIN	26			
E8257	TUBE,SCREEN,BOTTOM	33			
E8358	TUBE,SCREEN,TOP	33			
E8378	PIPE,ATTACH,CANVAS	40			
E8511	GUARD,DRIVELINE	29			
E8517	DECAL,AGGRESSION,GUARD ROD	16			
E8521	LOCK,CYL,CHANNEL	36			
E8521	LOCK,CYL,CHANNEL	38			
E8538	PIPE,SMLS,2-1/4X.240X7/8L	47			
E8540	ANGLE,TURN,BALE	27			
E8585	CHAIN,ROLLER,#80,22 LINKS	27			
E8587	COVER,DRIVE,FROLL	27			
E8588	PLATE,GUARD,FINGER	27			
E8597	DECAL,BALEPRO_4065,7.2X29.6	16			

7.0 Specifications

Horse Power Requirements (min):	55 HP
Capacity:	2 bales - 6' long x 6' diameter - max. 2000 lbs (907kg) each
Flail Drum Length:	72" (1.83m)
Flail Drum Diameter:	26 3/4" swept diameter (67.9 cm) Balanced
Flails:	12 flails - 7/16" x 5 9/16" Tempered Spring Steel
Tires:	2 - 11L X 15 - 8 ply Farm Utility (inflate to 36 psi)
Height - Forks Up:	121" (3.07m)
Height - Top of Deflectors:	90" (2.29m)
Width - Tires:	93-3/4" (2.38m)
Width - Overall:	101" (2.56m)
Length - Forks Down:	187-5/8" (4.77m)
Length - Forks Up:	161" (4.09m)
Weight - Total:	2500 lbs (1134 kg)
Hitch Weight (Empty):	851 lbs (386 kg)
Hitch Weight (One bale in chamber):	1335 lbs (605.5 kg)
PTO Requirements:	1000 RPM PTO 1-3/8" - 21 spline shaft
Hydraulic Requirements	1500 psi @ 10 gpm - 2000 lb bales
Cylinder:	4" x 16", 2" Rod Diameter
Hydraulic Motor:	22.8 cu in @ 3500 psi maximum intermittent
Feed Roller Drive:	#80 chain, 2:1 reduction

Dealer Information

Dealer: _____

Address: _____

City: _____

Province / State: _____

Postal Code / Zip Code: _____

Phone: _____



Identification Numbers

Model Number: _____

Serial Number: _____

Dealer Checklist☐ Packaged

SERIAL NO.: _____

☐ RTUOptions: ☐ BPO4065PTO-5 ☐ BPO4065CVPTO-5 ☐ BPOHC-5 ☐ BPOSC-5

IQ	N/A	✓	Check List Item
			Flail rod adjustment handle moves freely and will hit all 4 adjustment holes.
			Bottom deflector door moves freely and will hit all 2 adjustment holes.
			Ensure all grease points are lubricated and grease point decals installed
			Ensure lift assembly is against frame when cylinders are retracted.
			Safety decals & reflective stripes installed per specifications and drawings.
			Check tire pressure as specified on tire.
			Full library of manuals (operators, and parts) shipped with machine (When applicable).
			Visually check for 1/2" Flail to Tub clearance - front and back of flail drum

IQ	N/A	✓	PACKAGING LIST
			- Fork, left and Fork, right
			- PTO
			- Package screen tubes with hardware

IQ	N/A	✓	OPERATIONAL CHECK
			- flail drum (not binding on twine guards)
			- flails not hitting tub or rods - test 1 in 10 using tractor
			Feed Rollers turn in both directions
			Ensure free movement of BP forks (not binding).
			Ensure cylinder transport lock fits with forks in transport position.
			Hydraulic motor to be operated and checked for leaks and free movement.
			Cycle cylinder a minimum of 3 times, check for leaks and clearance problems.
			Dump - hits bottom stops with cylinders fully retracted

