

BALE MOVER 1400 (A) Owner's Manual

RELEASED



Before operating the Bale Mover 1400, be sure to review *all* the instructions and familiarize yourself with its features.

This page intentionally left blank.

TABLE OF CONTENTS

Warranty	5
President's Message	6
Safety Precautions	7
 1.0 Operating Instructions	 8
1.1 Pre-Start Instructions	8
1.2 Transporting Instructions	8
1.3 Bale Size Adjustment	8
1.4 Field Instructions	9
 2.0 Maintenance Instructions	 10
2.1 Grease Locations	10
2.2 Tire Removal Procedure	12
 3.0 Parts Information	 14
3.1 Tandem Axle Assembly	14
3.1.1 Hub Assembly (Part No. 30102)	15
3.1.2 Wheel Assembly (Part No. 31795)	15
3.2 Subframe Assembly	16
3.3 Hitch Assembly	18
3.4 Rail and Crossmember Assembly	20
3.5 Subframe Supports	22
3.6 Fork Assembly	24
3.7 Chain Assembly	26
3.8 Motor Hydraulics	28
3.8.1 Orbit Motor Assembly (Part No. 92184)	30
3.9 Cylinder Hydraulics (Part No. 40174)	32
3.9.1 3 1/2 x 16 Cylinder (Part No. 90103)	34
3.9.2 3 1/2 x 13 Cylinder (Part No. 90120)	35
3.10 Electrical Schematic	36
3.10.1 Control Box (Part No. 92125) and Wiring Harness (Part No. 92077)	37
3.10.2 Control Box Schematic	38
3.11 Lighting Assembly (Part No. 40169)	40
3.12 Decal Assembly (Part No. 45258)	42
3.13 Short Fork Kit Option (Part No. 40178)	44
 4.0 Parts Index	 45
 5.0 Specifications	 51
 Dealer Information	 52
Identification Numbers	52
Dealer Checklist	53

This page intentionally left blank.

Warranty

Highline New Agricultural Equipment Limited Warranty *Effective July 1, 2000 Two (2) Year / 24 Months* *1st Year Parts and Labour – 2nd Year Parts Only*

Highline Mfg. Inc (hereinafter "Highline") warrants each new Agricultural product of Highline's manufacture to be free from defects in material and workmanship, under normal use and service for two (2) full years after initial purchase/retail sale. Highline will warrant its product for one (1) year parts and labour, if performed by a qualified Dealer and on the second year parts only. This Limited Warranty shall apply only to complete machines of Highline's manufacture, parts are covered by a separate Limited Warranty.

EQUIPMENT AND ACCESSORIES NOT OF HIGHLINE'S MANUFACTURE ARE WARRANTED ONLY TO THE EXTENT OF THE ORIGINAL MANUFACTURER'S WARRANTY AND SUBJECT TO THEIR ALLOWANCE TO HIGHLINE ONLY IF FOUND DEFECTIVE BY SUCH MANUFACTURER.

During the Limited Warranty period specified above, any defect in material or workmanship in any warranted item of Highline Agricultural Equipment not excluded below shall be repaired or replaced at Highline's option without charge by any authorized independent Highline Dealer. An authorized Dealer must make the warranty repair or replacement. Labour in accordance with Highline's labour reimbursement policy. Highline reserves the right to supply remanufactured replacement parts as it deems appropriate.

RETAIL PURCHASER RESPONSIBILITY: This Limited Warranty requires proper maintenance and periodic inspections of the Agricultural Equipment as indicated in the Operator's Manual furnished with each new Agricultural Equipment. The cost of routine or required maintenance and services is the responsibility of the retail purchaser. The retail purchaser is required to keep documented evidence that these services were performed. This Highline New Agricultural Equipment Limited Warranty may be subject to cancellation if the above requirements are not performed

EXCLUSIONS AND LIMITATIONS

The warranties contained herein shall **NOT APPLY TO:**

- (1) Any defect which was caused (in Highline's sole judgement) by other than normal use and service of the Agricultural Equipment, or by any of the following: (i) accident (ii) misuse or negligence (iii) overloading (iv) lack of reasonable and proper maintenance (v) improper repair or installation (vi) unsuitable storage (vii) non-Highline approved alteration or modification (viii) natural calamities (ix) vandalism (x) parts or accessories installed on Agricultural Equipment which were not manufactured or installed by Highline authorized Dealers (xi) the elements (xii) collision or other accident.
- (2) Any Agricultural Equipment whose identification numbers or marks have been altered or removed.
- (3) Any Agricultural Equipment which any of the required or recommended periodic inspection or services have been performed using parts not manufactured or supplied by Highline or meeting Highline Specifications including, but without limitation, lubricants (oil, grease), belt lacings, and hydraulic fluids.
- (4) Equipment used for rental, custom work, industrial and construction or if equipment is used for any other purpose than the intended agricultural application.
- (5) Any Agricultural Equipment used in demonstrations not performed by a Highline Dealer. Warranty will be at the discretion of Highline for all other demonstration warranty.
- (6) **New Agricultural Equipment delivered to the retail purchaser in which the warranty registration has not been completed and returned to Highline within ten (10) days from the date of purchase**
- (7) Any defect that was caused (in Highline's sole judgement) by operation of the Agricultural Equipment not abiding by standard operating procedures outlined in the Operator's Manual.
- (8) Tire Limited Warranties and support are the responsibility of the respective product's manufacturer.
- (9) Transportation costs, if any, of transporting to the Highline Dealer.
- (10) In no event shall Highline's liability exceed the purchase price of the product.
- (11) Highline shall not be liable to any person under any circumstances for any incidental or consequential damages (including but not limited to, loss of profits, out of service time and damage to equipment which this equipment may be attached) occurring for any reason at any time.
- (12) Diagnostic and overtime labour premiums are not covered under this Limited Warranty Policy.
- (13) Depreciation damage caused by normal wear, lack of reasonable and proper maintenance, failure to follow operating instructions, misuse, and/or lack of proper protection during storage.
- (14) Accessory systems and electronics not of Highline's manufacture are warranted only to the extent of such manufacturer's respective Limited Warranty if any.
- (15) Wear items which are listed by product group below:

COMMON WEAR ITEMS: roller chain, sprockets, clutches, shear bolts, clutch components, chains, gearbox housings bolts/torqued parts, flails, feed roller belting, coupler chain, DRV couplers, bogie wheels, apron tines and hoses.

PARTS WARRANTY

Parts replaced in the warranty period will receive the balance of the two year New Agricultural Equipment Limited Warranty. Replacement parts after the original machine warranty are warranted to be free from defects of material for ninety (90) days or the part will be repaired or replaced, without labour coverage for removal and reinstallation.

EXCLUSION OF WARRANTIES. UNLESS OTHERWISE REQUIRED BY LAW, AND EXCEPT FOR THE WARRANTIES EXPRESSLY AND SPECIFICALLY MADE HEREIN, HIGHLINE MAKES NO OTHER WARRANTIES, AND ANY POSSIBLE LIABILITY OF HIGHLINE HEREIN UNDER IS IN LIEU OF ALL OTHER WARRANTIES, EXPRESS, IMPLIED, OR STATUTORY, INCLUDING, BUT NOT LIMITED TO, ANY WARRANTIES OF MERCHANT ABILITY OR FITNESS FOR A PARTICULAR PURPOSE. HIGHLINE RESERVES THE RIGHT TO MODIFY, ALTER AND IMPROVE ANY PRODUCT WITHOUT INCURRING ANY OBLIGATION TO REPLACE ANY PRODUCT PREVIOUSLY SOLD WITH SUCH MODIFICATION. NO PERSON IS AUTHORIZED TO GIVE ANY OTHER WARRANTY, OR TO ASSUME ANY ADDITIONAL OBLIGATION ON HIGHLINE'S BEHALF.

President's Message

The Bale Mover 1400, a proven name in the bale handling field, is made by Highline Mfg. Inc. The Bale Mover 1400 was designed to work in the most difficult of bale handling situations. A little time and effort will ensure the performance and durability of your Bale Mover.

This manual has been prepared to provide the information necessary for the safe and efficient operation of your Bale Mover. In it, you will find safety procedures, maintenance routines and detailed parts diagrams.

In order to maintain our high standards, changes or improvements are made from time to time. Highline Mfg. Inc. reserves the right to make those changes and add improvements when practical to do so without incurring any obligation to make such changes on machines previously sold.

Should the need arise, this manual will assist you in acquiring replacement parts. If your dealer does not have the parts you need in stock, they will be happy to order them for you. Feel free to contact Highline Mfg. Inc. or your local dealer if you need information that is not included in this manual.

Highline Mfg. Inc. thanks and congratulates you for selecting the Bale Mover 1400 as the machine for your bale handling needs.

Raymond J. Bussière, President
Highline Mfg. Inc.

P.O. Box 307, Vonda, Saskatchewan, S0K 4N0

Phone 1-800-665-2010 Fax (306) 258-2010

Internet Address: <http://www.highline@highlinemfg.com>

Safety Precautions

WORK SAFELY – FOLLOW THESE INSTRUCTIONS

Failure to follow these safety instructions could result in serious injury or death.

CAREFUL OPERATION IS THE BEST INSURANCE AGAINST AN ACCIDENT!

- Always disengage the PTO and hydraulic motors before dismounting tractor for any reason. Always ensure PTO is disengaged before starting tractor.
- Keep yourself and others clear of any rotating or moving parts to prevent injury.
- Never allow anyone to stand near the Bale Mover while loading or unloading bales.
- Never attempt to manually remove bales from rails while hydraulic motors are engaged. Disconnect hydraulic motors before cleaning the Bale Mover.
- Remove transport locks before lowering forks. To remove transport locks, raise forks to slacken the transport chain and then remove the transport pin. **DO NOT** lower the forks when transport locks are in position otherwise **SEVERE DAMAGE WILL OCCUR!**
- Relieve pressure in hydraulic lines before disconnecting lines or performing maintenance on the hydraulic system.

1.0 Operating Instructions

1.1 Pre-Start Instructions

Transport chains need to be removed before operation of the forks. To remove transport chains, raise forks slightly and remove transport pins. DO NOT lower forks when transport chains are in position otherwise severe damage WILL occur.

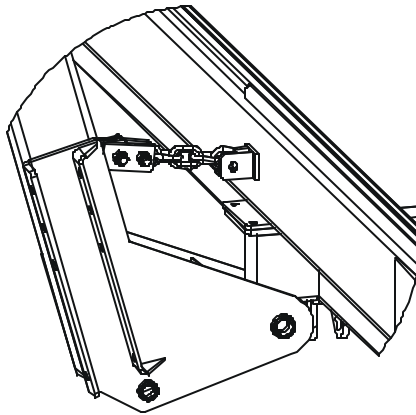


Figure 1 - Locks in Transport Position

1.2 Transporting Instructions

To ensure safe transport of the Bale Mover 1400, forks should be in the transport position with the transport chains in place. To put transport chains in place, raise the forks until the transport pin can be put in place safely. Lower forks to take the slack up in the transport chains.

1.3 Bale Size Adjustment

The bale size is adjustable through the fork adjusting plate. By moving the forks (Figure 2), you adjust for the correct size of bale.



Figure 2 – Adjusting Forks

1.4 Field Instructions

For proper operation, the Bale Mover 1400 should run at a field speed of 3-4 mph (4.8-6.5 km/h). When picking bales, a full stop is not required. Bales are picked and placed on the bed continuously by lifting the bale into position and moving the preceding bales back to fit the new bale on.

2.0 Maintenance Instructions

To ensure a long operating life of your Bale Mover 1400, follow these maintenance procedures.

- Periodically check tire air pressure to maintain equal tire pressure. The operating tire pressure should be 90 psi.
- Periodically check all bolts for tightness.
- Periodically check the chain tightener. The chain should be just off the bottom of the rail. This can be seen through the sight hole in the rail.
- Wheel bearings should be repacked yearly.
- Grease the following points as described.

2.1 Grease Locations



Figure 3 - Pivot Arm Grease Location

Grease No	Description	Frequency
1	Arm, Pivot, Right	Daily

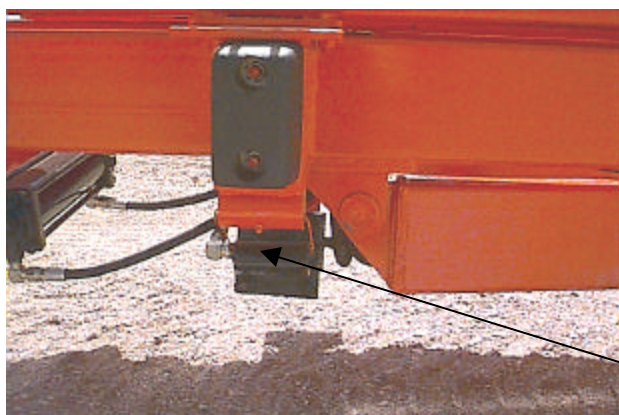
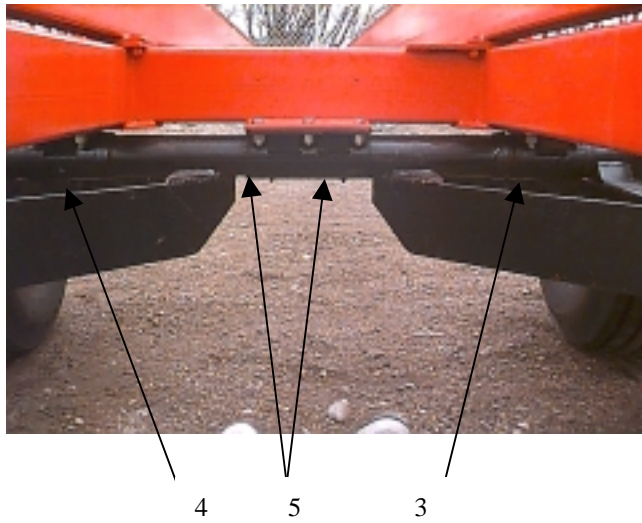


Figure 4 - Pivot Slide Arm Grease Location

Grease No	Description	Frequency
2	Arm, Slide, Pivot, Right	Daily



Grease No	Description	Frequency
3	Pocket, Beam Walking, Left,	Weekly
4	Pocket, Beam Walking, Right	Weekly
5	Pocket, Beam Walking, Middle	Weekly

Figure 5 - Oscillating Tandem Grease Location



Grease No	Description	Frequency
6	Pin, Sprocket, Rear, Left,	Weekly
7	Pin, Sprocket, Rear, Right,	Weekly

Figure 6 - Rear Sprocket Pin

2.2 Tire Removal Procedure

There are several methods used to remove the tires on the 14 Bale Mover. Following are the common procedures used.

RAISING THE TIRES OFF THE GROUND

A.

1. Leaving the tractor hitched to the Bale Mover and apply the parking brake.
2. Block the Bale Mover tires opposite the side which the tire will be removed.
3. Use two jacks (hydraulic or pin) under the main frame of the Bale Mover to raise the side of the bale Mover high enough to swing the axle so the tire can be removed. Block the Bale Mover frame in this location.

B.

1. Leave the tractor hitched to the Bale Mover and apply the parking brake.
 2. With the deck cylinder retracted, secure the end of the Bale Mover rails so they cannot be lowered. This can be done by blocking each rail or backing the bale mover into a sloped roadway and then applying the tractor parking brake.
 3. Extend the deck cylinder to raise the tires off the ground.
- **ENSURE THE DECK AND/OR DECK CYLINDER IS SECURED SO THE DECK CANNOT BE LOWERED****

TIRE REMOVAL

A.

1. With the tires off the ground, rotate the axle so the tire to be removed is below the frame. Secure the axle so the axle cannot rotate.
2. Remove the tire.

B.

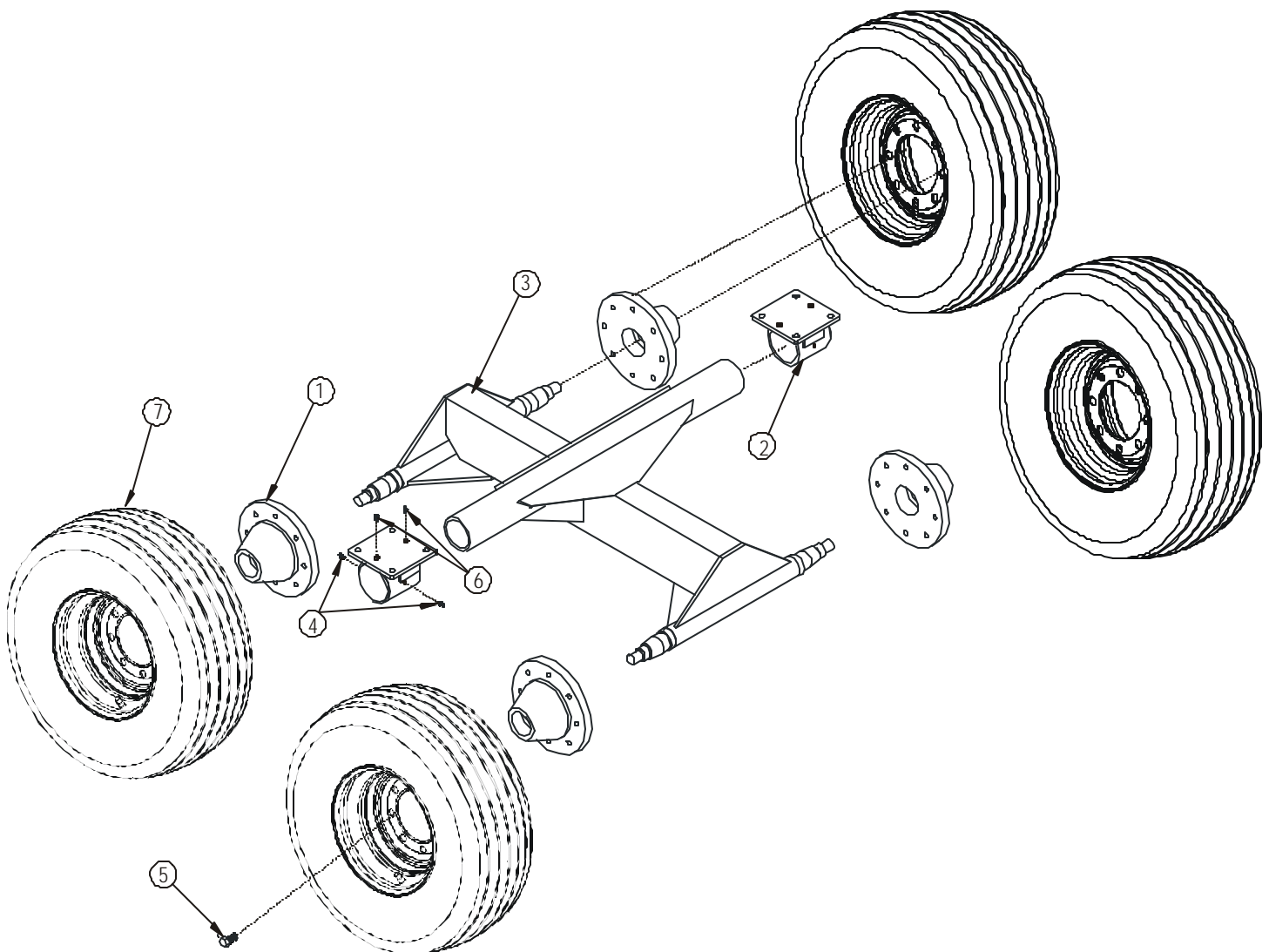
1. With the tires off the ground, remove the outside axle mount and loosen the inside axle mount. Remove the axle with tires attached.
2. Remove the tire.

This page intentionally left blank.

3.0 Parts Information

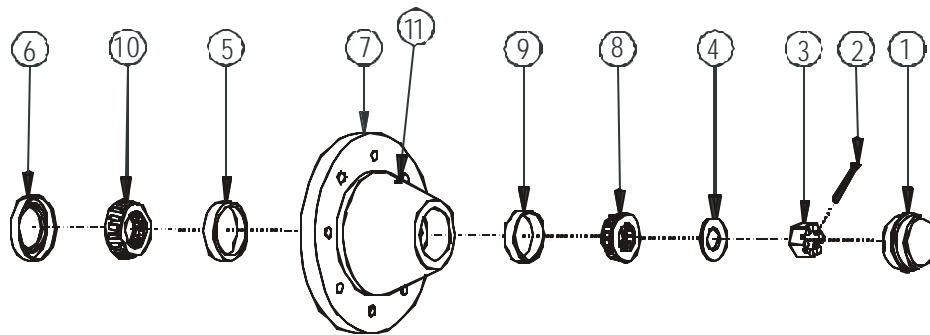
3.1 Tandem Axle Assembly

Item	Part No.	Description	Quantity
1	30102	Hub, EM5500, 5000lbs, Complete	8
2	45243	Pocket, End, Axle	4
3	45242	Axle	2
4	91704	Zerk, 1/4 - 28, 90°	8
5	91061	Bolt, Wheel, 9/16	64
6	30207	Zerk, 1/4-28, Straight	8
7	31795	Wheel, Complete, Off-white	8



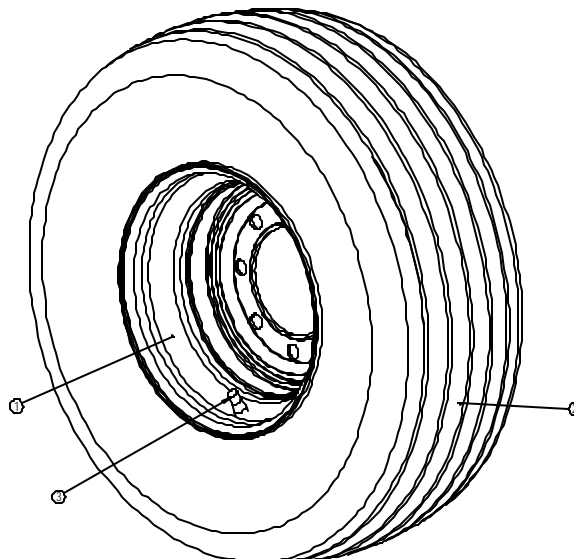
3.1.1 Hub Assembly (Part No. 30102)

ITEM NO.	PART NO.	DESCRIPTION	QTY.
1	30220	SUSP, CAP, DUST	1
2	30221	PIN, COTTER, 3/16X1-3/4	1
3	30222	NUT, SLOTTED, 1, UNF	1
4	30223	WASHER, FLAT, 1IDX2OD, .2385	1
5	30226	DRV, BRG, RACE, INNER, 1.781	1
6	30228	DRV, BRG, SEAL, 1.98	1
7	30229	SUSP, HUB, EM5500, 8BOLT	1
8	91111	DRV, BRG, TAPERED, OUTER, 1.375	1
9	91131	DRV, BRG, RACE, OUTER, 1.375	1
10	91133	DRV, BRG, TAPERED, INNER, 1.781	1
11	30207	ZERK, 1/4-28, GF641, STRAIGHT	1



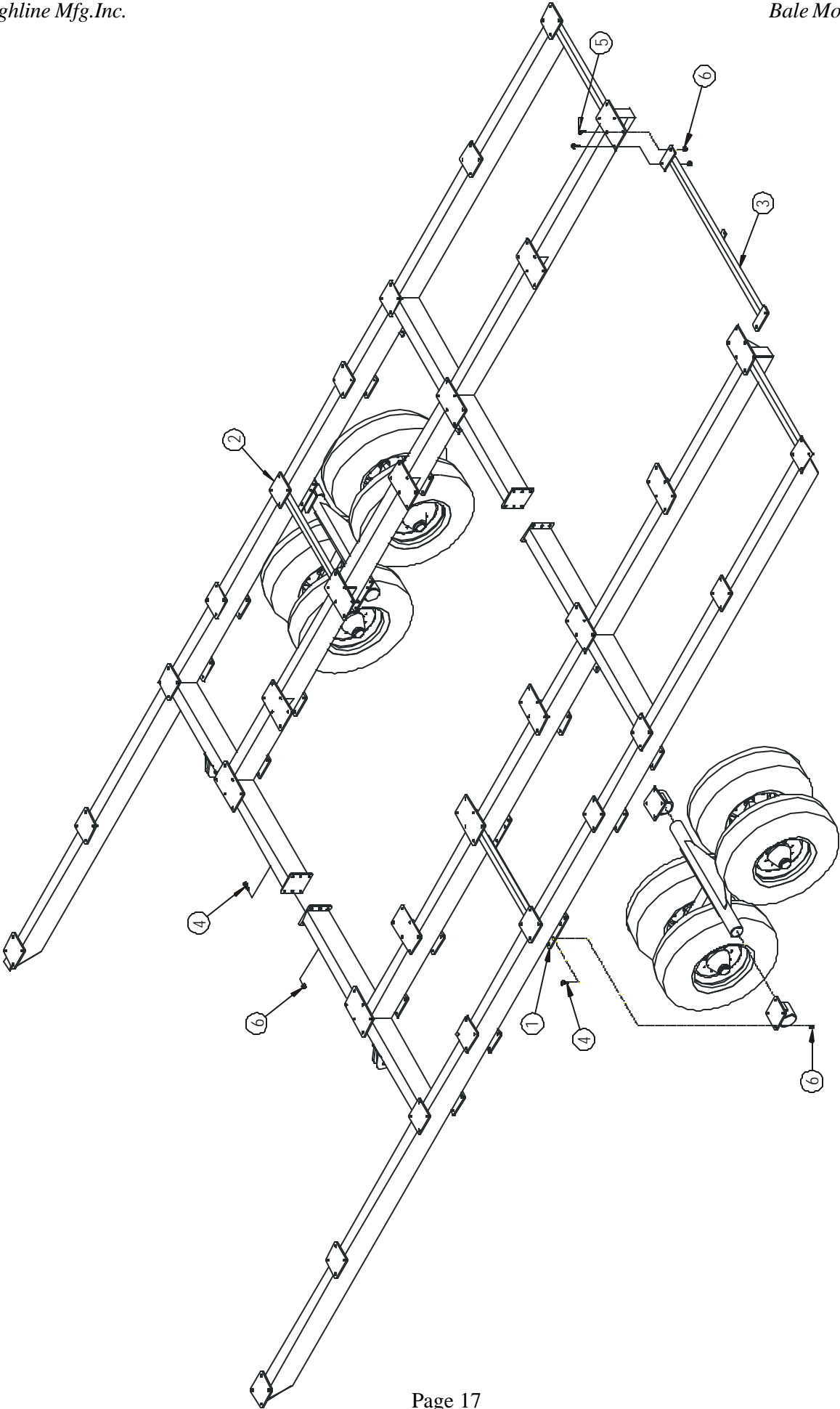
3.1.2 Wheel Assembly (Part No. 31795)

ITEM NO.	PART NO.	DESCRIPTION	QTY.
1	30104	RIM, 1.5X8, -1.5, 8, OFFWHITE	1
2	30100	SUSP, TIRE, 11LX 15FI, 12PLY	1
3	91048	SUSP, STEM, VALVE, TR801HP	1
4	33014	SUSP, TUBE, 11L-15	1



3.2 Subframe Assembly

Item	Part No.	Description	Quantity
1	45246	Subframe, Main, Left	1
2	45245	Subframe, Main, Right	1
3	40105	Crossmember, Sign, Slow Moving	1
4	30106	Bolt, ½ x 1-½	28
5	30107	Bolt, ½ x 1-¾	4
6	31173	Nut, Nylock, ½	32



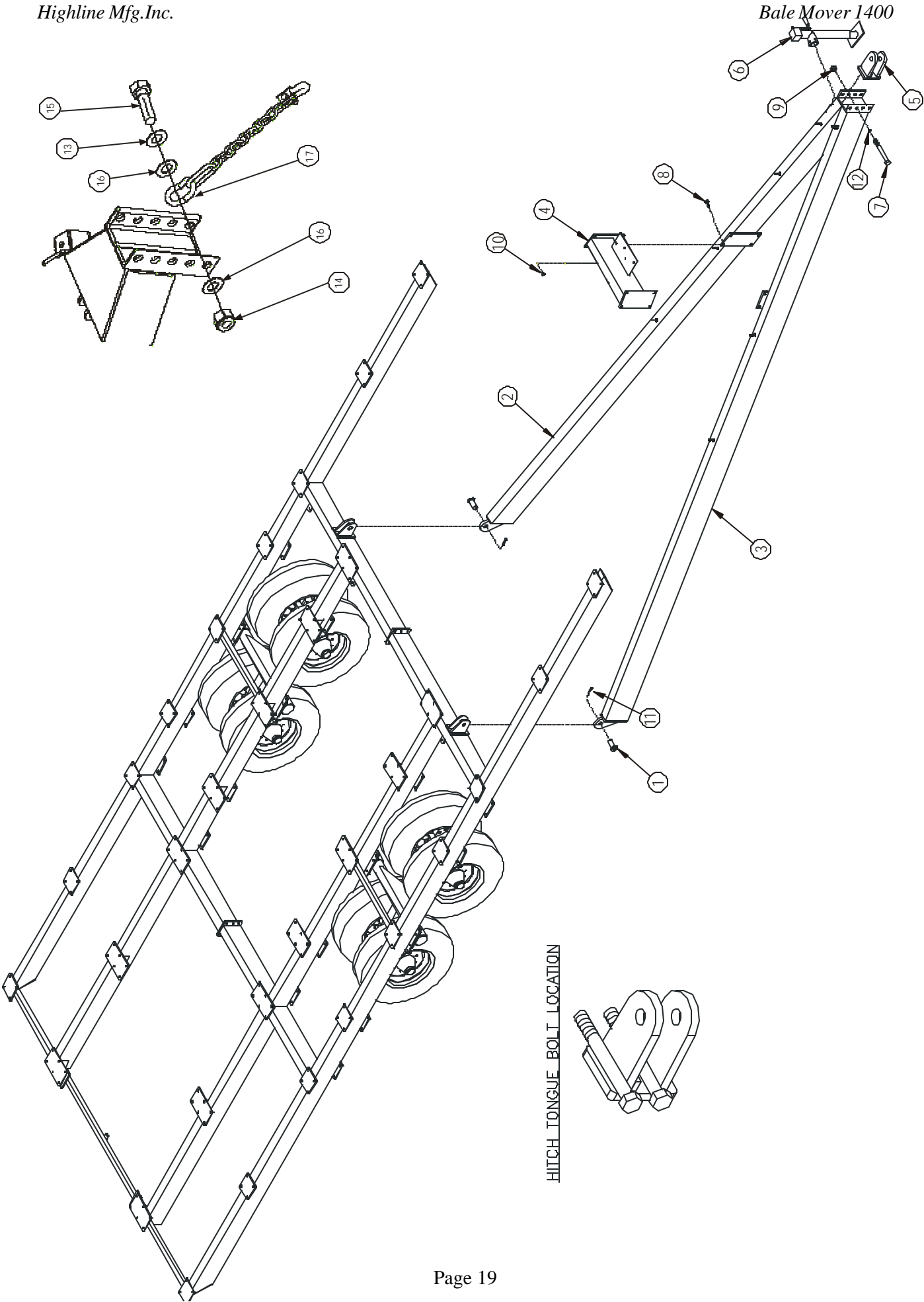
3.3 Hitch Assembly

Item	Part No.	Description	Quantity
1	40003	Pin, Hitch	2
2	40062	Hitch, A-Frame, Left	1
3	40063	Hitch, A-Frame, Right	1
4	40487	Hitch, Crossmember	1
5	40142	Hitch, Tongue, Double	1
6	31933	Jack, Sidewind, 7000lb x 15	1
7	31038	Bolt, Hex, 1 x 7-1/2	2
8	31053	Bolt, Hex, 5/8 x 1-3/4	8
9	31162	Nut, Hex, 1	2
10	31178	Nut, Nylock, 5/8	8
11	31182	Pin, Cotter, 1/4 x 2-1/2	2
12	31243	Washer, Lock, 1,ZP	2

Optional Safety Chain

ITEM NO.	PART NO.	DESCRIPTION	QTY.
13	31243	WASHER, LOCK, 1, ZP	1
14	31162	NUT, HEX, 1, UNC, GR5, ZP	1
15	31471	1"X3" HEX BOLT, UNC, GR5	1
16	31235	1" FLAT WASHER	2
17	31590	CHAIN, SAFETY, ASAE, 10100LB, 5'4"	1

*Place hitch crossmember (Item 4) in place leaving bolts loose.
Insert double tongue hitch (Item 5) and tighten making sure angles are flush.



3.4 Rail and Crossmember Assembly

Item	Part No.	Description	Quantity
1	40006	Subframe, Rear	1
2	45235	Subframe, Front	1
3	40143	Subframe, Middle	1
4	40486	Tube, Deck, Cylinder	1
5	40144	Rail, Outside, Left	1
6	40145	Rail, Inside, Left	1
7	40146	Rail, Outside, Right	1
8	40147	Rail, Inside, Right	1
9	E4740	Bracket, Solenoid, Hyd	1
10	31016	Bolt, Hex, ½ x 1-½	184
11	31173	Nut, Nylock, 1/2	184
12	40140	Bracket, Cylinder	2
13	31052	Bolt, Hex, 5/8 x 2	12
14	31178	Nut, Nylock, 5/8	12

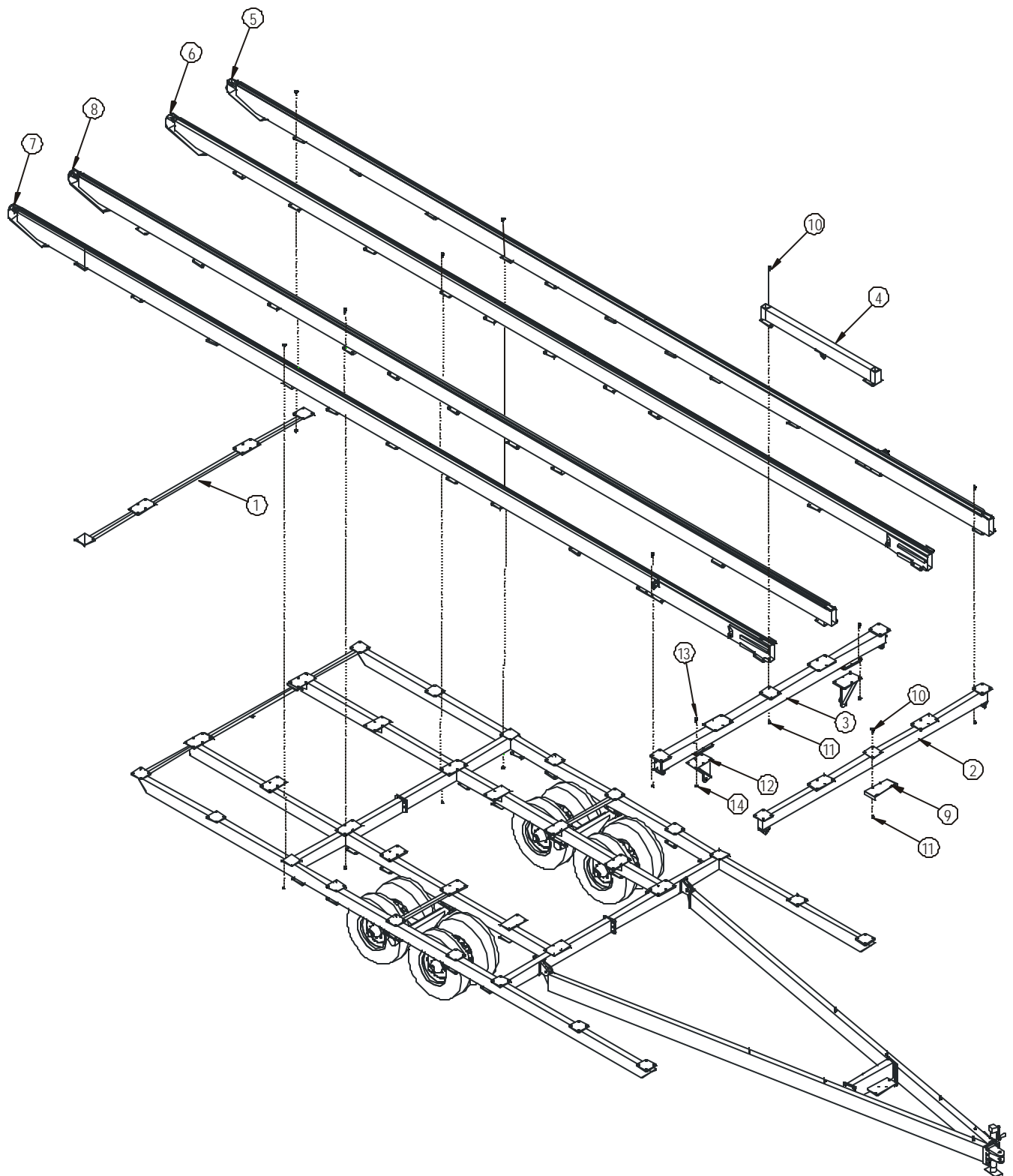
*Install all rails on subframe leaving bolts loose.

Install front crossmembers leaving bolts loose.

Install cylinder deck tube leaving bolts loose.

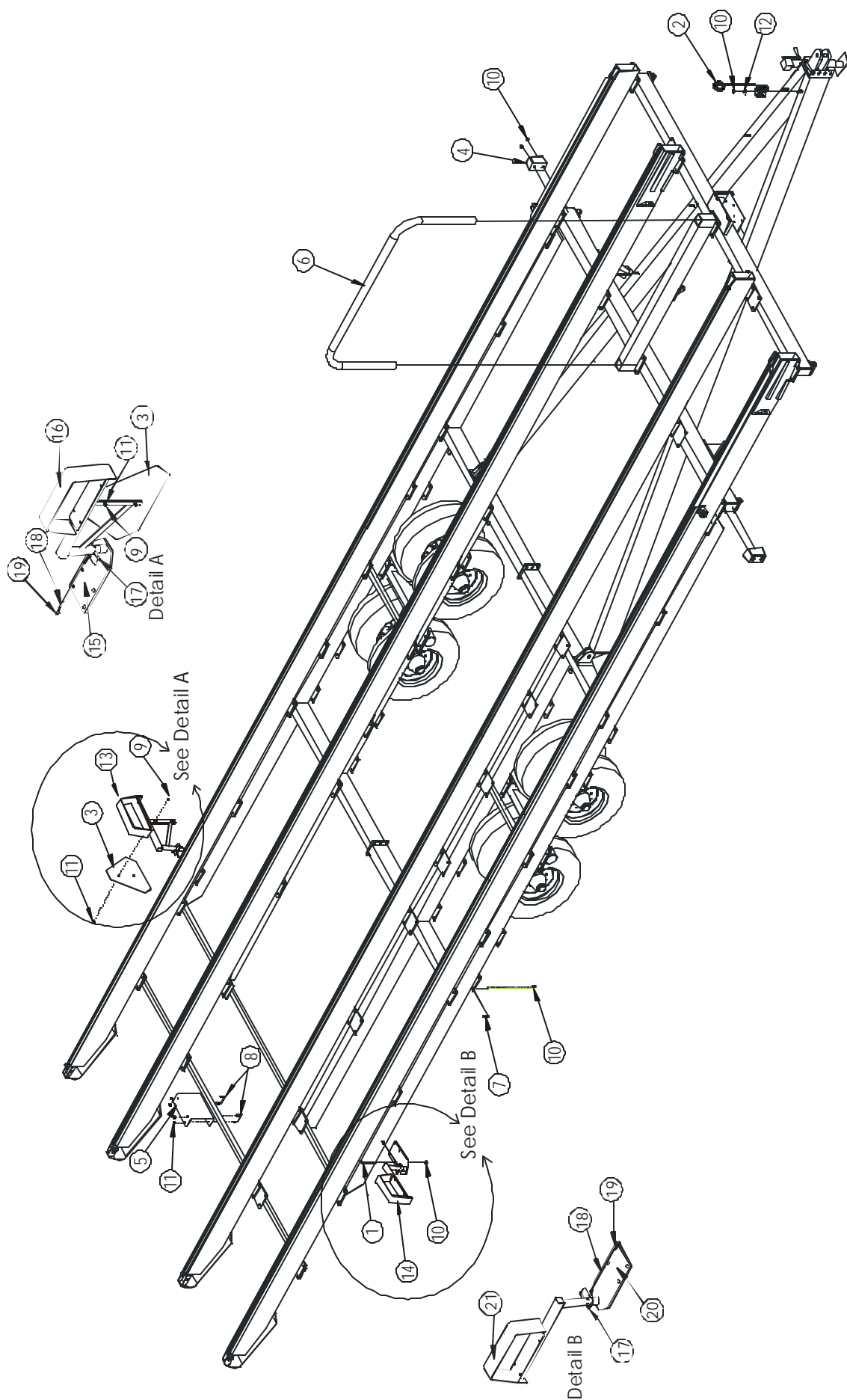
Install deck cylinder in the fully closed position between hitch and deck tube.

Lift hitch until front of Bale Mover is fully supported, then tighten all bolts.



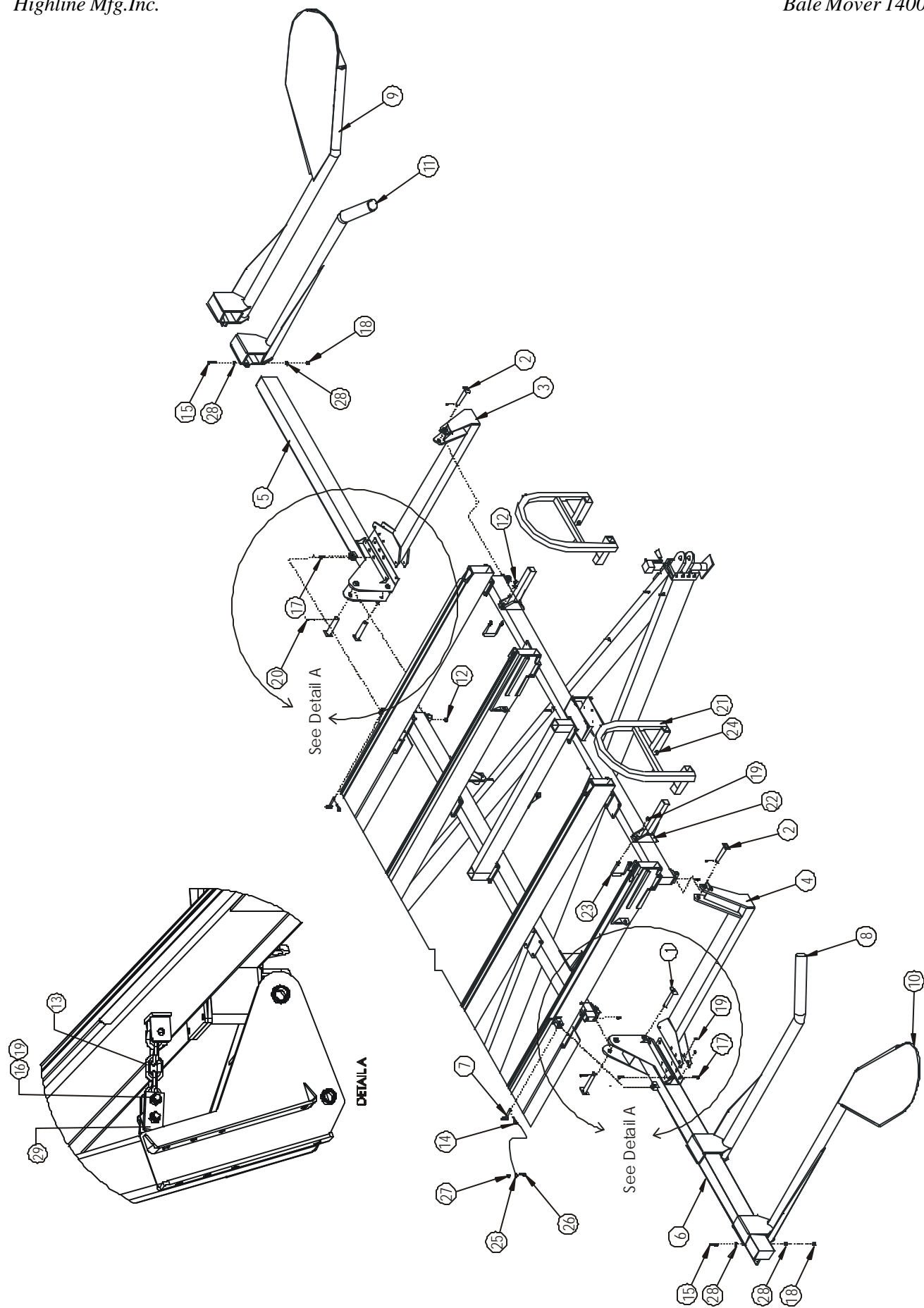
3.5 Subframe Supports

Item	Part No.	Description	Quantity
1	31061	Bolt, U, Square, ½ x 3 x 7	4
2	30206	Hose, Holder, ½	1
3	92028	Sign, Slow Moving	1
4	92061	Bumper, Rubber	2
5	E4814	Bracket, Light, Middle	1
6	E4779	Tube, Divider, Bale	1
7	31016	Bolt, Hex, ½ x 1-½	20
8	31663	Bolt, U, Square, ¼ x 1-½ x 2-¼	2
9	31033	Bolt, Hex, 1/4x3/4, UNC, GR5, ZP	14
10	31173	Nut, Nylock, ½	33
11	31174	Nut, Nylock, ¼	18
12	31236	Washer, Flat, 1/2, ZP	1
13	45282	Assy, Mount, Light, BM, Left	1
14	45283	Assy, Mount, Right, BM, Right	1
15	45278	Mount, Light, BM, Left	1
16	45280	Mount, Brkt, Light, BM, LT	1
17	31442	Pin, Hitch, 3/8x3	2
18	E5351	Tether, 16"	2
19	30559	Clamp, Rope, Wire, 1/16	4
20	45279	Mount, Light, BM, Right	1
21	45281	Mount, Brkt, Light, BM, RT	1



3.6 Fork Assembly

Item	Part No.	Description	Quantity
1	40008	Pin, Arm, Pivot	2
2	40010	Pin, Arm, Side, Pivot	4
3	45237	Arm, Pivot, Left	1
4	45236	Arm, Pivot, Right	1
5	40148	Arm, Slide, Pivot, Left	1
6	40149	Arm, Slide, Pivot, Right	1
7	40019	Pin, Transport	2
8	40151	Fork, Right	1
9	40152	Fork, Left, ¼ Turn	1
10	40153	Fork, Right, ¼ Turn	1
11	40154	Fork, Left	1
12	30207	Zerk, 1/4-28, Straight	4
13	E5653	Chain, Link, 1/2, GR40, 5 Links	2
14	91608	Pin, Hair, 1/8 x 2-9/16	2
15	31041	Bolt, Hex, ¾ x 3	8
16	31336	Bolt, Hex, 5/8 x 3, UNC, GR5, ZP	4
17	31051	Bolt, Hex, 5/8 x 1-1/2	16
18	31175	Nut, Nylock, ¾	8
19	31178	Nut, Nylock, 5/8	26
20	31182	Pin, Cotter, 1/4 x 2-1/2	6
21	40088	Bumper, Bale	2
22	40118	Mount, Bumper, Bale	4
23	30269	Bolt, U, Square, 5/8 x 6 x 4-1/2	4
24	31016	Bolt, Hex, 1/2 x 1-1/2	4
25	E3764	Tether, Cable, Shield, Small	2
26	31070	Bolt, Hex, 1/2 x 2	2
27	31173	Nut, Nylock, 1/2	2
28	31238	Washer, Flat, 3/4, ZP	16
29	E5652	Lug, Extension	4



3.7 Chain Assembly

Item	Part No.	Description	Quantity
1	40115	Tightner, Motor, Left	2
2	40116	Tightner, Motor, Right	2
3	40121	Pin, Sprocket, Rear	4
4	30197	Pin, Spring, 3/16 x 1-1/2	4
5	30207	Zerk, 1/4-28, Straight	4
6	91508	Chain, C2062H x 304PI	8
7	91510	Chain, Connector, C2062H	8
8	30651	Roller, Chain, 3 OD x 1-1/4 ID	4
9	92024	Bushing	4
10	31159	Nut, Acme, 1", 5tpi, RH	8
11	31243	Washer, Lock, 1, ZP	4
12	91517	Chain, Length, C2064H	Per foot
*13	91511	Link, Connecting, Half, C2062	1

*Not Shown

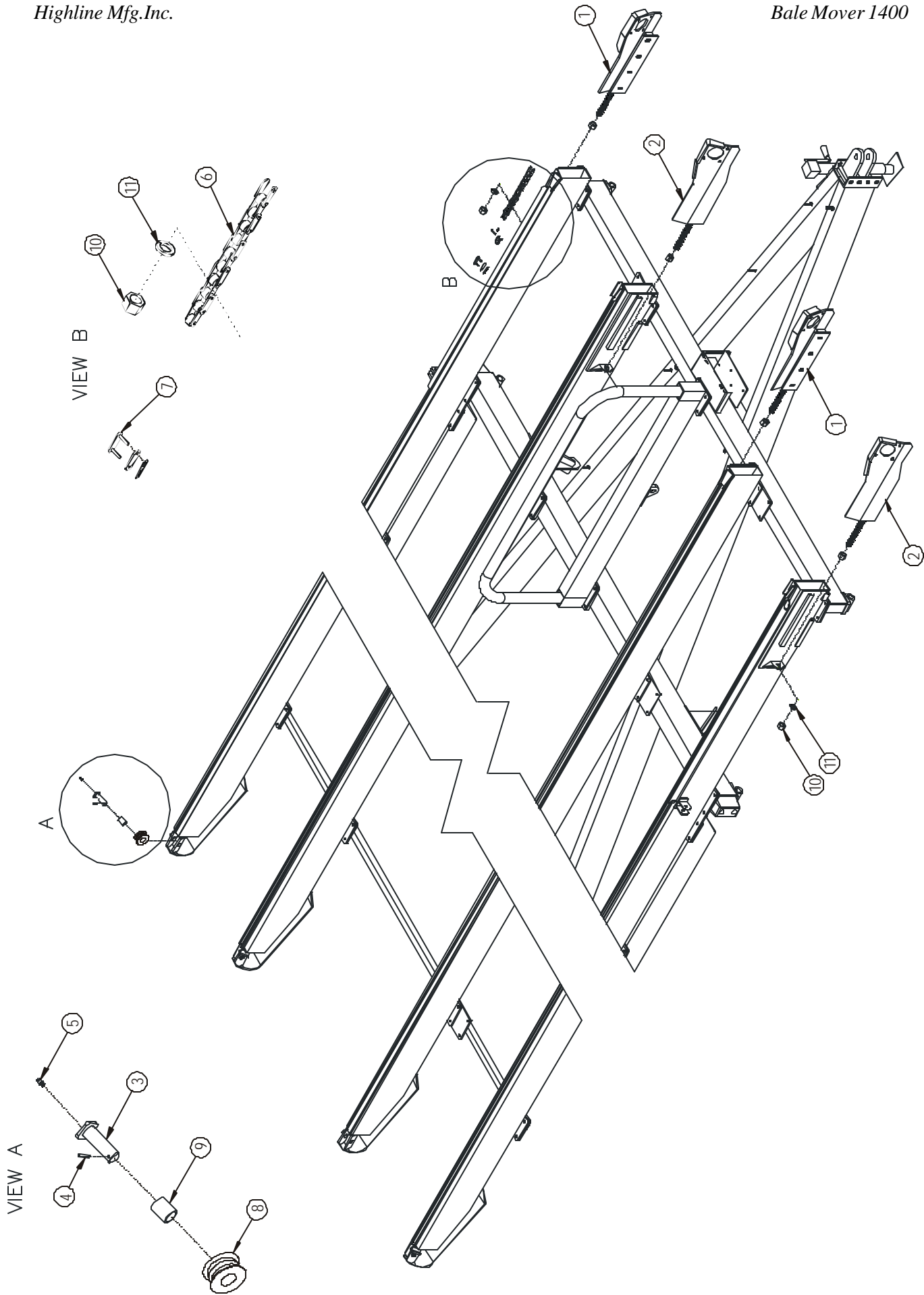
******Install inside motor hydraulic fittings before installing chain and chain tighteners.

The motors have been loosened so that the fittings can be turned into place.

The fittings go in the back port of the motors.

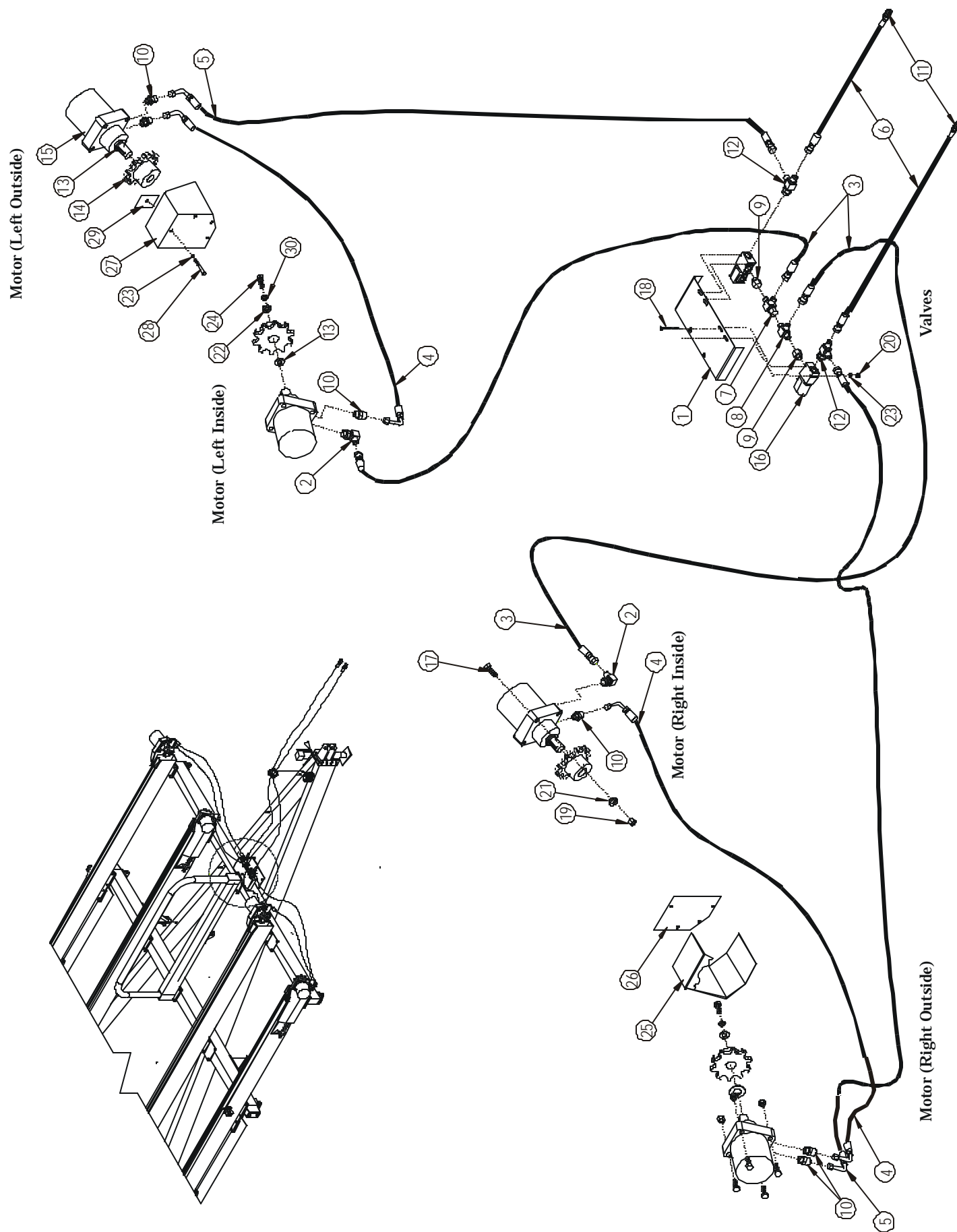
Chain is fed from the back of the machine. This is accomplished by feeding a piece of wire from the front through the tube and pulling the chain through. One person can do this, but two people make the operation easier.

The chain should be tightened so that the top of the chain is visible in the bottom of the sight hole on the rail.



3.8 Motor Hydraulics

Item	Part No.	Description	Quantity
1	E4740	Bracket, Solenoid	1
2	30145	Fitting, Elbow, 10MB-8MJ90	2
3	30146	Hose, 1/2 x 33, 8FJX-8FJ90T, 1W	2
4	30147	Hose, 1/2 x 52, 8FJ90TL, 1W	2
5	30148	Hose, 1/2 x 72, 8FJX-8FJ90TL, 1W	2
6	30149	Hose, 1/2 x 108, 8FJX-8MP, 1W	2
7	30150	Fitting, Tee, 8FJXR-8MJT	1
8	30313	Fitting, Tee, 8MJ-8MJ-8MJ	1
9	30152	Fitting, Adapter, 8MB-8FJX	2
10	30204	Fitting, Adapter, 10MB-8MJ	6
11	30209	Fitting, Pioneer, Male, 8FP	2
12	30214	Fitting, Tee, 8MBR-8MJT	2
13	32071	Washer, Motor, 1-1/4 x 1-7/8	4
14	92063	Drv, Sprocket, 2062, 10 Tooth, 1-1/4	4
15	92184	Motor, Hydraulic, 45 cu.in., 2000psi	4
16	92070	Valve, Solenoid	2
17	31797	Bolt, Socket, 1/2 x 2-3/4, UNC, Gr5	16
18	31580	Bolt, Carr, 1/4 x 2-1/2, UNC, GR5, ZP	4
19	31173	Nut, Nylock, 1/2	16
20	31174	Nut, Nylock, 1/4	4
21	31236	Washer, Flat, 1/2, ZP	16
22	31240	Washer, Flat, 5/8, ZP	4
23	31237	Washer, Flat, 1/4, ZP	3
24	31545	Bolt, Hex, 5/8 x 1, UNF, GR5, ZP	4
25	E4802	Housing, Guard, BM, Left	2
26	E4803	Plate, Face, Guard	4
27	E4810	Housing, Guard, BM, Right	2
28	31029	Bolt, Hex, 1/4 x 1	16
29	31593	Clip, Automotive, 1/4	16
30	31218	Washer, Lock, 5/8, ZP	4

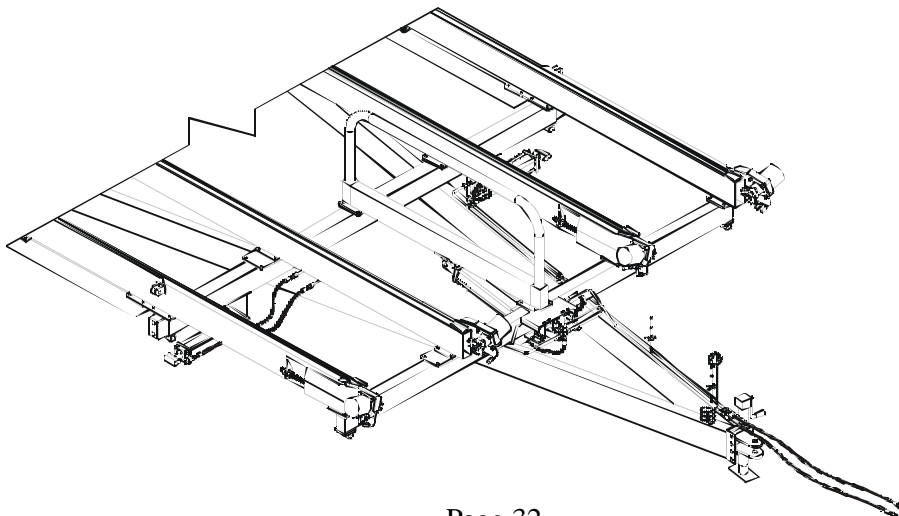


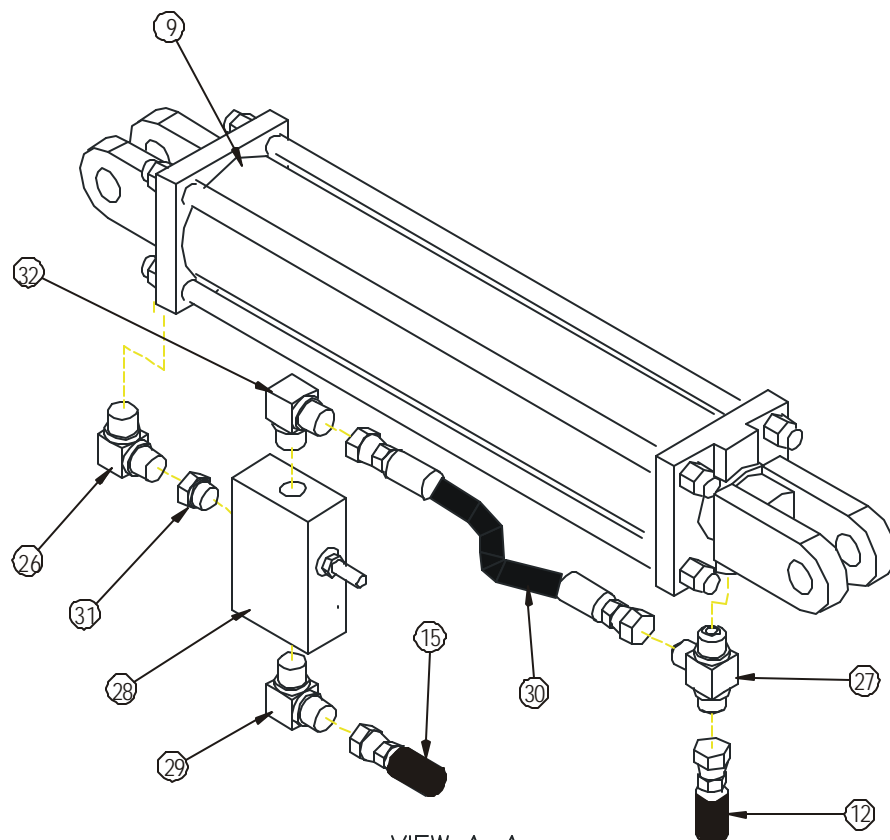
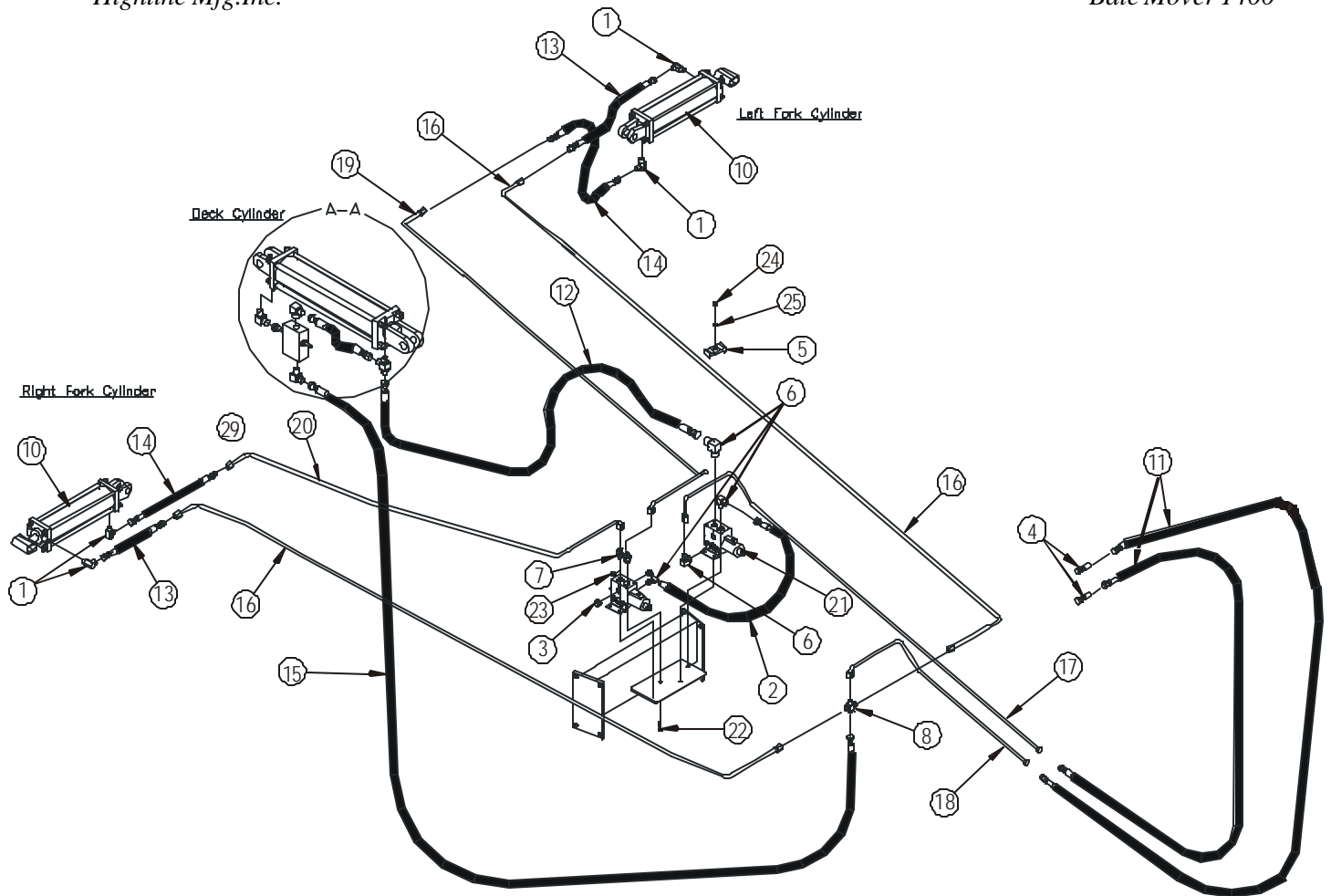
3.8.1 Orbit Motor Assembly (Part No. 92184)

ITEM NO.	PART NO.	DESCRIPTION	QTY.
1	32647	HYD,MOTOR,SEALKIT,ROLLER,STATOR	1
2	32651	BEARING,THRUST,REAR	1
3	32720	BRG,HOUSING,FRONT	1
4	32649	BEARING,HOUSING,REAR,1/2"	1
5	32721	KIT,ROTOR	1
6	32722	KIT,LINK,DRIVE	1
7	32723	KIT,HOUSING	1
8	32724	KIT,SHAFT	1
9	32725	KIT,MANIFOLD	1
10	32726	PLATE,BALANCE	1
11	32727	COVER,END	1
12	32728	KIT,BOLT	1
13	32639	BEARING,THRUST,FRONT	1

3.9 Cylinder Hydraulics (Part No. 40174)

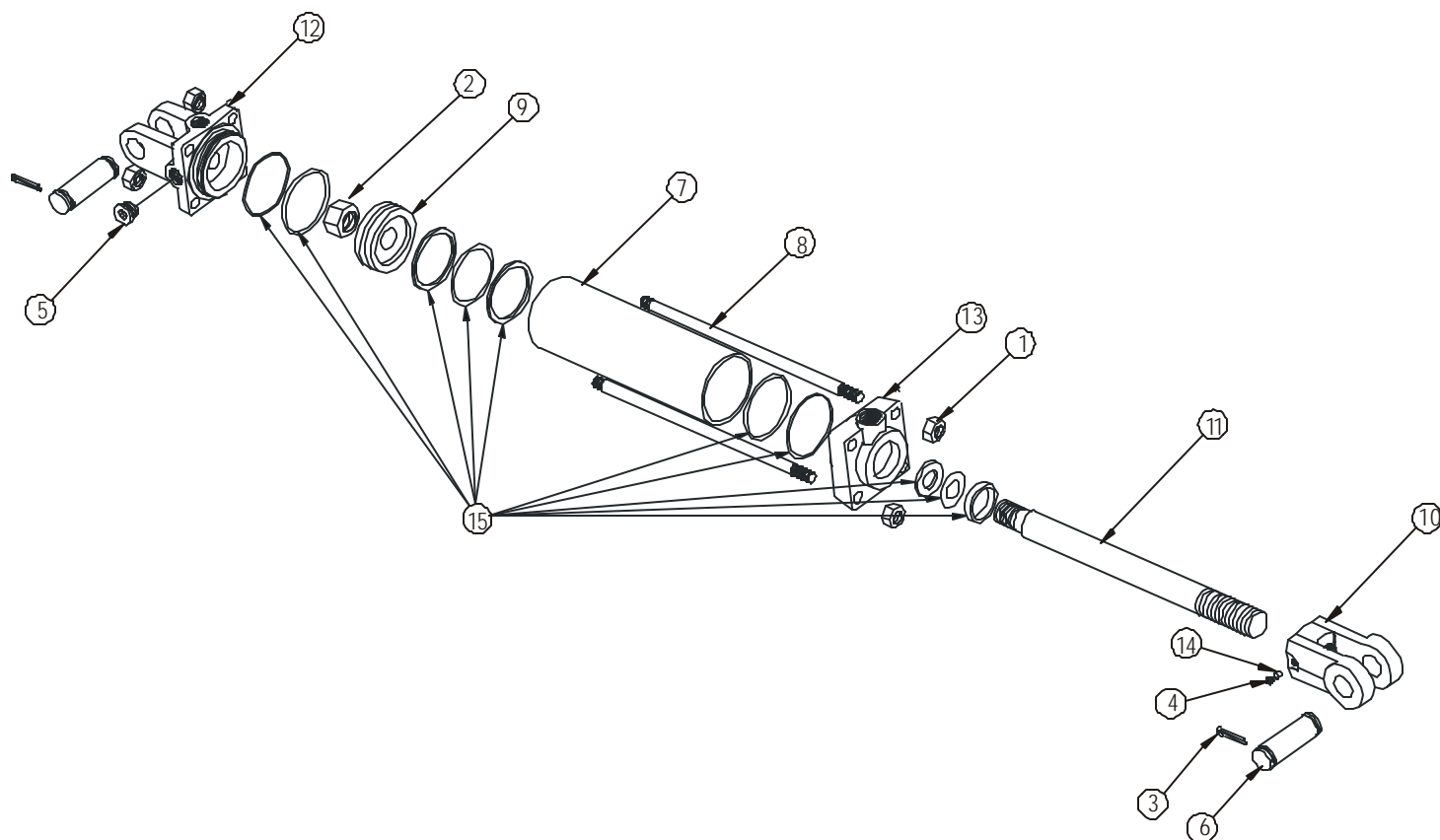
Item	Part No.	Description	Quantity
1	30212	Fitting, Elbow, 8MP-8MJ90	4
2	90313	Hose, 3/8 x 18, 8FJX-8FJX, 1W	1
3	30200	Fitting, Plug, 8MB	2
4	30209	Fitting, Pioneer, Male, 8FP	2
5	30210	Clamp, Hose, 1/2	6
6	30211	Fitting, Elbow, 8MB-8MJ90	4
7	30215	Fitting, Adapter, 8MB-8MJ	2
8	30216	Fitting, Cross, 8MJ	1
9	90103	Cylinder, 3.5 x 16, 1.5, 8FP	1
10	90120	Cylinder, 3.5 x 13, 1.5, 8FP	2
11	90223	Hose, 3/8 x 58, 8MJ-8MP, 1W	2
12	30583	Hose, 3/8 x 30, 8FJ90TL, 180	1
13	90243	Hose, 3/8 x 44, 8FJX-8MJ, 1W	2
14	90245	Hose, 3/8 x 28, 8FJX-8MJ, 1W	2
15	90271	Hose, 3/8 x 42, 8FJX-8FJX, 1W	1
16	90421	Line, Steel, 1/2 x 0.049, 8FJ	2
17	90422	Line, Steel, 1/2 x 0.049, 8FJ	1
18	90423	Line, Steel, 1/2 x 0.049, 8FJ	1
19	90424	Line, Steel, 1/2 x 0.049, 8FJ	1
20	90425	Line, Steel, 1/2 x 0.049, 8FJ	1
21	92089	Valve, Solenoid	2
22	31043	Bolt, Hex, 3/8 x 1, UNC, Gr5, ZP	4
23	31176	Nut, Nylock, 3/8, UNC, ZP	4
24	31177	Nut, Nylock, 5/16, UNC, ZP	6
25	31239	Washer, Flat, 5/16, UNC, ZP	6
26	30580	Fitting, Elbow, 8MP-6MJ90	1
27	32035	Fitting, Tee, 8MPR-8MJ	1
28	31271	Valve, Check, Pilot	1
29	32079	Fitting, Elbow, 6MB-8MJ90	1
30	30582	Hose, 3/8 x 14.5, 8FJX-6FJX, 1W	1
31	30581	Fitting, Adapter, 6FJX-6MB	1
32	32056	Fitting, Elbow, 4MB-6MJ90	1





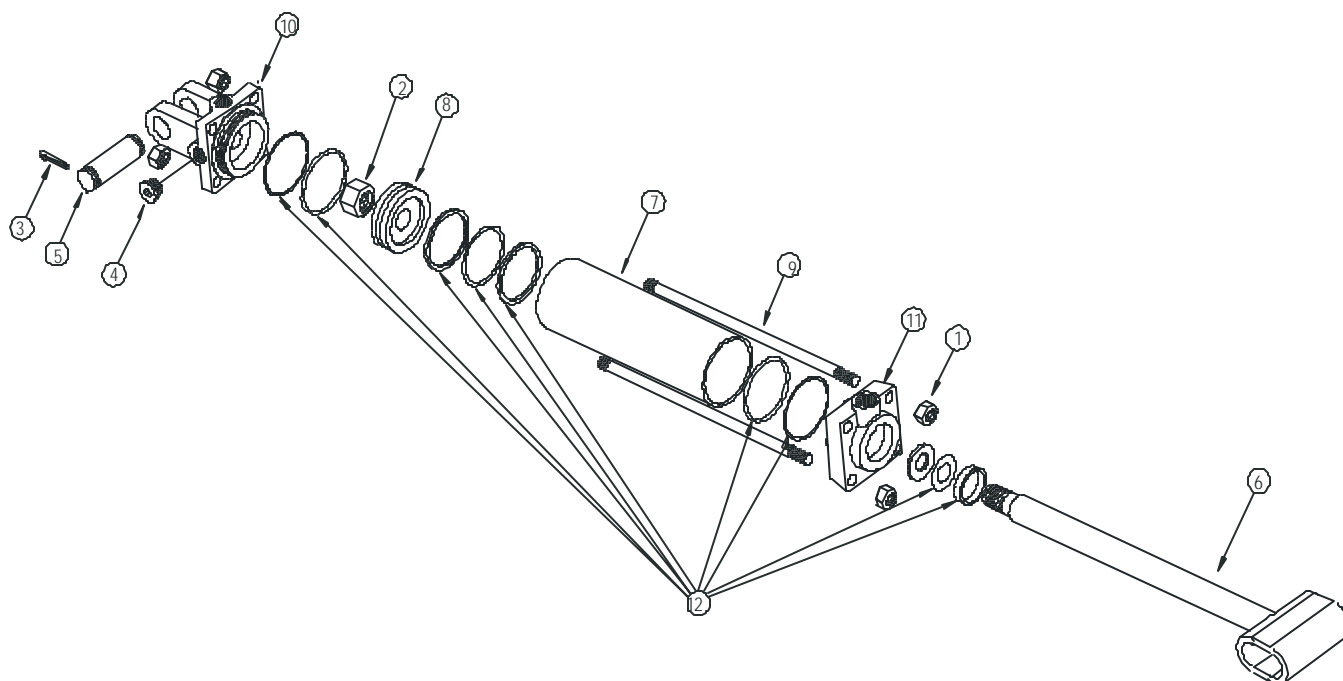
3.9.1 3 1/2 x 16 Cylinder (Part No. 90103)

Item	Part No.	Description	Quantity
1	30236	Nut, Hex, 5/8, UNC, GR5, ZP	8
2	30237	Nut, Hex, 1, UNS, GR5	1
3	30238	Pin, Cotter, 3/16 x 1-1/2	4
4	30239	Setscrew, Socket, 3/8 x 1/2 Knur	1
5	30240	Hyd, Fit, Plug, 1/2-14 NPTF, Dry	1
6	32250	Hyd, Cyl, Pin, 1	2
7	30246	Hyd, Cyl, 3-1/2 x 16, H6206	1
8	30249	Hyd, Cyl, Tie rod, 5/8 x 16, H6678	4
9	30251	Hyd, Cyl, Piston, 3-1/2, H6688	1
10	30253	Hyd, Cyl, Clevis, 1-1/4, 1 Pin	1
11	30252	Hyd, Cyl, Tie Rod, 1-1/2 x 16	1
12	30258	Hyd, Cyl, Clevis, Cap, 3-1/2, NPTF	1
13	30259	Hyd, Cyl, Cap, Rod, 3-1/2 x 1-1/2	1
14	30261	Lock, Thread, Nylock	1
15	30263	Hyd, Cyl, Seal kit, 3-1/2	1



3.9.2 3 1/2 x 13 Cylinder (Part No. 90120)

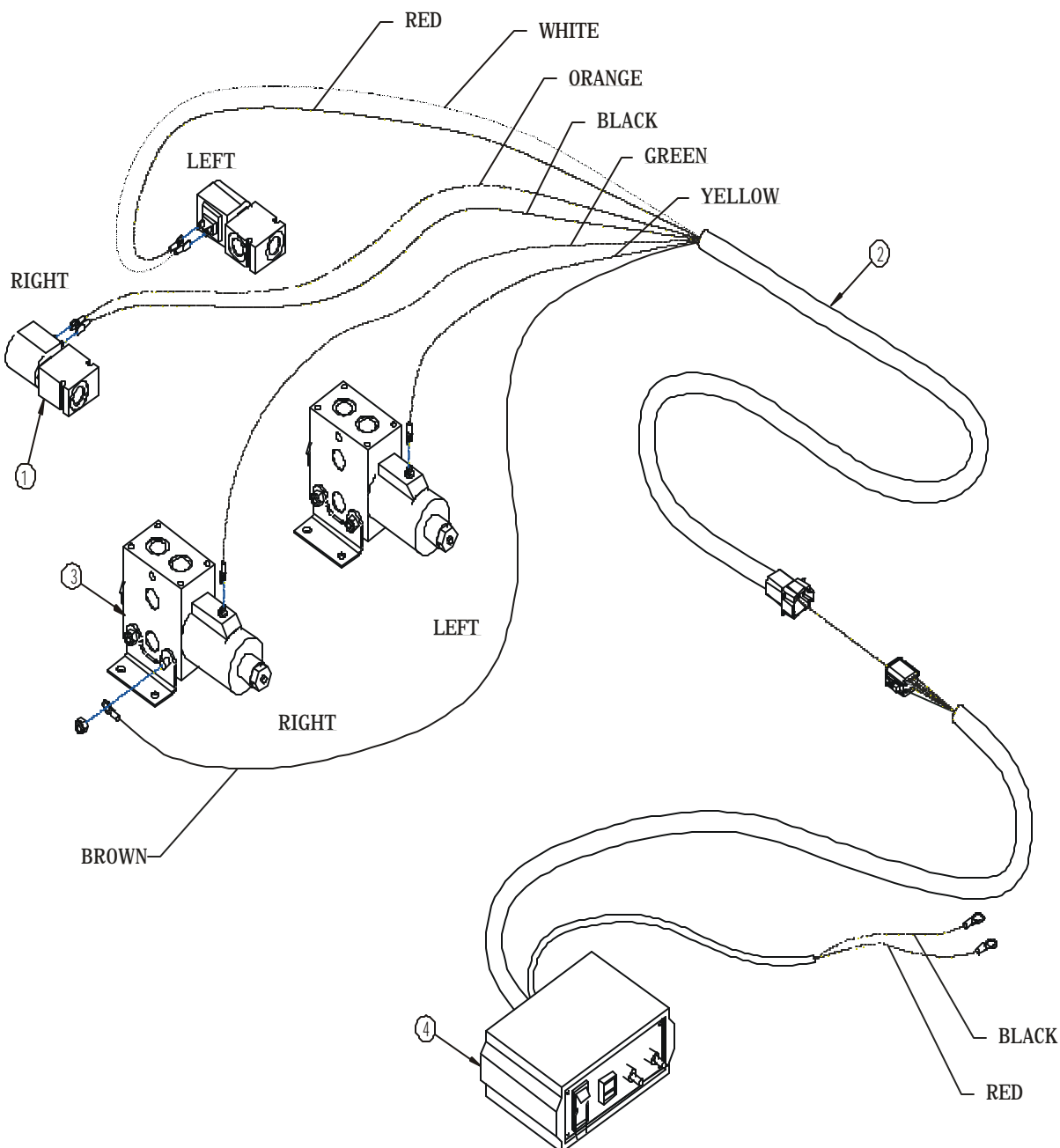
Item	Part No.	Description	Quantity
1	30236	Nut, Hex, 5/8, UNC, GR5, ZP	8
2	30237	Nut, Hex, 1, UNS, GR5	1
3	30238	Pin, Cotter, 3/16 x 1-1/2	2
4	30240	Hyd, Fit, Plug, 1/2-14, NPTF, Dryseal	1
5	32250	Hyd, Cyl, Pin, 1	1
6	30242	Hyd, Cyl, Rod, 1-1/2 x 17	1
7	30245	Hyd, Cyl, 3-1/2 x 13, H6203	1
8	30251	Hyd, Cyl, Piston, 3-1/2, H6688	1
9	30255	Hyd, Cyl, TieRod, 5/8 x 13, Special	4
10	30258	Hyd, Cyl, Clevis, Cap, 3-1/2, NPTF	1
11	30259	Hyd, Cyl, Cap, Rod, 3-1/2 x 1-1/2, 8FP	1
12	30263	Hyd, Cyl, Seal Kit, 3-1/2	1



3.10 Electrical Schematic

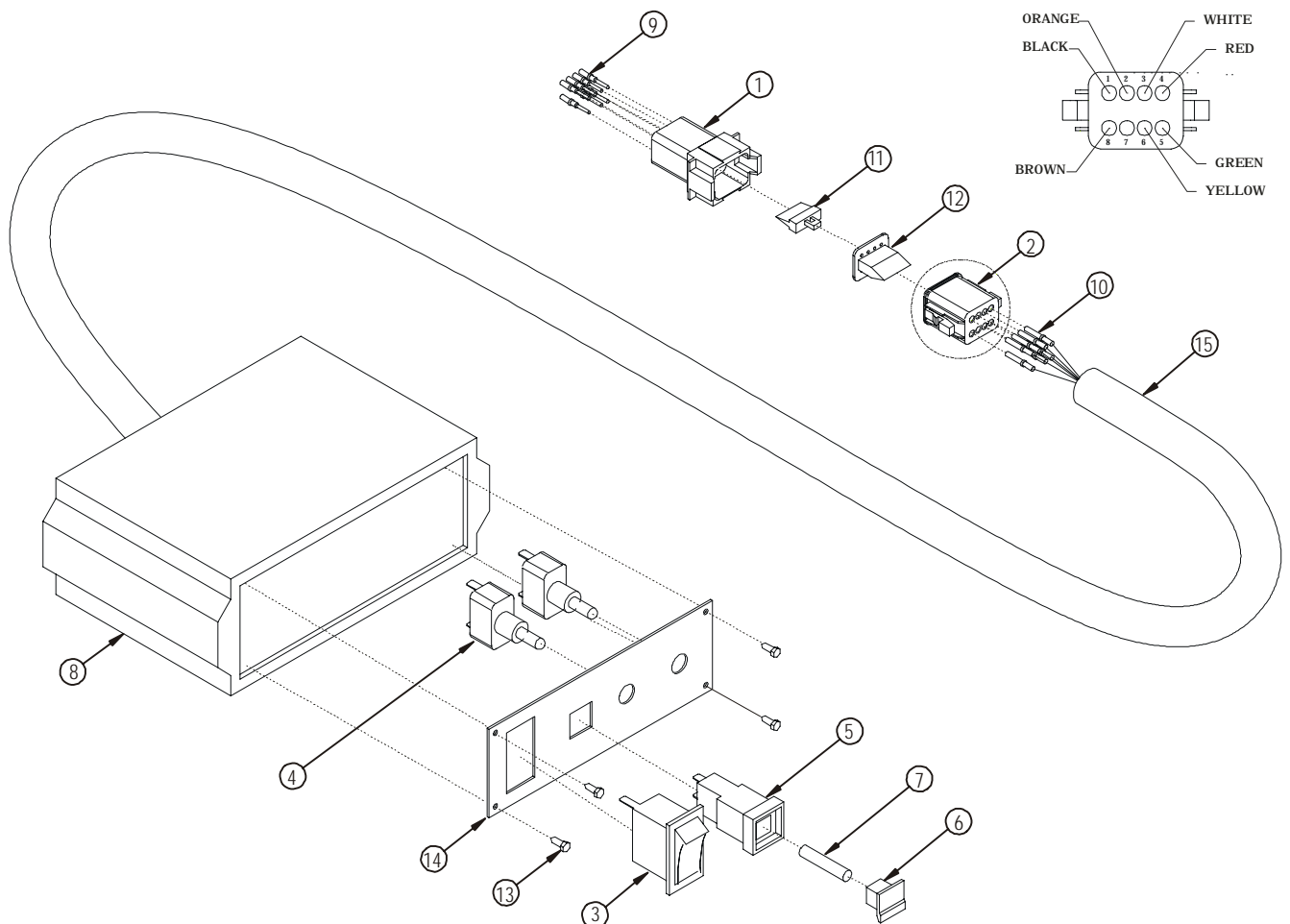
Item	Part No.	Description	Quantity
1	92070	Valve, Solenoid	1
2	92077	Harness, Extension	1
3	92089	Valve, Solenoid	1
4	92125	Box, Control	1

*Black wire goes from control box to tractor ground. Red wire goes from control box to tractor ignition accessory.



3.10.1 Control Box (Part No. 92125) and Wiring Harness (Part No. 92077)

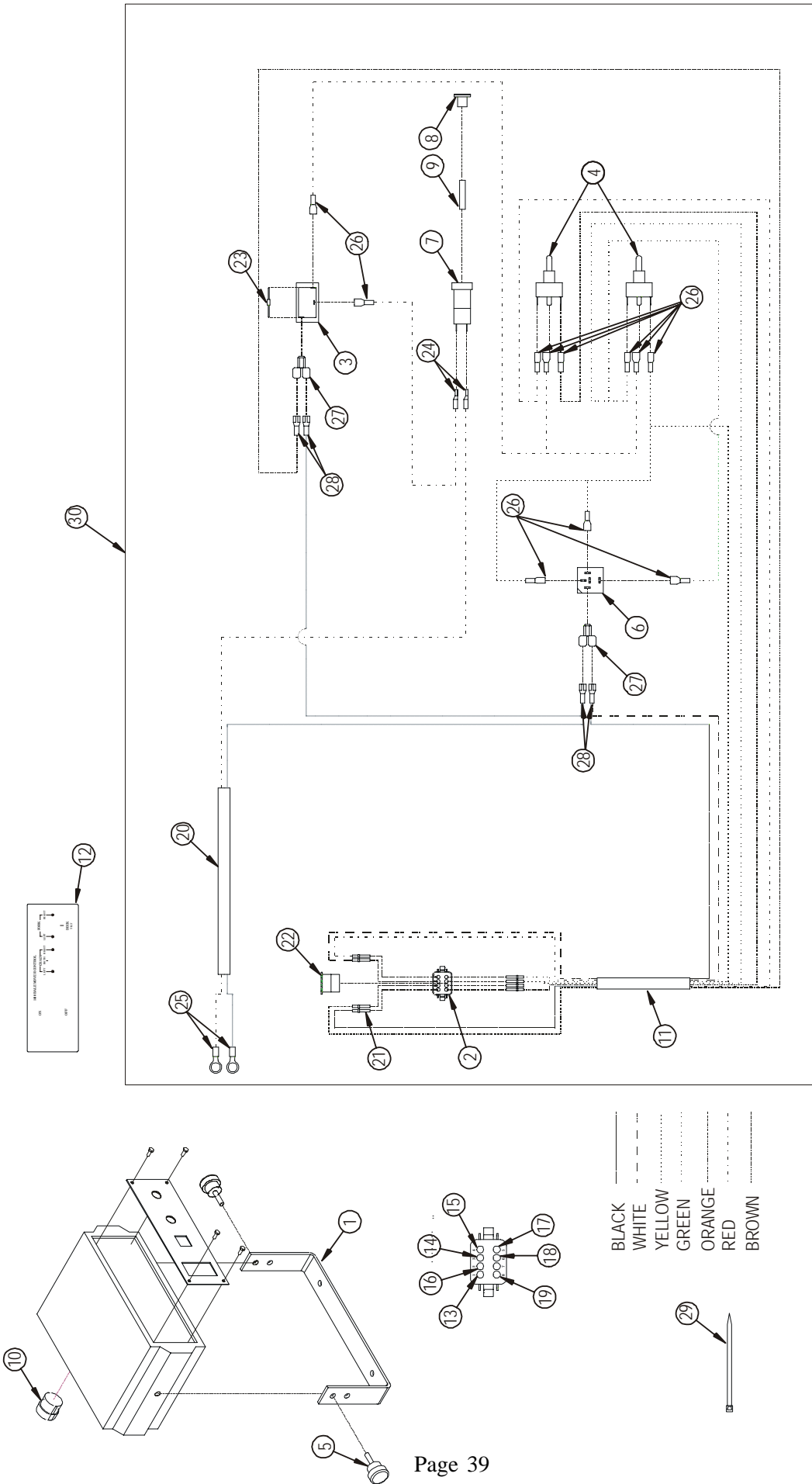
Item	Part No.	Description	Quantity
1	92104	Connector, 7-Pin, Male	1
2	92106	Connector, 7-Pin, Female	1
3	92107	Switch, Rocker	1
4	92108	Switch, Toggle	2
5	92138	Holder, Bus, Body	1
6	92139	Holder, Bus, Cap	1
7	92140	Fuse, Bus, 12V20A, Fast	1
8	92146	Enclosure, Plastic	1
9	92157	Pin, Male	7
10	92158	Connector, Socket, Female	7
11	92161	Wedge, Male	1
12	92162	Connector, Wedge, Female	1
13	92164	Screw, Tapping, #4 x 1/4	4
14	92220	Aluminum, Plate, Box, Control	1
15	90138	Wiring, Box, Control, 14BM (see Page 38)	1



3.10.2 Control Box Schematic

Item	Part No.	Description	Quantity
1	E4751	Bracket, Box, Control	1
2	92106	Connector, 7-Pin, Female	1
3	92107	Switch, Rocker	1
4	92108	Switch, Toggle	2
5	92119	Screw, Thumb	2
6	92130	Relay, 12V, 30A	1
7	92138	Holder, Bus, Body	1
8	92139	Holder, Bus, Cap	1
9	92140	Fuse, Bus, 12V20A, Fast	1
10	92141	Bushing, Relief	1
11	92143	Wire, Corrugated, 1/2	5
12	E5805	Decal, Box, Control	1
13	92149	Wire, 16, Black, Strand	5.5
14	92150	Wire, 16, White, Strand	5
15	92151	Wire, 16, Red Strand	6
16	92152	Wire, 16, Orange, Strand	5
17	92153	Wire, 16, Green, Strand	5
18	92154	Wire, 16, Yellow, Strand	5.5
19	92155	Wire, 16, Brown, Strand	5
20	92156	Cables, 2C – 16GA	8.5
21	92158	Connector, Socket, Female	7
22	92162	Connector, Wedge, Female	1
23	92163	Diode, 12V, 20A	1
24	92165	Connector, QD, Female, 3/16	2
25	92166	Connector, Ring, 3/8, 16GA	2
26	92167	Connector, QD, Female, 1/4	11
27	92168	Connector, ADP, F/M/M, 1/4	2
28	92169	Connector, QD, Female, 1/4	4
29	92170	Tie, Cable, 4, Black	5
30	90138	Wiring,Box,Control,14BM	1

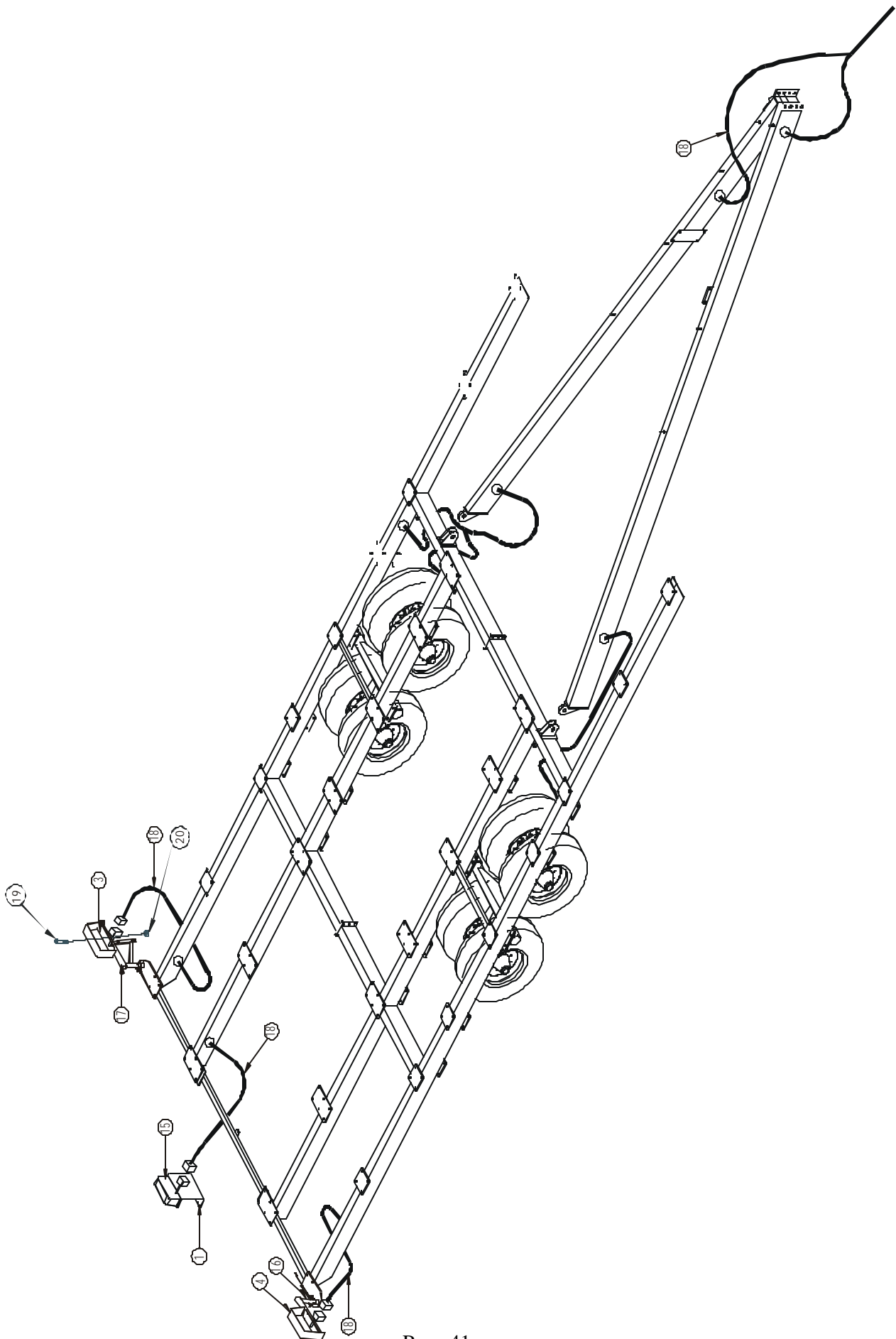
Items 30 includes Items 2, 11, 20, 21, 22, 25 and 28



3.11 Lighting Assembly (Part No. 40169)

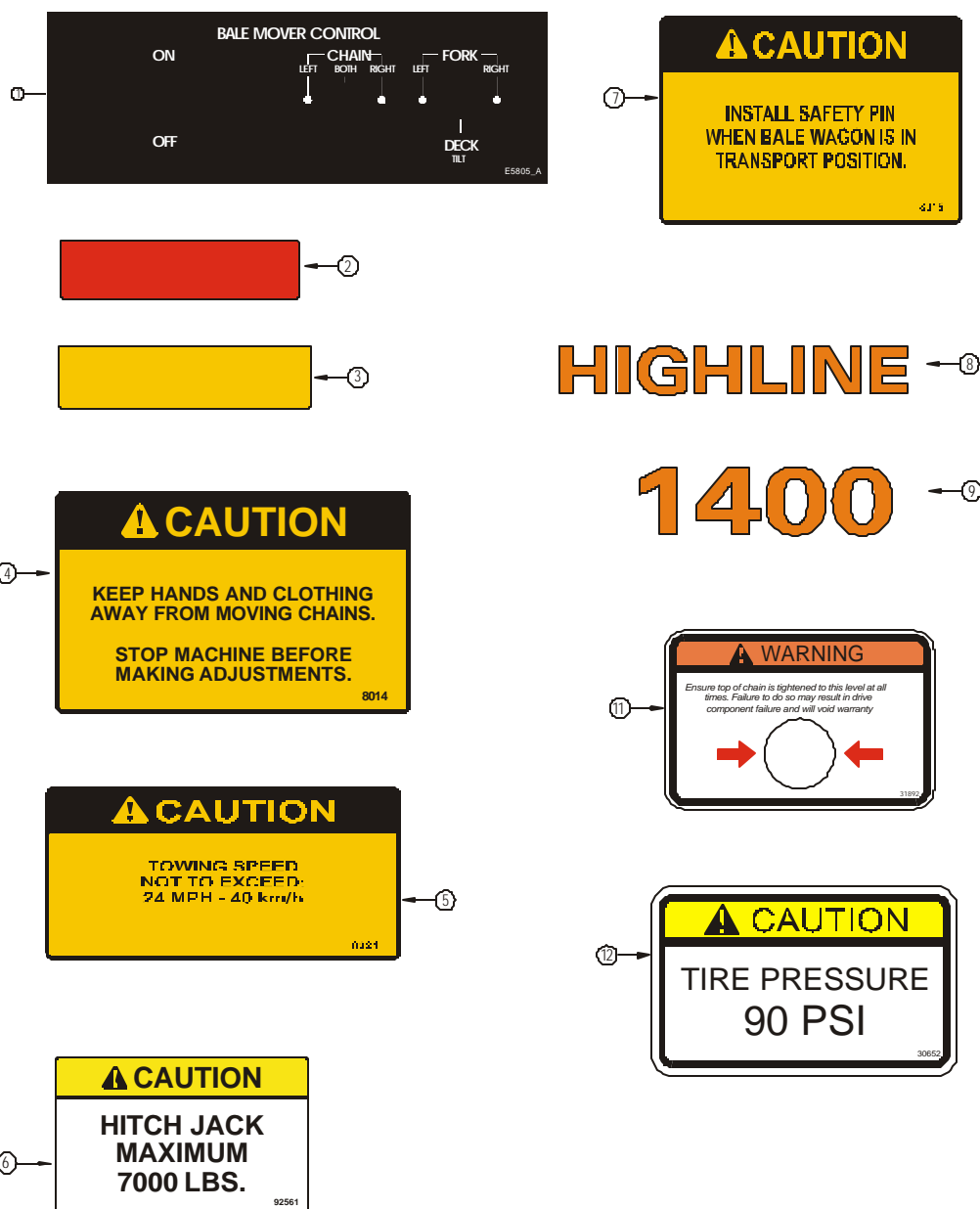
Item	Part No.	Description	Quantity
1	E4814	Bracket, Light, Middle	1
2	*30294	Screw, Tek, 1/4 x 1	3
3	30526	Light, Red & Amber, Left	1
4	30527	Light, Red & Amber, Right	1
5	*31033	Bolt, Hex, 1/4 X 3/4, UNC, Gr5, ZP	2
6	*31061	Bolt, U, Sq, 1/2-13, 3 X 7	4
7	*31173	Nut, Nylock, 1/2, UNC, ZP	8
8	*31174	Nut, Nylock, 1/4, UNC, ZP	18
9	*31535	Bolt, Hex, 1/4 X 1-1/2, UNC, Gr5, ZP	12
10	*31613	Tie, Cable, Nylon, Black, 11-1/2, 40	10
11	*31648	Grommet, Rubber, 1-3/8, 3/4, 1-1/16	10
12	*31649	Clamp, Cable, 1/2	2
13	*31650	Clamp, Cable, 3/4	1
14	*31663	Bolt, U, Sq, 1/4-20, 1/2 X 2-1/4	2
15	31664	Light, Dual, Red	1
16	45283	Assy, Mount, Light, BM, Right	1
17	45282	Assy, Mount, Light, BM, Left	1
18	40168	Elec, Harness, Lights	1
19	31581	1/4X1-1/4 Hex Bolt, UNC, Gr5	8
20	31174	1/4 Nylock Locknut, UNC, Gr5	8

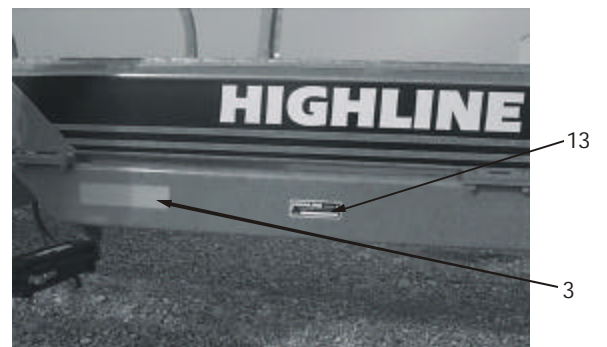
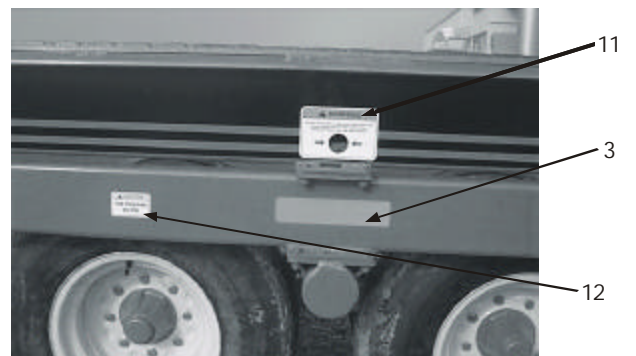
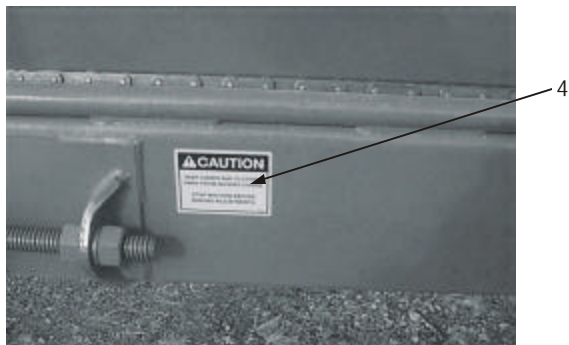
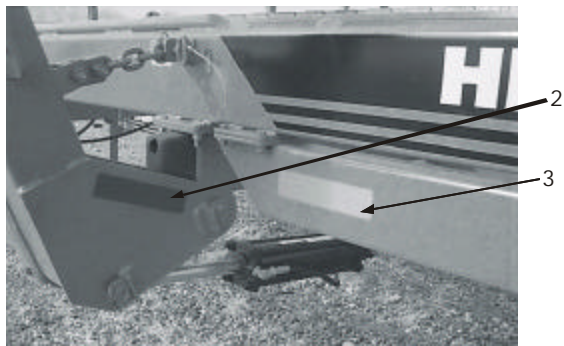
*Not Shown.



3.12 Decal Assembly (Part No. 45258)

Item	Part No.	Description	Quantity
1	E5805	Decal, Control box, Faceplate	1
2	30577	Decal, Red, Reflective, 2 x 9	2
3	30578	Decal, Amber, Reflective, 2 x 9	9
4	92556	Decal, Caution, #8014	2
5	92559	Decal, Caution, #8321	1
6	92561	Decal, Warning, Hitch, Jack, 7000 lbs	1
7	92563	Decal, Caution, #8015	2
8	92583	Decal, Highline, 3-1/2	4
9	92584	Decal, Highline, 1400	4
10	92586	Decal, Pin Striping	62 ft
11	31892	Decal, Warning, Tension, Chain	4
12	30652	Decal, Caution, Tires, 90 PSI	4
13	30208	Plt, Serial#	1

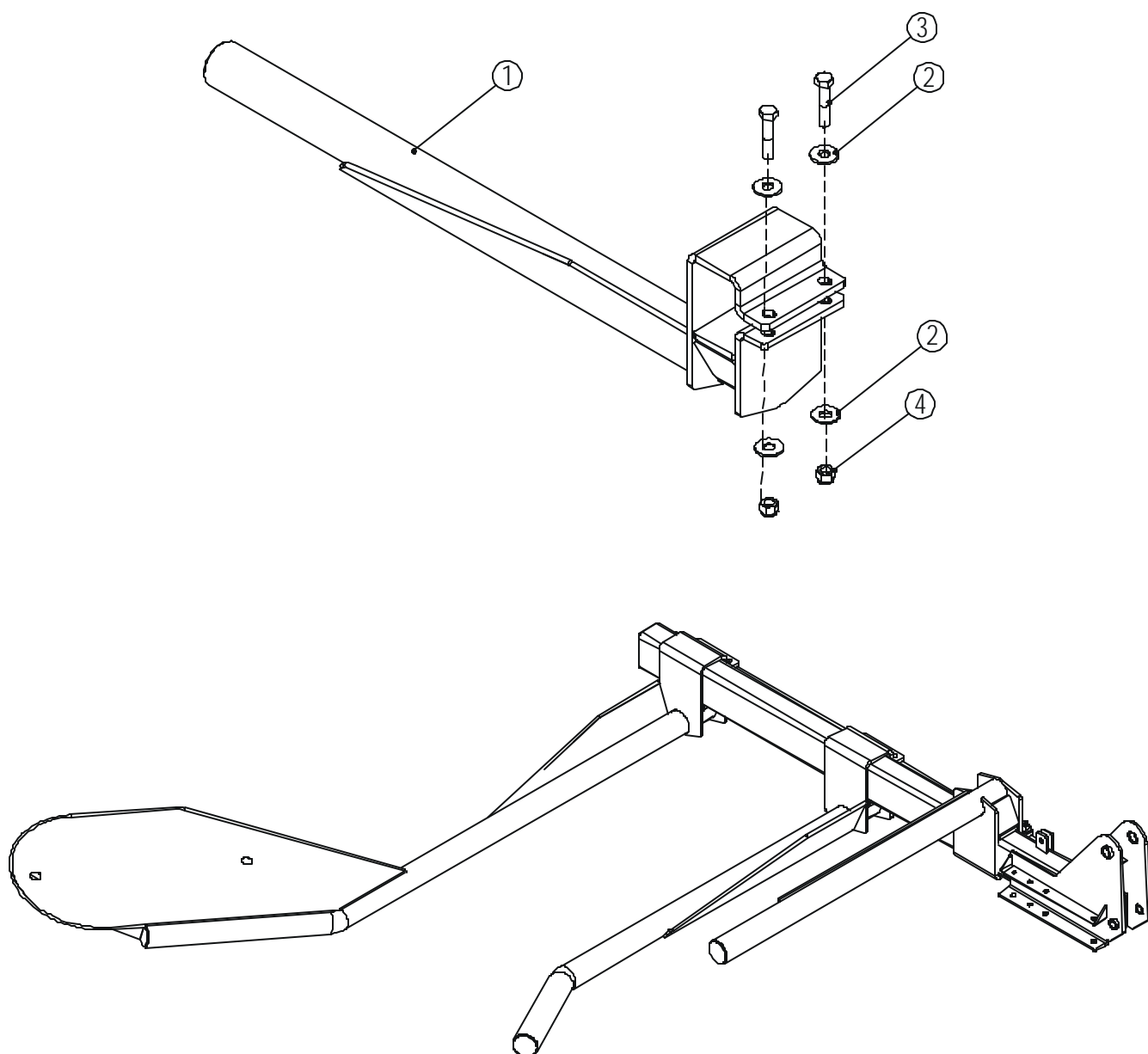




3.13 Short Fork Kit Option (Part No. 40178)

ITEM NO.	PART NO.	DESCRIPTION	QTY.
1	40177	FORK, SHORT	1
2	31238	WASHER, FLAT, 3/4, ZP	4
3	31340	BOLT, HEX, 3/4X3-1/2, UNC, GR5, ZP	2
4	31175	NUT, NYLOCK, 3/4, UNC, ZP	2

Note: Same assembly used for both right and left handed forks.



4.0 Parts Index

PartNum	DESCRIPTION	PAGE	ITEM
30100	Susp, Tire, 11Lx15FI, 12 Ply	15	2
30102	Hub, EM5500, 5000lbs, Complete	14	1
30104	Rim, 15 x 8, 1.5 Off, 8, Off-white	15	1
30106	Bolt, ½ x 1-½	16	4
30107	Bolt, ½ x 1-¾	16	5
30145	Fitting, Elbow, 10MB-8MJ90	28	2
30146	Hose, 1/2 x 33, 8FJX-8FJ90T, 1W	28	3
30147	Hose, 1/2 x 52, 8FJ90TL, 1W	28	4
30148	Hose, 1/2 x 72, 8FJX-8FJ90TL, 1W	28	5
30149	Hose, 1/2 x 108, 8FJX-8MP, 1W	28	6
30150	Fitting, Tee, 8FJXR-8MJT	28	7
30152	Fitting, Adapter, 8MB-8FJX	28	9
30197	Pin, Spring, 3/16 x 1-1/2	26	4
30200	Fitting, Plug, 8MB	32	3
30204	Fitting, Adapter, 10MB-8MJ	28	10
30206	Hose, Holder, ½	22	2
30207	Zerk, ¼ - 28, Straight	14	6
30207	Zerk, Grease, 1/4-28, Straight	15	11
30207	Zerk, Grease, 1/4-28, Straight	24	12
30207	Zerk, Grease, 1/4 -28, Straight	26	5
30208	Plt,Serial #	42	13
30209	Fitting, Pioneer, Male, 8FP	28	11
30209	Fitting, Pioneer, Male, 8FP	32	4
30210	Clamp, Hose, 1/2	32	5
30211	Fitting, Elbow, 8MB-8MJ90	32	6
30212	Fitting, Elbow, 8MP-8MJ90	32	1
30214	Fitting, Tee, 8MBR-8MJT	28	12
30215	Fitting, Adapter, 8MB-8MJ	32	7
30216	Fitting, Cross, 8MJ	32	8
30220	Susp,Cap,Dust	15	1
30221	Pin,Cotter,3/16x1-3/4	15	2
30222	Nut,Slotted,1,UNF	15	3
30223	Washer,Flat,1IDx2OD,.2385	15	4
30226	Drv,Brg,Race,Inner,1.781	15	5
30228	Drv,Brg,Seal,1.98	15	6
30229	Susp,Hub,EM5500,8Bolt	15	7
30236	Nut, Hex, 5/8, UNC, GR5, ZP	34	1
30236	Nut, Hex, 5/8, UNC, GR5, ZP	35	1
30237	Nut, Hex, 1, UNS, GR5	34	2
30237	Nut, Hex, 1, UNS, GR5	35	2
30238	Pin, Cotter, 3/16 x 1-1/2	34	3
30238	Pin, Cotter, 3/16 x 1-1/2	35	3
30239	Setscrew, Socket, 3/8 x 1/2 Knur	34	4
30240	Hyd, Fit, Plug, 1/2-14 NPTF, Dry	34	5
30240	Hyd, Fit, Plug, 1/2-14 NPTF, Dry	35	4
30242	Hyd, Cyl, Rod,1-1/2 x 17	35	6
30245	Hyd, Cyl, 3-1/2 x 13, H6203	35	7
30246	Hyd, Cyl, 3-1/2 x 16, H6206	34	7
30249	Hyd, Cyl, Tie rod, 5/8 x 16, H6678	34	8

30251	Hyd, Cyl, Piston, 3-1/2, H6688	34	9
30251	Hyd, Cyl, Piston, 3-1/2, H6688	35	8
30252	Hyd, Cyl, Tie Rod, 1-1/2 x 16	34	11
30253	Hyd, Cyl, Clevis, 1-1/4, 1 Pin	34	10
30255	Hyd, Cyl, Tie Rod, 5/8 x 13, Special	35	9
30258	Hyd, Cyl, Clevis, Cap, 3-1/2, NPTF	34	12
30258	Hyd, Cyl, Clevis, Cap, 3-1/2, NPTF	35	10
30259	Hyd, Cyl, Cap, Rod, 3-1/2 x 1-1/2	34	13
30259	Hyd, Cyl, Cap, Rod, 3-1/2 x 1-1/2, NPTF	35	11
30261	Lock, Thread, Nylock	34	14
30263	Hyd, Cyl, Seal kit, 3-1/2	34	15
30263	Hyd, Cyl, Seal Kit, 3-1/2	35	12
30269	Bolt, U, Square, 5/8 x 6 x 4-1/2	24	23
30294	Screw, Tek, 1/4 x 1	40	2
30313	Fitting, Tee, 8MJ-8MJ-8MJ	28	8
30526	Light, Red & Amber, Left	40	3
30527	Light, Red & Amber, Right	40	4
30559	Clamp, Rope, Wire, 1/16	22	19
30577	Decal, Red, Reflective, 2 x 9	42	2
30578	Decal, Amber, Reflective, 2 x 9	42	3
30580	Fitting, Elbow, 8MP-6MJ90	32	26
30581	Fitting, Adapter, 6FJX-6MB	32	31
30582	Hose, 3/8 x 14.5, 8FJX-6FJX, 1W	32	30
30583	Hose, 3/8 x 30, 8FJ90TL, 180	32	12
30651	Roller, Chain, 3 OD x 1-1/4 ID	26	8
30652	Decal,Caution,Tires,90PSI	42	12
31016	Bolt, Hex, 1/2 x 1-1/2	20	10
31016	Bolt, Hex, 1/2 x 1-1/2	22	7
31016	Bolt, Hex, 1/2 x 1-1/2	24	24
31029	Bolt, Hex, 1/4 x 1	28	28
31033	Bolt, Hex, 1/4x3/4, UNC, GR5, ZP	22	9
31033	Bolt, Hex, 1/4 X 3/4, UNC, Gr5, ZP	40	5
31038	Bolt, Hex, 1 x 7-1/2	18	7
31041	Bolt, Hex, 3/4 x 3	24	15
31043	Bolt, Hex, 3/8 x 1, UNC, Gr5, ZP	32	22
31051	Bolt, Hex, 5/8 x 1-1/2	24	17
31052	Bolt, Hex, 5/8 x 2	20	13
31053	Bolt, Hex, 5/8 x 1-3/4	18	8
31061	Bolt, U, Square, 1/2 x 3 x 7	22	1
31061	Bolt, U, Sq, 1/2-13, 3 X 7	40	6
31070	Bolt, Hex, 1/2 x 2	24	26
31159	Nut, Acme, 1", 5tpi, RH	26	10
31162	Nut, Hex, 1	18	9
31162	Nut,Hex,1,UNC,GR5,ZP	18	14
31173	Nut, Nylock, 1/2	16	6
31173	Nut, Nylock, 1/2	20	11
31173	Nut, Nylock, 1/2	22	10
31173	Nut, Nylock, 1/2	24	27
31173	Nut, Nylock, 1/2	28	19
31173	Nut, Nylock, 1/2, UNC, ZP	40	7
31174	Nut, Nylock, 1/4	22	11
31174	Nut, Nylock, 1/4	28	20
31174	Nut, Nylock, 1/4, UNC, ZP	40	8

31174	1/4 Nylock Locknut, UNC, Gr5	40	20
31174	Nut, Nylock, 3/4, UNC, ZP	44	4
31175	Nut, Nylock, 3/4	24	18
31176	Nut, Nylock, 3/8, UNC, ZP	32	23
31177	Nut, Nylock, 5/16, UNC, ZP	32	24
31178	Nut, Nylock, 5/8	18	10
31178	Nut, Nylock, 5/8	20	14
31178	Nut, Nylock, 5/8	24	19
31182	Cotterpin, 1/4 x 2-1/2	18	11
31182	Pin, Cotter, 1/4 x 2-1/2	24	20
31218	Washer, Lock, 5/8, ZP	28	30
31235	1" Flat Washer	18	16
31236	Washer, Flat, 1/2	22	12
31236	Washer, Flat, 1/2, ZP	28	21
31237	Washer, Flat, 1/4, ZP	28	23
31238	Washer, Flat, 3/4, ZP	24	28
31238	Washer, Flat, 3/4, ZP	44	2
31239	Washer, Flat, 5/16, UNC, ZP	32	25
31240	Washer, Flat, 5/8, ZP	28	22
31243	Washer, Lock, 1", ZP	18	12
31243	Washer, Lock, 1", ZP	18	13
31243	Washer, Lock, 1", ZP	26	11
31271	Valve, Check, Pilot	32	28
31336	Bolt, Hex, 5/8 x 3, UNC, GR5, ZP	24	16
31340	Bolt, Hex, 3/4x3-1/2, UNC, GR5, ZP	44	3
31442	Pin, Hitch, 3/8x3	22	17
31471	1"x3" Hex Bolt, UNC, GR5	18	15
31535	Bolt, Hex, 1/4 X 1-1/2, UNC, Gr5, ZP	40	9
31545	Bolt, Hex, 5/8 x 1, UNF, GR5, ZP	28	24
31580	Bolt, Carr, 1/4 x 2-1/2, UNC, GR5, ZP	28	18
31581	1/4x1-1/4 Hex Bolt, UNC, Gr5	40	19
31590	Chain,Safety,ASAE, 10100LB, 5'4"	18	17
31593	Clip, Automotive, 1/4	28	29
31613	Tie, Cable, Nylon, Black, 11-1/2, 40	40	10
31648	Grommet, Rubber, 1-3/8, 3/4, 1-1/16	40	11
31649	Clamp, Cable, 1/2	40	12
31650	Clamp, Cable, 3/4	40	13
31663	Bolt, U, Square, 1/4 x 1-1/2 x 2-1/4	22	8
31663	Bolt, U, Sq, 1/4-20, 1/2 X 2-1/4	40	14
31664	Light, Dual, Red	40	15
31795	Wheel, Complete, Off-white	14	7
31797	Bolt, Socket, 1/2 x 2-3/4, UNC, Gr5	28	17
31892	Decal, Warning, Tension, Chain	42	11
31933	Jack, Sidewind, 7000lb x 15	18	6
32035	Fitting, Tee, 8MPR-8MJ	32	27
32056	Fitting, Elbow, 4MB-6MJ90	32	32
32071	Washer, Motor, 1-1/4 x 1-7/8	28	13
32079	Fitting, Elbow, 6MB-8MJ90	32	29
32250	Hyd, Cyl, Pin, 1	34	6
32250	Hyd, Cyl, Pin, 1	35	5
32639	Bearing, Thrust, Front	30	13
32647	Hyd, Motor,Seal Kit, Roller, Stator	30	1

32649	Bearing, Housing, Rear, ½"	30	4
32651	Bearing, Thrust, Rear	30	2
32720	Bearing, Housing, Front	30	3
32721	Kit, Rotor	30	5
32722	Kit,Link,Drive	30	6
32723	Kit, Housing	30	7
32724	Kit, Shaft	30	8
32725	Kit, Manifold	30	9
32726	Plate, Balance	30	10
32727	Cover,End	30	11
32728	Kit, Bolt	30	12
33014	Susp, Tube, 11L-15	15	4
40003	Pin, Hitch	18	1
40006	Subframe, Rear	20	1
40008	Pin, Arm, Pivot	24	1
40010	Pin, Arm, Side, Pivot	24	2
40019	Pin, Transport	24	7
40062	Hitch, A-Frame, Left	18	2
40063	Hitch, A-Frame, Right	18	3
40088	Bumper, Bale	24	21
40105	Crossmember, Sign, Slow Moving	16	3
40115	Tightner, Motor, Left	26	1
40116	Tightner, Motor, Right	26	2
40118	Mount, Bumper, Bale	24	22
40121	Pin, Sprocket, Rear	26	3
40140	Bracket, Cylinder	20	12
40142	Hitch, Tongue, Double	18	5
40143	Subframe, Middle	20	3
40144	Rail, Outside, Left	20	5
40145	Rail, Inside, Left	20	6
40146	Rail, Outside, Right	20	7
40147	Rail, Inside, Right	20	8
40148	Arm, Slide, Pivot, Left	24	5
40149	Arm, Slide, Pivot, Right	24	6
40151	Fork, Right	24	8
40152	Fork, Left, ¼ Turn	24	9
40153	Fork, Right, ¼ Turn	24	10
40154	Fork, Left	24	11
40168	Elec, Harness, Lights	40	18
40177	Fork, Short	44	1
40486	Tube, Deck, Cylinder	20	4
40487	Hitch, Crossmember	18	4
45235	Subframe, Front	20	2
45236	Arm, Pivot, Right	24	4
45237	Arm, Pivot, Left	24	3
45242	Axle	14	3
45243	Pocket, End, Axle	14	2
45245	Subframe, Main, Right	16	2
45246	Subframe, Main, Left	16	1
45278	Mount, Light, BM, Left	22	15
45279	Mount, Light, BM, Right	22	20
45280	Mount, Brkt, Light, BM, LT	22	16
45281	Mount, Brkt, Light, BM, RT	22	21

45282	Assy,Mount, Light, BM, Left	22	13
45282	Assy,Mount, Light, BM, Left	40	17
45283	Assy,Mount, Right, BM, Right	22	14
45283	Assy,Mount, Right, BM, Right	40	16
90103	Cylinder, 3.5 x 16, 1.5, 8FP	32	9
90120	Cylinder, 3.5 x 13, 1.5, 8FP	32	10
90138	Wiring,Box,Control,14BM	37	15
90138	Wiring,Box,Control,14BM	38	30
90223	Hose, 3/8 x 58, 8MJ-8MP, 1W	32	11
90243	Hose, 3/8 x 44, 8FJX-8MJ, 1W	32	13
90245	Hose, 3/8 x 28, 8FJX-8MJ, 1W	32	14
90271	Hose, 3/8 x 42, 8FJX-8FJX, 1W	32	15
90313	Hose, 3/8 x 18, 8FJX-8FJX, 1W	32	2
90421	Line, Steel, 1/2 x 0.049, 8FJ	32	16
90422	Line, Steel, 1/2 x 0.049, 8FJ	32	17
90423	Line, Steel, 1/2 x 0.049, 8FJ	32	18
90424	Line, Steel, 1/2 x 0.049, 8FJ	32	19
90425	Line, Steel, 1/2 x 0.049, 8FJ	32	20
91048	Susp, Stem, Valve, TR801HP	15	3
91061	Bolt, Wheel, 9/16	14	5
91111	Drv,Brg,Tapered,Outer,1.375	15	8
91131	Drv,Brg,Race,Outer,1.375	15	9
91133	Drv,Brg,Tapered,Inner,1.781	15	10
91508	Chain, C2062H x 304PI	26	6
91510	Chain, Connector, C2062H	26	7
91511	Link, Connecting, Half, C2062	26	13
91517	Chain, Length, C2064H	26	12
91608	Pin, Hair, 1/8 x 2-9/16	24	14
91704	Zerk, 1/4 - 28, 90°	14	4
92024	Bushing	26	9
92028	Sign, Slow Moving	22	3
92061	Bumper, Rubber	22	4
92063	Drv,Sprocket,2062,10 Tooth,1-1/4	28	14
92070	Valve, Solenoid	28	16
92070	Valve, Solenoid	36	1
92077	Harness, Extension	36	2
92089	Valve, Solenoid	32	21
92089	Valve, Solenoid	36	3
92104	Connector, 7-Pin, Male	37	1
92106	Connector, 7-Pin, Female	37	2
92106	Connector, 7-Pin, Female	38	2
92107	Switch, Rocker, On/Off	37	3
92107	Switch, Rocker	38	3
92108	Switch, Toggle	37	4
92108	Switch, Toggle	38	4
92119	Screw, Thumb	38	5
92125	Box, Control	36	4
92130	Relay, 12V, 30A	38	6
92138	Holder, Bus, Body	37	5
92138	Holder, Bus, Body	38	7
92139	Holder, Bus, Cap	37	6
92139	Holder, Bus, Cap	38	8

92140	Fuse, Bus, 12V20A, Fast	37	7
92140	Fuse, Bus, 12V20A, Fast	38	9
92141	Bushing, Relief	38	10
92143	Wire, Corrugated, 1/2	38	11
92146	Enclosure, Plastic	37	8
92149	Wire, 16, Black, Strand	38	13
92150	Wire, 16, White, Strand	38	14
92151	Wire, 16, Red Strand	38	15
92152	Wire, 16, Orange, Strand	38	16
92153	Wire, 16, Green, Strand	38	17
92154	Wire, 16, Yellow, Strand	38	18
92155	Wire, 16, Brown, Strand	38	19
92156	Cables, 2C – 16GA	38	20
92157	Pin, Male	37	9
92158	Pin, Female	37	10
92158	Connector, Socket, Female	38	21
92161	Wedge, Male	37	11
92162	Wedge, Female	37	12
92162	Connector, Wedge, Female	38	22
92163	Diode, 12V, 20A	38	23
92164	Screw, Tapping, #4 x 1/4	37	13
92165	Connector, QD, Female, 3/16	38	24
92166	Connector, Ring, 3/8, 16GA	38	25
92167	Connector, QD, Female, 1/4	38	26
92168	Connector, ADP, F/M/M, 1/4	38	27
92169	Connector, QD, Female, 1/4	38	28
92170	Tie, Cable, 4, Black	38	29
92184	Motor, Hydraulic, 45 cu.in., 2000psi	28	15
92220	Aluminum, Plate, Box, Control	37	14
92556	Decal, Caution	42	4
92559	Decal, Caution	42	5
92561	Decal, Warning, Hitch, Jack	42	6
92563	Decal, Caution	42	7
92583	Decal, Highline, 3-1/2	42	8
92584	Decal, Highline, 1400	42	9
92586	Decal, Pin striping	42	10
E3764	Tether, Cable, Shield, Small	24	25
E4740	Bracket, Solenoid, Hyd	20	9
E4740	Bracket, Solenoid	28	1
E4751	Bracket, Box, Control	38	1
E4779	Tube, Divider, Bale	22	6
E4802	Housing, Guard, BM, Left	28	25
E4803	Plate, Face, Guard	28	26
E4810	Housing, Guard, BM, Right	28	27
E4814	Bracket, Light, Middle	22	5
E4814	Bracket, Light, Middle	40	1
E5351	Tether, 16"	22	18
E5652	Lug, Extension	24	29
E5653	Chain, Link, 1/2, GR40, 5 Links	24	13
E5805	Decal, Box, Control	38	12
E5805	Decal, Control box, Faceplate	42	1

5.0 Specifications

<i>Weight</i>	<i>Approximately 9,700 lbs (4,400 kg)</i>
<i>Hitch Weight (empty)</i>	<i>1740 lbs (789 kg)</i>
<i>Total Length</i>	<i>43'5"</i>
<i>Bed Length</i>	<i>37"</i>
<i>Total Width</i>	<i>16'9"</i>
<i>Bed Width</i>	<i>11'2"</i>
<i>Total Height</i>	<i>9'2"</i>
<i>Bed Height</i>	<i>3'3"</i>
<i>Ground Clearance</i>	<i>13-1/2"</i>
<i>Maximum Capacity</i>	<i>Fourteen - 2,200 lb Bales to Max. 30,800 lb payload</i>
<i>Chain & Sprocket</i>	<i>Heavy Duty ASA 2062, 1-1/2 Pitch</i>
<i>Tires</i>	<i>Goodyear, 11L-15F1, F Ply Farm Highway Service</i>
<i>Undercarriage</i>	<i>Two – 4 wheel oscillating tandems</i>
<i>Horsepower Required</i>	<i>100 hp</i>
<i>Hydraulic Outlets</i>	<i>Two</i>
<i>Hydraulic Pressure</i>	<i>2,500 psi. (17,240 KPa)</i>

Dealer Information

Dealer: _____

Address: _____

City: _____

Province / State: _____

Postal Code / Zip Code: _____

Phone: _____

Identification Numbers

Model Number: _____

Serial Number: _____

Dealer Checklist

Bale Mover Dealer Checklist

Pre-Assembled Units	Packaged Units	Check List Item
		Install chains on machine, with hydraulic motors.
		Ensure roller chains are running straight down the center of the
		channel to prevent jumping of the chains.
		Check for chain clearance between the rear sprocket and the slide plate.
		Install SMV sign.
		Tail/warning lights installed.
		Install tethered loader fork transport lock pin shipped w/machine.
		Ensure all grease points are lubricated.
		Check tire pressure and adjust as required. (as specified on tire)
		Install deck cylinder.
		Install right and left hydraulic motor guards with plate guards.
		Install right and left chain tightners.
		Install hitches, Hitch crossmember, and Hitch tongue.
		Install rear sprockets, with rear pin assembly.
		Install rubber bumpers.
		Check or Tighten roller chain to specified tension.
		Install castor wheel, pivot arm assemblies (5 and 7 BM)
		Install Jack.
		Full library of manuals (operators, and parts) shipped w/machine.
		Mini operators manual w/tether cable shipped w/machine.
		Verify serial plate is attached
		Check tire hubs for proper bearing adjustment.
		Hook up to tractor and check all functions - cylinders, motors, lights.

Check the Shaded areas only.