

Installation of Non-Contact Rotary Sensors

FaStack 1200 / FaStack 1800



Shut down the tractor and remove the key before repairing, servicing, lubricating or cleaning the machine.

Relieve all hydraulic pressure in the hoses. Disconnect the hydraulic hoses from the tractor before going near the machine.

Securely block the machine to avoid any movement while doing the work.



Note: The kit includes extra parts not used for all applications.

Front Table Lift Sensor

Follow *Figure 1* and *Table 1* throughout this section.

1. Install the sensor magnet (7) to the sensor adaptor (8).
 - a. Ensure that the 0° hole is aligned opposite to the set screw location.
2. Install the sensor adapter (8) onto the shaft and align key way. Secure with the set screw (1).
3. Install the sensor (7) onto the 5/4" sensor mount (10).

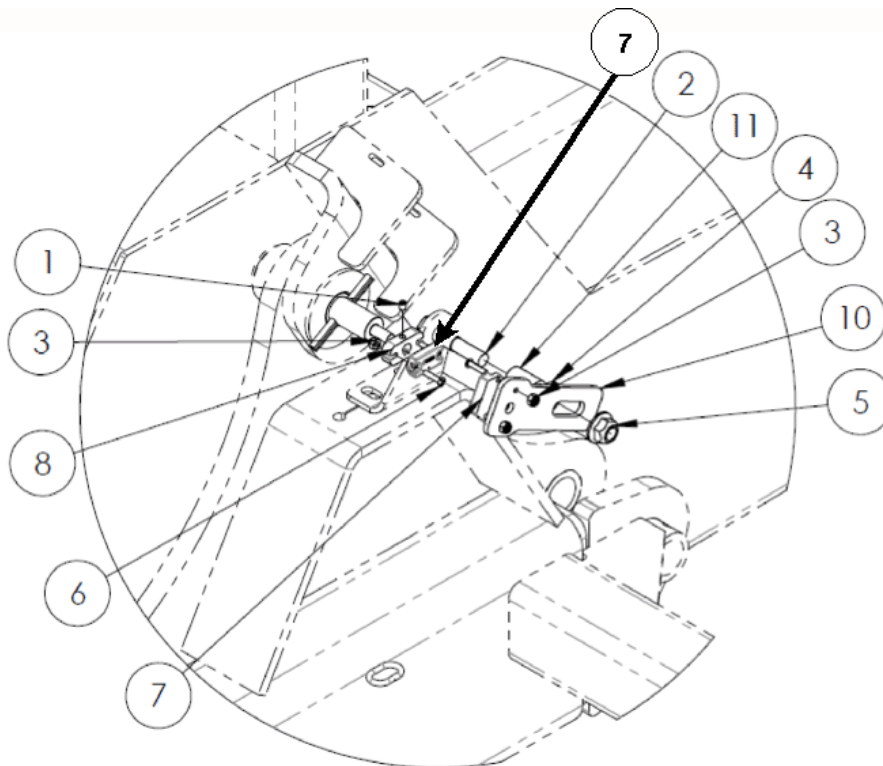


Figure 1: Install front table lift sensor

48351_A1C

Installation of Non-Contact Rotary Sensors

FaStack 1200 / FaStack 1800

4. Bolt the sensor mount (10) loosely onto the mount on the machine using a spacer (11) and washer (4).
5. Align the sensor (7) to the magnet (7), leaving 0.1" (2.5mm) or less with air gap and secure.
6. Plug the sensor into existing wiring and secure excess, leaving enough slack to allow rotation.

ITEM	DESCRIPTION
1	SCREW,SET,1/4X1/4,CUPPOINTG,UNC
2	BOLT,HEX,1/2X2-1/4,UNC,GR5,ZP
3	NUT,NYLOCK,#8,UNC,ZP
4	WASHER,FLAT,SAE,1/2,ZP
5	NUT,FLG,LOCK,1/2,UNC,GR5,ZP
6	SCREW,MACH,#8-32X3/4,ZP
7	SNSR,RTRY,360,0.5-4.5,5V,PIHER
8	PC,SENSOR MNT,SET SCREW
10	PC,SENSOR MOUNT,5.25
11	PIPE,SPACER,0.75X1.125

Table 1: Parts list for front table lift sensor

7. To calibrate the new sensor, see the Auto Calibration Procedure in your operators manual.
 - a. Note: Before starting the calibration, connect the tractor to the implement and enable hydraulic flow.
 - b. Note: If after the calibration is complete the 'lowered' value is higher than the 'raised' value, the sensor has been installed backwards and needs to be flipped around. After fixing, repeat the calibration procedure.

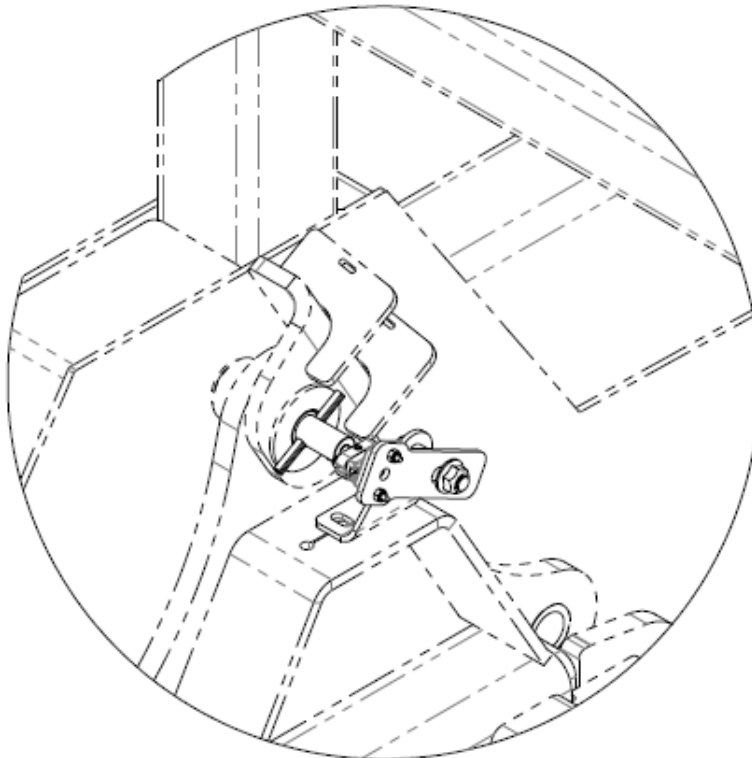


Figure 2: Assembled front table mount

48351_A3

Installation of Non-Contact Rotary Sensors

FaStack 1200 / FaStack 1800

Arm Sensor

Follow **Figure 3** and **Table 2** throughout this section.

1. Install the sensor magnet (7) to the sensor adaptor (8).
 - a. Ensure that the 0° hole is in line with the set screw location.
2. Install the sensor adapter (8) onto the shaft and align key way. Secure with the set screw (1).
3. Install the sensor (7) onto the 6¼" sensor mount (9).
4. Bolt the sensor mount (9) loosely onto the mount on the machine using a spacer (11) and washer (4).

ITEM	DESCRIPTION
1	SCREW,SET,1/4X1/4,CUPPOINTG,UNC
2	BOLT,HEX,1/2X2-1/4,UNC,GR5,ZP
3	NUT,NYLOCK,#8,UNC,ZP
4	WASHER,FLAT,SAE,1/2,ZP
5	NUT,FLG,LOCK,1/2,UNC,GR5,ZP
6	SCREW,MACH,#8-32X3/4,ZP
7	SNSR,RTRY,360,0.5-4.5,5V,PIHER
8	PC,SENSOR MNT,SET SCREW
9	PC, SENSOR MOUNT,6.25
11	PIPE,SPACER,0.75X1.125

Table 2: Parts list for arm sensor

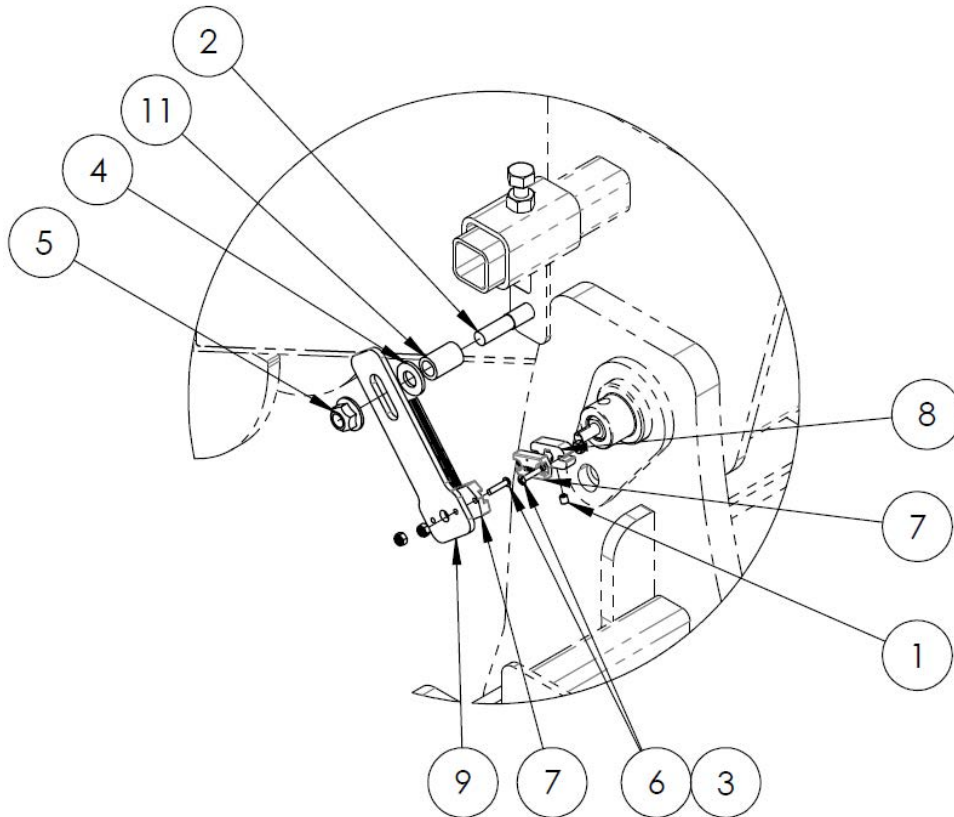


Figure 3: Install arm sensor

48351_A2

Installation of Non-Contact Rotary Sensors

FaStack 1200 / FaStack 1800

5. Align the sensor (7) to the magnet (7), leaving 0.1" (2.5mm) or less with air gap and secure.
6. Plug the sensor into existing wiring and secure excess, leaving enough slack to allow rotation.
7. To calibrate the new sensor, see the Auto Calibration Procedure in your operators manual.
 - a. Note: Before starting the calibration, connect the tractor to the implement and enable hydraulic flow.
 - b. Note: If after the calibration is complete the 'lowered' value is higher than the 'raised' value, the sensor has been installed backwards and needs to be flipped around. After fixing, repeat the calibration procedure.

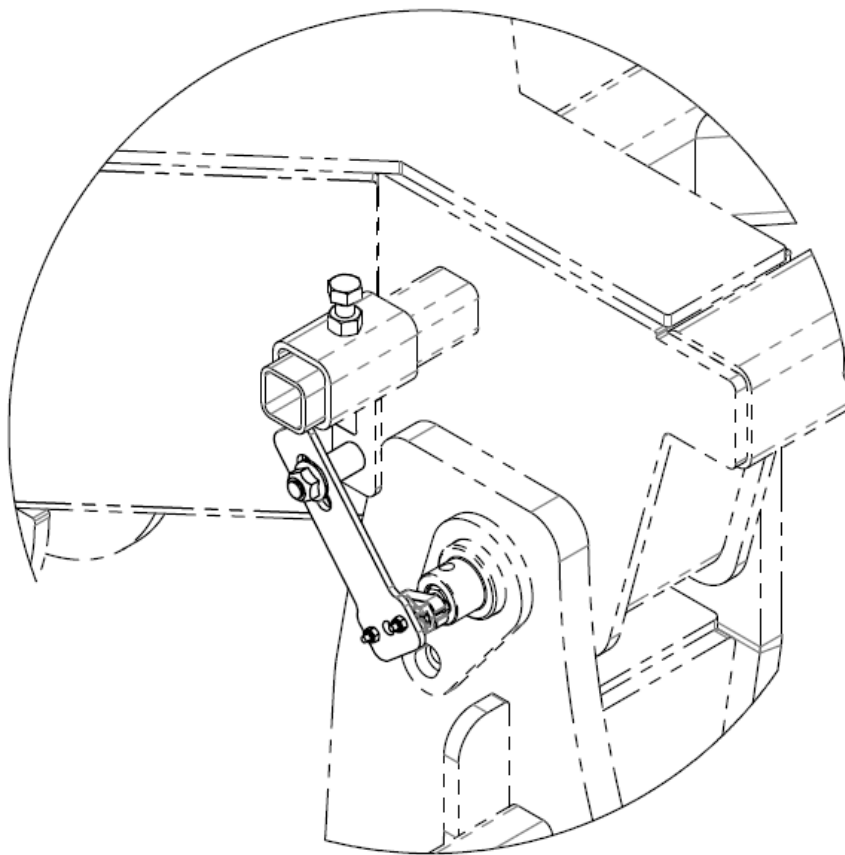


Figure 4: Assembled arm mount

48351_A4

Installation of Non-Contact Rotary Sensors

FaStack 1200 / FaStack 1800

Rear Table Sensor

Follow [Figure 5](#) and [Table 3](#) throughout this section.

1. Install the sensor magnet (7) to the sensor adaptor (8).
 - a. Ensure that the 0° hole aligned with the set screw location.
2. Install the sensor adapter (8) onto the shaft and align key way. Secure with the set screw (1).
3. Install the sensor (7) onto the 6¼" sensor mount (9).
4. Bolt the sensor mount (9) loosely onto the mount on the machine using existing hardware.

ITEM	DESCRIPTION
1	SCREW,SET,1/4X1/4,CUPPOINTG,UNC
3	NUT,NYLOCK,#8,UNC,ZP
6	SCREW,MACH,#8-32X3/4,ZP
7	SNSR,RTRY,360,0.5-4.5,5V,PIHER
8	PC,SENSOR MNT,SET SCREW
9	PC, SENSOR MOUNT,6.25

Table 3: Parts list for rear table sensor

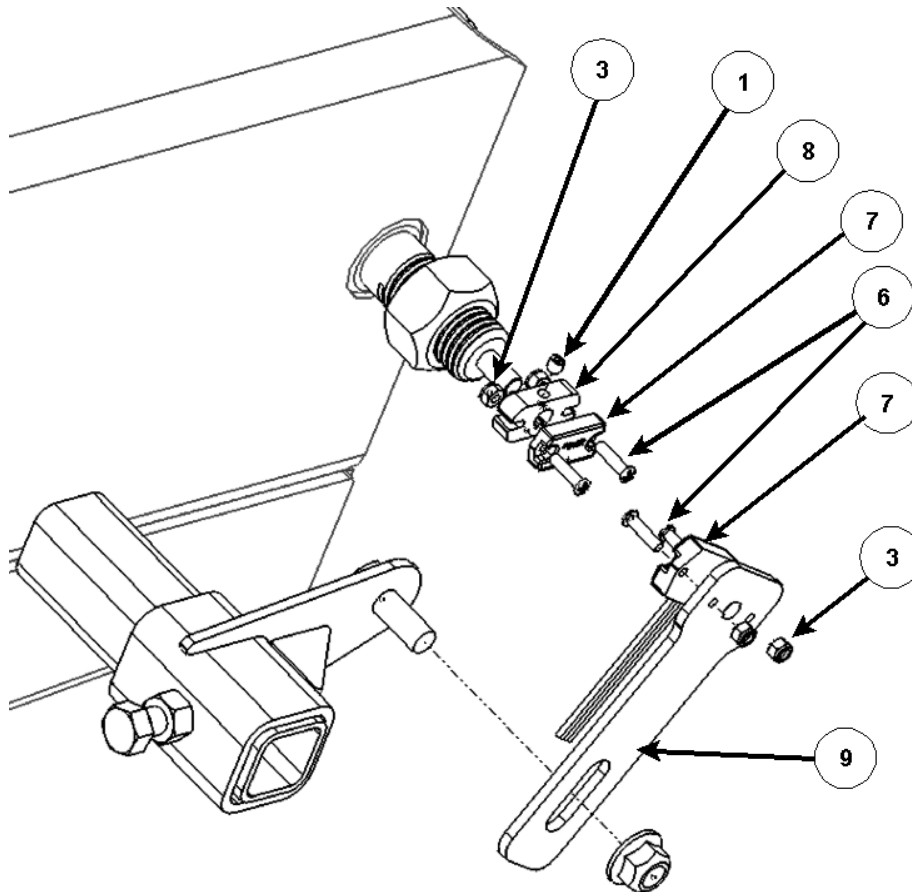


Figure 5: Install rear table sensor

225059C

Installation of Non-Contact Rotary Sensors

FaStack 1200 / FaStack 1800

5. Align the sensor (7) to the magnet (7), leaving 0.1" (2.5mm) or less with air gap and secure.
6. Plug the sensor into existing wiring and secure excess.
7. To calibrate the new sensor, see the Auto Calibration Procedure in your operators manual.
 - a. Note: Before starting the calibration, connect the tractor to the implement and enable hydraulic flow.
 - b. Note: If after the calibration is complete the 'lowered' value is higher than the 'raised' value, the sensor has been installed backwards and needs to be flipped around. After fixing, repeat the calibration procedure.

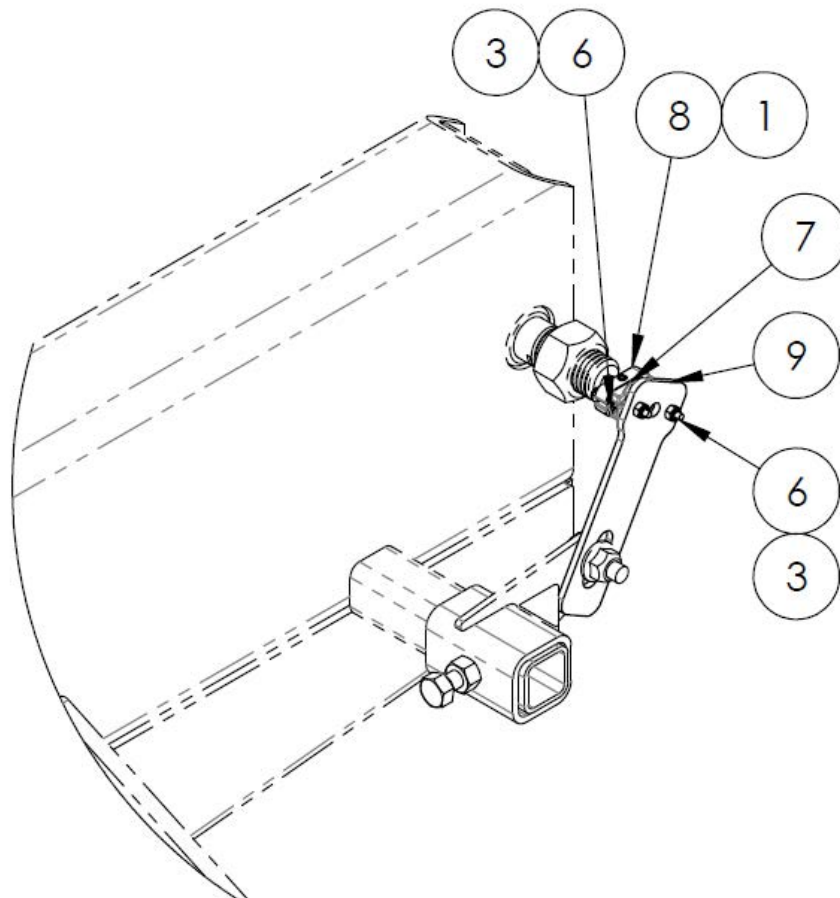


Figure 6: Assembled rear table

48351_A5