

Installation of the Hay Ring - AMX520T



Shut down the tractor and remove the key before repairing, servicing, lubricating or cleaning the machine.

Relieve all hydraulic pressure in the hoses. Disconnect the hydraulic hoses from the tractor before going near the machine.

Securely block the machine to avoid any movement while doing the work.



Remove

1. Remove any items that are bolted to the top ring of the tub.
 - a. These items can be installed again later.
2. If the tub extension is installed, it will need to be removed prior to the installation of the hay ring.
 - a. Remove all of the bolts, washers and nuts (1,2,3,4) from the 2 straight pieces on the tub extension belting (5), and remove; see *Figure 1*.
 - b. Remove all of the remaining bolts, washers and nuts (1,2,4) from the tub extension belting (6), and remove; see *Figure 1*.

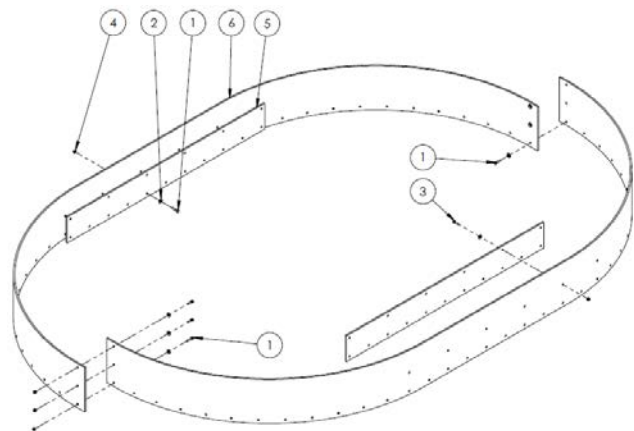


Figure 1: Fasteners for the Tub Extension

47717_B1

Install

1. Place one of the curved pieces of the hay ring (4) onto the top tub ring; see *Figure 2*.
2. Align the support legs of the curved piece of the ring with the holes in the curved tub top ring.
3. Place a 1/2" flat washer (2) over a 1/2" x 1-1/2" hex bolt (1); see *Figure 2*.
4. Place the bolt/washers up through the hole in the tub top ring and into the support leg of the hay ring.

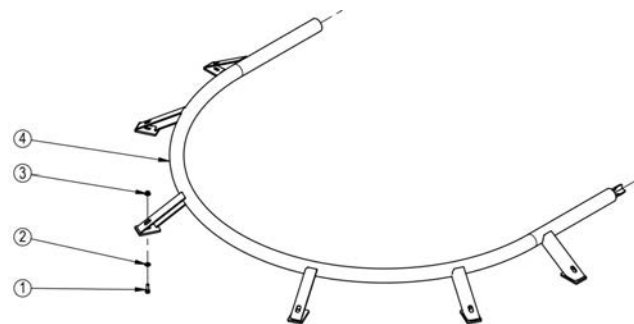


Figure 2: Fasteners for the Hay Ring

48217_A1

Installation of the Hay Ring - AMX520T

5. Place a ½" flange locknut (3) onto the bolt;
see *Figure 2*.
 - a. Do not fully tighten at this time to allow for adjusting as the other pieces are installed.
6. On the remaining curved piece (1 or 2) of the hay ring, slide the tube ends over the splice that is on the other curved piece (2 or 1) of the hay ring; see *Figure 3*.
7. Align the support legs of the curved piece of the ring with the holes in the curved tub top ring.
8. Place a ½" flat washer (2) over a ½" x 1-1/2" hex bolt (1); see *Figure 2*.
9. Place the bolt/washers up through the hole in the bottom of the tub top ring and into the support leg of hay ring.
10. Place a ½" flange locknut (3) onto the bolt;
see *Figure 2*.
 - a. Do not fully tighten at this time to allow for adjusting as the other pieces are installed.
11. Adjust the pieces so they are fitting tightly together and aligning with the holes.
12. Tighten all the fasteners holding the hay ring to the tub.
13. If there were items attached to the tub top ring that were taken off, re-install at this time.

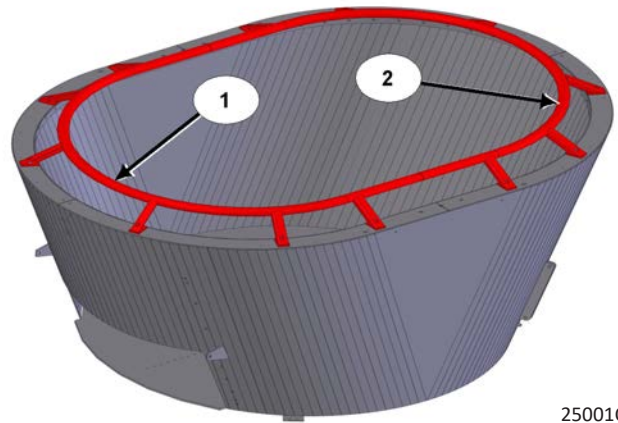


Figure 3: Join the Remaining Curved Piece of the Hay Ring

25001C