



Shut down the tractor and remove the key before repairing, servicing, lubricating or cleaning the machine.

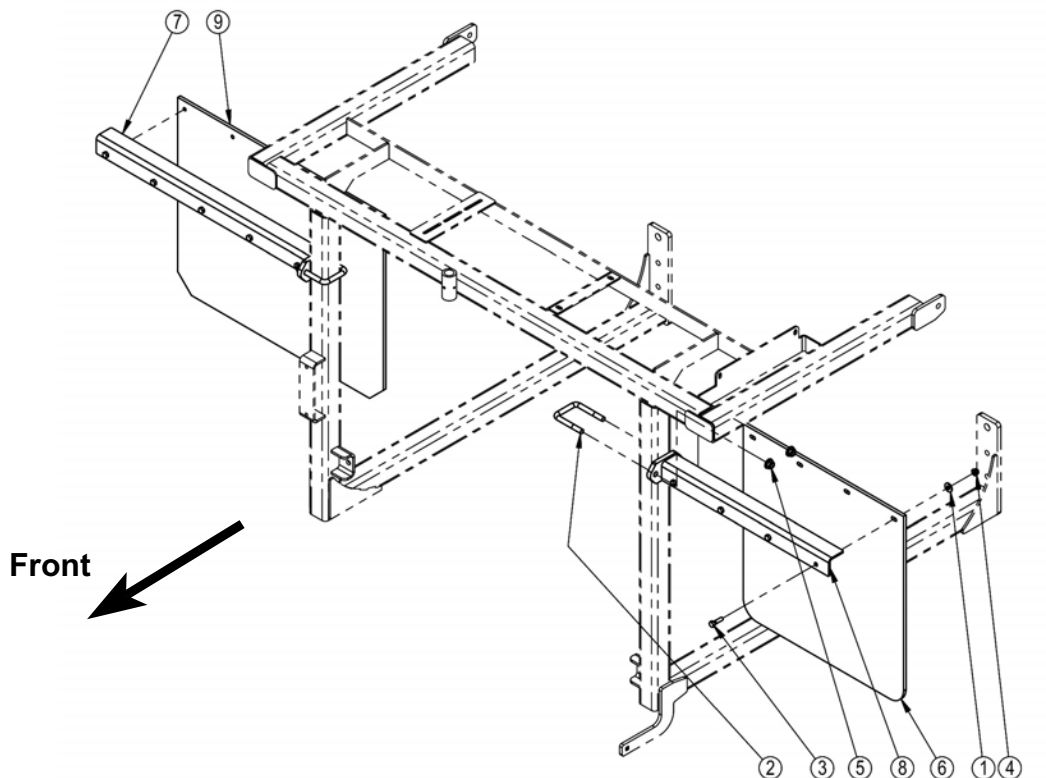
Relieve all hydraulic pressure in the hoses. Disconnect the hydraulic hoses from the tractor before going near the machine.

Securely block the machine to avoid any movement while doing the work.



1. On the right side, install the mud flap support bracket that has 5 flap mount holes (9) to the platform.

- Install with the flap mount holes to the bottom.
- Fasten the support bracket (7) with a  $1/2$ " x  $2-5/8$ " x  $3-3/4$ " square u-bolt (2) and flange locknuts (5).
- Leave the u-bolt loose for adjustment later.



Install the Mud Flap Brackets and Flaps

47096\_A

## ***Installation of the Mud Shields on Towed TMR Mixers***

ITEM	DESCRIPTION
1	WASHER,FLAT,3/8,ZP
2	BOLT,U,SQ,1/2-13,2-5/8X3-3/4,1-1/4
3	BOLT,HEX,3/8X1-1/4,UNC,GR5,ZP
4	NUT,FLG,LOCK,3/8,UNC,GR5,ZP
5	NUT,FLG,LOCK,1/2,UNC,GR5,ZP
6	MUD FLAP,RUBBER,24X24
7	MUD GUARD BRACKET
8	MUD GUARD BRACKET
9	MUD FLAP,RUBBER,24X30

2. Attach the 24" x 30" mud flap (9) onto the inside of the right bracket (7) with 5 of 3/8" x 1-1/4" hex bolts , flat washers against the rubber and flange locknuts (4).

- Mount the flap with the smooth side forward.



Attached Right Mud Flap

222314

3. On the left side, install the mud flap support bracket that has 4 flap mount holes (8) to the left side of the platform.

- Install with the flap mount holes to the bottom.
- Fasten the support bracket (8) with a 1/2" x 2-5/8" x 3-3/4" square u-bolt (2) and flange locknuts (5).
  - Leave the u-bolt loose for adjustment later.

## ***Installation of the Mud Shields on Towed TMR Mixers***

---

4. Attach the 24" x 24" mud flap (6) onto the inside of the left bracket with 4 of 3/8" x 1-1/4" hex bolts (3), flat washers against the rubber and flange locknuts (4).

- Mount the flap with the smooth side forward.



Attached Left Mud Flap

222315

5. Adjust the height of the right and left mud flaps so the bottom of each flap is at the same level as the bottom of the conveyor.
  - Tighten the u-bolts on the mounting brackets to fasten in position.