

A second electric selector valve will be installed on the machine.

The new electric selector valve is used to switch the hydraulic flow between the bale lift/dump cylinders and the feed rollers.



Shut down the tractor and remove the key before repairing, servicing, lubricating or cleaning the machine.

Relieve all hydraulic pressure in the hoses. Disconnect the hydraulic hoses from the tractor before going near the machine.

Securely block the machine to avoid any movement while doing the work.



Do Not Enter Tub While Parts Are Rotating

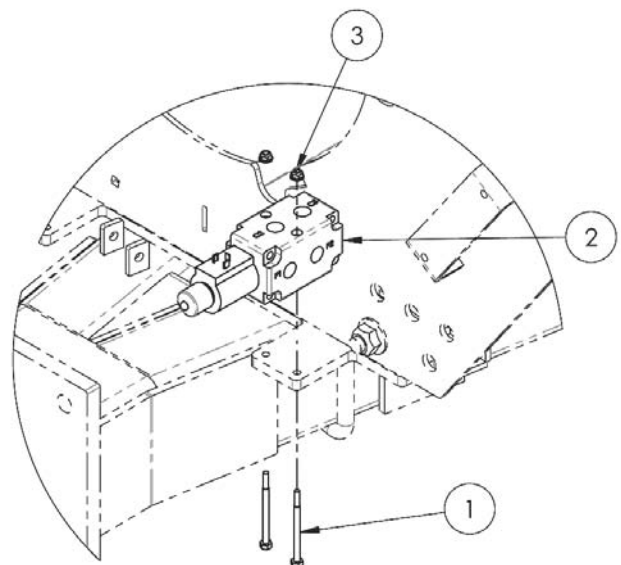
Before entering the tub:

- Turn off the tractor and remove the key.
- Wait for rotating parts to stop

Contact with the rotating flail drum will cause serious injury or death.

1. Install the selector valve (2) onto the top of the bracket that is at the bottom left of the front tub wall.

- Mount the valve with the electrical connections facing upward and toward the front of the hitch.
- Use 2 of 1/4" X 3 1/2" carriage bolts (1), and flange locknuts (3) to mount the valve.

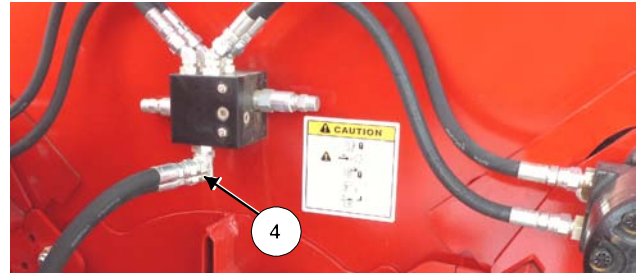


Install the Selector Valve

46602_A1

Installation of the Electric Selector Valve On The BP 965 - 3 Remote to 2 Remote

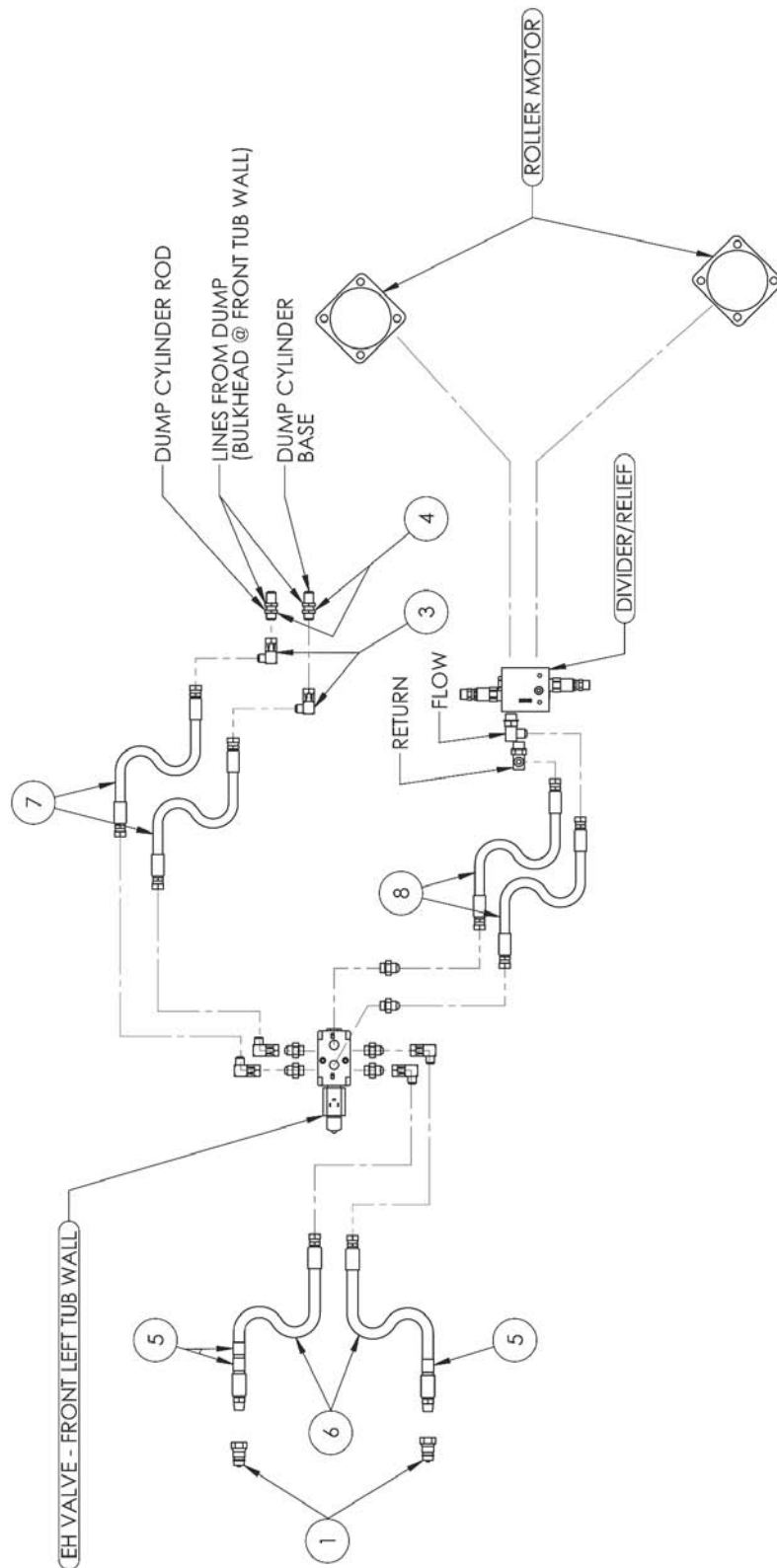
2. Remove both hoses (4) that come out of the bottom of the hydraulic divider/relief valve located in the middle of the front tub wall.
 - Discard these hoses.



Remove Hydraulic Hoses from Divider/Relief Valve
221528C

3. Connect the new hydraulic fittings and hoses according to the table and drawings shown below.

ITEM	DESCRIPTION
1	HYD,FIT,PIONEER,MALE,8FP
2	HYD,FIT,ADAPTER,8MB-8MJ
3	HYD,FIT,ELBOW,8FJX-8MJ90
4	HYD,FIT,BULKHEAD UNION,8MJ-8MJ
6	HYD,HOSE,1/2X130,8MP-8FJX,2W
7	HYD,HOSE,3/8X14,8FJX-8FJX,2W
8	HYD,HOSE,1/2X35,8FJX-8FJX,2W



Connect Fittings and Hoses

46604_A

4. Route the hoses that go to the tractor through the non-abrasion cover and through the hose holder.
5. Use zipties as required to keep the hose routing tidy and away from areas that may damage the hoses.
6. Route the electrical harness from the selector valve through non-abrasion cover, the hose holder and to the tractor cab.
7. Connect the electrical harness to the selector valve connector.
8. Connect the electrical harness to the selector switch in the tractor cab.
9. Connect the harness to the positive and negative terminals of a 12 volt power supply.



Route Hoses through Non-Abrasion Cover
and through Hose Holder

221276