

## Installation of the Electric Hydraulic Valve On The BP 660

The electric hydraulic valve is used to switch the hydraulic flow between the bale lift/dump cylinders and the discharge door cylinder.



Shut down the tractor and remove the key before repairing, servicing, lubricating or cleaning the machine.

Relieve all hydraulic pressure in the hoses. Disconnect the hydraulic hoses from the tractor before going near the machine.

Securely block the machine to avoid any movement while doing the work.



**Do Not Enter Tub While Parts Are Rotating**

Before entering the tub:

- Turn off the tractor and remove the key.
- Wait for rotating parts to stop

Contact with the rotating flail drum will cause serious injury or death.



Remove the Front Hose Clamp

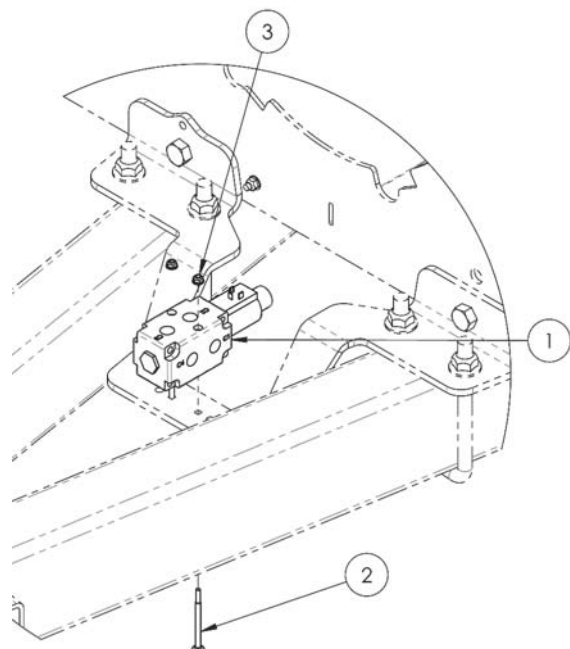
215092C

1. Remove the fasteners (1) from the hose clamp which is on the bottom of the bracket between the hitch tubes.

- Keep the clamp and fasteners to be re-used later.
- Move the hoses to the side to make room for installing the selector valve.

2. Install the selector valve (1) onto the top of the bracket.

- Mount the valve with the electrical connections facing upward and toward the tub wall.
- Use 2 of 1/4" X 3 1/2" carriage bolts (2), and flange locknuts (3) to mount the valve.

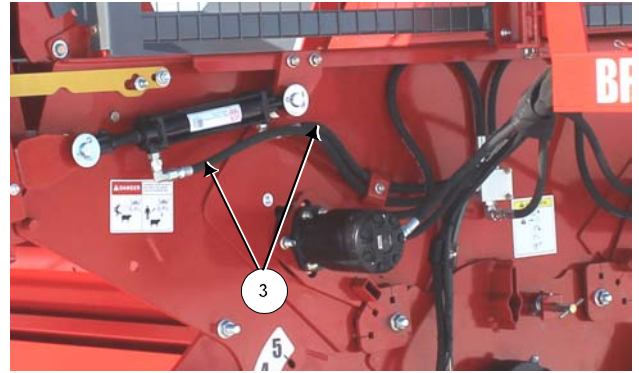


Install the Selector Valve

46600\_A1

## Installation of the Electric Hydraulic Valve On The BP 660

3. Remove both hydraulic hoses (3) that are connected to the discharge door cylinder.
  - Leave the orifice and elbow in the rod end of the cylinder.
  - Leave the elbow in the base end of the cylinder.
  - Discard the hoses.

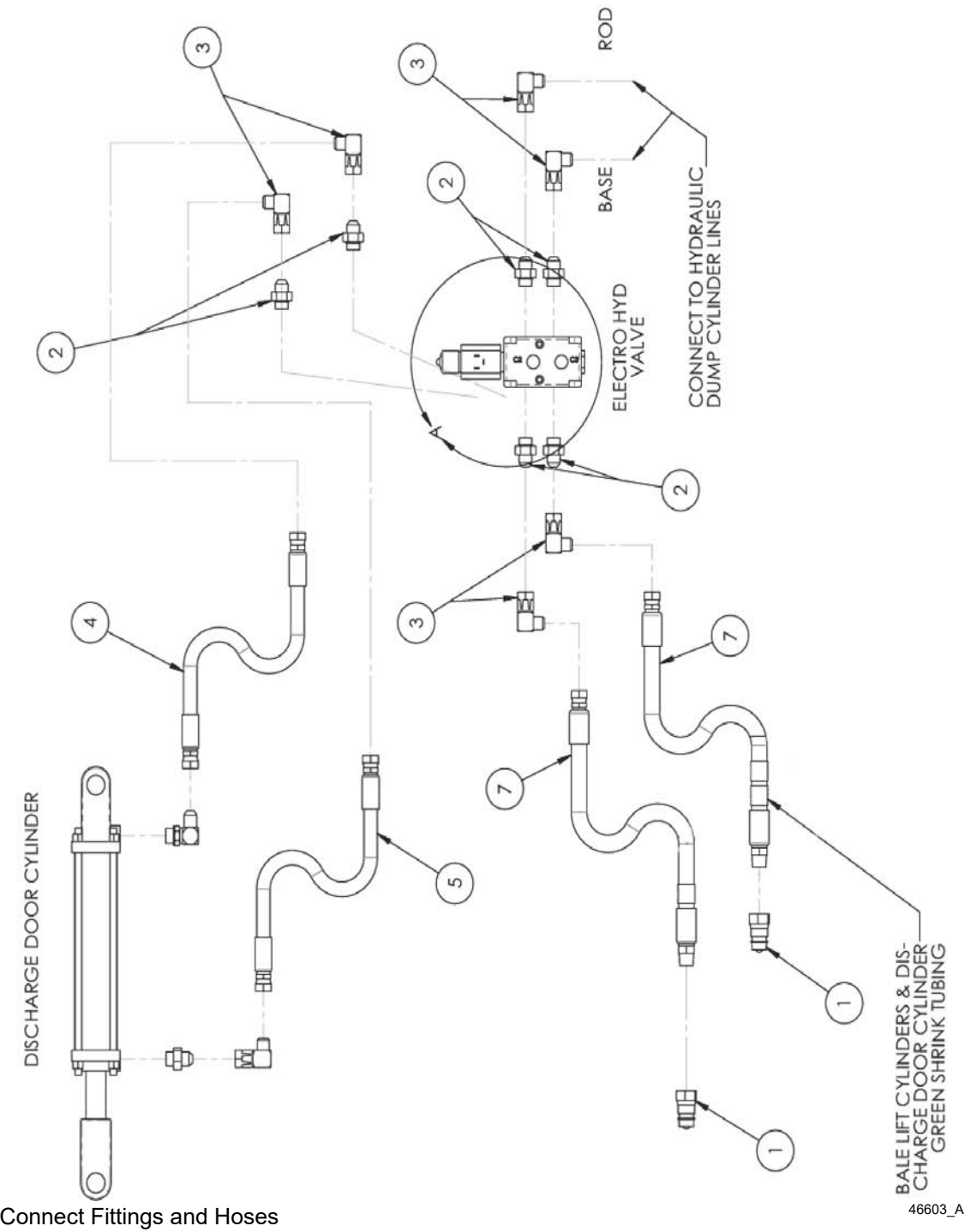


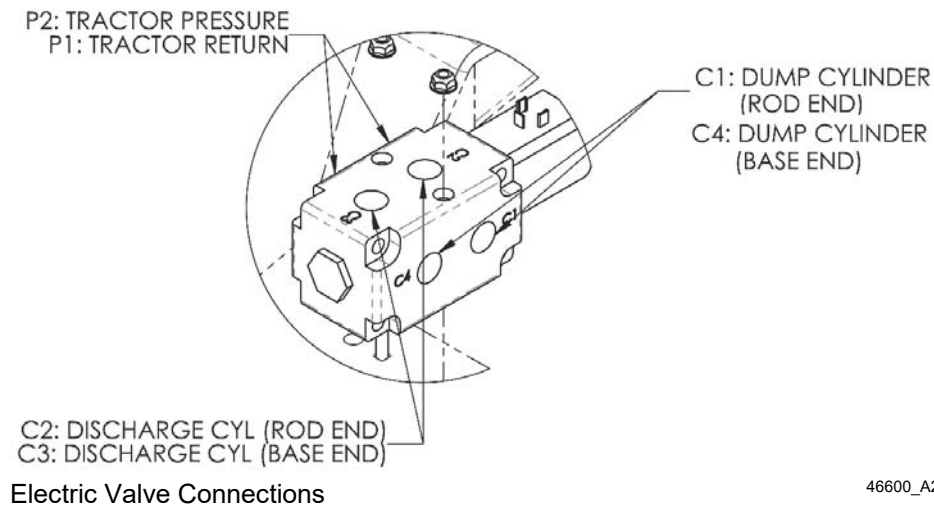
Remove Discharge Door Hydraulic Hoses

221431C2

4. Connect the new hydraulic fittings and hoses according to the table and drawings shown below.

ITEM	DESCRIPTION
1	HYD,FIT,PIONEER,MALE,8FP
2	HYD,FIT,ADAPTER,8MB-8MJ
3	HYD,FIT,ELBOW,8FJX-8MJ90
4	HYD,HOSE,3/8X62,8FJX-8FJX,2W
5	HYD,HOSE,3/8X72,8FJX-8FJX,2W
7	HYD,HOSE,1/2X130,8MP-8FJX,2W





5. Route the hoses that go to the tractor through the non-abrasion cover and through the hose holder.
6. Use zipties as required to keep the hose routing tidy and away from areas that may damage the hoses.
7. Replace the hose clamp onto the hoses at the bottom of the bracket between the hitch tubes.
  - Connect the clamp with the fasteners removed in Step 1.
8. Route the electrical harness from the selector valve through the hose holder and to the tractor cab.
9. Connect the electrical harness to the selector valve connector.
10. Connect the electrical harness to the selector switch in the tractor cab.
11. Connect the harness to the positive and negative terminals of a 12 volt power supply.



Route Hoses through Non-Abrasion Cover and through Hose Holder

221276