



Park the BP 965 on level ground.

Lower the forks to the ground for additional stability.

Disconnect the drive shaft from the tractor before beginning any work.

Disconnect the BP 965 from the tractor hitch.



Shut down the tractor and remove the key before repairing, servicing, lubricating or cleaning the machine.

Relieve all hydraulic pressure in the hoses. Disconnect the hydraulic hoses from the tractor before going near the machine.

Securely block the machine to avoid any movement while doing the work.



Do Not Enter Tub While Parts Are Rotating

Before entering the tub:

- Turn off the tractor and remove the key.
- Wait for rotating parts to stop

Contact with the rotating flail drum will cause serious injury or death.



1. Set the guard rod adjustment handle to the number 3 position.



Set Aggression to Level 3

221435

Assembly of the Hydraulic Aggression Control on the BP 965

2. Lock the flail drum at the lock on the front tub wall.



Lock the Flail Drum

221364

3. Inside the tub, place some wooden blocks between the flail drum and the guard rods to prevent the rods from falling when the adjustment handle is removed.



Block Up the Guard Rods

215058

4. In the flail discharge area, remove the fasteners (1) that hold the guard adjustment handle to the adjustment rod.
 - Keep the bolt to be re-used. The nut can be discarded.



Remove Fasteners from Adjustment Handle

215059C

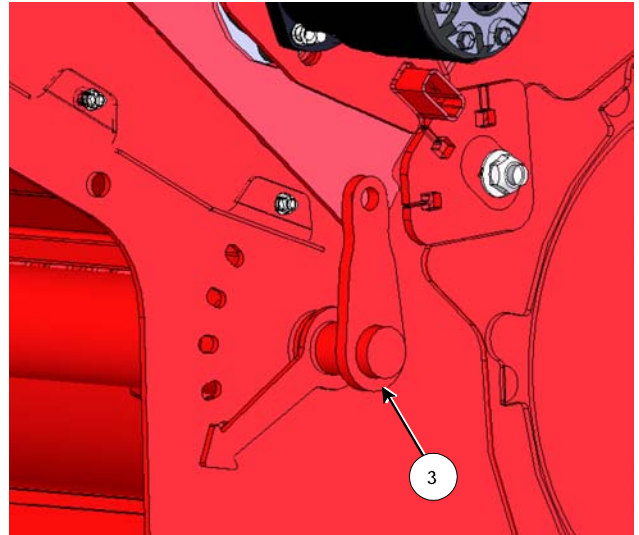
5. At the front tub wall, remove the adjustment handle and lock (2) by pulling them forward.
 - This handle and lock can be discarded.



Remove the Adjustment Handle

215060C

6. Place the new adjustment link (3) into the adjustment rod.



Install Adjustment Link Into the Rod

221433-1C

7. Fasten the adjustment link into the adjustment rod with the fasteners removed in step 3.

- Align the holes and insert the bolt (1).
- Fasten with the new locknut.

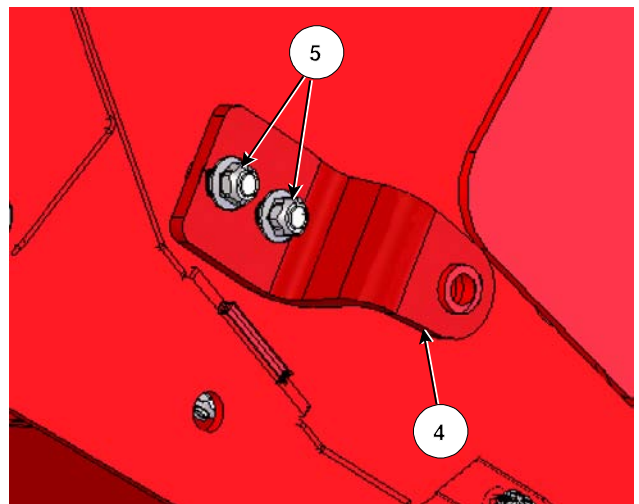


Fasteners Adjustment Link

215059C

8. Attach the upper cylinder bracket (4) onto the front tub wall.

- Fasten with 2 of $\frac{1}{2}$ " x 1-1/4" carriage bolts with bolt retainers against the front of the tub wall.
- Place the bracket onto the bolts and fasten with $\frac{1}{2}$ " flange locknuts (5).

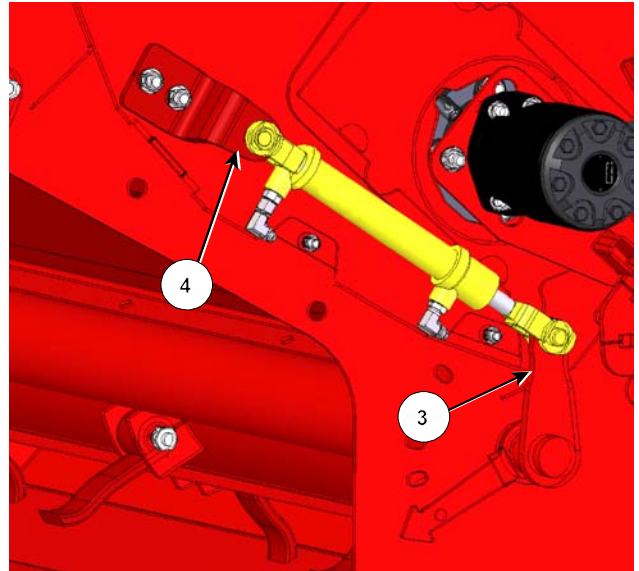


Attach the Upper Cylinder Bracket

221433-2C

Assembly of the Hydraulic Aggression Control on the BP 965

9. Attach the base of the cylinder to the upper bracket (4).
 - Position the cylinder with the ports facing downward.
 - Fasten in place with the cylinder pin.
10. Attach the rod end to the adjustment link (3).
 - Fasten in place with the cylinder pin.



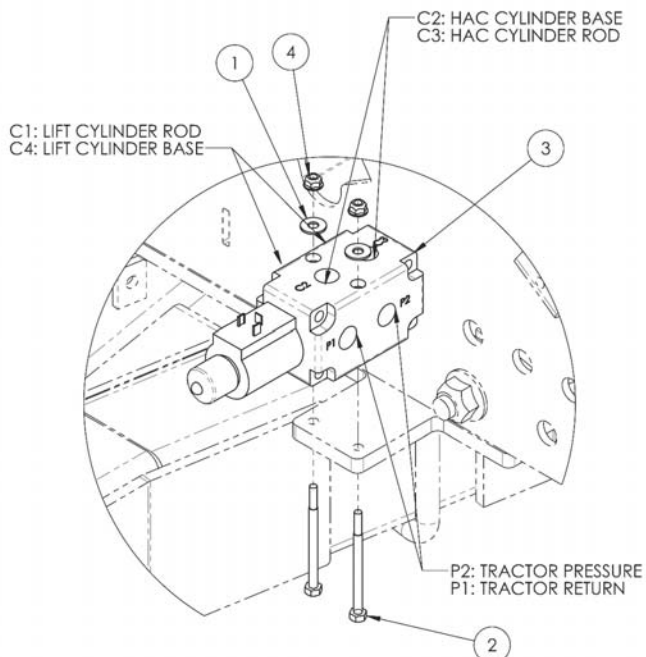
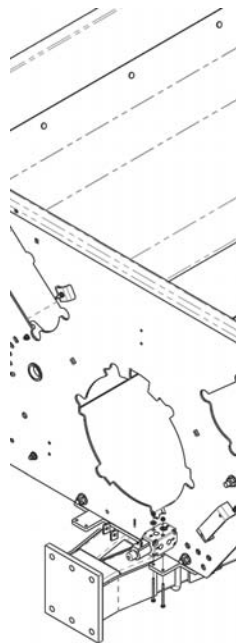
Attach the Cylinder to the Bracket and Link

221434C

Hydraulic Connections for 3 Remote

1. Install the electric selector valve onto the mount tab located at the bottom right side of the front tub wall.
 - Install according to the chart and diagram below.

ITEM	DESCRIPTION
1	WASHER,FLAT,1/4,ZP
2	BOLT,HEX,1/4X3-1/2,UNC,GR5,ZP
3	HYD,VALVE,ELEC_DOUBLE SELECTOR
4	NUT,FLG,LOCK,1/4,UNC,GR5,ZP



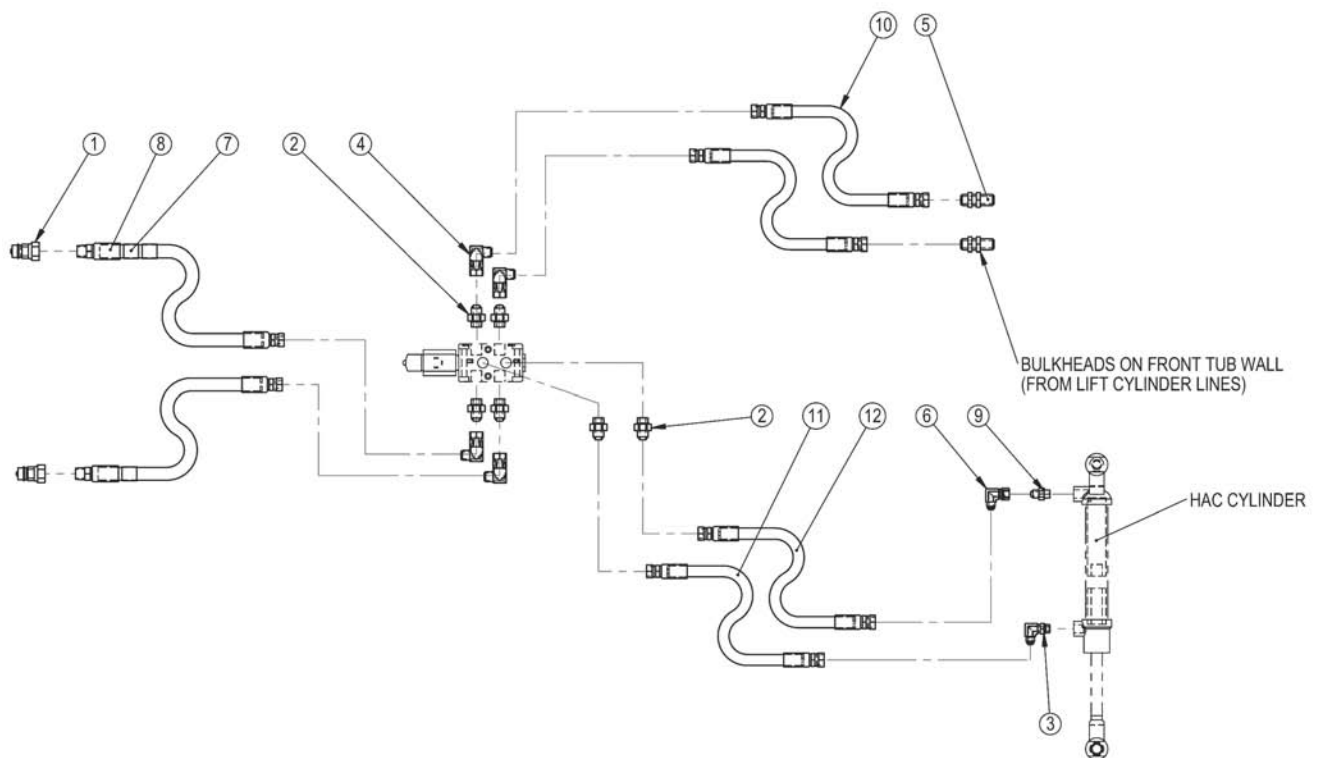
Install the Selector Valve to Mount on Front Tub Wall

46471_A

Assembly of the Hydraulic Aggression Control on the BP 965

2. Connect the hydraulic fittings and hoses according to the chart and diagram below.

ITEM	DESCRIPTION
1	HYD,FIT,PIONEER,MALE,8FP
2	HYD,FIT,ADAPTER,8MB-8MJ
3	HYD,FIT,ELBOW,6MB-6MJ90
4	HYD,FIT,ELBOW,8FJX-8MJ90
5	HYD,FIT,BULKHEAD UNION,8MJ-8MJ
6	HYD,FIT,ELBOW,6MJ-6FJX90
8	HYD,HOSE,1/2X130,8MP-8FJX,2W
9	HYD,FIT,ORF,1/32,6MB-6MJ
10	HYD,HOSE,3/8X14,8FJX-8FJX,2W
11	HYD,HOSE,3/8X42,6FJX-8FJX,2W
12	HYD,HOSE,3/8X53,6FJX-8FJX,2W



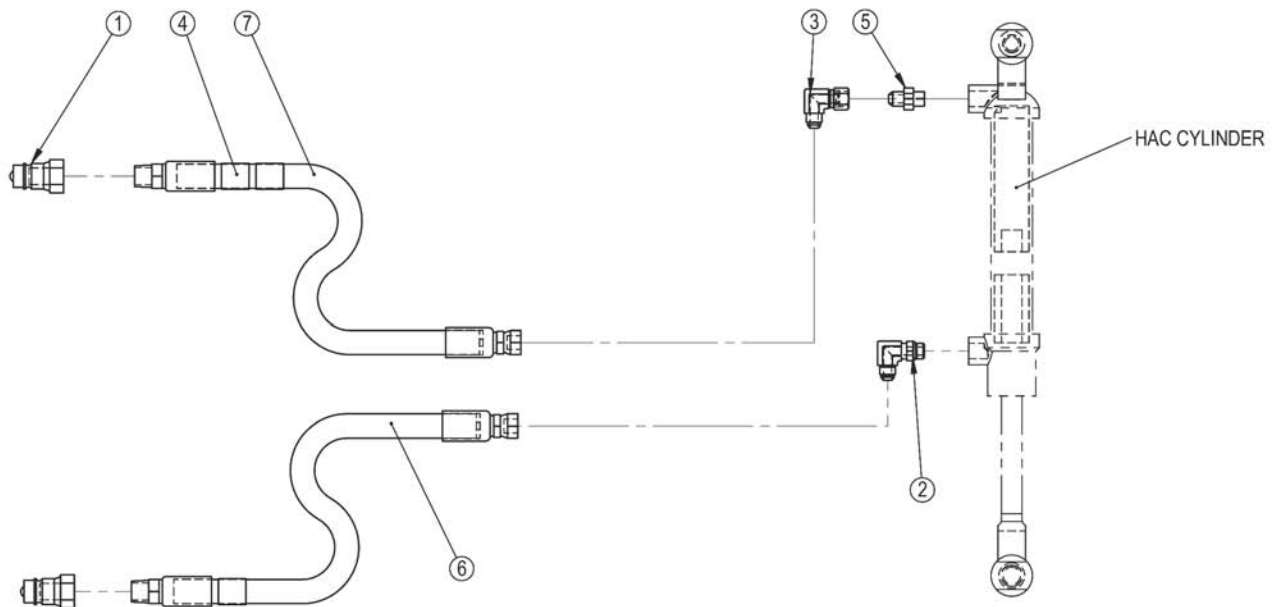
Hydraulic Fittings and Hoses for 3 Remote Aggression Control

46469_A

Hydraulic Connections for 4 Remote

1. Connect the hydraulic fittings and hoses according to the chart and diagram below.

ITEM	DESCRIPTION
1	HYD,FIT,PIONEER,MALE,8FP
2	HYD,FIT,ELBOW,6MB-6MJ90
3	HYD,FIT,ELBOW,6MJ-6FJX90
5	HYD,FIT,ORF,1/32,6MB-6MJ
6	HYD,HOSE,3/8X120,8MP-6FJX,2W
7	HYD,HOSE,3/8X130,8MP-6FJX,2W



Hydraulic Fittings and Hoses for 4 Remote Aggression Control

46470_A

For 3 Remote and 4 Remote

1. Route the hoses through the non-abrasion cover.
2. Place the hoses into the hose holder.



Route Hoses in Abrasion Cover and Holder

221308

3. Remove the wooden blocks from between the flail drum and the guard rods.



Remove the Wood Blocks

215066

