

Unloading and Assembly of the Bale Mover 1400

The following procedures involve lifting heavy objects. Multiple machines are needed to coordinate the work. Ensure the lifting machines are capable of lifting the loads.



Keep people a safe distance from loads that are being lifted and lowered.

Unloading the Top Bale Mover

1. Cut all the bands that hold together the top and bottom BM1400.
 - Cut the bands on the left and right side of the machines and from the hitch.



216103

2. Drive a forklift to the left side of the BM1400.
 - Place the forks between the four tires on the left side.



216104

Unloading and Assembly of the Bale Mover 1400

3. Drive a forklift to the right side of the BM1400.
 - Place both forks in front of the four tires (toward the hitch) on the right side.
4. Use both forklifts to lift the top bale mover off the lower bale mover.
 - Lift the top bale mover high enough to allow the lower bale mover to be towed away.
5. Tow the lower bale mover away to allow the upper bale mover to be lowered.
6. Slowly lower the upper bale mover to the ground.
 - Back the forklifts away.



216105

7. From the bale mover that has been towed away:
 - Place the forks of the forklift on either side of the outer wheels on the right side.
 - Lift the machine and remove the 2 axle wedges between axle and oscillator tandem.
 - Place the forks of the forklift on either side of the outer wheels on the left side.
 - Lift the machine and remove the 2 axle wedges between axle and oscillator tandem.



216106

8. Remove the wood blocks from the bed of the bale mover.

Installing the Bale Lift Arms

1. Cut the bands holding the bale lift arms.
2. Lift the arms off the bed of the machine.
3. Remove the upper pin (and fasteners) and the lower bolt from the lift arm.

- Keep these items as they will be used in the assembling of the arm to the machine.



Remove Upper Pin and Lower Bolt

216110

4. Remove the pin (and fasteners) and washers from the arm pivot on the frame of the bale mover.

- Keep these items as they will be used in the assembling of the arm to the machine.



Remove Pin and Washers from Arm Pivot

216111

5. Untie the lift arm cylinder from the arm pivot that has the rubber bumper mounted on it.

- Lower the cylinder. It will be attached later.

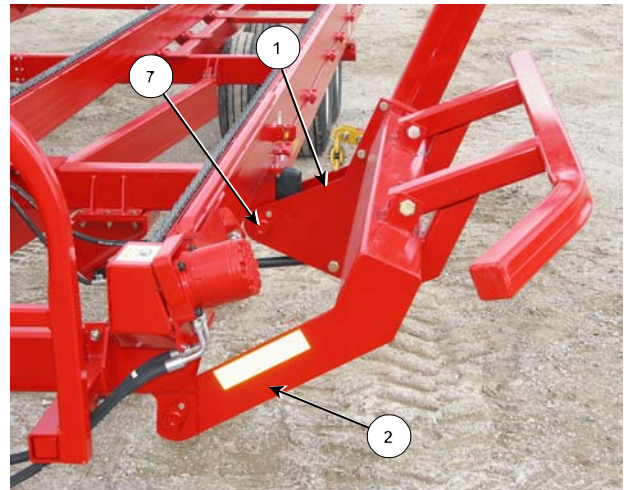


Untie and Lower the Lift Arm Cylinder

216112

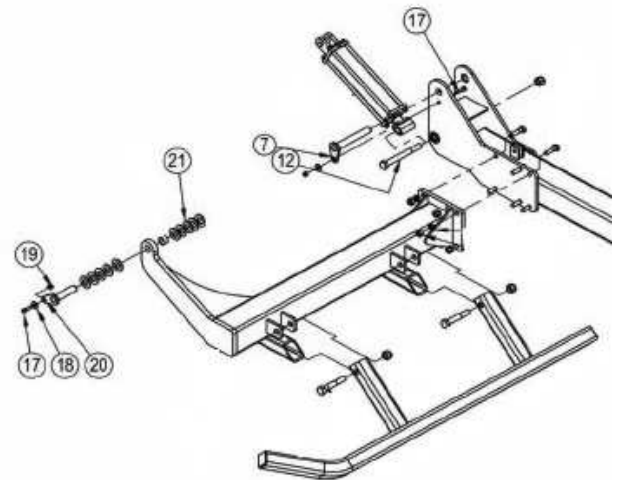
6. Position the left bale lift arm in place.

- Slide the rear mount plates (1) around the mount holding the rubber bumper.
- Slide the fork end plate (2) into the mount plates.
- Insert a 1-1/4" x 8-3/4" chrome tabbed pin (7) into the top hole of the rear mount plate.
 - Fasten the pin with 1/2" x 1-3/4" bolt, washer and locknut.
- Push the arm toward the back of the machine so the inner surface of the arm side plate is against the pivot bushing.
- Add 1 1/4" washers (21) so there is a minimum of 1/8" clearance on each side of the fork end plate. (Typically 6 washers on each side.)
- Insert a 1-1/4" x 5-1/4" chrome tabbed pin (20) into the mount plates, through the washers and the fork end plate.
 - Fasten the pin with 1/2" x 1-3/4" bolt, washer and locknut (17,18,19).



Position and Fasten the Lift Arms

216108C1



216109

7. Attach the cylinder to the arm with a 1" x 9" Grade 8 bolt (12) and locknut.

8. Repeat the process for the right lift arm.