

Installation of the CFR650 12 Guard Rod Kit

From Serial Numbers CFR6502765 and Onward



Shut down the tractor and remove the key before repairing, servicing, lubricating or cleaning the machine.

Relieve all hydraulic pressure in the hoses. Disconnect the hydraulic hoses from the tractor before going near the machine.

Securely block the machine to avoid any movement while doing the work.



Do Not Enter Tub While Parts Are Rotating

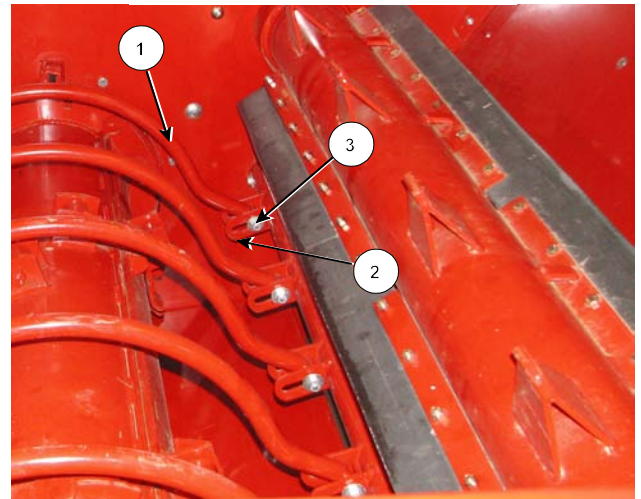
Before entering the tub:

- Turn off the tractor and remove the key.
- Wait for rotating parts to stop

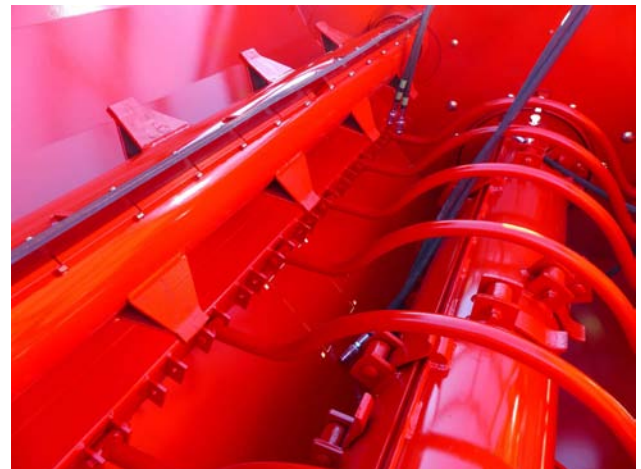
Contact with the rotating flail drum will cause serious injury or death.

Removing Parts

1. Disconnect the existing guard rods (1) from the adjustment tube tabs (2) by removing the bolts, flatwashers and locknuts (3).
- Discard this hardware. New hardware is included in the kit.
 - Leave the other end of the guard rods connected to the tub wall.
 - Allow the guard rods to rest on the flail drum.



Disconnect Guard Rods from Adjustment Tube 218166C

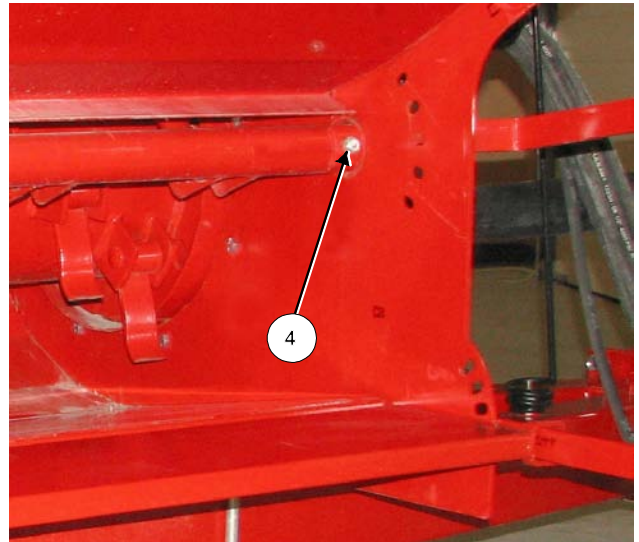


Leave Other End of Guard Rod Connected 218168

Installation of the CFR650 12 Guard Rod Kit
From Serial Numbers CFR6502765 and Onward

2. Near the inside of the front tub wall, remove the nut, flatwasher, slotted spacer and bolt (4) on the guard rod adjustment tube.

- Keep the hardware and spacer to be used again.



Remove Adjustment Handle Hardware

218167C

3. At the outside of the front tub wall, slide the adjustment handle (5) out of the adjustment tube.

- Support the adjustment tube on the inside of the tube wall while removing the handle.
- Keep the handle to be reinstalled later.



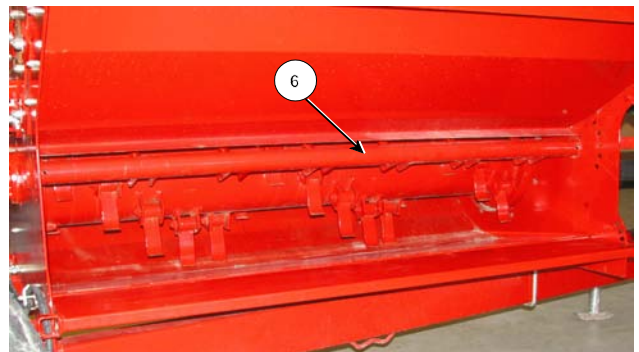
Remove Adjustment Handle, Support Tube

218169C

4. Remove the adjustment tube (6) from the flail drum area.

Note: If a Feed Chopper is installed it may be necessary to move the chopper to remove the tube.

- Discard the adjustment tube.



Remove the Adjustment Tube

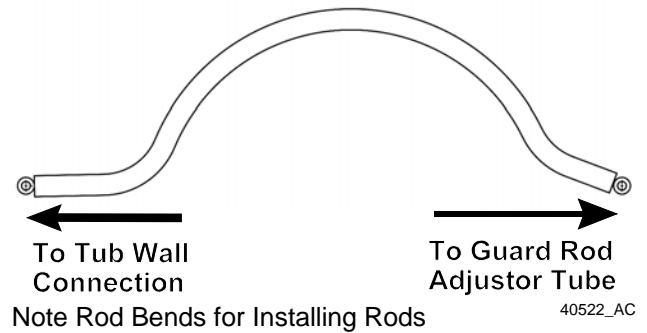
218170C

Installation of the CFR650 12 Guard Rod Kit
From Serial Numbers CFR6502765 and Onward

Installing Parts

1. Install the additional 6 guard rods onto the mount tabs located on the left tub wall.

- Note the bends on the tube.
 - Use the diagram to determine the bend and the rod end connection.
 - The bend on the rod determines which way to install the rod.
- Lay the rods on the flail drum in the orientation shown in the diagram.
- Connect the rods to the left tub wall mount tabs using $\frac{1}{2}$ " x 3-1/4" bolts and locknuts.
 - Ensure the bolts are loose enough to allow the guard rods to be moved into all positions.



Connect the Rods to the Left Tub Wall Tabs

218172

2. Install the 12 rod adjustment tube into the flail area.

- The tab (1) on the adjustment tube goes toward the front of the machine.

Note: If a Feed Chopper is installed it may be necessary to move the chopper to install the tube.

- Insert the tube into the rear tub wall.

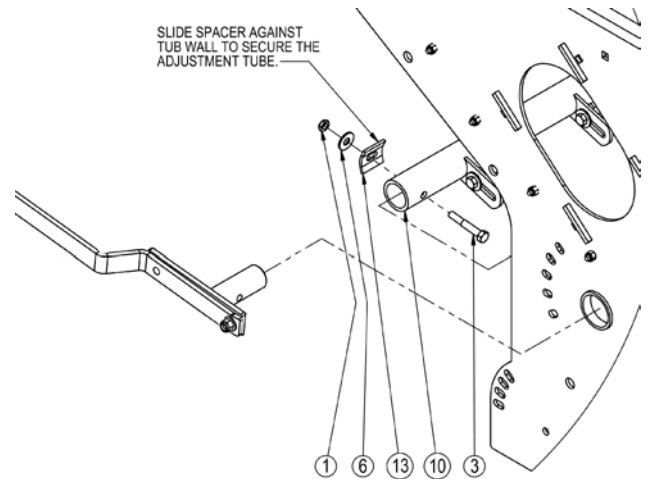


Install the 12 Guard Rod Adjustment Tube

218171C

Installation of the CFR650 12 Guard Rod Kit
From Serial Numbers CFR6502765 and Onward

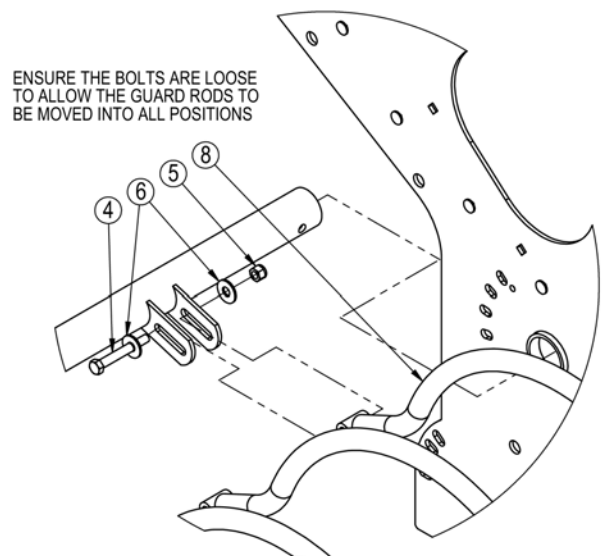
3. Insert the adjustment handle through the front tub wall and into the adjustment tube.
4. Fasten the adjustment handle into the tube with the nut (1), flatwasher (6), slotted spacer (13) and bolt (3) that were removed earlier.
 - Slide the spacer (13) against the front tub wall to secure the adjustment tube.



Insert and Fasten Adjustment Handle

40508_C

5. Move the aggression level handle to position 1.
6. Lift the guard rods (8) up into the tabs of the adjustment tube.
 - Fasten into the tabs with a $\frac{1}{2}$ " x 3-3/4" bolt (4) flatwasher on the outside of both tabs (6) and a locknut (8).
 - Ensure the bolts are loose enough to allow the guard rods to be moved into all aggression positions.



Attach Guard Rods to the Adjustment Tube

40508_C2

7. Move the aggression adjustment handle to all the positions to ensure free movement of the handle and guard rods.