

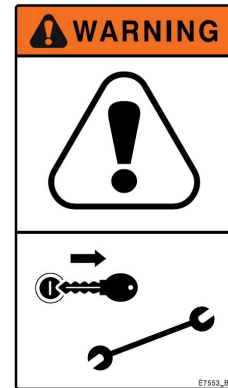
Installation of the Flow Control Valve on the CFR651 2 Remote



Shut down the tractor and remove the key before repairing, servicing, lubricating or cleaning the machine.

Relieve all hydraulic pressure in the hoses. Disconnect the hydraulic hoses from the tractor before going near the machine.

Securely block the machine to avoid any movement while doing the work.



Do Not Enter Tub While Parts Are Rotating

Before entering the tub:

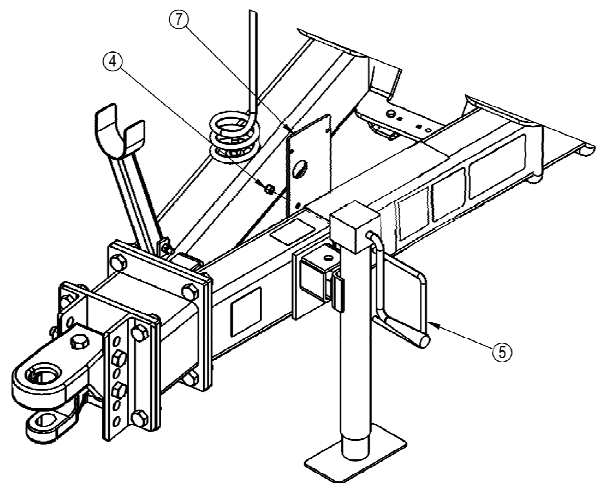
- Turn off the tractor and remove the key.
- Wait for rotating parts to stop

Contact with the rotating flail drum will cause serious injury or death.



This installation information is to be used after the Electric Hydraulic solenoid valve has been installed on the machine.

1. Attach the mount plate (7) to the left hitch tube using the 3/8" u-bolt (5) and locknut (4).
- Mount the plate towards the rear of the jack mount tube on the hitch.



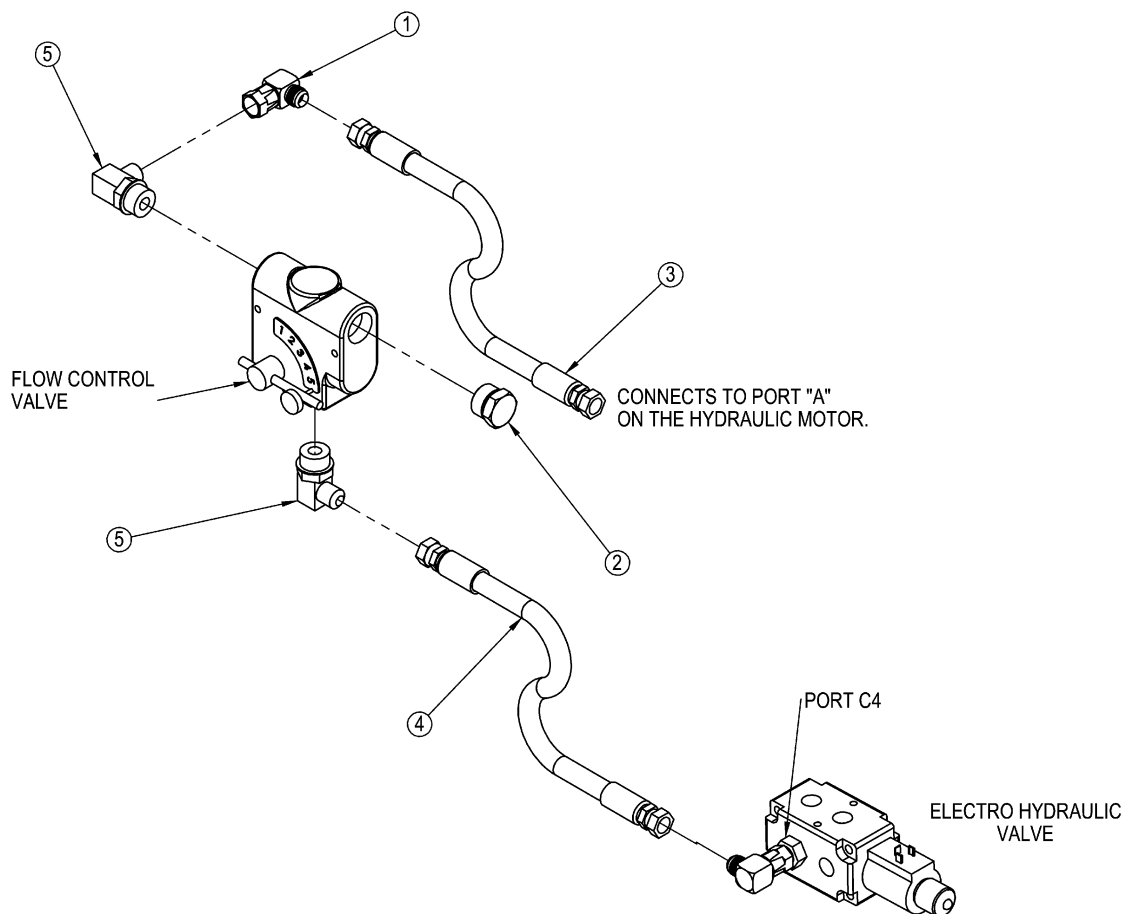
Attach the Valve Mount Plate

41824_A1

Installation of the Flow Control Valve on the CFR651 2 Remote

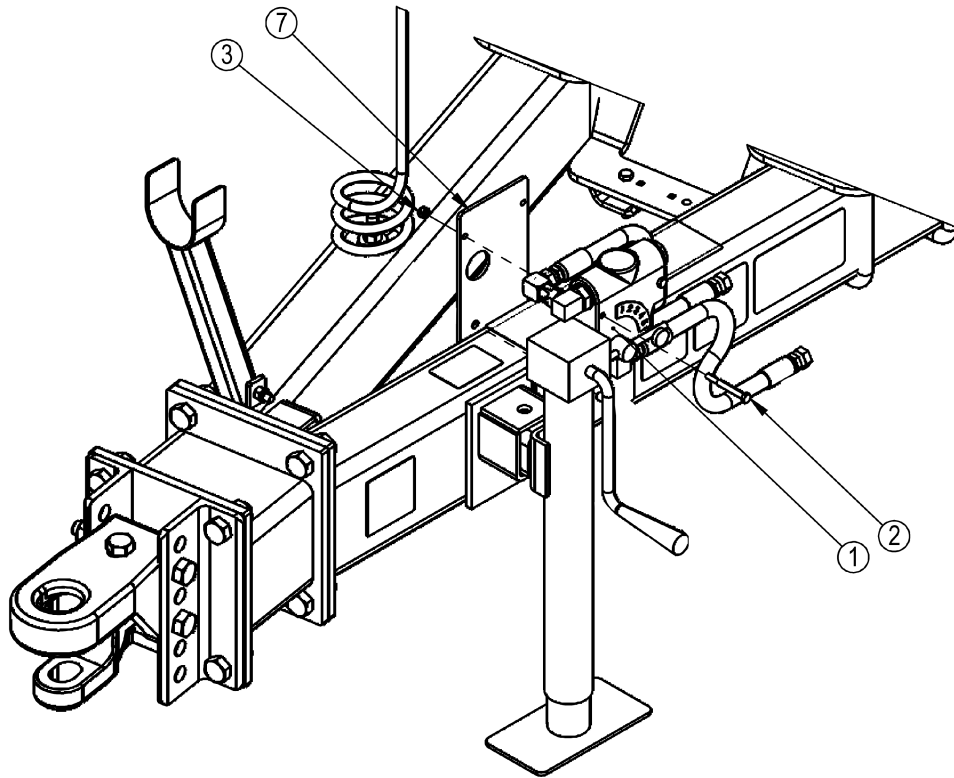
2. Attach the hydraulic fittings and hoses to the flow control valve as shown in the table and diagram below.
 - The flow control valve will be attached to the mount plate after the hoses are attached.

N0.	DESCRIPTION	QTY.
1	HYD,FIT,ELBOW,8FJX-8MJ90	1
2	HYD,FIT,PLUG,12MB	1
3	HYD,HOSE,3/8X60,8FJX-8FJX,2W	1
4	HYD,HOSE,3/8X16,8FJX-8FJX,2W	1
5	HYD,FIT,ELBOW,12MB-8MJ90	2



42816_A

3. Attach the flow control valve (1) (with hoses attached) to the mount plate (7).
 - Use 2 of 1/4" x 2 1/2" bolts (2) and locknuts (3).



Attach Valve to Mount Plate

41816_A2