



Shut down the tractor and remove the key before repairing, servicing, lubricating or cleaning the machine.

Relieve all hydraulic pressure in the hoses. Disconnect the hydraulic hoses from the tractor before going near the machine.

Securely block the machine to avoid any movement while doing the work.



1. Set the guard rod adjustment handle to the number 3 position.
2. Inside the tub, place some wooden blocks between the flail drum and the guard rods to prevent the rods from falling when the adjustment handle is removed.



Do Not Enter Tub While Parts Are Rotating

Before entering the tub:

- Turn off the tractor and remove the key.
- Wait for rotating parts to stop

Contact with the rotating flail drum will cause serious injury or death.



Block Up the Guard Rods

215058

Assembly of the Hydraulic Aggression Control on the CFR650

3. In the flail discharge area, remove the fasteners (1) that hold the guard adjustment handle to the adjustment rod.

- Keep these fasteners as they will be used later.



Remove Fasteners from Adjustment Handle

215059C

4. At the front tub wall, remove the adjustment handle and lock (2) by pulling them forward.

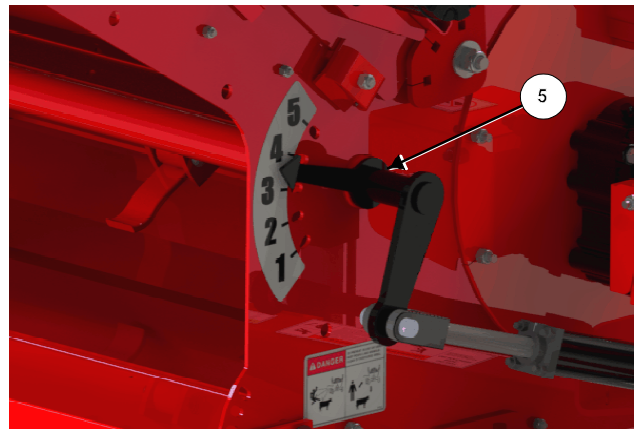
- This handle and lock can be discarded.



Remove the Adjustment Handle

215060C

5. Place the adjustment link (5) into the adjustment rod.



Place Adjustment Link into Adjustment Rod

215063C

Assembly of the Hydraulic Aggression Control on the CFR650

6. Fasten the adjustment link into the rod with the fasteners removed in step 3.

- Align the holes and insert the bolt (1). Fasten with the locknut.

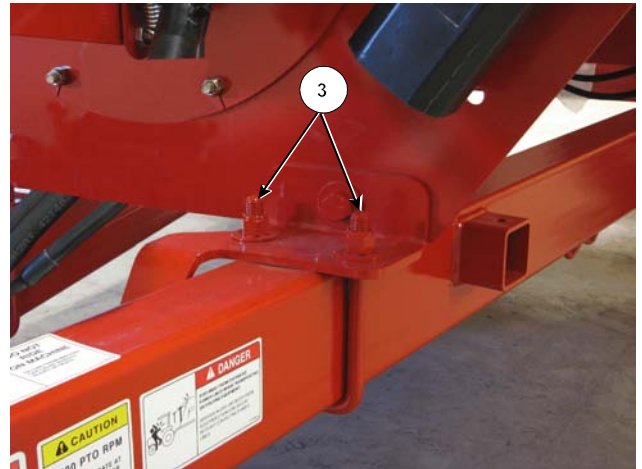


Fasteners Adjustment Link

215059C

7. Remove the nuts and washers from the left u-bolt (3) that holds the bracket onto the frame.

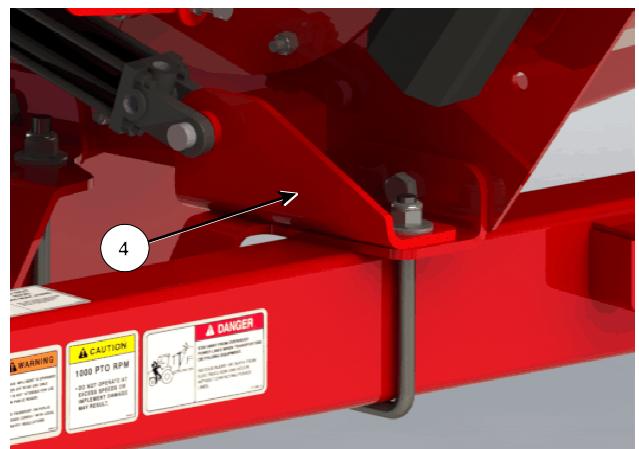
- Keep these fasteners to be used again.



Remove Fasteners from U-Bolt

215061C

8. Install the cylinder mount bracket (4) onto the u-bolt and fasten in place with the washers and nuts.

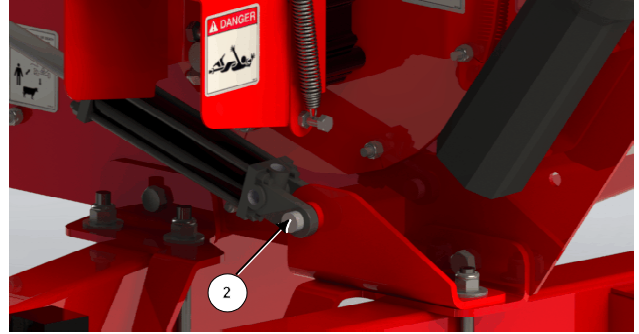


Install Cylinder Bracket

215062C

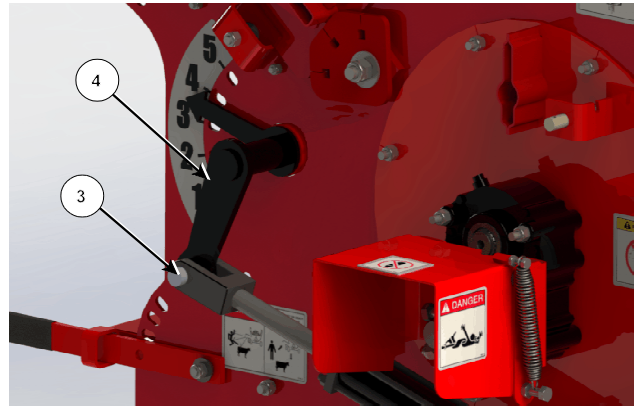
Assembly of the Hydraulic Aggression Control on the CFR650

9. Place the base of the cylinder (2) onto the mount bracket.
 - Position the cylinder with the hydraulic ports pointing up.
 - Connect the cylinder onto the bracket with the pin supplied with the cylinder.
10. Place the rod end (3) of the cylinder onto the adjustment link (4).
 - Connect with the pin supplied with the cylinder.
11. Place the supplied 90 degree elbow (3) into the base end of the cylinder.
 - Position the elbow to point toward the adjustment link.
12. Place the supplied orifice adaptor (2) into the rod end of the cylinder.
13. Attach the 105 inch hydraulic hose (5) to the elbow on the base end of the cylinder.
14. Attach the 100 inch hydraulic hose (4) to the orifice adaptor on the rod end of the cylinder.
15. Route the hoses through the non-abrasion cover and on to the end of the hitch.
16. Remove the wooden blocks from between the flail drum and the guard rods.



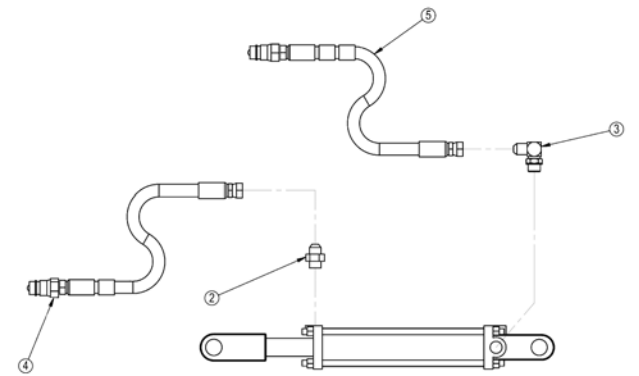
Mount Cylinder to Bracket

215064C



Place Cylinder Rod Onto Adjustment Link

215065C



Install Fittings and Hoses

45570_B



Remove Wood Blocks

215066